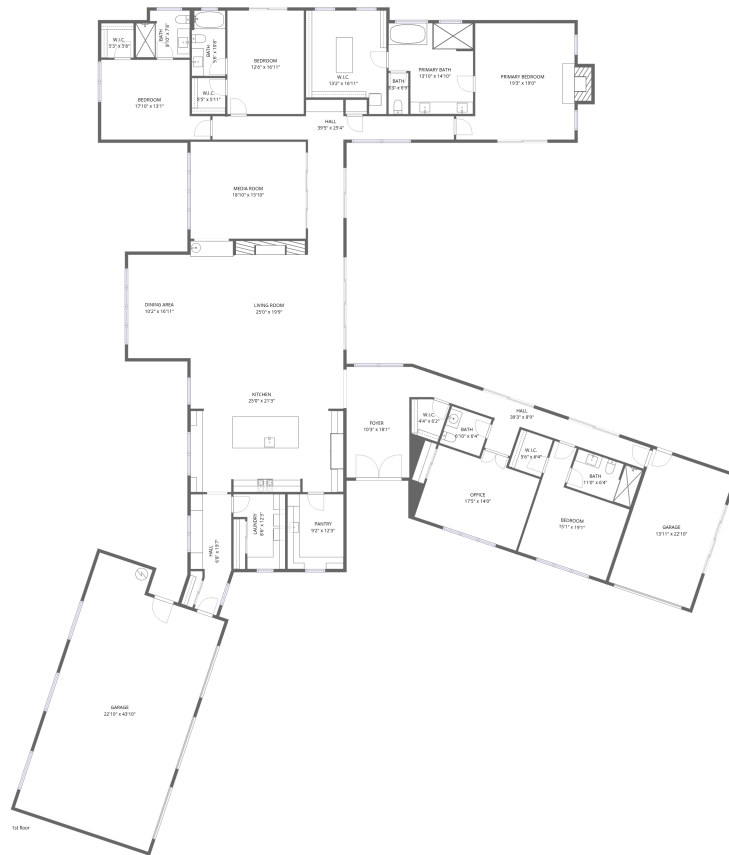


Home data report

11 Glenhaven Dr, Reno, Washoe County, Nevada, United States, 89511



Total Area: 4576 sq. ft

1st Floor: 4576 sq. ft

Excluded: Garage 1268 sq. ft, Fireplace 18 sq. ft, Walls: 326 sq. ft

Property summary

 **1** Floors

 **4** Bedrooms

 **4** Bathrooms

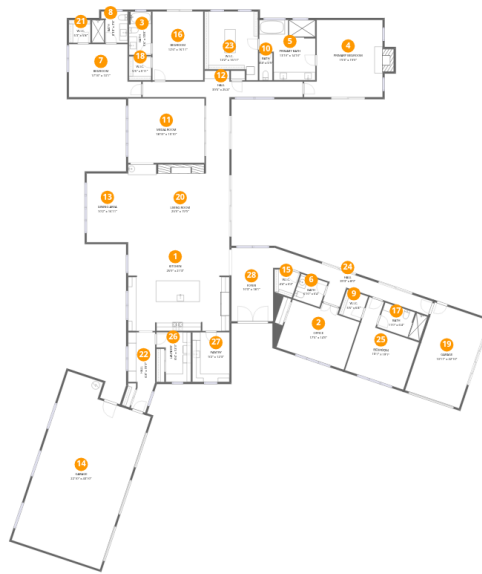
Home data report

**11 Glenhaven Dr, Reno, Washoe County, Nevada, United States,
89511**

 **1**
Half baths

 **2**
Garages

11 Glenhaven Dr, Reno, Washoe County, Nevada, United States, 89511



Room dimensions

Floor 1

Total:4576sqft

Excluded: 1286sqft

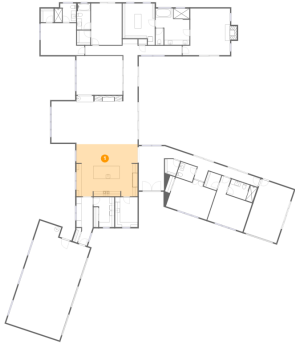
#		Dimensions	sqft	Counted as living area
1	Kitchen	25'0" x 21'3"	530 sq. ft	Yes
2	Office	17'5" x 14'0"	243 sq. ft	Yes
3	Bath	5'6" x 10'8"	59 sq. ft	Yes
4	Primary Bedroom	19'3" x 19'0"	365 sq. ft	Yes
5	Primary Bath	13'10" x 14'10"	205 sq. ft	Yes
6	Bath	6'10" x 6'4"	43 sq. ft	Yes
7	Bedroom	17'10" x 13'1"	233 sq. ft	Yes
8	Bath	8'10" x 7'8"	68 sq. ft	Yes
9	W.I.C.	5'6" x 6'4"	35 sq. ft	Yes
10	Bath	3'3" x 6'9"	22 sq. ft	Yes
11	Media Room	18'10" x 15'10"	298 sq. ft	Yes

Home data report

11 Glenhaven Dr, Reno, Washoe County, Nevada, United States, 89511

#		Dimensions	sqft	Counted as living area
12	Hall	39'5" x 25'4"	999 sq. ft	Yes
13	Dining Area	10'2" x 16'11"	172 sq. ft	Yes
14	Garage	22'10" x 43'10"	1001 sq. ft	No
15	W.I.C.	4'4" x 6'2"	27 sq. ft	Yes
16	Bedroom	12'6" x 16'11"	211 sq. ft	Yes
17	Bath	11'0" x 6'4"	70 sq. ft	Yes
18	W.I.C.	5'5" x 5'11"	32 sq. ft	Yes
19	Garage	13'11" x 22'10"	319 sq. ft	No
20	Living Room	25'0" x 19'9"	493 sq. ft	Yes
21	W.I.C.	5'3" x 5'8"	30 sq. ft	Yes
22	Hall	6'8" x 19'7"	130 sq. ft	Yes
23	W.I.C.	13'2" x 16'11"	222 sq. ft	Yes
24	Hall	39'3" x 8'9"	342 sq. ft	Yes
25	Bedroom	15'1" x 19'1"	288 sq. ft	Yes
26	Laundry	8'6" x 12'3"	103 sq. ft	Yes
27	Pantry	9'2" x 12'3"	112 sq. ft	Yes
28	Foyer	10'3" x 18'1"	185 sq. ft	Yes

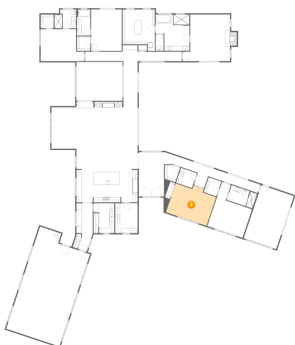
1 Floor 1 - Kitchen



Dimensions: 25'0" x 21'3"
Area: 530 sq. ft
Counted as living area: Yes

Heated: Yes
Finished: Yes
Enclosed: Yes
Contiguous: Yes
Permitted: Yes
Wet space: No
Addition: No
Conversion: No

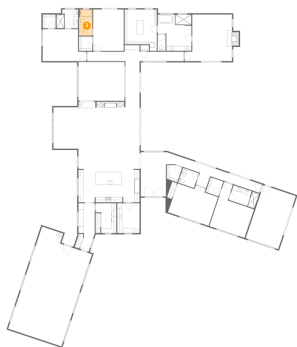
2 Floor 1 - Office



Dimensions: 17'5" x 14'0"
Area: 243 sq. ft
Counted as living area: Yes

Heated: Yes
Finished: Yes
Enclosed: Yes
Contiguous: Yes
Permitted: Yes
Wet space: No
Addition: No
Conversion: No

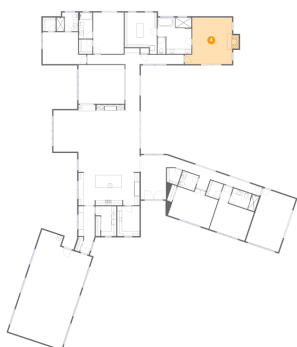
3 Floor 1 - Bath



Dimensions: 5'6" x 10'8"
Area: 59 sq. ft
Counted as living area: Yes

Heated: Yes
Finished: Yes
Enclosed: Yes
Contiguous: Yes
Permitted: Yes
Wet space: Yes
Addition: No
Conversion: No

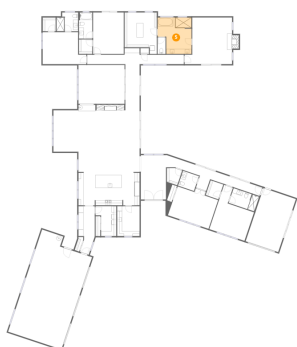
4 Floor 1 - Primary Bedroom



Dimensions: 19'3" x 19'0"
Area: 365 sq. ft
Counted as living area: Yes

Heated: Yes
Finished: Yes
Enclosed: Yes
Contiguous: Yes
Permitted: Yes
Wet space: No
Addition: No
Conversion: No

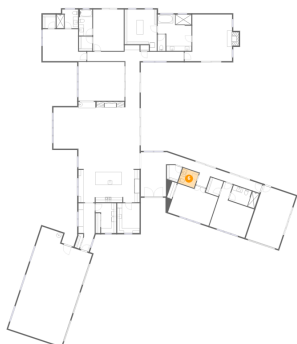
5 Floor 1 - Primary Bath



Dimensions: 13'10" x 14'10"
Area: 205 sq. ft
Counted as living area: Yes

Heated: Yes
Finished: Yes
Enclosed: Yes
Contiguous: Yes
Permitted: Yes
Wet space: Yes
Addition: No
Conversion: No

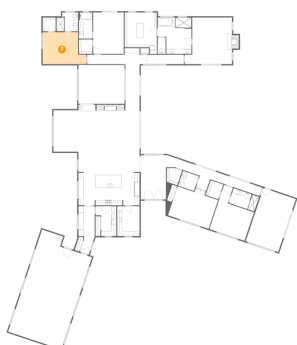
6 Floor 1 - Bath



Dimensions: 6'10" x 6'4"
Area: 43 sq. ft
Counted as living area: Yes

Heated: Yes
Finished: Yes
Enclosed: Yes
Contiguous: Yes
Permitted: Yes
Wet space: Yes
Addition: No
Conversion: No

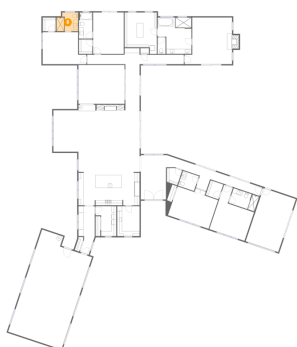
7 Floor 1 - Bedroom



Dimensions: 17'10" x 13'1"
Area: 233 sq. ft
Counted as living area: Yes

Heated: Yes
Finished: Yes
Enclosed: Yes
Contiguous: Yes
Permitted: Yes
Wet space: No
Addition: No
Conversion: No

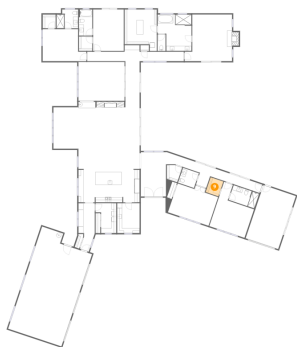
8 Floor 1 - Bath



Dimensions: 8'10" x 7'8"
Area: 68 sq. ft
Counted as living area: Yes

Heated: Yes
Finished: Yes
Enclosed: Yes
Contiguous: Yes
Permitted: Yes
Wet space: Yes
Addition: No
Conversion: No

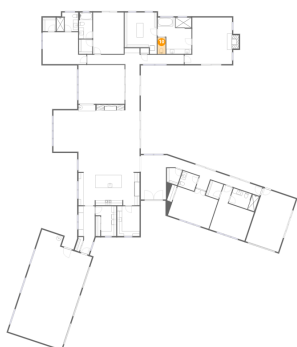
9 Floor 1 - W.I.C.



Dimensions: 5'6" x 6'4"
Area: 35 sq. ft
Counted as living area: Yes

Heated: Yes
Finished: Yes
Enclosed: Yes
Contiguous: Yes
Permitted: Yes
Wet space: No
Addition: No
Conversion: No

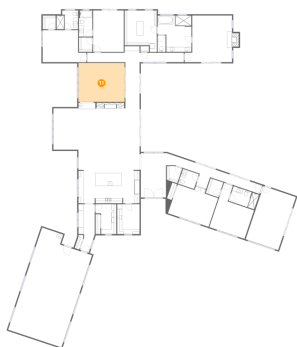
10 Floor 1 - Bath



Dimensions: 3'3" x 6'9"
Area: 22 sq. ft
Counted as living area: Yes

Heated: Yes
Finished: Yes
Enclosed: Yes
Contiguous: Yes
Permitted: Yes
Wet space: No
Addition: No
Conversion: No

11 Floor 1 - Media Room

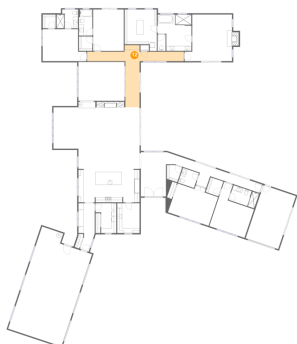


Dimensions: 18'10" x 15'10"
Area: 298 sq. ft
Counted as living area: Yes

Heated: Yes
Finished: Yes
Enclosed: Yes
Contiguous: Yes
Permitted: Yes
Wet space: No
Addition: No
Conversion: No

11 Glenhaven Dr, Reno, Washoe County, Nevada, United States, 89511

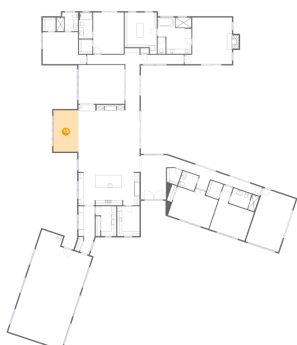
12 Floor 1 - Hall



Dimensions: 39'5" x 25'4"
Area: 999 sq. ft
Counted as living area: Yes

Heated: Yes
Finished: Yes
Enclosed: Yes
Contiguous: Yes
Permitted: Yes
Wet space: No
Addition: No
Conversion: No

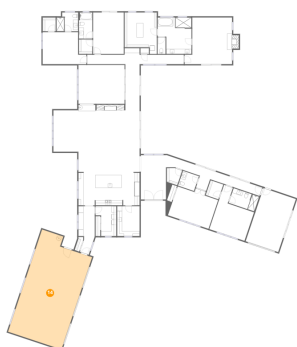
13 Floor 1 - Dining Area



Dimensions: 10'2" x 16'11"
Area: 172 sq. ft
Counted as living area: Yes

Heated: Yes
Finished: Yes
Enclosed: Yes
Contiguous: Yes
Permitted: Yes
Wet space: No
Addition: No
Conversion: No

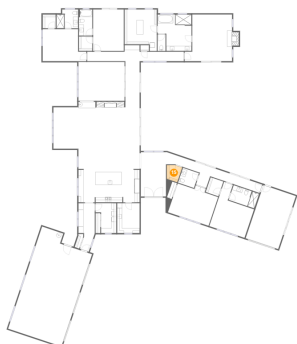
14 Floor 1 - Garage



Dimensions: 22'10" x 43'10"
Area: 1001 sq. ft
Counted as living area: No

Heated: No
Finished: No
Enclosed: Yes
Contiguous: Yes
Permitted: Yes
Wet space: No
Addition: No
Conversion: No

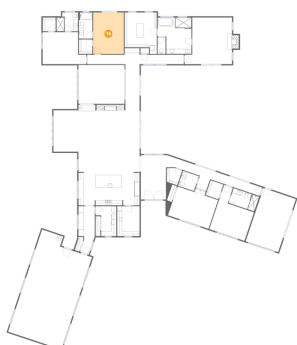
15 Floor 1 - W.I.C.



Dimensions: 4'4" x 6'2"
Area: 27 sq. ft
Counted as living area: Yes

Heated: Yes
Finished: Yes
Enclosed: Yes
Contiguous: Yes
Permitted: Yes
Wet space: No
Addition: No
Conversion: No

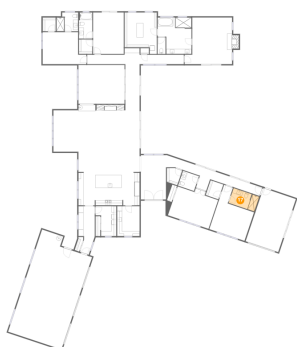
16 Floor 1 - Bedroom



Dimensions: 12'6" x 16'11"
Area: 211 sq. ft
Counted as living area: Yes

Heated: Yes
Finished: Yes
Enclosed: Yes
Contiguous: Yes
Permitted: Yes
Wet space: No
Addition: No
Conversion: No

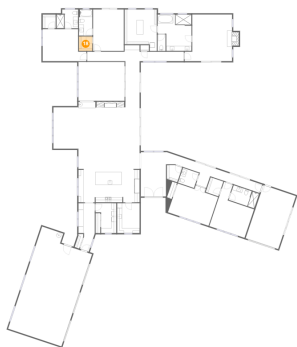
17 Floor 1 - Bath



Dimensions: 11'0" x 6'4"
Area: 70 sq. ft
Counted as living area: Yes

Heated: Yes
Finished: Yes
Enclosed: Yes
Contiguous: Yes
Permitted: Yes
Wet space: Yes
Addition: No
Conversion: No

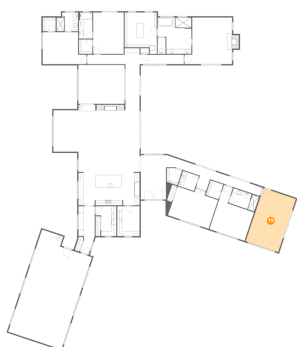
18 Floor 1 - W.I.C.



Dimensions: 5'5" x 5'11"
Area: 32 sq. ft
Counted as living area: Yes

Heated: Yes
Finished: Yes
Enclosed: Yes
Contiguous: Yes
Permitted: Yes
Wet space: No
Addition: No
Conversion: No

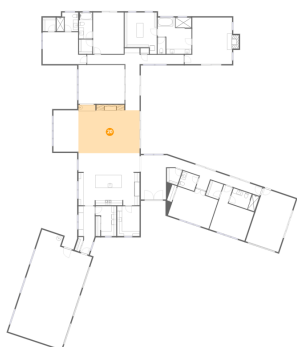
19 Floor 1 - Garage



Dimensions: 13'11" x 22'10"
Area: 319 sq. ft
Counted as living area: No

Heated: No
Finished: No
Enclosed: Yes
Contiguous: Yes
Permitted: Yes
Wet space: No
Addition: No
Conversion: No

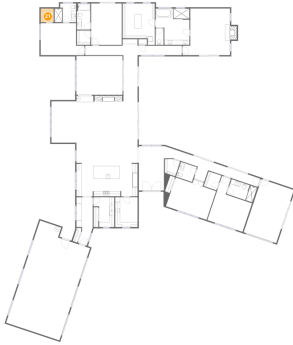
20 Floor 1 - Living Room



Dimensions: 25'0" x 19'9"
Area: 493 sq. ft
Counted as living area: Yes

Heated: Yes
Finished: Yes
Enclosed: Yes
Contiguous: Yes
Permitted: Yes
Wet space: No
Addition: No
Conversion: No

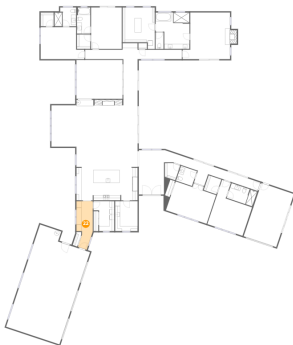
21 Floor 1 - W.I.C.



Dimensions: 5'3" x 5'8"
Area: 30 sq. ft
Counted as living area: Yes

Heated: Yes
Finished: Yes
Enclosed: Yes
Contiguous: Yes
Permitted: Yes
Wet space: No
Addition: No
Conversion: No

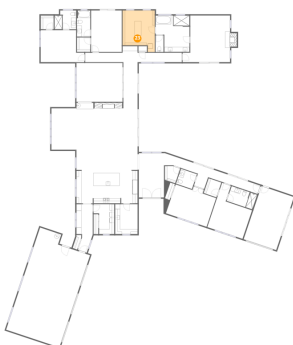
22 Floor 1 - Hall



Dimensions: 6'8" x 19'7"
Area: 130 sq. ft
Counted as living area: Yes

Heated: Yes
Finished: Yes
Enclosed: Yes
Contiguous: Yes
Permitted: Yes
Wet space: No
Addition: No
Conversion: No

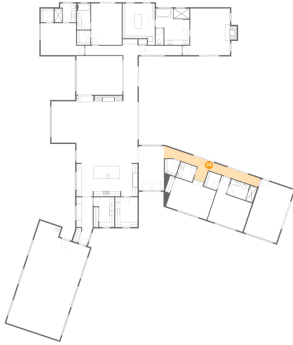
23 Floor 1 - W.I.C.



Dimensions: 13'2" x 16'11"
Area: 222 sq. ft
Counted as living area: Yes

Heated: Yes
Finished: Yes
Enclosed: Yes
Contiguous: Yes
Permitted: Yes
Wet space: No
Addition: No
Conversion: No

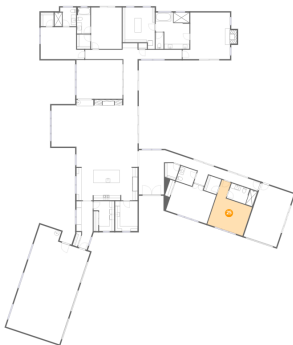
24 Floor 1 - Hall



Dimensions: 39'3" x 8'9"
Area: 342 sq. ft
Counted as living area: Yes

Heated: Yes
Finished: Yes
Enclosed: Yes
Contiguous: Yes
Permitted: Yes
Wet space: No
Addition: No
Conversion: No

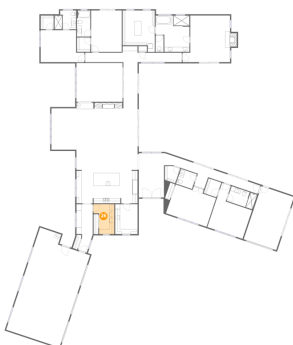
25 Floor 1 - Bedroom



Dimensions: 15'1" x 19'1"
Area: 288 sq. ft
Counted as living area: Yes

Heated: Yes
Finished: Yes
Enclosed: Yes
Contiguous: Yes
Permitted: Yes
Wet space: No
Addition: No
Conversion: No

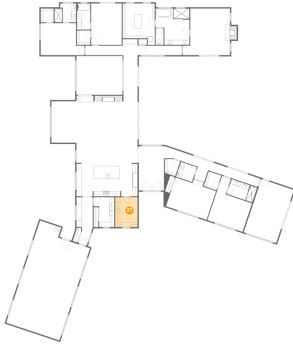
26 Floor 1 - Laundry



Dimensions: 8'6" x 12'3"
Area: 103 sq. ft
Counted as living area: Yes

Heated: Yes
Finished: Yes
Enclosed: Yes
Contiguous: Yes
Permitted: Yes
Wet space: No
Addition: No
Conversion: No

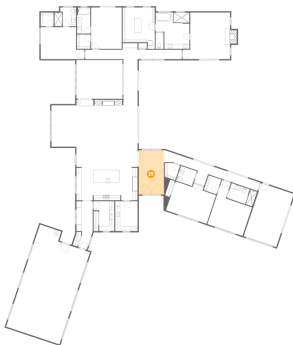
27 Floor 1 - Pantry



Dimensions: 9'2" x 12'3"
Area: 112 sq. ft
Counted as living area: Yes

Heated: Yes
Finished: Yes
Enclosed: Yes
Contiguous: Yes
Permitted: Yes
Wet space: No
Addition: No
Conversion: No

28 Floor 1 - Foyer



Dimensions: 10'3" x 18'1"
Area: 185 sq. ft
Counted as living area: Yes

Heated: Yes
Finished: Yes
Enclosed: Yes
Contiguous: Yes
Permitted: Yes
Wet space: No
Addition: No
Conversion: No