


2341 Sample Road, Allison Park, Allegheny County, Pennsylvania, United States, 15101




Property Summary

 **1** garages

 **3** bedrooms

 **1** bathrooms

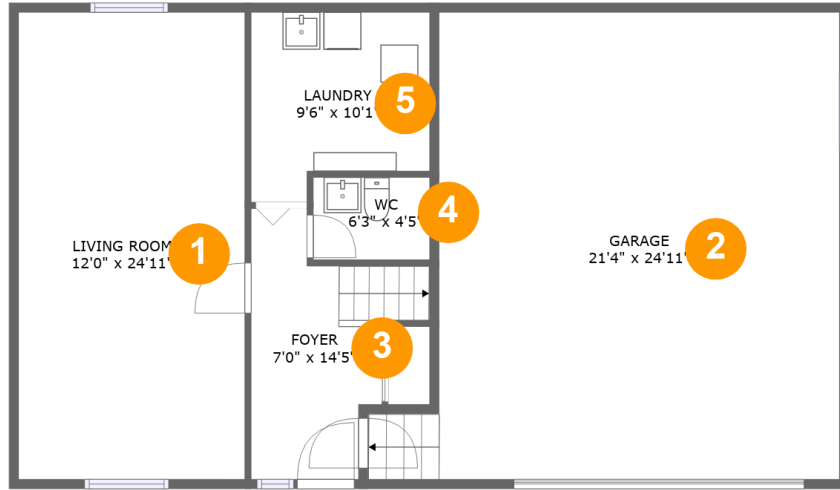
 **1** half baths

 **3** floors

 **1,810** Gross Living Area sqft

 **2,685** total sqft

2341 Sample Road, Allison Park, Allegheny County, Pennsylvania, United States, 15101



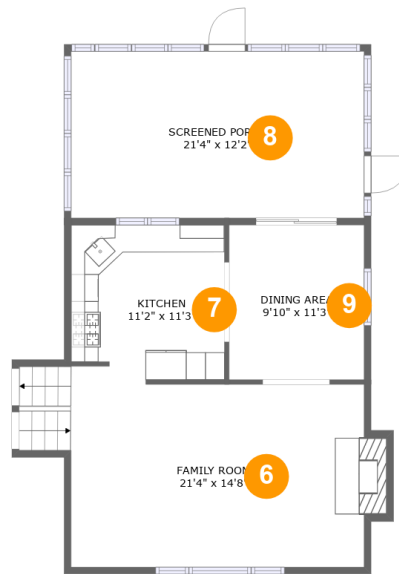
Room Dimensions

Floor 1

Total sqft: 1159

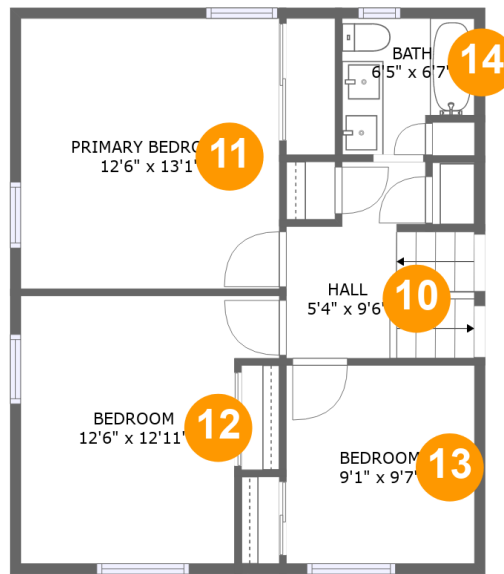
Living area: 578

#	Room name	Dimensions	Area (sqft)	Counted as Living Area
1	Living Room	12'0" x 24'11"	300 sq. ft	Yes
2	Garage	21'4" x 24'11"	546 sq. ft	No
3	Foyer	7'0" x 14'5"	91 sq. ft	Yes
4	Wc	6'3" x 4'5"	27 sq. ft	Yes
5	Laundry	9'6" x 10'1"	86 sq. ft	Yes

2341 Sample Road, Allison Park, Allegheny County, Pennsylvania, United States, 15101**Room Dimensions****Floor 2****Total sqft: 901****Living area: 607**

#	Room name	Dimensions	Area (sqft)	Counted as Living Area
6	Family Room	21'4" x 14'8"	324 sq. ft	Yes
7	Kitchen	11'2" x 11'3"	120 sq. ft	Yes
8	Screened Porch	21'4" x 12'2"	259 sq. ft	No
9	Dining Area	9'10" x 11'3"	111 sq. ft	Yes

2341 Sample Road, Allison Park, Allegheny County, Pennsylvania, United States, 15101



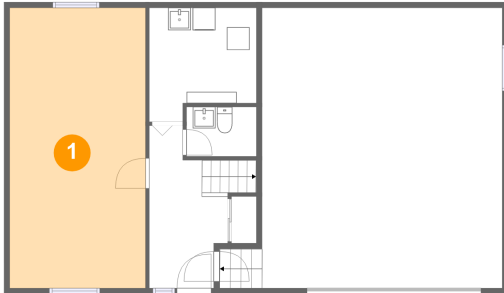
Room Dimensions

Floor 3**Total sqft: 625****Living area: 625**

#	Room name	Dimensions	Area (sqft)	Counted as Living Area
10	Hall	5'4" x 9'6"	69 sq. ft	Yes
11	Primary Bedroom	12'6" x 13'1"	163 sq. ft	Yes
12	Bedroom	12'6" x 12'11"	140 sq. ft	Yes
13	Bedroom	9'1" x 9'7"	87 sq. ft	Yes
14	Bath	6'5" x 6'7"	38 sq. ft	Yes

2341 Sample Road, Allison Park, Allegheny County, Pennsylvania, United States, 15101

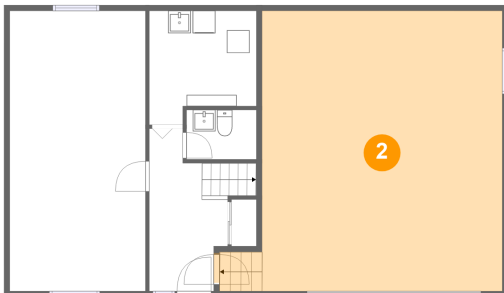
1 Floor 1 - Living Room



Dimensions: 12'0" x 24'11"
Area: 300 sq. ft
Counted as Living Area:
Yes

Heated: Yes
Finished: Yes
Enclosed: Yes
Contiguous:
Yes
Permitted: Yes
Wet Space: No
Addition: No
Conversion: No

2 Floor 1 - Garage

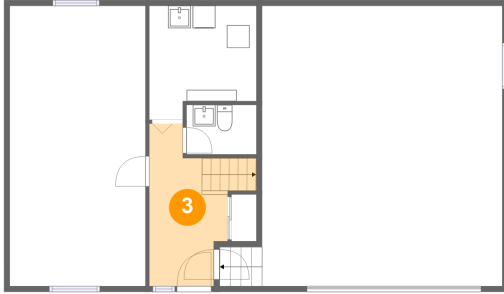


Dimensions: 21'4" x 24'11"
Area: 546 sq. ft
Counted as Living Area: No

Heated: No
Finished: No
Enclosed: Yes
Contiguous: Yes
Permitted: Yes
Wet Space: No
Addition: No
Conversion: No

2341 Sample Road, Allison Park, Allegheny County, Pennsylvania, United States, 15101

3 Floor 1 - Foyer



Dimensions: 7'0" x 14'5"
Area: 91 sq. ft
Counted as Living Area:
Yes

Heated: Yes
Finished: Yes
Enclosed: Yes
Contiguous:
Yes
Permitted: Yes
Wet Space: No
Addition: No
Conversion: No

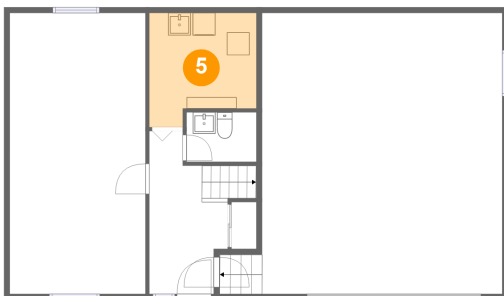
4 Floor 1 - Wc



Dimensions: 6'3" x 4'5"
Area: 27 sq. ft
Counted as Living Area:
Yes

Heated: Yes
Finished: Yes
Enclosed: Yes
Contiguous:
Yes
Permitted: Yes
Wet Space: Yes
Addition: No
Conversion: No

5 Floor 1 - Laundry

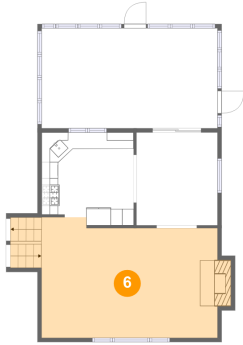


Dimensions: 9'6" x 10'1"
Area: 86 sq. ft
Counted as Living Area:
Yes

Heated: Yes
Finished: Yes
Enclosed: Yes
Contiguous:
Yes
Permitted: Yes
Wet Space: No
Addition: No
Conversion: No

2341 Sample Road, Allison Park, Allegheny County, Pennsylvania, United States, 15101

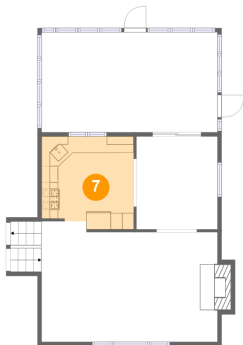
6 Floor 2 - Family Room



Dimensions: 21'4" x 14'8"
Area: 324 sq. ft
Counted as Living Area:
Yes

Heated: Yes
Finished: Yes
Enclosed: Yes
Contiguous:
Yes
Permitted: Yes
Wet Space: No
Addition: No
Conversion: No

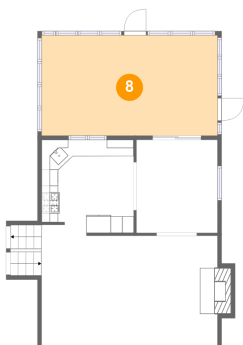
7 Floor 2 - Kitchen



Dimensions: 11'2" x 11'3"
Area: 120 sq. ft
Counted as Living Area:
Yes

Heated: Yes
Finished: Yes
Enclosed: Yes
Contiguous:
Yes
Permitted: Yes
Wet Space: No
Addition: No
Conversion: No

8 Floor 2 - Screened Porch

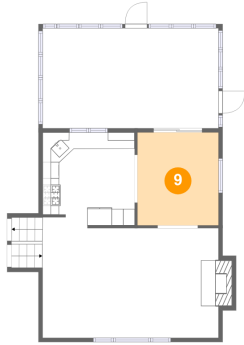


Dimensions: 21'4" x 12'2"
Area: 259 sq. ft
Counted as Living Area: No

Heated: No
Finished: Yes
Enclosed: No
Contiguous: Yes
Permitted: Yes
Wet Space: No
Addition: No
Conversion: No

2341 Sample Road, Allison Park, Allegheny County, Pennsylvania, United States, 15101

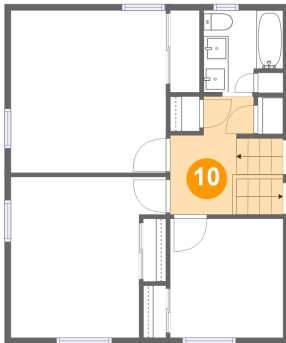
9 Floor 2 - Dining Area



Dimensions: 9'10" x 11'3"
Area: 111 sq. ft
Counted as Living Area:
Yes

Heated: Yes
Finished: Yes
Enclosed: Yes
Contiguous:
Yes
Permitted: Yes
Wet Space: No
Addition: No
Conversion: No

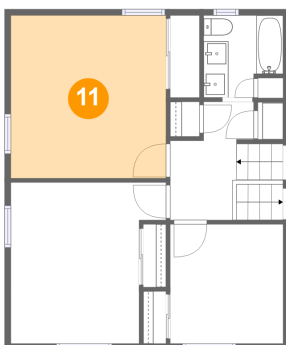
10 Floor 3 - Hall



Dimensions: 5'4" x 9'6"
Area: 69 sq. ft
Counted as Living Area:
Yes

Heated: Yes
Finished: Yes
Enclosed: Yes
Contiguous:
Yes
Permitted: Yes
Wet Space: No
Addition: No
Conversion: No

11 Floor 3 - Primary Bedroom

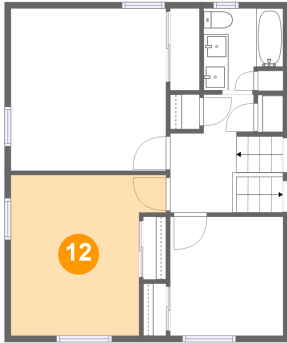


Dimensions: 12'6" x 13'1"
Area: 163 sq. ft
Counted as Living Area:
Yes

Heated: Yes
Finished: Yes
Enclosed: Yes
Contiguous:
Yes
Permitted: Yes
Wet Space: No
Addition: No
Conversion: No

2341 Sample Road, Allison Park, Allegheny County, Pennsylvania, United States, 15101

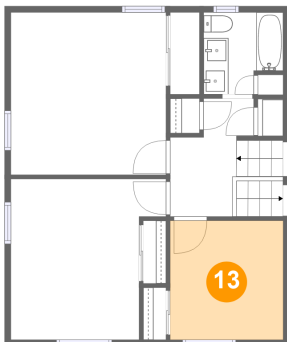
12 Floor 3 - Bedroom



Dimensions: 12'6" x 12'11"
Area: 140 sq. ft
Counted as Living Area:
Yes

Heated: Yes
Finished: Yes
Enclosed: Yes
Contiguous:
Yes
Permitted: Yes
Wet Space: No
Addition: No
Conversion: No

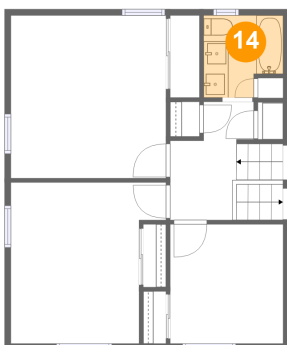
13 Floor 3 - Bedroom



Dimensions: 9'1" x 9'7"
Area: 87 sq. ft
Counted as Living Area:
Yes

Heated: Yes
Finished: Yes
Enclosed: Yes
Contiguous:
Yes
Permitted: Yes
Wet Space: No
Addition: No
Conversion: No

14 Floor 3 - Bath



Dimensions: 6'5" x 6'7"
Area: 38 sq. ft
Counted as Living Area:
Yes

Heated: Yes
Finished: Yes
Enclosed: Yes
Contiguous:
Yes
Permitted: Yes
Wet Space: Yes
Addition: No
Conversion: No