



Home report


726 Bunchberry Way, Riverside South, Gloucester, Ontario,
Canada, K1T 0J8





Property summary


 **1** Garages


 **5** Bedrooms

 **3** Bathrooms

 **1** Half baths

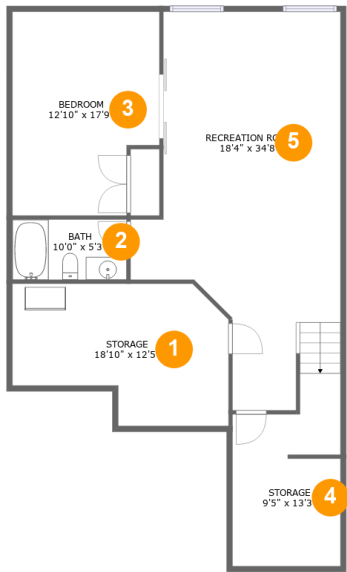
 **3** Floors

 **3,452** Gross living area sqft

 **4,199** Total sqft

Home report

726 Bunchberry Way, Riverside South, Gloucester, Ontario,
Canada, K1T 0J8



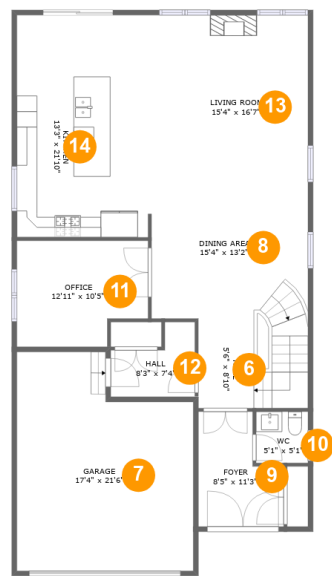
Room dimensions

Floor 1 Total sqft: 1192 Living area: 837

#		Dimensions	sqft	Counted as living area
1	Storage	18'10" x 12'5"	196 sq. ft	No
2	Bath	10'0" x 5'3"	52 sq. ft	Yes
3	Bedroom	12'10" x 17'9"	210 sq. ft	Yes
4	Storage	9'5" x 13'3"	123 sq. ft	No
5	Recreation Room	18'4" x 34'8"	488 sq. ft	Yes

Home report

726 Bunchberry Way, Riverside South, Gloucester, Ontario,
Canada, K1T 0J8



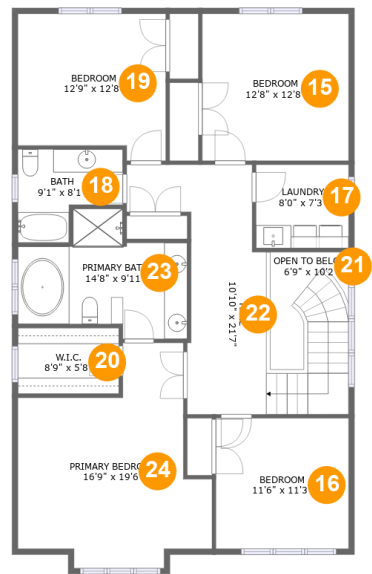
Room dimensions

Floor 2 Total sqft: 1595 Living area: 1243

#		Dimensions	sqft	Counted as living area
6	Hall	5'6" x 8'10"	95 sq. ft	Yes
7	Garage	17'4" x 21'6"	330 sq. ft	No
8	Dining Area	15'4" x 13'2"	202 sq. ft	Yes
9	Foyer	8'5" x 11'3"	78 sq. ft	Yes
10	WC	5'1" x 5'1"	26 sq. ft	Yes
11	Office	12'11" x 10'5"	123 sq. ft	Yes
12	Hall	8'3" x 7'4"	47 sq. ft	Yes
13	Living Room	15'4" x 16'7"	255 sq. ft	Yes
14	Kitchen	13'3" x 21'10"	288 sq. ft	Yes

Home report

726 Bunchberry Way, Riverside South, Gloucester, Ontario, Canada, K1T 0J8



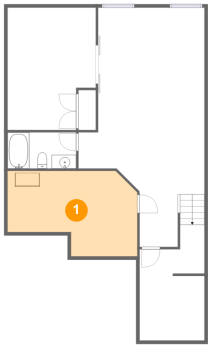
Room dimensions

Floor 3 Total sqft: 1412 Living area: 1372

#		Dimensions	sqft	Counted as living area
15	Bedroom	12'8" x 12'8"	161 sq. ft	Yes
16	Bedroom	11'6" x 11'3"	129 sq. ft	Yes
17	Laundry	8'0" x 7'3"	58 sq. ft	Yes
18	Bath	9'1" x 8'1"	58 sq. ft	Yes
19	Bedroom	12'9" x 12'8"	150 sq. ft	Yes
20	W.I.C.	8'9" x 5'8"	50 sq. ft	Yes
21	Open To Below	6'9" x 10'2"	38 sq. ft	No
22	Hall	10'10" x 21'7"	218 sq. ft	Yes
23	Primary Bath	14'8" x 9'11"	121 sq. ft	Yes
24	Primary Bedroom	16'9" x 19'6"	239 sq. ft	Yes

726 Bunchberry Way, Riverside South, Gloucester, Ontario,
Canada, K1T 0J8

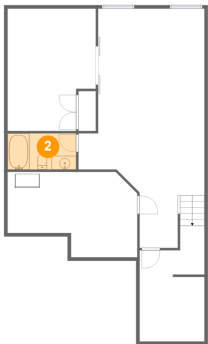
1 Floor 1 - Storage



Dimensions: 18'10" x 12'5"
Area: 196 sq. ft
Counted as living area: No

Heated: No
Finished: No
Enclosed: No
Contiguous: Yes
Permitted: Yes
Wet space: No
Addition: No
Conversion: No

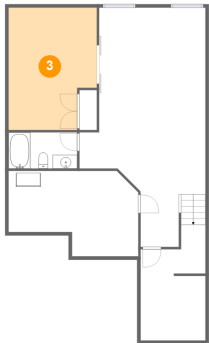
2 Floor 1 - Bath



Dimensions: 10'0" x 5'3"
Area: 52 sq. ft
Counted as living area: Yes

Heated: Yes
Finished: Yes
Enclosed: Yes
Contiguous: Yes
Permitted: Yes
Wet space: Yes
Addition: No
Conversion: No

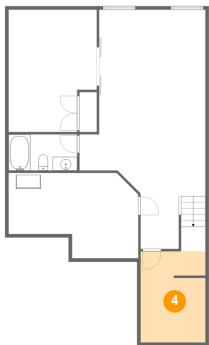
3 Floor 1 - Bedroom



Dimensions: 12'10" x 17'9"
Area: 210 sq. ft
Counted as living area: Yes

Heated: Yes
Finished: Yes
Enclosed: Yes
Contiguous: Yes
Permitted: Yes
Wet space: No
Addition: No
Conversion: No

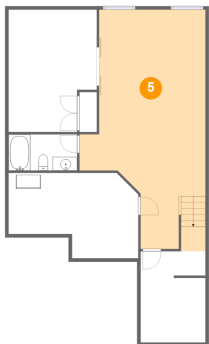
4 Floor 1 - Storage



Dimensions: 9'5" x 13'3"
Area: 123 sq. ft
Counted as living area: No

Heated: No
Finished: No
Enclosed: No
Contiguous: Yes
Permitted: Yes
Wet space: No
Addition: No
Conversion: No

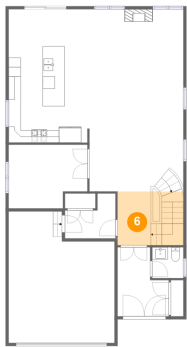
5 Floor 1 - Recreation Room



Dimensions: 18'4" x 34'8"
Area: 488 sq. ft
Counted as living area: Yes

Heated: Yes
Finished: Yes
Enclosed: Yes
Contiguous: Yes
Permitted: Yes
Wet space: No
Addition: No
Conversion: No

6 Floor 2 - Hall



Dimensions: 5'6" x 8'10"
Area: 95 sq. ft
Counted as living area: Yes

Heated: Yes
Finished: Yes
Enclosed: Yes
Contiguous: Yes
Permitted: Yes
Wet space: No
Addition: No
Conversion: No

7 Floor 2 - Garage



Dimensions: 17'4" x 21'6"
Area: 330 sq. ft
Counted as living area: No

Heated: No
Finished: No
Enclosed: Yes
Contiguous: Yes
Permitted: Yes
Wet space: No
Addition: No
Conversion: No

8 Floor 2 - Dining Area



Dimensions: 15'4" x 13'2"
Area: 202 sq. ft
Counted as living area: Yes

Heated: Yes
Finished: Yes
Enclosed: Yes
Contiguous: Yes
Permitted: Yes
Wet space: No
Addition: No
Conversion: No

726 Bunchberry Way, Riverside South, Gloucester, Ontario,
Canada, K1T 0J8

9 Floor 2 - Foyer



Dimensions: 8'5" x 11'3"
Area: 78 sq. ft
Counted as living area: Yes

Heated: Yes
Finished: Yes
Enclosed: Yes
Contiguous: Yes
Permitted: Yes
Wet space: No
Addition: No
Conversion: No

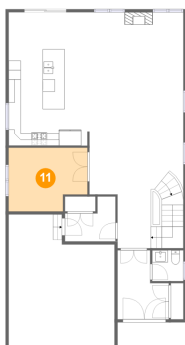
10 Floor 2 - WC



Dimensions: 5'1" x 5'1"
Area: 26 sq. ft
Counted as living area: Yes

Heated: Yes
Finished: Yes
Enclosed: Yes
Contiguous: Yes
Permitted: Yes
Wet space: Yes
Addition: No
Conversion: No

11 Floor 2 - Office



Dimensions: 12'11" x 10'5"
Area: 123 sq. ft
Counted as living area: Yes

Heated: Yes
Finished: Yes
Enclosed: Yes
Contiguous: Yes
Permitted: Yes
Wet space: No
Addition: No
Conversion: No

726 Bunchberry Way, Riverside South, Gloucester, Ontario,
Canada, K1T 0J8

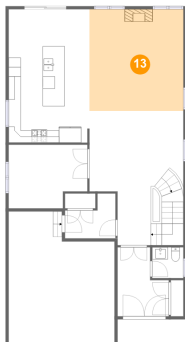
12 Floor 2 - Hall



Dimensions: 8'3" x 7'4"
Area: 47 sq. ft
Counted as living area: Yes

Heated: Yes
Finished: Yes
Enclosed: Yes
Contiguous: Yes
Permitted: Yes
Wet space: No
Addition: No
Conversion: No

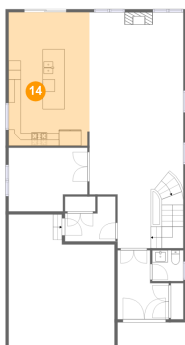
13 Floor 2 - Living Room



Dimensions: 15'4" x 16'7"
Area: 255 sq. ft
Counted as living area: Yes

Heated: Yes
Finished: Yes
Enclosed: Yes
Contiguous: Yes
Permitted: Yes
Wet space: No
Addition: No
Conversion: No

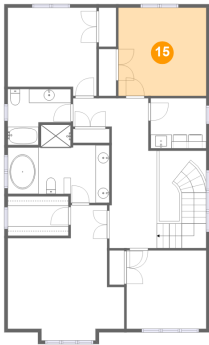
14 Floor 2 - Kitchen



Dimensions: 13'3" x 21'10"
Area: 288 sq. ft
Counted as living area: Yes

Heated: Yes
Finished: Yes
Enclosed: Yes
Contiguous: Yes
Permitted: Yes
Wet space: No
Addition: No
Conversion: No

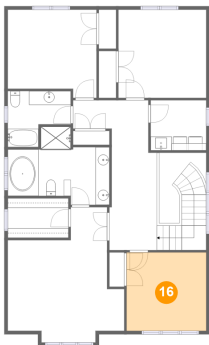
15 Floor 3 - Bedroom



Dimensions: 12'8" x 12'8"
Area: 161 sq. ft
Counted as living area: Yes

Heated: Yes
Finished: Yes
Enclosed: Yes
Contiguous: Yes
Permitted: Yes
Wet space: No
Addition: No
Conversion: No

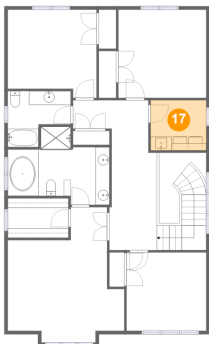
16 Floor 3 - Bedroom



Dimensions: 11'6" x 11'3"
Area: 129 sq. ft
Counted as living area: Yes

Heated: Yes
Finished: Yes
Enclosed: Yes
Contiguous: Yes
Permitted: Yes
Wet space: No
Addition: No
Conversion: No

17 Floor 3 - Laundry

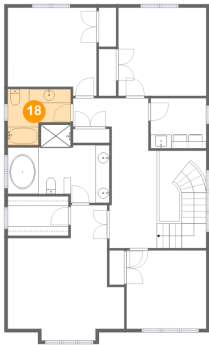


Dimensions: 8'0" x 7'3"
Area: 58 sq. ft
Counted as living area: Yes

Heated: Yes
Finished: Yes
Enclosed: Yes
Contiguous: Yes
Permitted: Yes
Wet space: No
Addition: No
Conversion: No

726 Bunchberry Way, Riverside South, Gloucester, Ontario,
Canada, K1T 0J8

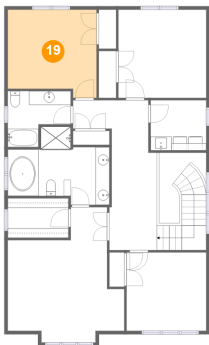
18 Floor 3 - Bath



Dimensions: 9'1" x 8'1"
Area: 58 sq. ft
Counted as living area: Yes

Heated: Yes
Finished: Yes
Enclosed: Yes
Contiguous: Yes
Permitted: Yes
Wet space: Yes
Addition: No
Conversion: No

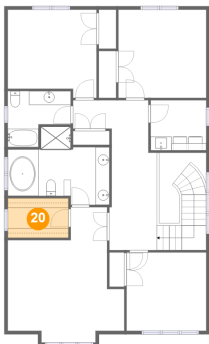
19 Floor 3 - Bedroom



Dimensions: 12'9" x 12'8"
Area: 150 sq. ft
Counted as living area: Yes

Heated: Yes
Finished: Yes
Enclosed: Yes
Contiguous: Yes
Permitted: Yes
Wet space: No
Addition: No
Conversion: No

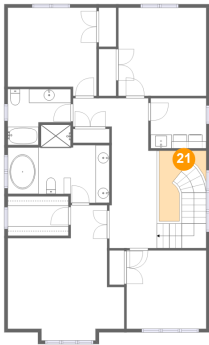
20 Floor 3 - W.I.C.



Dimensions: 8'9" x 5'8"
Area: 50 sq. ft
Counted as living area: Yes

Heated: Yes
Finished: Yes
Enclosed: Yes
Contiguous: Yes
Permitted: Yes
Wet space: No
Addition: No
Conversion: No

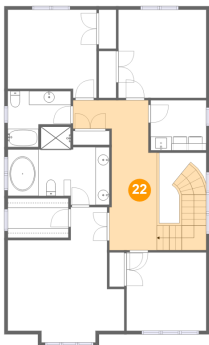
21 Floor 3 - Open To Below



Dimensions: 6'9" x 10'2"
Area: 38 sq. ft
Counted as living area: No

Heated: No
Finished: No
Enclosed: No
Contiguous: Yes
Permitted: No
Wet space: No
Addition: No
Conversion: No

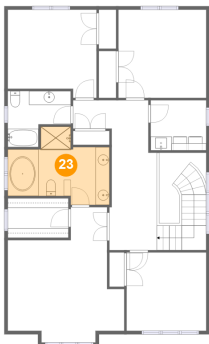
22 Floor 3 - Hall



Dimensions: 10'10" x 21'7"
Area: 218 sq. ft
Counted as living area: Yes

Heated: Yes
Finished: Yes
Enclosed: Yes
Contiguous: Yes
Permitted: Yes
Wet space: No
Addition: No
Conversion: No

23 Floor 3 - Primary Bath



Dimensions: 14'8" x 9'11"
Area: 121 sq. ft
Counted as living area: Yes

Heated: Yes
Finished: Yes
Enclosed: Yes
Contiguous: Yes
Permitted: Yes
Wet space: Yes
Addition: No
Conversion: No

726 Bunchberry Way, Riverside South, Gloucester, Ontario,
Canada, K1T 0J8

24 Floor 3 - Primary Bedroom



Dimensions: 16'9" x 19'6"
Area: 239 sq. ft
Counted as living area: Yes

Heated: Yes
Finished: Yes
Enclosed: Yes
Contiguous: Yes
Permitted: Yes
Wet space: No
Addition: No
Conversion: No