

Home report

818 Day Avenue Southwest, Old Southwest, Roanoke, Roanoke city, Virginia, United States, 24016



Total GLA: 2605 sq. ft

Below Ground: 0 sq. ft, Floor 2: 995 sq. ft, Floor 3: 1178 sq. ft, Floor 4: 432 sq. ft  
Excluded: Utility 491 sq. ft, Storage 141 sq. ft, Screened porch 183 sq. ft, Porch 197 sq. ft, Covered patio 348 sq. ft, Deck 37 sq. ft, Fireplace 13 sq. ft, Low ceiling 68 sq. ft

Property summary

 **4** Floors

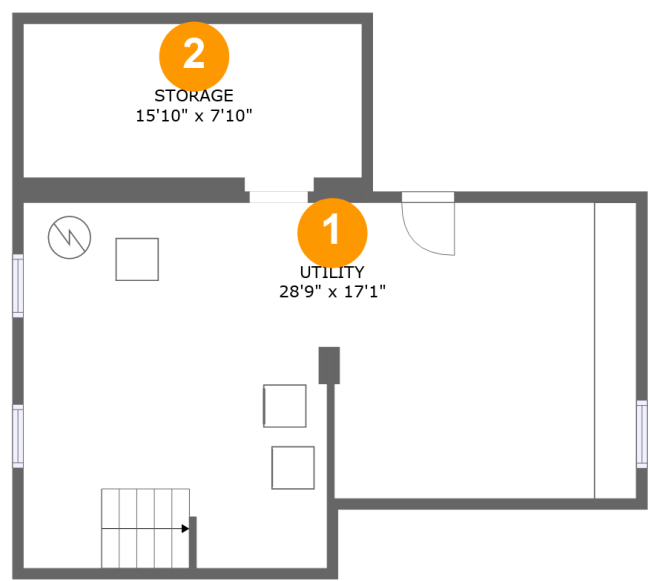
 **4** Bedrooms

 **1** Bathrooms

 **1** Half baths

Home report

818 Day Avenue Southwest, Old Southwest, Roanoke, Roanoke city, Virginia, United States, 24016



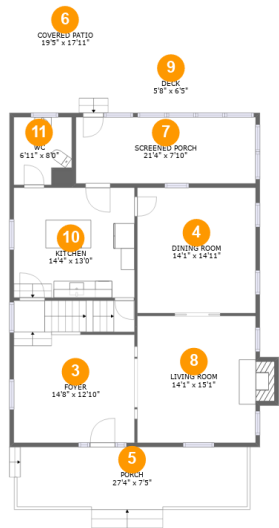
Room dimensions

Floor 1 Below ground Total:0sqft    Excluded: 632sqft

#		Max Dimensions	sqft	Included
1	Utility	28'9" x 17'1"	441 sq. ft	No
2	Storage	15'10" x 7'10"	125 sq. ft	No

Home report

818 Day Avenue Southwest, Old Southwest, Roanoke, Roanoke city, Virginia, United States, 24016



Room dimensions

Floor 2

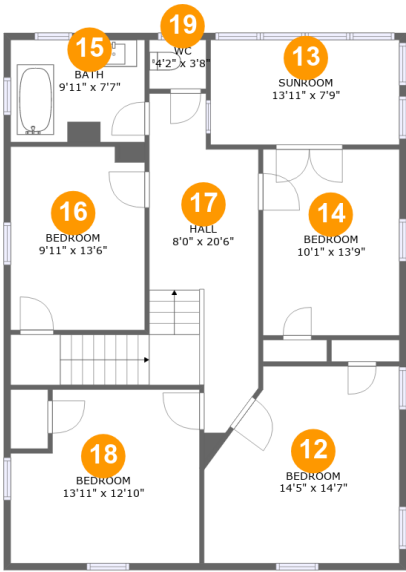
Total:995sqft

Excluded: 778sqft

#		Max Dimensions	sqft	Included
3	Foyer	14'8" x 12'10"	243 sq. ft	Yes
4	Dining Room	14'1" x 14'11"	209 sq. ft	Yes
5	Porch	27'4" x 7'5"	197 sq. ft	No
6	Covered Patio	19'5" x 17'11"	348 sq. ft	No
7	Screened Porch	21'4" x 7'10"	168 sq. ft	No
8	Living Room	14'1" x 15'1"	222 sq. ft	Yes
9	Deck	5'8" x 6'5"	37 sq. ft	No
10	Kitchen	14'4" x 13'0"	187 sq. ft	Yes
11	WC	6'11" x 8'0"	50 sq. ft	Yes

Home report

818 Day Avenue Southwest, Old Southwest, Roanoke, Roanoke city, Virginia, United States, 24016



Room dimensions

Floor 3

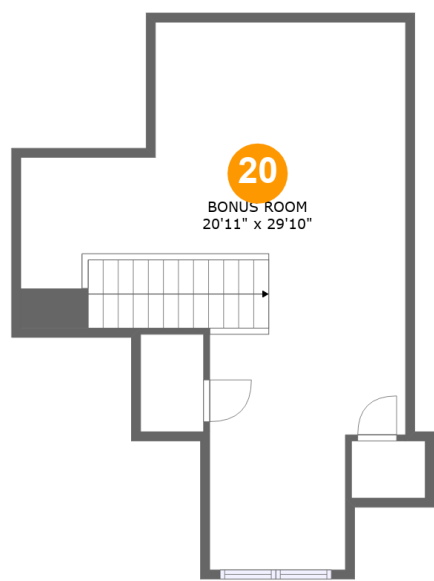
Total:1178sqft

Excluded: 0sqft

#		Max Dimensions	sqft	Included
12	Bedroom	14'5" x 14'7"	189 sq. ft	Yes
13	Sunroom	13'11" x 7'9"	108 sq. ft	Yes
14	Bedroom	10'1" x 13'9"	138 sq. ft	Yes
15	Bath	9'11" x 7'7"	75 sq. ft	Yes
16	Bedroom	9'11" x 13'6"	132 sq. ft	Yes
17	Hall	8'0" x 20'6"	208 sq. ft	Yes
18	Bedroom	13'11" x 12'10"	164 sq. ft	Yes
19	WC	4'2" x 3'8"	15 sq. ft	Yes

Home report

818 Day Avenue Southwest, Old Southwest, Roanoke, Roanoke city, Virginia, United States, 24016

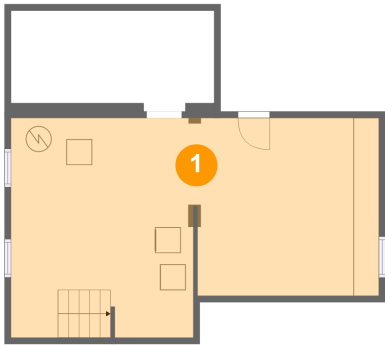


Room dimensions

Floor 4 Total:432sqft   Excluded: 68sqft

#		Max Dimensions	sqft	Included
20	Bonus Room	20'11" x 29'10"	361 sq. ft	Yes

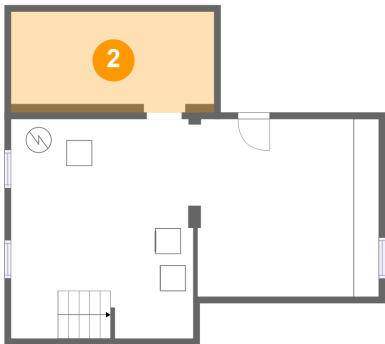
1 Floor 1 - Utility



Max Dimensions: 28'9" x 17'1"  
Calculated Area: 441 sq. ft  
Included: No

Heated: Yes  
Finished: No  
Enclosed: Yes  
Contiguous: Yes  
Permitted: Yes  
Wet space: No  
Addition: No  
Conversion: No

2 Floor 1 - Storage



Max Dimensions: 15'10" x 7'10"  
Calculated Area: 125 sq. ft  
Included: No

Heated: No  
Finished: No  
Enclosed: No  
Contiguous: Yes  
Permitted: Yes  
Wet space: No  
Addition: No  
Conversion: No

3 Floor 2 - Foyer



Max Dimensions: 14'8" x 12'10"  
Calculated Area: 243 sq. ft  
Included: Yes

Heated: Yes  
Finished: Yes  
Enclosed: Yes  
Contiguous: Yes  
Permitted: Yes  
Wet space: No  
Addition: No  
Conversion: No

4 Floor 2 - Dining Room



Max Dimensions: 14'1" x 14'11"  
Calculated Area: 209 sq. ft  
Included: Yes

Heated: Yes  
Finished: Yes  
Enclosed: Yes  
Contiguous: Yes  
Permitted: Yes  
Wet space: No  
Addition: No  
Conversion: No

5 Floor 2 - Porch



Max Dimensions: 27'4" x 7'5"  
Calculated Area: 197 sq. ft  
Included: No

Heated: No  
Finished: Yes  
Enclosed: No  
Contiguous: Yes  
Permitted: Yes  
Wet space: No  
Addition: No  
Conversion: No

818 Day Avenue Southwest, Old Southwest, Roanoke, Roanoke city, Virginia, United States, 24016

6 Floor 2 - Covered Patio



Max Dimensions: 19'5" x 17'11"  
Calculated Area: 348 sq. ft  
Included: No

Heated: No  
Finished: Yes  
Enclosed: No  
Contiguous: Yes  
Permitted: Yes  
Wet space: No  
Addition: No  
Conversion: No

7 Floor 2 - Screened Porch



Max Dimensions: 21'4" x 7'10"  
Calculated Area: 168 sq. ft  
Included: No

Heated: No  
Finished: Yes  
Enclosed: No  
Contiguous: Yes  
Permitted: Yes  
Wet space: No  
Addition: No  
Conversion: No

8 Floor 2 - Living Room



Max Dimensions: 14'1" x 15'1"  
Calculated Area: 222 sq. ft  
Included: Yes

Heated: Yes  
Finished: Yes  
Enclosed: Yes  
Contiguous: Yes  
Permitted: Yes  
Wet space: No  
Addition: No  
Conversion: No



818 Day Avenue Southwest, Old Southwest, Roanoke, Roanoke city, Virginia, United States, 24016

9 Floor 2 - Deck



Max Dimensions: 5'8" x 6'5"  
Calculated Area: 37 sq. ft  
Included: No

Heated: No  
Finished: Yes  
Enclosed: No  
Contiguous: Yes  
Permitted: Yes  
Wet space: No  
Addition: No  
Conversion: No

10 Floor 2 - Kitchen



Max Dimensions: 14'4" x 13'0"  
Calculated Area: 187 sq. ft  
Included: Yes

Heated: Yes  
Finished: Yes  
Enclosed: Yes  
Contiguous: Yes  
Permitted: Yes  
Wet space: No  
Addition: No  
Conversion: No

11 Floor 2 - WC

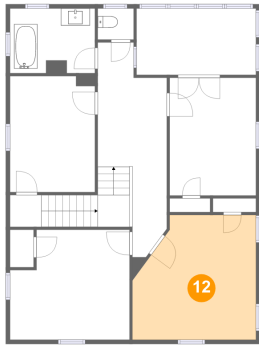


Max Dimensions: 6'11" x 8'0"  
Calculated Area: 50 sq. ft  
Included: Yes

Heated: Yes  
Finished: Yes  
Enclosed: Yes  
Contiguous: Yes  
Permitted: Yes  
Wet space: Yes  
Addition: No  
Conversion: No

818 Day Avenue Southwest, Old Southwest, Roanoke, Roanoke city, Virginia, United States, 24016

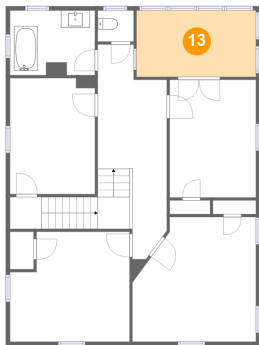
## 12 Floor 3 - Bedroom



Max Dimensions: 14'5" x 14'7"  
Calculated Area: 189 sq. ft  
Included: Yes

Heated: Yes  
Finished: Yes  
Enclosed: Yes  
Contiguous: Yes  
Permitted: Yes  
Wet space: No  
Addition: No  
Conversion: No

## 13 Floor 3 - Sunroom



Max Dimensions: 13'11" x 7'9"  
Calculated Area: 108 sq. ft  
Included: Yes

Heated: Yes  
Finished: Yes  
Enclosed: Yes  
Contiguous: Yes  
Permitted: Yes  
Wet space: No  
Addition: No  
Conversion: No

## 14 Floor 3 - Bedroom



Max Dimensions: 10'1" x 13'9"  
Calculated Area: 138 sq. ft  
Included: Yes

Heated: Yes  
Finished: Yes  
Enclosed: Yes  
Contiguous: Yes  
Permitted: Yes  
Wet space: No  
Addition: No  
Conversion: No

818 Day Avenue Southwest, Old Southwest, Roanoke, Roanoke city, Virginia, United States, 24016

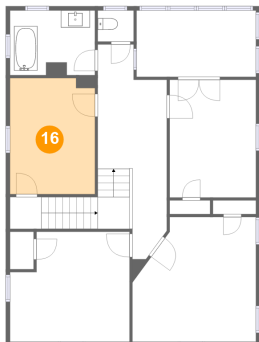
### 15 Floor 3 - Bath



Max Dimensions: 9'11" x 7'7"  
Calculated Area: 75 sq. ft  
Included: Yes

Heated: Yes  
Finished: Yes  
Enclosed: Yes  
Contiguous: Yes  
Permitted: Yes  
Wet space: Yes  
Addition: No  
Conversion: No

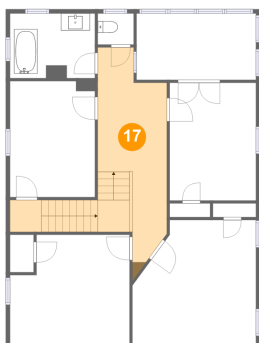
### 16 Floor 3 - Bedroom



Max Dimensions: 9'11" x 13'6"  
Calculated Area: 132 sq. ft  
Included: Yes

Heated: Yes  
Finished: Yes  
Enclosed: Yes  
Contiguous: Yes  
Permitted: Yes  
Wet space: No  
Addition: No  
Conversion: No

### 17 Floor 3 - Hall

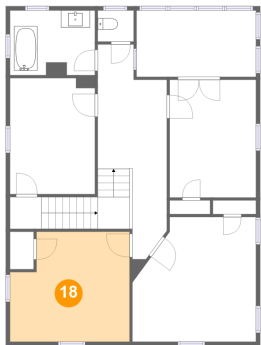


Max Dimensions: 8'0" x 20'6"  
Calculated Area: 208 sq. ft  
Included: Yes

Heated: Yes  
Finished: Yes  
Enclosed: Yes  
Contiguous: Yes  
Permitted: Yes  
Wet space: No  
Addition: No  
Conversion: No

818 Day Avenue Southwest, Old Southwest, Roanoke, Roanoke city, Virginia, United States, 24016

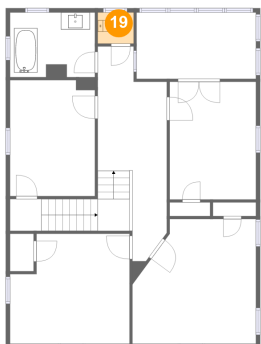
18 Floor 3 - Bedroom



Max Dimensions: 13'11" x 12'10"  
Calculated Area: 164 sq. ft  
Included: Yes

Heated: Yes  
Finished: Yes  
Enclosed: Yes  
Contiguous: Yes  
Permitted: Yes  
Wet space: No  
Addition: No  
Conversion: No

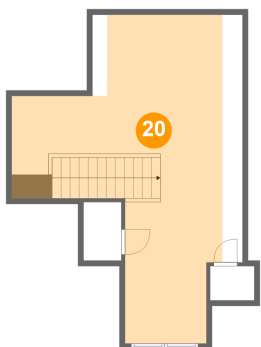
19 Floor 3 - WC



Max Dimensions: 4'2" x 3'8"  
Calculated Area: 15 sq. ft  
Included: Yes

Heated: Yes  
Finished: Yes  
Enclosed: Yes  
Contiguous: Yes  
Permitted: Yes  
Wet space: Yes  
Addition: No  
Conversion: No

20 Floor 4 - Bonus Room



Max Dimensions: 20'11" x 29'10"  
Calculated Area: 361 sq. ft  
Included: Yes

Heated: Yes  
Finished: Yes  
Enclosed: Yes  
Contiguous: Yes  
Permitted: Yes  
Wet space: No  
Addition: No  
Conversion: No