

2672 Green Spot Ln, Spearfish, SD, US

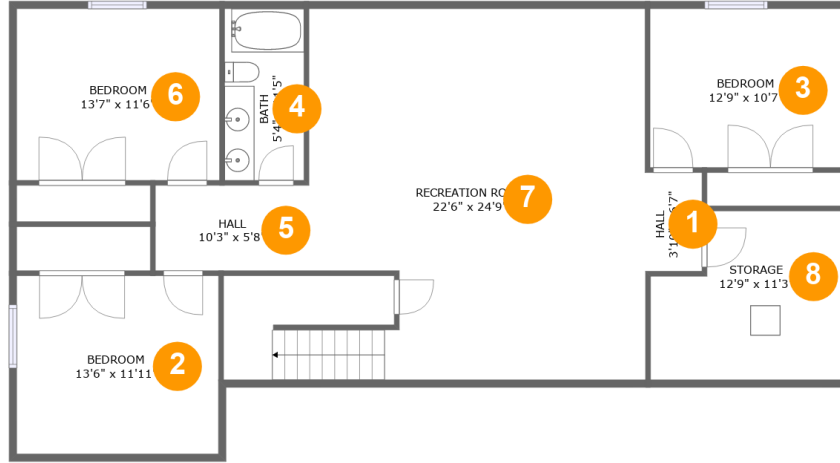


Property Summary

1 garages **6** bedrooms **3** bathrooms **0** half baths

2 floors **2,931** Gross Living Area sqft **4,140** total sqft

2672 Green Spot Ln, Spearfish, SD, US



Room Dimensions

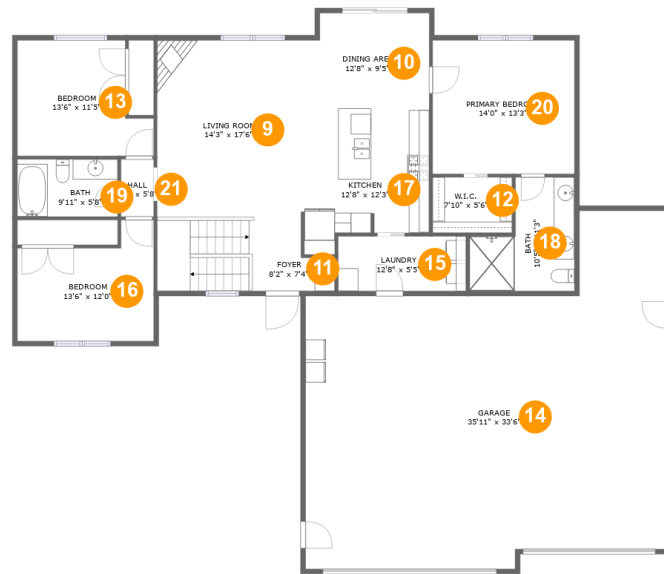
Floor 1

Total sqft: 1520

Living area: 1380

#	Room name	Dimensions	Area (sqft)	Counted as Living Area
1	Hall	3'10" x 6'7"	25 sq. ft	Yes
2	Bedroom	13'6" x 11'11"	161 sq. ft	Yes
3	Bedroom	12'9" x 10'7"	136 sq. ft	Yes
4	Bath	5'4" x 11'5"	61 sq. ft	Yes
5	Hall	10'3" x 5'8"	59 sq. ft	Yes
6	Bedroom	13'7" x 11'6"	155 sq. ft	Yes
7	Recreation Room	22'6" x 24'9"	564 sq. ft	Yes
8	Storage	12'9" x 11'3"	127 sq. ft	No

2672 Green Spot Ln, Spearfish, SD, US



Room Dimensions

Floor 2

Total sqft: 2620

Living area: 1551

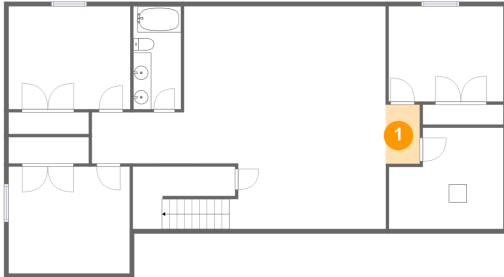
#	Room name	Dimensions	Area (sqft)	Counted as Living Area
9	Living Room	14'3" x 17'6"	249 sq. ft	Yes
10	Dining Area	12'8" x 9'5"	114 sq. ft	Yes
11	Foyer	8'2" x 7'4"	115 sq. ft	Yes
12	W.i.c.	7'10" x 5'6"	43 sq. ft	Yes
13	Bedroom	13'6" x 11'5"	133 sq. ft	Yes
14	Garage	35'11" x 33'6"	1014 sq. ft	No
15	Laundry	12'8" x 5'5"	68 sq. ft	Yes
16	Bedroom	13'6" x 12'0"	133 sq. ft	Yes
17	Kitchen	12'8" x 12'3"	162 sq. ft	Yes
18	Bath	10'5" x 11'3"	90 sq. ft	Yes
19	Bath	9'11" x 5'8"	56 sq. ft	Yes

2672 Green Spot Ln,Spearfish,SD,US

#	Room name	Dimensions	Area (sqft)	Counted as Living Area
20	Primary Bedroom	14'0" x 13'3"	185 sq. ft	Yes
21	Hall	3'3" x 5'8"	18 sq. ft	Yes

2672 Green Spot Ln, Spearfish, SD, US

1 Floor 1 - Hall



Dimensions: 3'10" x 6'7"
Area: 25 sq. ft
Counted as Living Area:
Yes

Heated: Yes
Finished: Yes
Enclosed: Yes
Contiguous:
Yes
Permitted: Yes
Wet Space: No
Addition: No
Conversion: No

2 Floor 1 - Bedroom

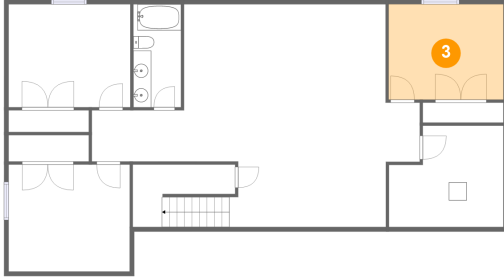


Dimensions: 13'6" x 11'11"
Area: 161 sq. ft
Counted as Living Area:
Yes

Heated: Yes
Finished: Yes
Enclosed: Yes
Contiguous:
Yes
Permitted: Yes
Wet Space: No
Addition: No
Conversion: No

2672 Green Spot Ln, Spearfish, SD, US

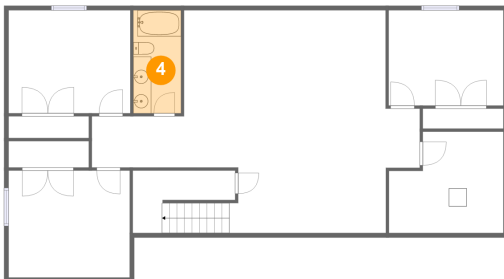
3 Floor 1 - Bedroom



Dimensions: 12'9" x 10'7"
Area: 136 sq. ft
Counted as Living Area:
Yes

Heated: Yes
Finished: Yes
Enclosed: Yes
Contiguous:
Yes
Permitted: Yes
Wet Space: No
Addition: No
Conversion: No

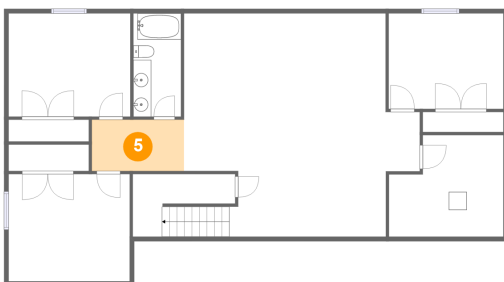
4 Floor 1 - Bath



Dimensions: 5'4" x 11'5"
Area: 61 sq. ft
Counted as Living Area:
Yes

Heated: Yes
Finished: Yes
Enclosed: Yes
Contiguous:
Yes
Permitted: Yes
Wet Space: Yes
Addition: No
Conversion: No

5 Floor 1 - Hall



Dimensions: 10'3" x 5'8"
Area: 59 sq. ft
Counted as Living Area:
Yes

Heated: Yes
Finished: Yes
Enclosed: Yes
Contiguous:
Yes
Permitted: Yes
Wet Space: No
Addition: No
Conversion: No

2672 Green Spot Ln, Spearfish, SD, US

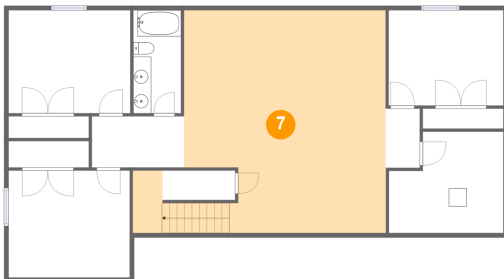
6 Floor 1 - Bedroom



Dimensions: 13'7" x 11'6"
Area: 155 sq. ft
Counted as Living Area:
Yes

Heated: Yes
Finished: Yes
Enclosed: Yes
Contiguous:
Yes
Permitted: Yes
Wet Space: No
Addition: No
Conversion: No

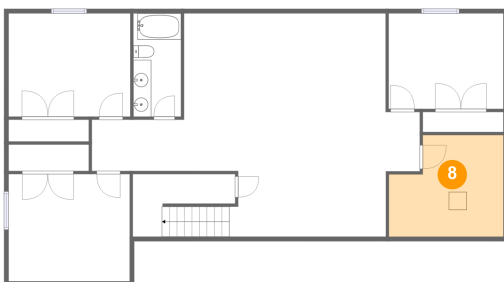
7 Floor 1 - Recreation Room



Dimensions: 22'6" x 24'9"
Area: 564 sq. ft
Counted as Living Area:
Yes

Heated: Yes
Finished: Yes
Enclosed: Yes
Contiguous:
Yes
Permitted: Yes
Wet Space: No
Addition: No
Conversion: No

8 Floor 1 - Storage



Dimensions: 12'9" x 11'3"
Area: 127 sq. ft
Counted as Living Area: No

Heated: No
Finished: No
Enclosed: No
Contiguous: Yes
Permitted: Yes
Wet Space: No
Addition: No
Conversion: No

2672 Green Spot Ln, Spearfish, SD, US

9 Floor 2 - Living Room



Dimensions: 14'3" x 17'6"
Area: 249 sq. ft
Counted as Living Area:
Yes

Heated: Yes
Finished: Yes
Enclosed: Yes
Contiguous:
Yes
Permitted: Yes
Wet Space: No
Addition: No
Conversion: No

10 Floor 2 - Dining Area



Dimensions: 12'8" x 9'5"
Area: 114 sq. ft
Counted as Living Area:
Yes

Heated: Yes
Finished: Yes
Enclosed: Yes
Contiguous:
Yes
Permitted: Yes
Wet Space: No
Addition: No
Conversion: No

11 Floor 2 - Foyer

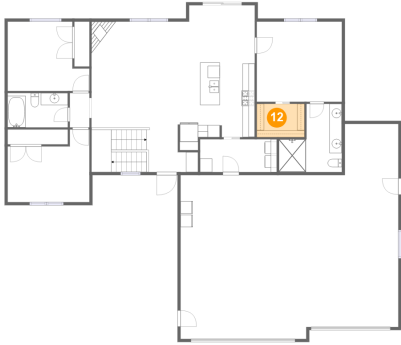


Dimensions: 8'2" x 7'4"
Area: 115 sq. ft
Counted as Living Area:
Yes

Heated: Yes
Finished: Yes
Enclosed: Yes
Contiguous:
Yes
Permitted: Yes
Wet Space: No
Addition: No
Conversion: No

2672 Green Spot Ln, Spearfish, SD, US

12 Floor 2 - W.i.c.



Dimensions: 7'10" x 5'6"
Area: 43 sq. ft
Counted as Living Area:
Yes

Heated: Yes
Finished: Yes
Enclosed: Yes
Contiguous:
Yes
Permitted: Yes
Wet Space: No
Addition: No
Conversion: No

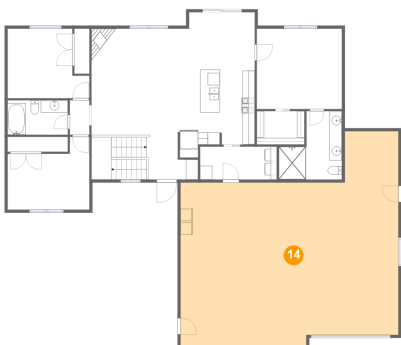
13 Floor 2 - Bedroom



Dimensions: 13'6" x 11'5"
Area: 133 sq. ft
Counted as Living Area:
Yes

Heated: Yes
Finished: Yes
Enclosed: Yes
Contiguous:
Yes
Permitted: Yes
Wet Space: No
Addition: No
Conversion: No

14 Floor 2 - Garage

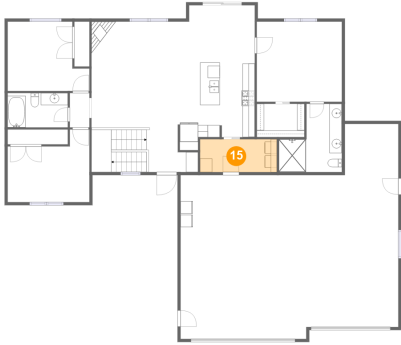


Dimensions: 35'11" x 33'6"
Area: 1014 sq. ft
Counted as Living Area: No

Heated: No
Finished: No
Enclosed: Yes
Contiguous: Yes
Permitted: Yes
Wet Space: No
Addition: No
Conversion: No

2672 Green Spot Ln, Spearfish, SD, US

15 Floor 2 - Laundry



Dimensions: 12'8" x 5'5"
Area: 68 sq. ft
Counted as Living Area:
Yes

Heated: Yes
Finished: Yes
Enclosed: Yes
Contiguous:
Yes
Permitted: Yes
Wet Space: No
Addition: No
Conversion: No

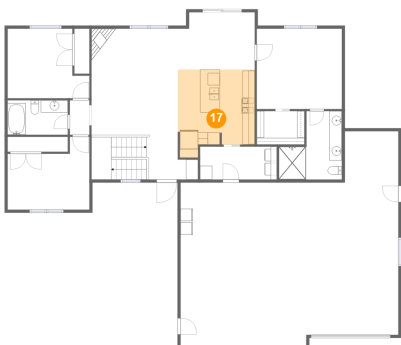
16 Floor 2 - Bedroom



Dimensions: 13'6" x 12'0"
Area: 133 sq. ft
Counted as Living Area:
Yes

Heated: Yes
Finished: Yes
Enclosed: Yes
Contiguous:
Yes
Permitted: Yes
Wet Space: No
Addition: No
Conversion: No

17 Floor 2 - Kitchen



Dimensions: 12'8" x 12'3"
Area: 162 sq. ft
Counted as Living Area:
Yes

Heated: Yes
Finished: Yes
Enclosed: Yes
Contiguous:
Yes
Permitted: Yes
Wet Space: No
Addition: No
Conversion: No

2672 Green Spot Ln, Spearfish, SD, US

18 Floor 2 - Bath



Dimensions: 10'5" x 11'3"
Area: 90 sq. ft
Counted as Living Area:
Yes

Heated: Yes
Finished: Yes
Enclosed: Yes
Contiguous:
Yes
Permitted: Yes
Wet Space: Yes
Addition: No
Conversion: No

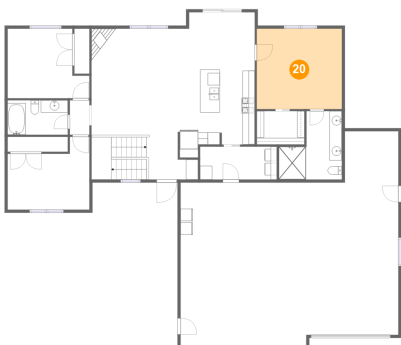
19 Floor 2 - Bath



Dimensions: 9'11" x 5'8"
Area: 56 sq. ft
Counted as Living Area:
Yes

Heated: Yes
Finished: Yes
Enclosed: Yes
Contiguous:
Yes
Permitted: Yes
Wet Space: Yes
Addition: No
Conversion: No

20 Floor 2 - Primary Bedroom



Dimensions: 14'0" x 13'3"
Area: 185 sq. ft
Counted as Living Area:
Yes

Heated: Yes
Finished: Yes
Enclosed: Yes
Contiguous:
Yes
Permitted: Yes
Wet Space: No
Addition: No
Conversion: No

2672 Green Spot Ln,Spearfish,SD,US

21 Floor 2 - Hall



Dimensions: 3'3" x 5'8"
Area: 18 sq. ft
Counted as Living Area:
Yes

Heated: Yes
Finished: Yes
Enclosed: Yes
Contiguous:
Yes
Permitted: Yes
Wet Space: No
Addition: No
Conversion: No