

2440 Guilford Avenue Southwest, Grandin Court, Roanoke, Roanoke, Virginia, United

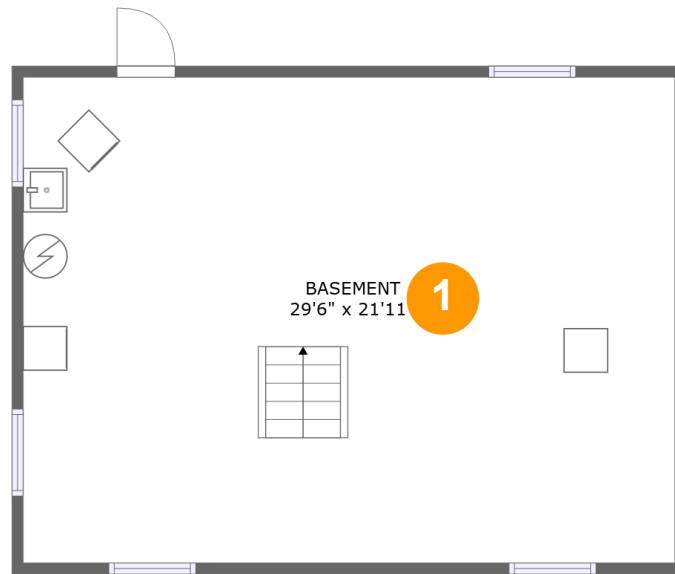


Property Summary

0 garages **3** bedrooms **1** bathrooms **1** half baths

3 floors **1,398** Gross Living Area sqft **2,350** total sqft

2440 Guilford Avenue Southwest, Grandin Court, Roanoke, Roanoke, Virginia, United



Room Dimensions

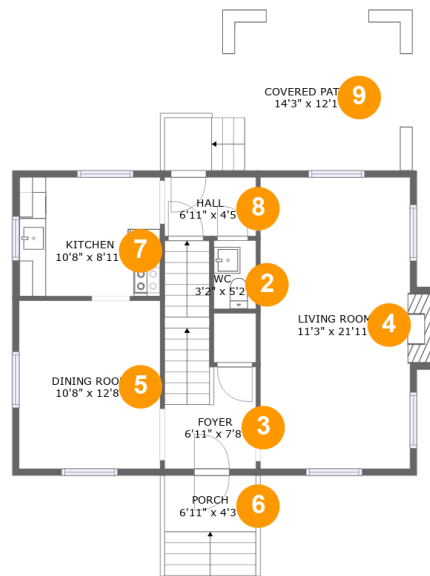
Floor 1

Total sqft: 699

Living area: 0

#	Room name	Dimensions	Area (sqft)	Counted as Living Area
1	Basement	29'6" x 21'11"	647 sq. ft	No

2440 Guilford Avenue Southwest, Grandin Court, Roanoke, Roanoke, Virginia, United



Room Dimensions

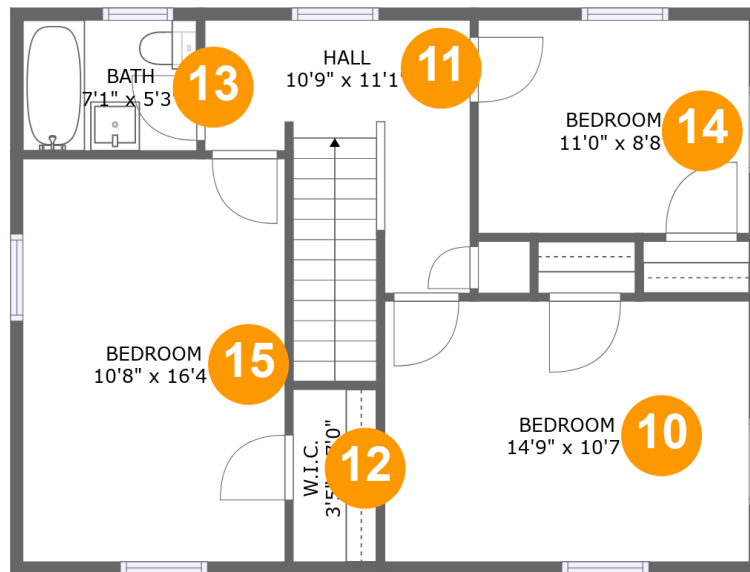
Floor 2

Total sqft: 952

Living area: 699

#	Room name	Dimensions	Area (sqft)	Counted as Living Area
2	Wc	3'2" x 5'2"	16 sq. ft	Yes
3	Foyer	6'11" x 7'8"	85 sq. ft	Yes
4	Living Room	11'3" x 21'11"	257 sq. ft	Yes
5	Dining Room	10'8" x 12'8"	135 sq. ft	Yes
6	Porch	6'11" x 4'3"	52 sq. ft	No
7	Kitchen	10'8" x 8'11"	95 sq. ft	Yes
8	Hall	6'11" x 4'5"	30 sq. ft	Yes
9	Covered Patio	14'3" x 12'1"	192 sq. ft	No

2440 Guilford Avenue Southwest, Grandin Court, Roanoke, Roanoke, Virginia, United



Room Dimensions

Floor 3

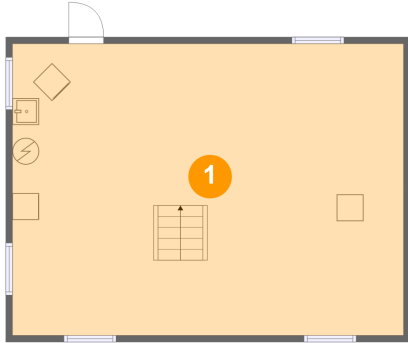
Total sqft: 699

Living area: 699

#	Room name	Dimensions	Area (sqft)	Counted as Living Area
10	Bedroom	14'9" x 10'7"	156 sq. ft	Yes
11	Hall	10'9" x 11'1"	109 sq. ft	Yes
12	W.i.c.	3'5" x 7'0"	24 sq. ft	Yes
13	Bath	7'1" x 5'3"	37 sq. ft	Yes
14	Bedroom	11'0" x 8'8"	95 sq. ft	Yes
15	Bedroom	10'8" x 16'4"	174 sq. ft	Yes

2440 Guilford Avenue Southwest, Grandin Court, Roanoke, Roanoke, Virginia, United

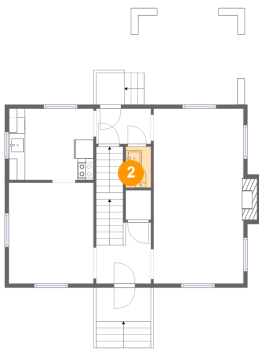
1 Floor 1 - Basement



Dimensions: 29'6" x 21'11"
Area: 647 sq. ft
Counted as Living Area: No

Heated: Yes
Finished: No
Enclosed: Yes
Contiguous: Yes
Permitted: Yes
Wet Space: No
Addition: No
Conversion: No

2 Floor 2 - Wc

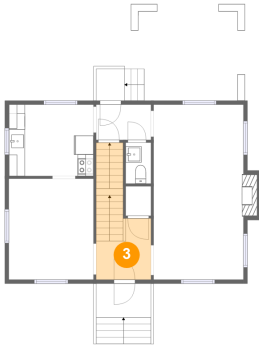


Dimensions: 3'2" x 5'2"
Area: 16 sq. ft
Counted as Living Area: Yes

Heated: Yes
Finished: Yes
Enclosed: Yes
Contiguous: Yes
Permitted: Yes
Wet Space: Yes
Addition: No
Conversion: No

2440 Guilford Avenue Southwest, Grandin Court, Roanoke, Roanoke, Virginia, United

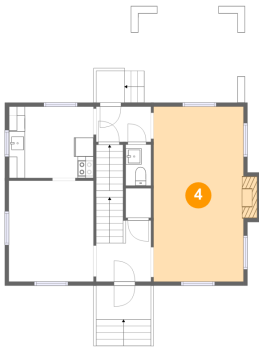
3 Floor 2 - Foyer



Dimensions: 6'11" x 7'8"
Area: 85 sq. ft
Counted as Living Area:
Yes

Heated: Yes
Finished: Yes
Enclosed: Yes
Contiguous:
Yes
Permitted: Yes
Wet Space: No
Addition: No
Conversion: No

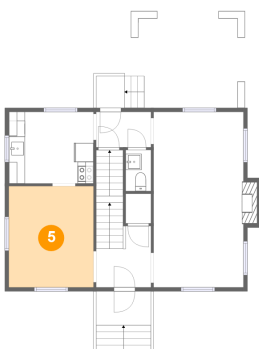
4 Floor 2 - Living Room



Dimensions: 11'3" x 21'11"
Area: 257 sq. ft
Counted as Living Area:
Yes

Heated: Yes
Finished: Yes
Enclosed: Yes
Contiguous:
Yes
Permitted: Yes
Wet Space: No
Addition: No
Conversion: No

5 Floor 2 - Dining Room

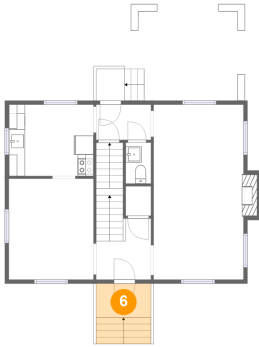


Dimensions: 10'8" x 12'8"
Area: 135 sq. ft
Counted as Living Area:
Yes

Heated: Yes
Finished: Yes
Enclosed: Yes
Contiguous:
Yes
Permitted: Yes
Wet Space: No
Addition: No
Conversion: No

2440 Guilford Avenue Southwest, Grandin Court, Roanoke, Roanoke, Virginia, United

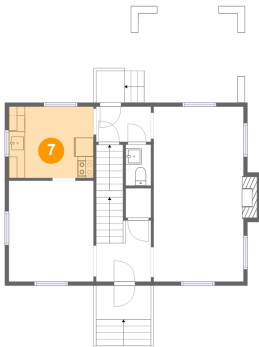
6 Floor 2 - Porch



Dimensions: 6'11" x 4'3"
Area: 52 sq. ft
Counted as Living Area: No

Heated: No
Finished: Yes
Enclosed: No
Contiguous: Yes
Permitted: Yes
Wet Space: No
Addition: No
Conversion: No

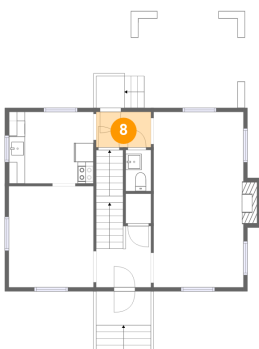
7 Floor 2 - Kitchen



Dimensions: 10'8" x 8'11"
Area: 95 sq. ft
Counted as Living Area: Yes

Heated: Yes
Finished: Yes
Enclosed: Yes
Contiguous: Yes
Permitted: Yes
Wet Space: No
Addition: No
Conversion: No

8 Floor 2 - Hall

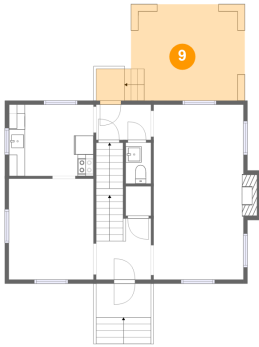


Dimensions: 6'11" x 4'5"
Area: 30 sq. ft
Counted as Living Area: Yes

Heated: Yes
Finished: Yes
Enclosed: Yes
Contiguous: Yes
Permitted: Yes
Wet Space: No
Addition: No
Conversion: No

2440 Guilford Avenue Southwest, Grandin Court, Roanoke, Roanoke, Virginia, United

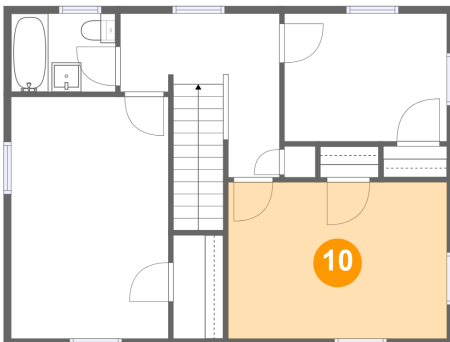
9 Floor 2 - Covered Patio



Dimensions: 14'3" x 12'1"
Area: 192 sq. ft
Counted as Living Area: No

Heated: No
Finished: Yes
Enclosed: No
Contiguous: Yes
Permitted: Yes
Wet Space: No
Addition: No
Conversion: No

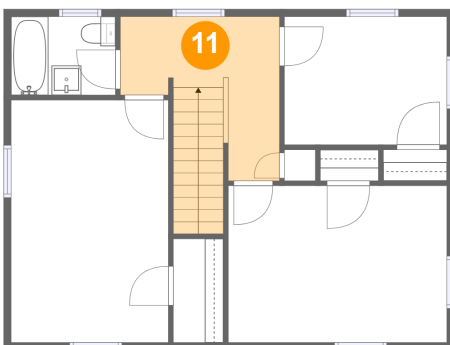
10 Floor 3 - Bedroom



Dimensions: 14'9" x 10'7"
Area: 156 sq. ft
Counted as Living Area: Yes

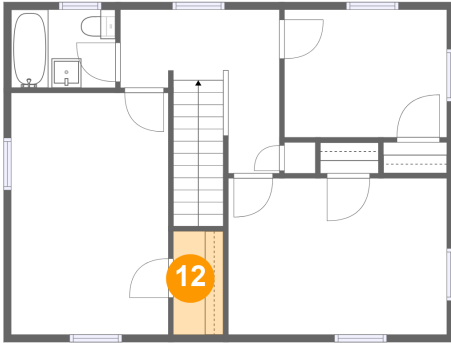
Heated: Yes
Finished: Yes
Enclosed: Yes
Contiguous: Yes
Permitted: Yes
Wet Space: No
Addition: No
Conversion: No

11 Floor 3 - Hall



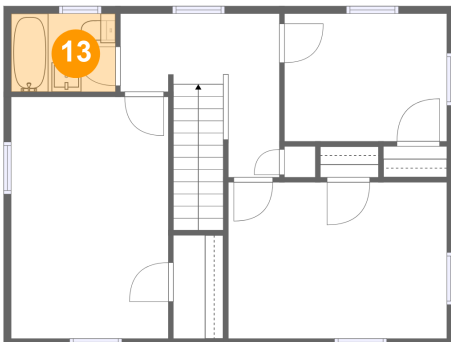
Dimensions: 10'9" x 11'1"
Area: 109 sq. ft
Counted as Living Area: Yes

Heated: Yes
Finished: Yes
Enclosed: Yes
Contiguous: Yes
Permitted: Yes
Wet Space: No
Addition: No
Conversion: No

2440 Guilford Avenue Southwest, Grandin Court, Roanoke, Roanoke, Virginia, United**12 Floor 3 - W.i.c.**

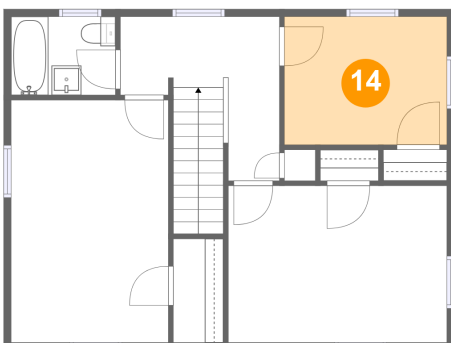
Dimensions: 3'5" x 7'0"
Area: 24 sq. ft
Counted as Living Area:
Yes

Heated: Yes
Finished: Yes
Enclosed: Yes
Contiguous:
Yes
Permitted: Yes
Wet Space: No
Addition: No
Conversion: No

13 Floor 3 - Bath

Dimensions: 7'1" x 5'3"
Area: 37 sq. ft
Counted as Living Area:
Yes

Heated: Yes
Finished: Yes
Enclosed: Yes
Contiguous:
Yes
Permitted: Yes
Wet Space: Yes
Addition: No
Conversion: No

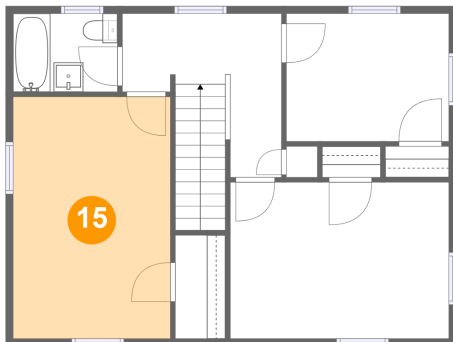
14 Floor 3 - Bedroom

Dimensions: 11'0" x 8'8"
Area: 95 sq. ft
Counted as Living Area:
Yes

Heated: Yes
Finished: Yes
Enclosed: Yes
Contiguous:
Yes
Permitted: Yes
Wet Space: No
Addition: No
Conversion: No

2440 Guilford Avenue Southwest, Grandin Court, Roanoke, Roanoke, Virginia, United

15 Floor 3 - Bedroom



Dimensions: 10'8" x 16'4"
Area: 174 sq. ft
Counted as Living Area:
Yes

Heated: Yes
Finished: Yes
Enclosed: Yes
Contiguous:
Yes
Permitted: Yes
Wet Space: No
Addition: No
Conversion: No