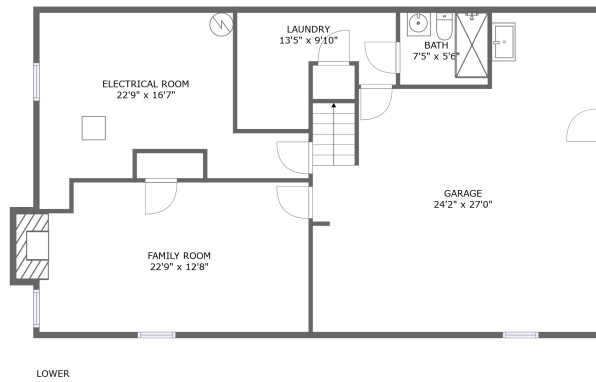
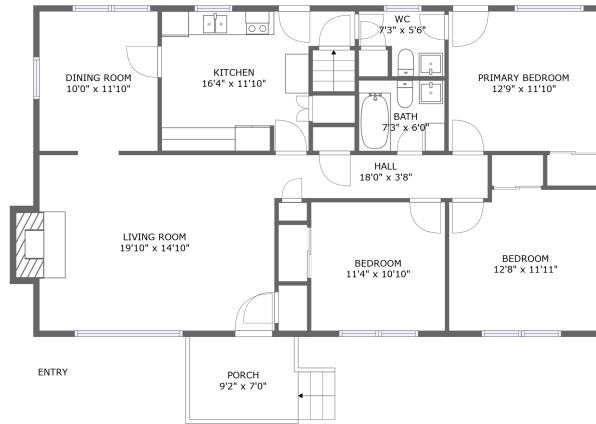


# 2722 Yellow Mountain Road Southeast, South Roanoke, Roanoke, Roanoke, Virginia, United




## Property Summary

 **1** garages

 **3** bedrooms

 **2** bathrooms

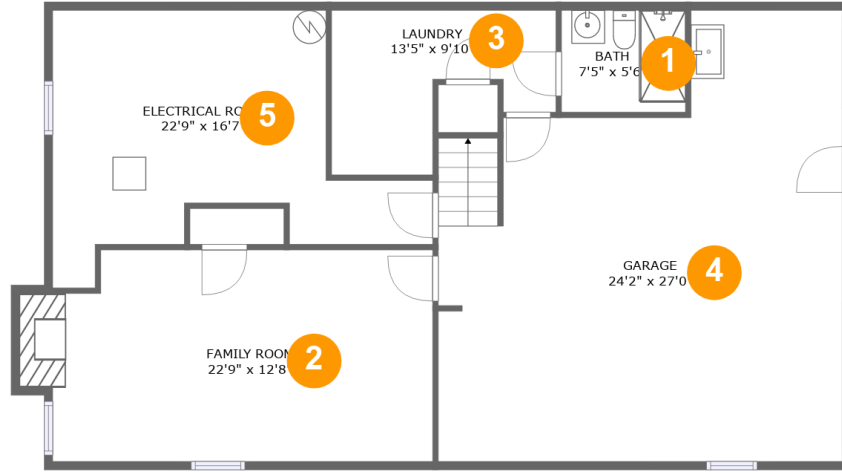
 **1** half baths

 **2** floors

 **1,525** Gross Living Area sqft

 **2,810** total sqft

# 2722 Yellow Mountain Road Southeast, South Roanoke, Roanoke, Roanoke, Virginia, United



## Room Dimensions

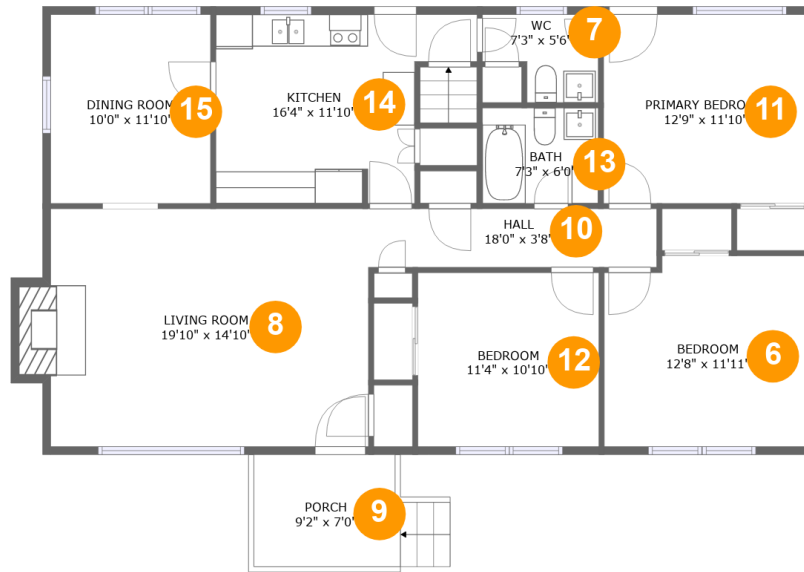
Floor 1

Total sqft: 1369

Living area: 181

#	Room name	Dimensions	Area (sqft)	Counted as Living Area
1	Bath	7'5" x 5'6"	45 sq. ft	Yes
2	Family Room	22'9" x 12'8"	292 sq. ft	No
3	Laundry	13'5" x 9'10"	96 sq. ft	Yes
4	Garage	24'2" x 27'0"	549 sq. ft	No
5	Electrical Room	22'9" x 16'7"	245 sq. ft	No

# 2722 Yellow Mountain Road Southeast, South Roanoke, Roanoke, Roanoke, Virginia, United



## Room Dimensions

Floor 2

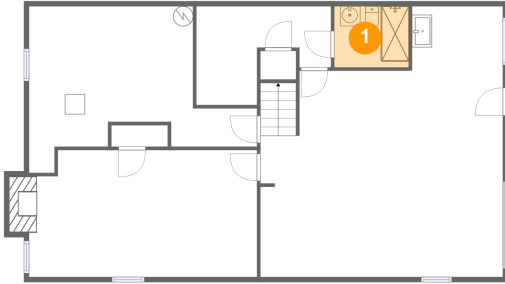
Total sqft: 1441

Living area: 1344

#	Room name	Dimensions	Area (sqft)	Counted as Living Area
6	Bedroom	12'8" x 11'11"	147 sq. ft	Yes
7	Wc	7'3" x 5'6"	33 sq. ft	Yes
8	Living Room	19'10" x 14'10"	306 sq. ft	Yes
9	Porch	9'2" x 7'0"	76 sq. ft	No
10	Hall	18'0" x 3'8"	66 sq. ft	Yes
11	Primary Bedroom	12'9" x 11'10"	150 sq. ft	Yes
12	Bedroom	11'4" x 10'10"	123 sq. ft	Yes
13	Bath	7'3" x 6'0"	43 sq. ft	Yes
14	Kitchen	16'4" x 11'10"	157 sq. ft	Yes
15	Dining Room	10'0" x 11'10"	118 sq. ft	Yes

# 2722 Yellow Mountain Road Southeast, South Roanoke, Roanoke, Roanoke, Virginia, United

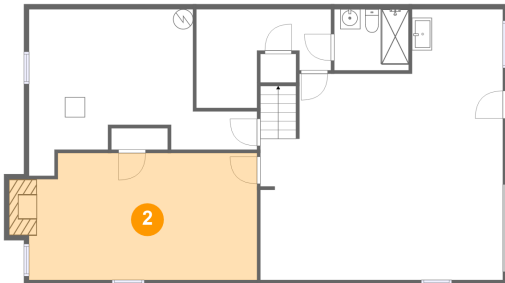
## 1 Floor 1 - Bath



Dimensions: 7'5" x 5'6"  
Area: 45 sq. ft  
Counted as Living Area:  
Yes

Heated: Yes  
Finished: Yes  
Enclosed: Yes  
Contiguous:  
Yes  
Permitted: Yes  
Wet Space: Yes  
Addition: No  
Conversion: No

## 2 Floor 1 - Family Room

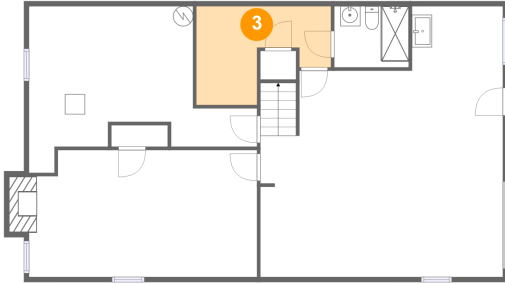


Dimensions: 22'9" x 12'8"  
Area: 292 sq. ft  
Counted as Living Area: No

Heated: Yes  
Finished: Yes  
Enclosed: Yes  
Contiguous: No  
Permitted: Yes  
Wet Space: No  
Addition: No  
Conversion: No

## 2722 Yellow Mountain Road Southeast, South Roanoke, Roanoke, Roanoke, Virginia, United

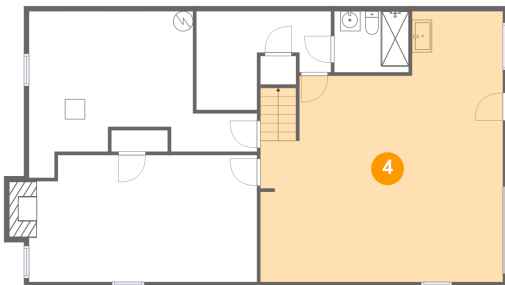
### 3 Floor 1 - Laundry



Dimensions: 13'5" x 9'10"  
Area: 96 sq. ft  
Counted as Living Area:  
Yes

Heated: Yes  
Finished: Yes  
Enclosed: Yes  
Contiguous:  
Yes  
Permitted: Yes  
Wet Space: No  
Addition: No  
Conversion: No

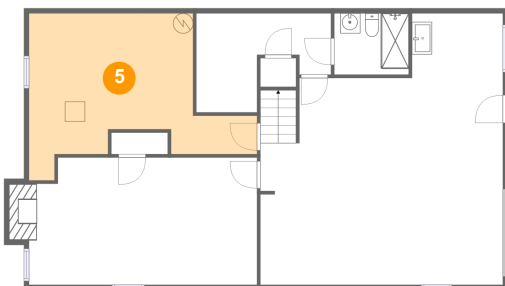
### 4 Floor 1 - Garage



Dimensions: 24'2" x 27'0"  
Area: 549 sq. ft  
Counted as Living Area: No

Heated: No  
Finished: No  
Enclosed: Yes  
Contiguous: Yes  
Permitted: Yes  
Wet Space: No  
Addition: No  
Conversion: No

### 5 Floor 1 - Electrical Room

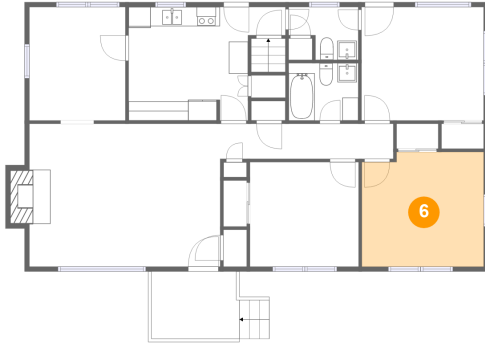


Dimensions: 22'9" x 16'7"  
Area: 245 sq. ft  
Counted as Living Area: No

Heated: No  
Finished: No  
Enclosed: Yes  
Contiguous: Yes  
Permitted: Yes  
Wet Space: No  
Addition: No  
Conversion: No

# 2722 Yellow Mountain Road Southeast, South Roanoke, Roanoke, Roanoke, Virginia, United

## 6 Floor 2 - Bedroom



Dimensions: 12'8" x 11'11"  
Area: 147 sq. ft  
Counted as Living Area:  
Yes

Heated: Yes  
Finished: Yes  
Enclosed: Yes  
Contiguous:  
Yes  
Permitted: Yes  
Wet Space: No  
Addition: No  
Conversion: No

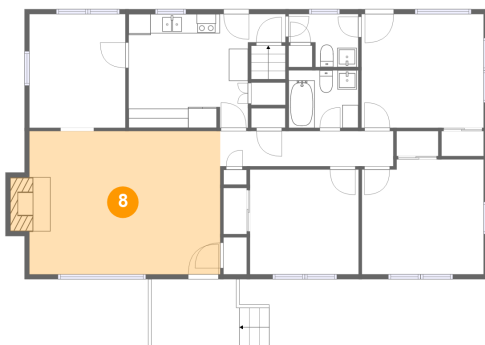
## 7 Floor 2 - Wc



Dimensions: 7'3" x 5'6"  
Area: 33 sq. ft  
Counted as Living Area:  
Yes

Heated: Yes  
Finished: Yes  
Enclosed: Yes  
Contiguous:  
Yes  
Permitted: Yes  
Wet Space: Yes  
Addition: No  
Conversion: No

## 8 Floor 2 - Living Room

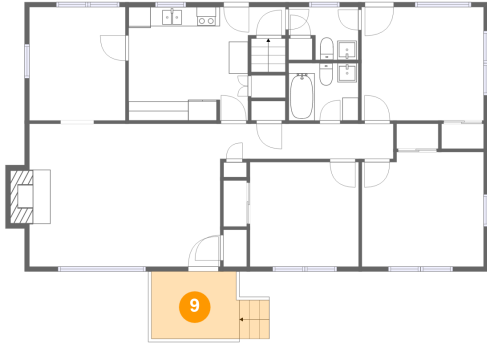


Dimensions: 19'10" x 14'10"  
Area: 306 sq. ft  
Counted as Living Area:  
Yes

Heated: Yes  
Finished: Yes  
Enclosed: Yes  
Contiguous:  
Yes  
Permitted: Yes  
Wet Space: No  
Addition: No  
Conversion: No

## 2722 Yellow Mountain Road Southeast, South Roanoke, Roanoke, Roanoke, Virginia, United

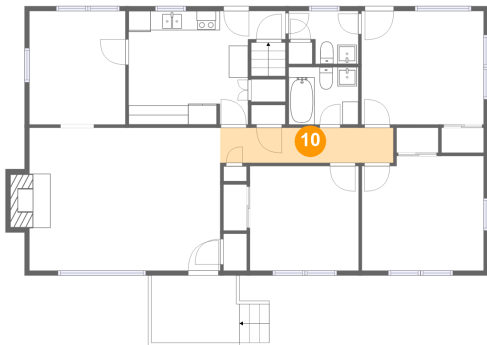
### 9 Floor 2 - Porch



Dimensions: 9'2" x 7'0"  
Area: 76 sq. ft  
Counted as Living Area: No

Heated: No  
Finished: Yes  
Enclosed: No  
Contiguous: Yes  
Permitted: Yes  
Wet Space: No  
Addition: No  
Conversion: No

### 10 Floor 2 - Hall



Dimensions: 18'0" x 3'8"  
Area: 66 sq. ft  
Counted as Living Area:  
Yes

Heated: Yes  
Finished: Yes  
Enclosed: Yes  
Contiguous:  
Yes  
Permitted: Yes  
Wet Space: No  
Addition: No  
Conversion: No

### 11 Floor 2 - Primary Bedroom



Dimensions: 12'9" x 11'10"  
Area: 150 sq. ft  
Counted as Living Area:  
Yes

Heated: Yes  
Finished: Yes  
Enclosed: Yes  
Contiguous:  
Yes  
Permitted: Yes  
Wet Space: No  
Addition: No  
Conversion: No

## 2722 Yellow Mountain Road Southeast, South Roanoke, Roanoke, Roanoke, Virginia, United

### 12 Floor 2 - Bedroom



Dimensions: 11'4" x 10'10"  
Area: 123 sq. ft  
Counted as Living Area:  
Yes

Heated: Yes  
Finished: Yes  
Enclosed: Yes  
Contiguous:  
Yes  
Permitted: Yes  
Wet Space: No  
Addition: No  
Conversion: No

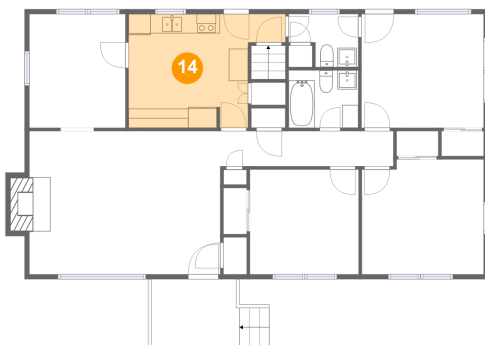
### 13 Floor 2 - Bath



Dimensions: 7'3" x 6'0"  
Area: 43 sq. ft  
Counted as Living Area:  
Yes

Heated: Yes  
Finished: Yes  
Enclosed: Yes  
Contiguous:  
Yes  
Permitted: Yes  
Wet Space: Yes  
Addition: No  
Conversion: No

### 14 Floor 2 - Kitchen



Dimensions: 16'4" x 11'10"  
Area: 157 sq. ft  
Counted as Living Area:  
Yes

Heated: Yes  
Finished: Yes  
Enclosed: Yes  
Contiguous:  
Yes  
Permitted: Yes  
Wet Space: No  
Addition: No  
Conversion: No



## 2722 Yellow Mountain Road Southeast, South Roanoke, Roanoke, Roanoke, Virginia, United

### 15 Floor 2 - Dining Room



**Dimensions:** 10'0" x 11'10"  
**Area:** 118 sq. ft  
**Counted as Living Area:**  
Yes

**Heated:** Yes  
**Finished:** Yes  
**Enclosed:** Yes  
**Contiguous:**  
Yes  
**Permitted:** Yes  
**Wet Space:** No  
**Addition:** No  
**Conversion:** No