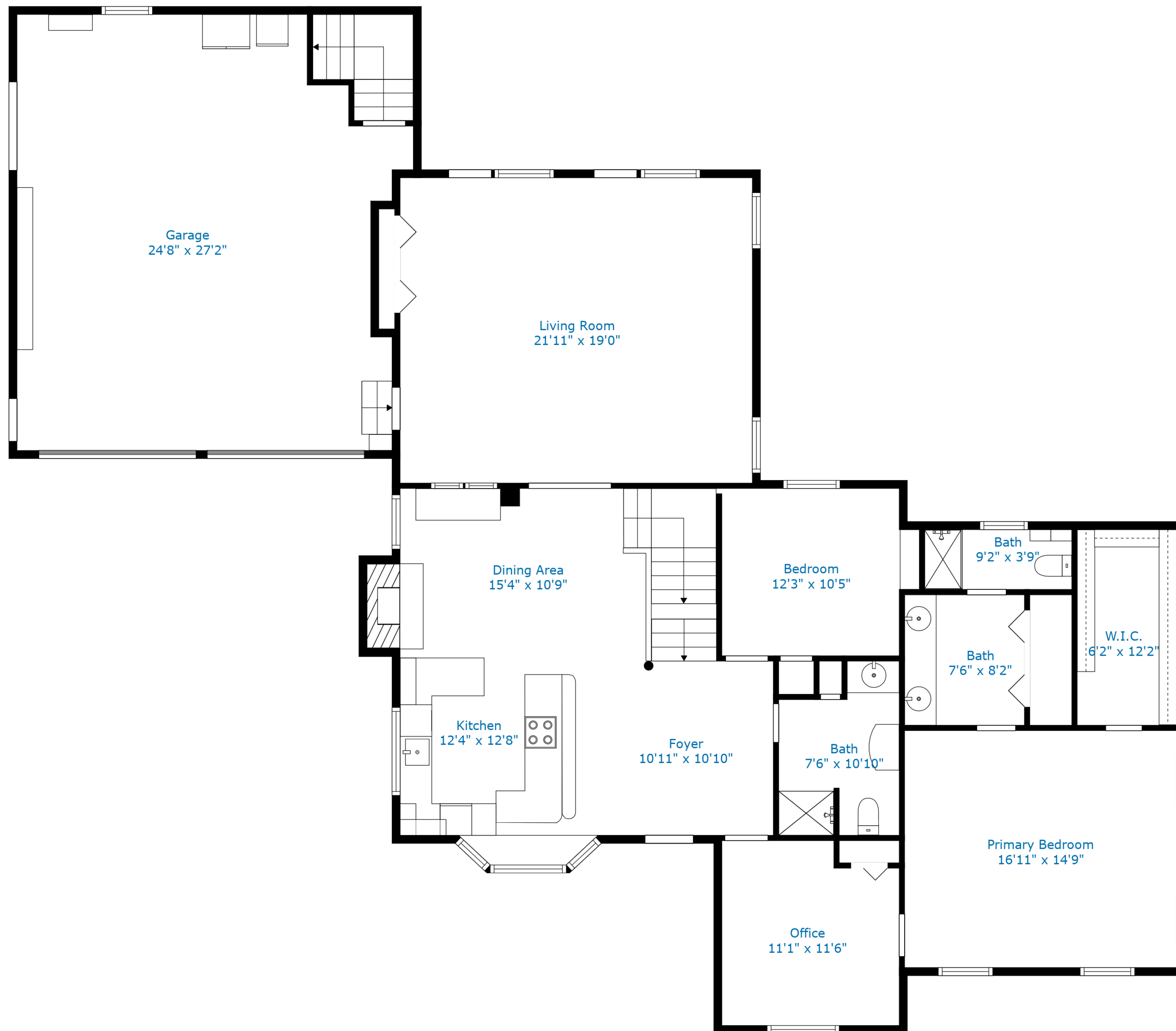


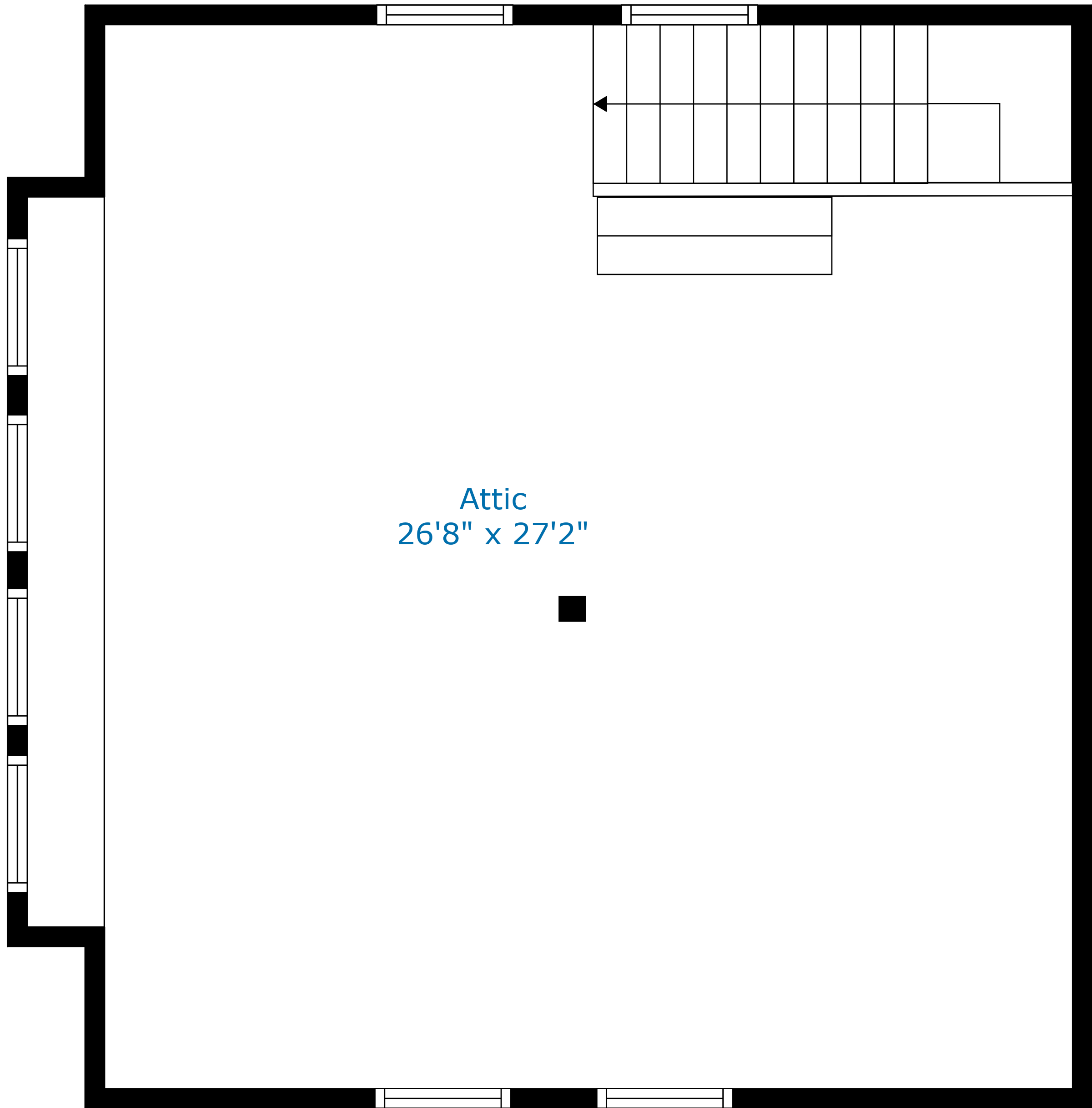
TOTAL: 3108 sq. ft

BELOW GROUND: 701 sq. ft, FLOOR 2: 1762 sq. ft, FLOOR 3: 0 sq. ft, FLOOR 4: 645 sq. ft
 EXCLUDED AREAS: STORAGE: 102 sq. ft, GARAGE: 597 sq. ft, FIREPLACE: 13 sq. ft,
 LOW CEILING: 201 sq. ft, ATTIC: 567 sq. ft, OPEN TO BELOW: 322 sq. ft
 WALLS: 361 sq. ft



TOTAL: 3108 sq. ft

BELOW GROUND: 701 sq. ft, FLOOR 2: 1762 sq. ft, FLOOR 3: 0 sq. ft, FLOOR 4: 645 sq. ft
 EXCLUDED AREAS: STORAGE: 102 sq. ft, GARAGE: 597 sq. ft, FIREPLACE: 13 sq. ft,
 LOW CEILING: 201 sq. ft, ATTIC: 567 sq. ft, OPEN TO BELOW: 322 sq. ft
 WALLS: 361 sq. ft



Attic
26'8" x 27'2"



TOTAL: 3108 sq. ft
BELOW GROUND: 701 sq. ft, FLOOR 2: 1762 sq. ft, FLOOR 3: 0 sq. ft, FLOOR 4: 645 sq. ft
EXCLUDED AREAS: STORAGE: 102 sq. ft, GARAGE: 597 sq. ft, FIREPLACE: 13 sq. ft,
LOW CEILING: 201 sq. ft, ATTIC: 567 sq. ft, OPEN TO BELOW: 322 sq. ft
WALLS: 361 sq. ft

Measurements Are Deemed Highly Accurate But Can't Be Guaranteed To Be Exact.

Open To Below

Sitting Room
16'0" x 19'1"

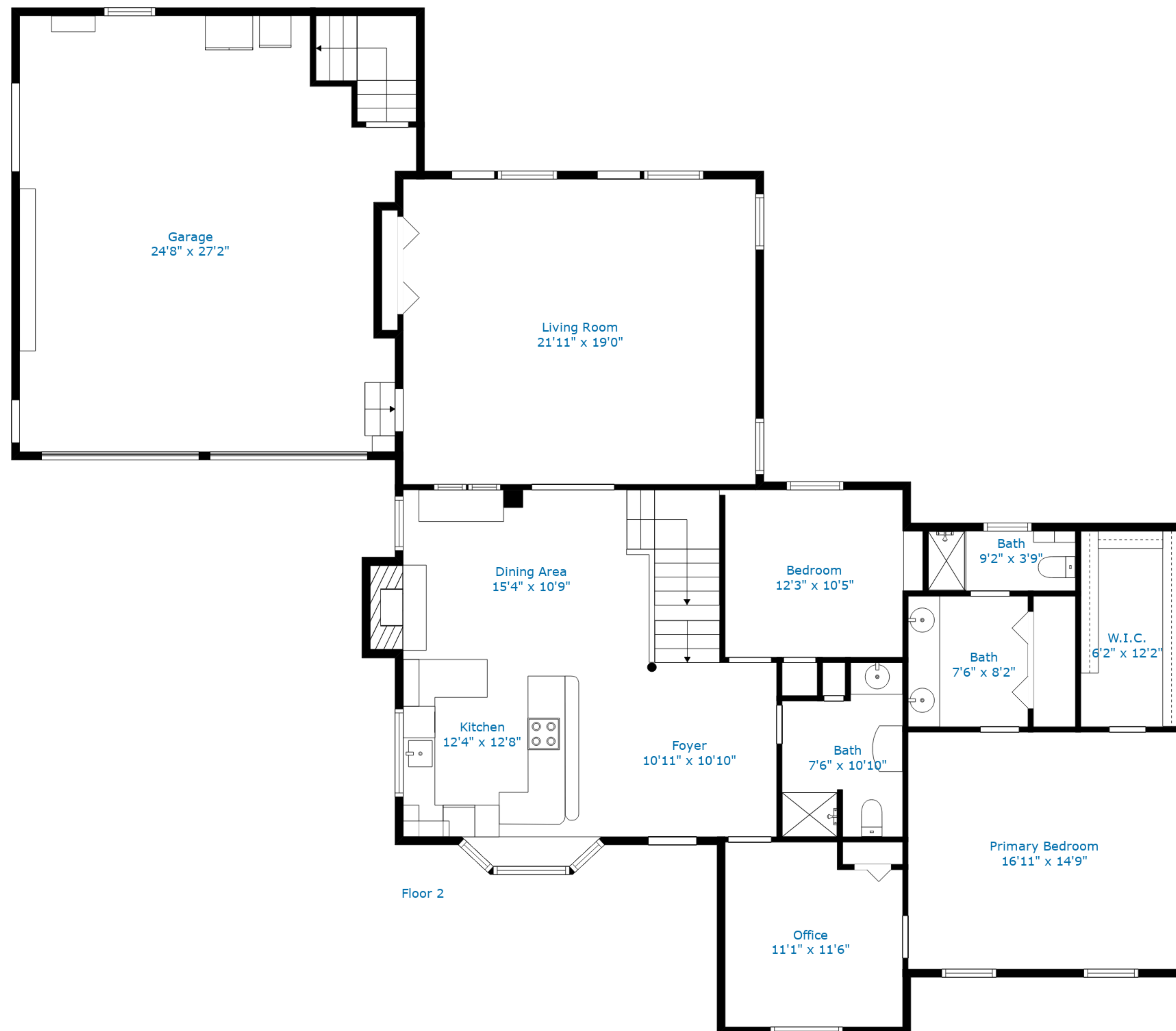
Hall
8'6" x 3'8"

Bath
6'11" x 2'6"

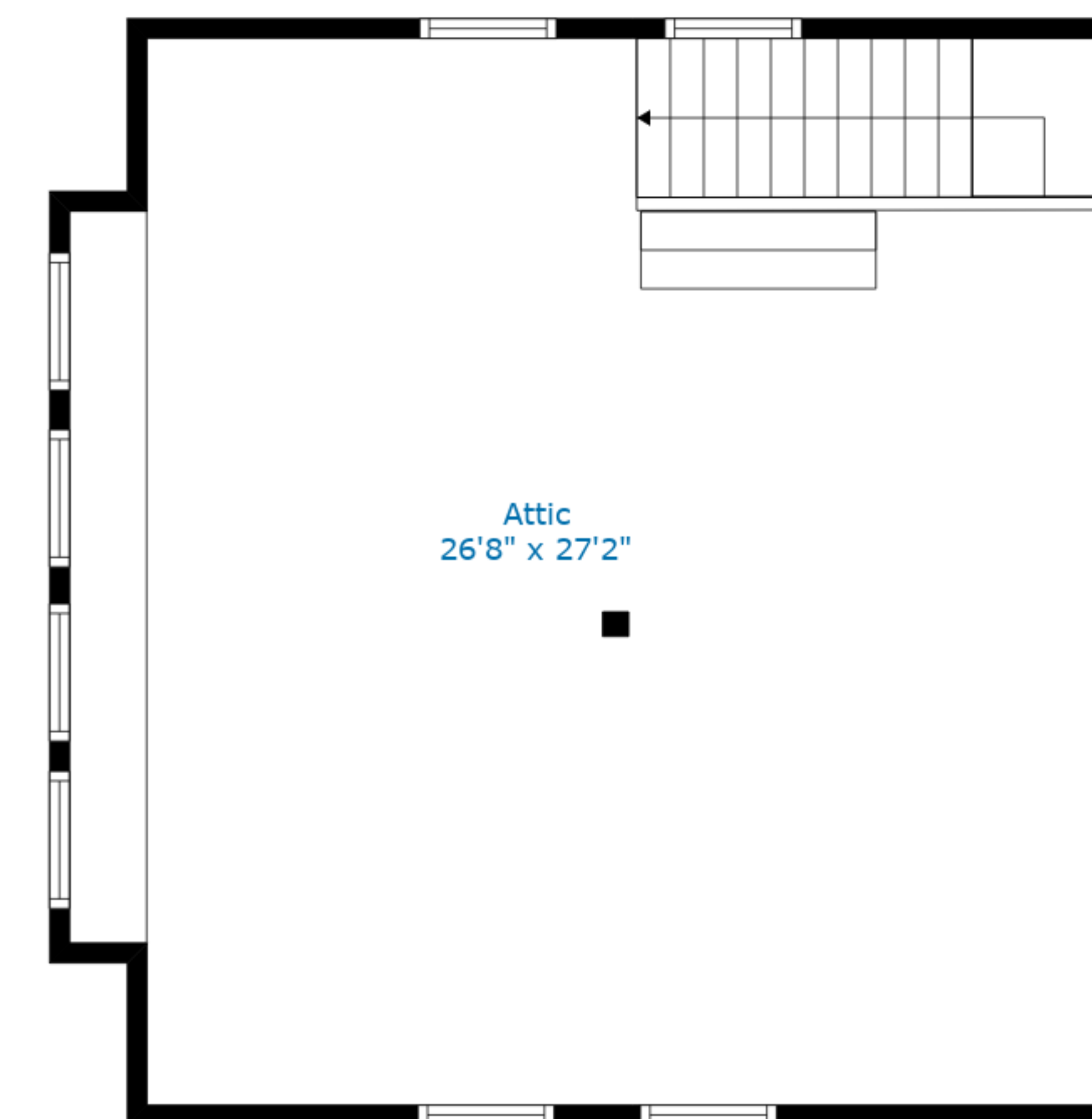
Bath
9'5" x 3'0"

W.I.C.
5'1" x 9'10"

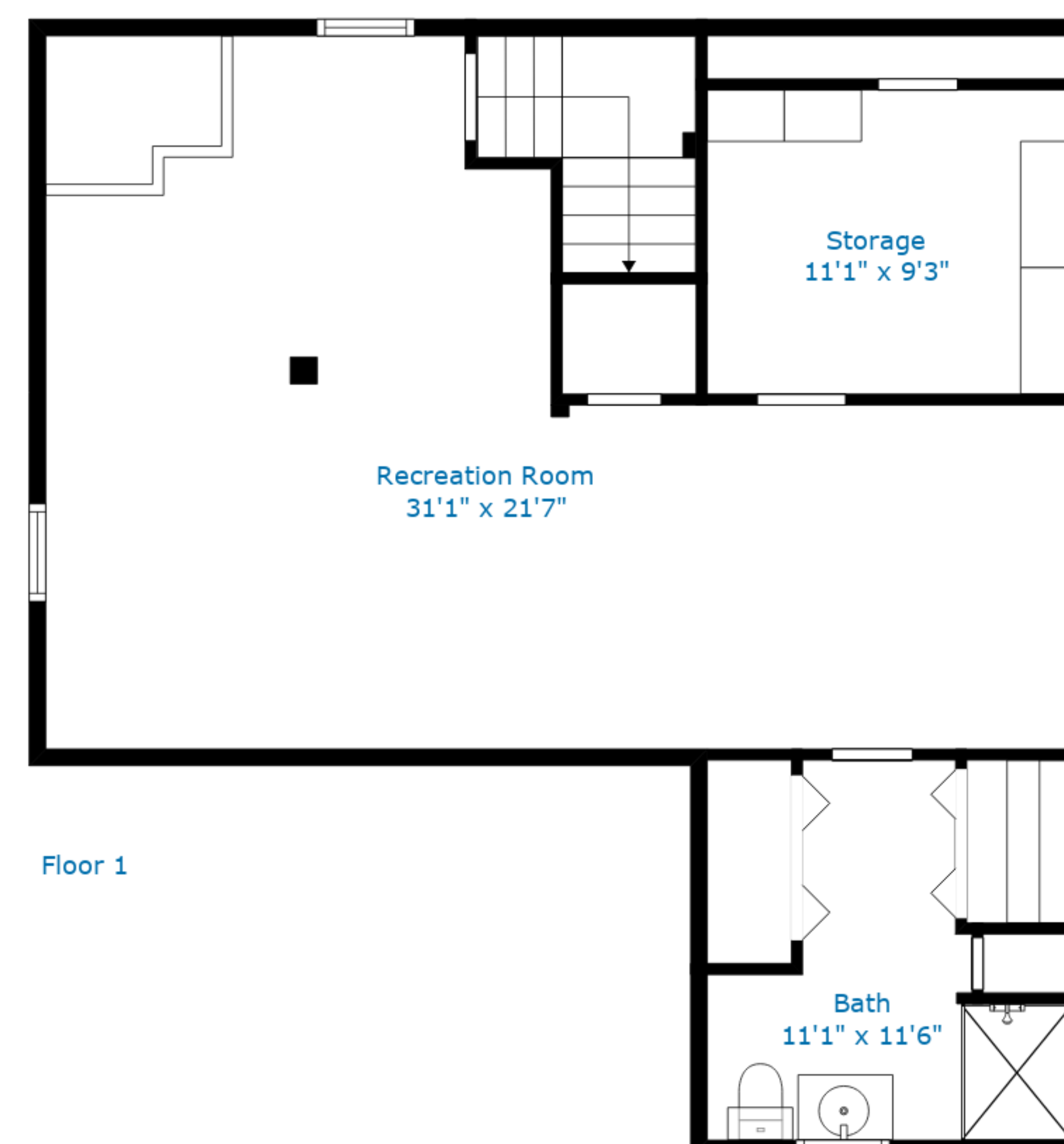
Bedroom
13'3" x 17'6"



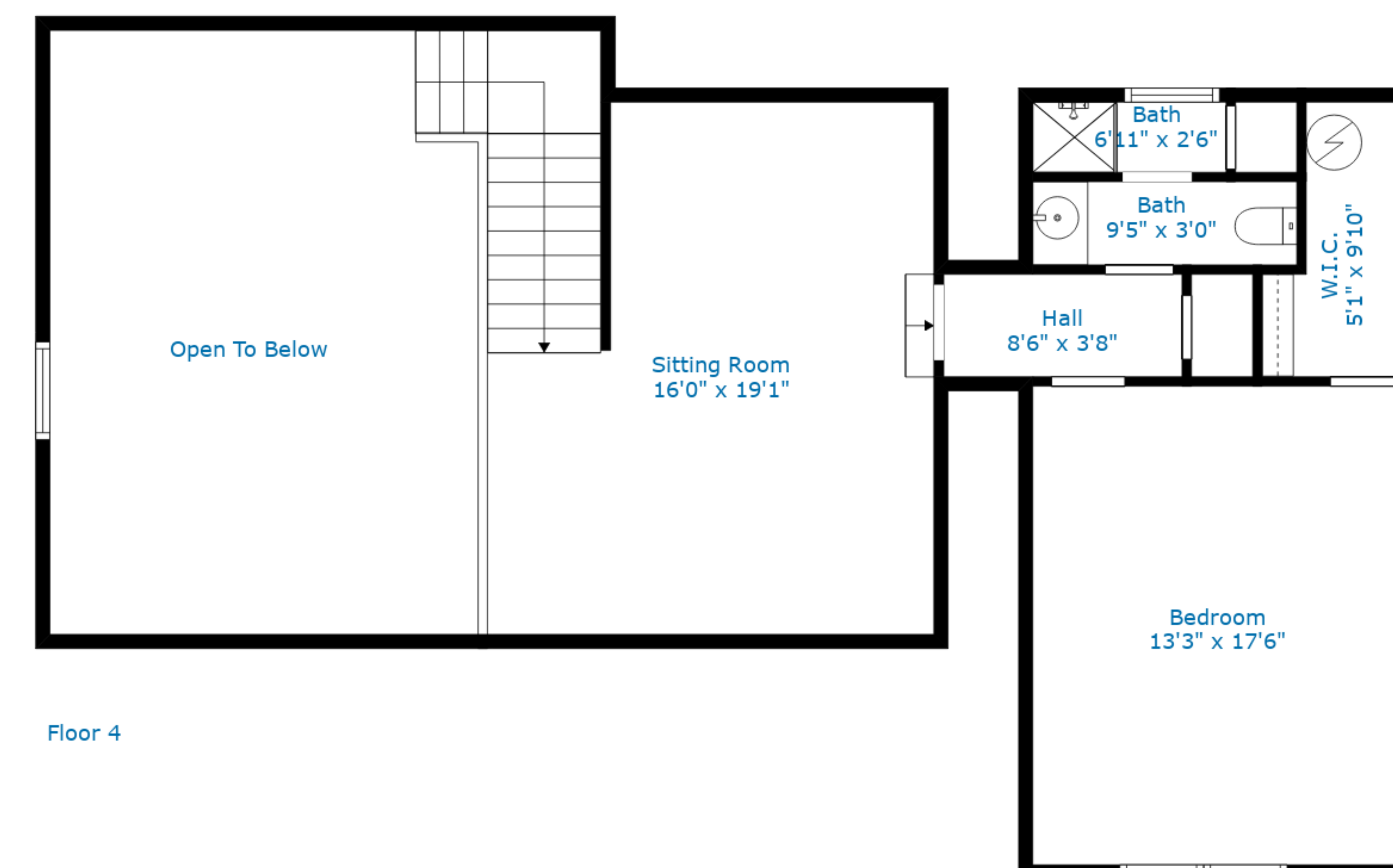
Floor 2



Floor 3



Floor 1



Floor 4

TOTAL: 3108 sq. ft

BELOW GROUND: 701 sq. ft, FLOOR 2: 1762 sq. ft, FLOOR 3: 0 sq. ft, FLOOR 4: 645 sq. ft
 EXCLUDED AREAS: STORAGE: 102 sq. ft, GARAGE: 597 sq. ft, FIREPLACE: 13 sq. ft,
 LOW CEILING: 201 sq. ft, ATTIC: 567 sq. ft, OPEN TO BELOW: 322 sq. ft
 WALLS: 361 sq. ft