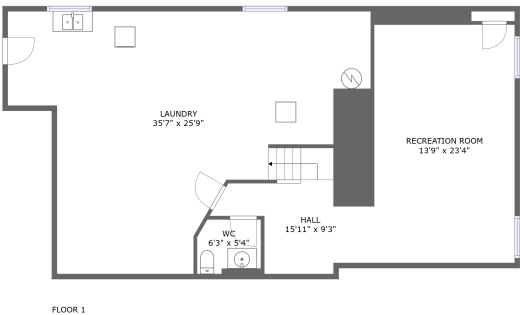
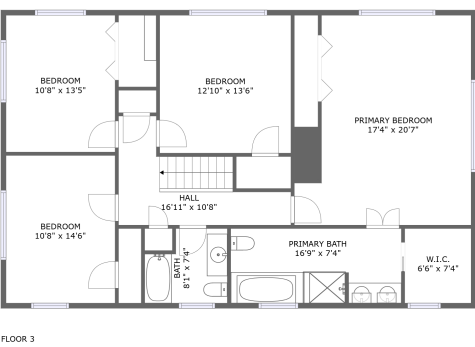
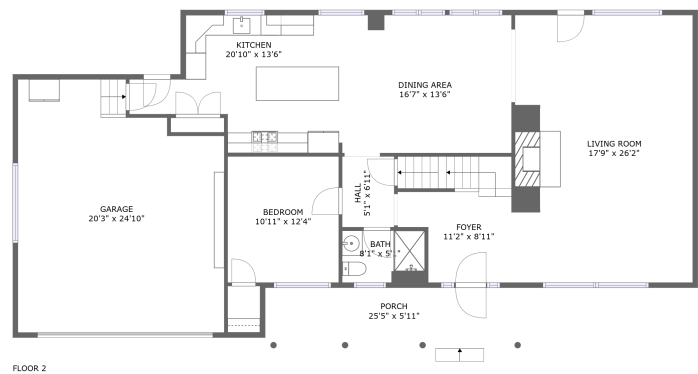


Home report

2865 South Jefferson Street, South Roanoke, Roanoke,  
Roanoke city, Virginia, United States, 24014



**Total GLA: 2720 sq. ft**

Below Ground: 1256 sq. ft, Floor 2: 1360 sq. ft, Floor 3: 1360 sq. ft

Excluded: Porch 151 sq. ft, Garage 484 sq. ft

Property summary

 **3** Floors

 **5** Bedrooms

 **3** Bathrooms

Home report

**2865 South Jefferson Street, South Roanoke, Roanoke,  
Roanoke city, Virginia, United States, 24014**



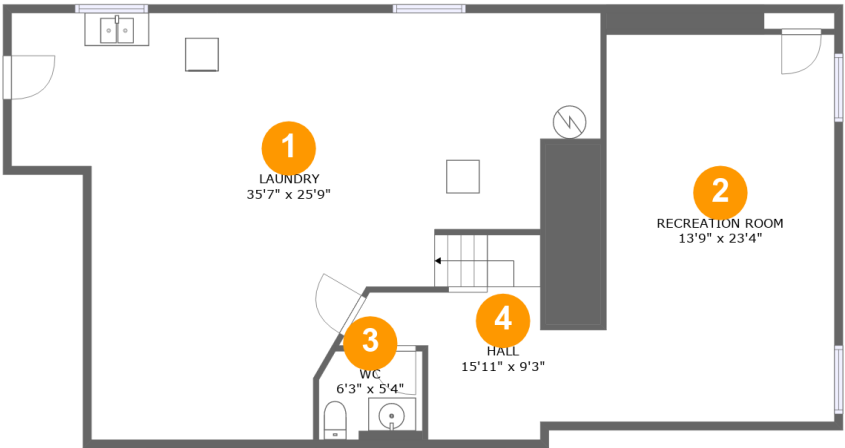
**1**  
Half baths



**1**  
Garages

Home report

2865 South Jefferson Street, South Roanoke, Roanoke,  
Roanoke city, Virginia, United States, 24014



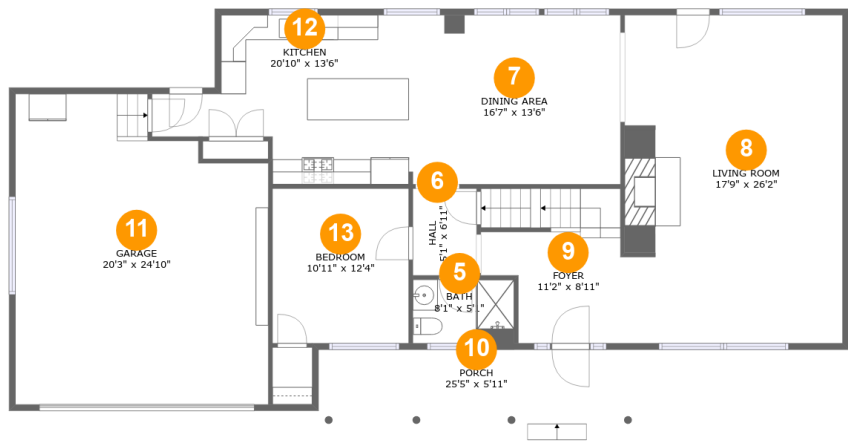
Room dimensions

Floor 1 Below ground Total:1256sqft Excluded: 0sqft

#		Max Dimensions	sqft	Included
1	Laundry	35'7" x 25'9"	630 sq. ft	Yes
2	Recreation Room	13'9" x 23'4"	322 sq. ft	Yes
3	WC	6'3" x 5'4"	33 sq. ft	Yes
4	Hall	15'11" x 9'3"	119 sq. ft	Yes

Home report

2865 South Jefferson Street, South Roanoke, Roanoke,  
Roanoke city, Virginia, United States, 24014



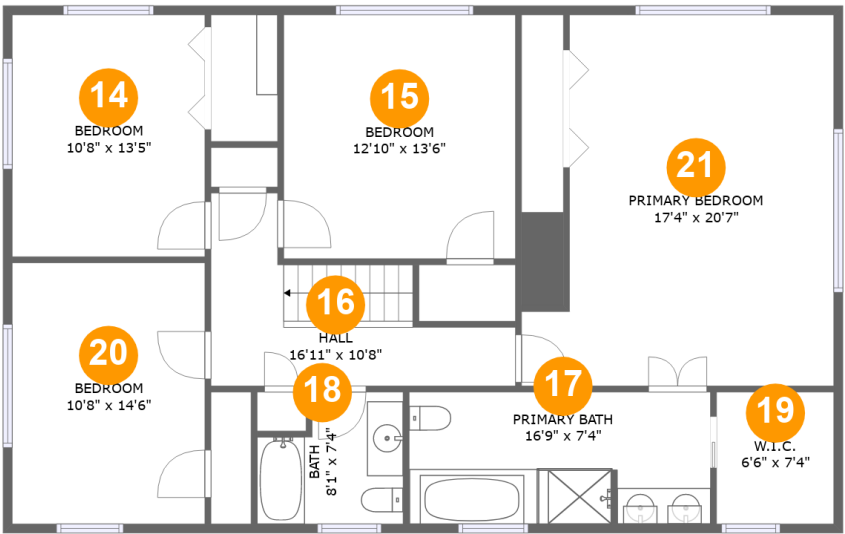
Room dimensions

Floor 2 Total:1360sqft    Excluded: 635sqft

#		Max Dimensions	sqft	Included
5	Bath	8'1" x 5'1"	41 sq. ft	Yes
6	Hall	5'1" x 6'11"	35 sq. ft	Yes
7	Dining Area	16'7" x 13'6"	224 sq. ft	Yes
8	Living Room	17'9" x 26'2"	457 sq. ft	Yes
9	Foyer	11'2" x 8'11"	120 sq. ft	Yes
10	Porch	25'5" x 5'11"	151 sq. ft	No
11	Garage	20'3" x 24'10"	455 sq. ft	No
12	Kitchen	20'10" x 13'6"	210 sq. ft	Yes
13	Bedroom	10'11" x 12'4"	135 sq. ft	Yes

Home report

2865 South Jefferson Street, South Roanoke, Roanoke,  
Roanoke city, Virginia, United States, 24014



Room dimensions

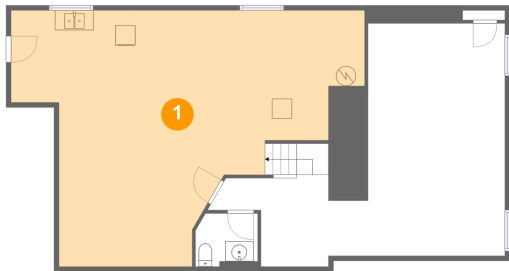
Floor 3 Total:1360sqft   Excluded: 0sqft

#		Max Dimensions	sqft	Included
14	Bedroom	10'8" x 13'5"	143 sq. ft	Yes
15	Bedroom	12'10" x 13'6"	174 sq. ft	Yes
16	Hall	16'11" x 10'8"	108 sq. ft	Yes
17	Primary Bath	16'9" x 7'4"	121 sq. ft	Yes
18	Bath	8'1" x 7'4"	52 sq. ft	Yes
19	W.I.C.	6'6" x 7'4"	48 sq. ft	Yes
20	Bedroom	10'8" x 14'6"	155 sq. ft	Yes
21	Primary Bedroom	17'4" x 20'7"	313 sq. ft	Yes

Home report

2865 South Jefferson Street, South Roanoke, Roanoke,  
Roanoke city, Virginia, United States, 24014

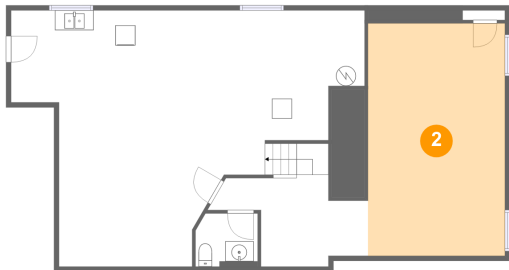
1 Floor 1 - Laundry



Max Dimensions: 35'7" x 25'9"  
Calculated Area: 630 sq. ft  
Included: Yes

Heated: Yes  
Finished: Yes  
Enclosed: Yes  
Contiguous: Yes  
Permitted: Yes  
Wet space: No  
Addition: No  
Conversion: No

2 Floor 1 - Recreation Room



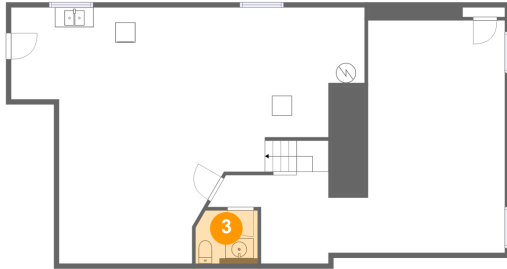
Max Dimensions: 13'9" x 23'4"  
Calculated Area: 322 sq. ft  
Included: Yes

Heated: Yes  
Finished: Yes  
Enclosed: Yes  
Contiguous: Yes  
Permitted: Yes  
Wet space: No  
Addition: No  
Conversion: No

## Home report

2865 South Jefferson Street, South Roanoke, Roanoke,  
Roanoke city, Virginia, United States, 24014

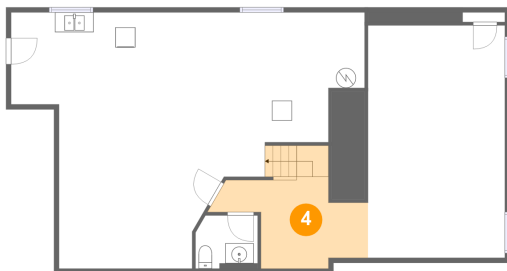
### 3 Floor 1 - WC



Max Dimensions: 6'3" x 5'4"  
Calculated Area: 33 sq. ft  
Included: Yes

Heated: Yes  
Finished: Yes  
Enclosed: Yes  
Contiguous: Yes  
Permitted: Yes  
Wet space: Yes  
Addition: No  
Conversion: No

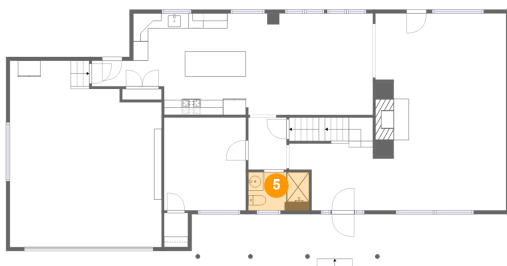
### 4 Floor 1 - Hall



Max Dimensions: 15'11" x 9'3"  
Calculated Area: 119 sq. ft  
Included: Yes

Heated: Yes  
Finished: Yes  
Enclosed: Yes  
Contiguous: Yes  
Permitted: Yes  
Wet space: No  
Addition: No  
Conversion: No

### 5 Floor 2 - Bath

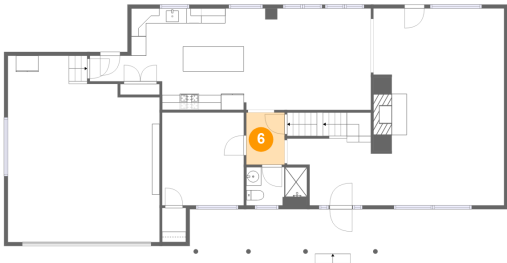


Max Dimensions: 8'1" x 5'1"  
Calculated Area: 41 sq. ft  
Included: Yes

Heated: Yes  
Finished: Yes  
Enclosed: Yes  
Contiguous: Yes  
Permitted: Yes  
Wet space: Yes  
Addition: No  
Conversion: No

2865 South Jefferson Street, South Roanoke, Roanoke,  
Roanoke city, Virginia, United States, 24014

6 Floor 2 - Hall



Max Dimensions: 5'1" x 6'11"  
Calculated Area: 35 sq. ft  
Included: Yes

Heated: Yes  
Finished: Yes  
Enclosed: Yes  
Contiguous: Yes  
Permitted: Yes  
Wet space: No  
Addition: No  
Conversion: No

7 Floor 2 - Dining Area



Max Dimensions: 16'7" x 13'6"  
Calculated Area: 224 sq. ft  
Included: Yes

Heated: Yes  
Finished: Yes  
Enclosed: Yes  
Contiguous: Yes  
Permitted: Yes  
Wet space: No  
Addition: No  
Conversion: No

8 Floor 2 - Living Room



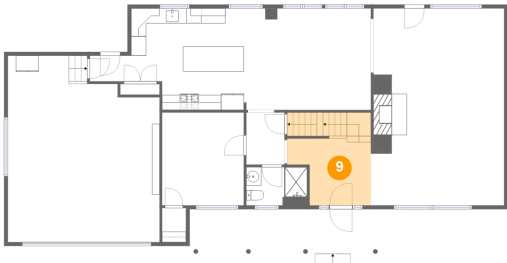
Max Dimensions: 17'9" x 26'2"  
Calculated Area: 457 sq. ft  
Included: Yes

Heated: Yes  
Finished: Yes  
Enclosed: Yes  
Contiguous: Yes  
Permitted: Yes  
Wet space: No  
Addition: No  
Conversion: No



2865 South Jefferson Street, South Roanoke, Roanoke,  
Roanoke city, Virginia, United States, 24014

9 Floor 2 - Foyer



Max Dimensions: 11'2" x 8'11"  
Calculated Area: 120 sq. ft  
Included: Yes

Heated: Yes  
Finished: Yes  
Enclosed: Yes  
Contiguous: Yes  
Permitted: Yes  
Wet space: No  
Addition: No  
Conversion: No

10 Floor 2 - Porch



Max Dimensions: 25'5" x 5'11"  
Calculated Area: 151 sq. ft  
Included: No

Heated: No  
Finished: Yes  
Enclosed: No  
Contiguous: Yes  
Permitted: Yes  
Wet space: No  
Addition: No  
Conversion: No

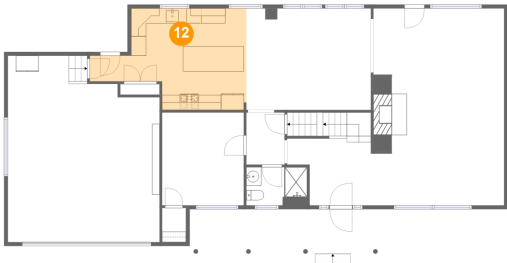
11 Floor 2 - Garage



Max Dimensions: 20'3" x 24'10"  
Calculated Area: 455 sq. ft  
Included: No

Heated: No  
Finished: No  
Enclosed: Yes  
Contiguous: Yes  
Permitted: Yes  
Wet space: No  
Addition: No  
Conversion: No

12 Floor 2 - Kitchen



Max Dimensions: 20'10" x 13'6"  
Calculated Area: 210 sq. ft  
Included: Yes

Heated: Yes  
Finished: Yes  
Enclosed: Yes  
Contiguous: Yes  
Permitted: Yes  
Wet space: No  
Addition: No  
Conversion: No

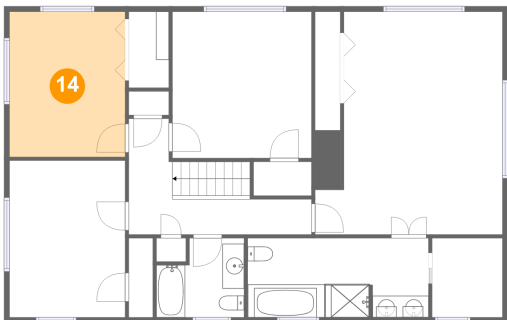
13 Floor 2 - Bedroom



Max Dimensions: 10'11" x 12'4"  
Calculated Area: 135 sq. ft  
Included: Yes

Heated: Yes  
Finished: Yes  
Enclosed: Yes  
Contiguous: Yes  
Permitted: Yes  
Wet space: No  
Addition: No  
Conversion: No

14 Floor 3 - Bedroom



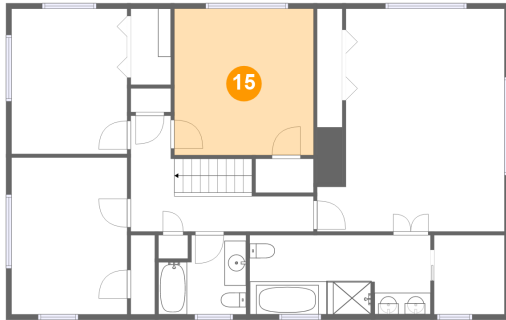
Max Dimensions: 10'8" x 13'5"  
Calculated Area: 143 sq. ft  
Included: Yes

Heated: Yes  
Finished: Yes  
Enclosed: Yes  
Contiguous: Yes  
Permitted: Yes  
Wet space: No  
Addition: No  
Conversion: No

## Home report

2865 South Jefferson Street, South Roanoke, Roanoke,  
Roanoke city, Virginia, United States, 24014

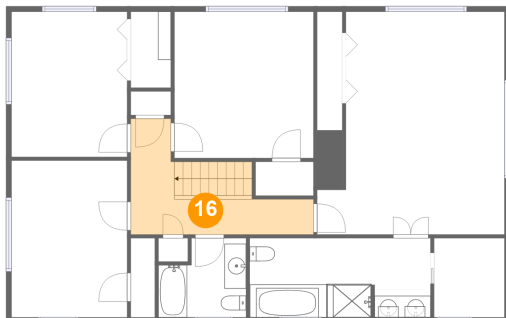
### 15 Floor 3 - Bedroom



Max Dimensions: 12'10" x 13'6"  
Calculated Area: 174 sq. ft  
Included: Yes

Heated: Yes  
Finished: Yes  
Enclosed: Yes  
Contiguous: Yes  
Permitted: Yes  
Wet space: No  
Addition: No  
Conversion: No

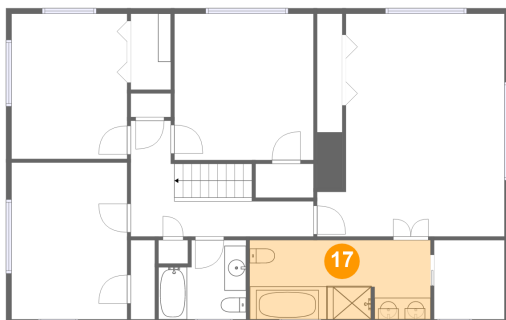
### 16 Floor 3 - Hall



Max Dimensions: 16'11" x 10'8"  
Calculated Area: 108 sq. ft  
Included: Yes

Heated: Yes  
Finished: Yes  
Enclosed: Yes  
Contiguous: Yes  
Permitted: Yes  
Wet space: No  
Addition: No  
Conversion: No

### 17 Floor 3 - Primary Bath



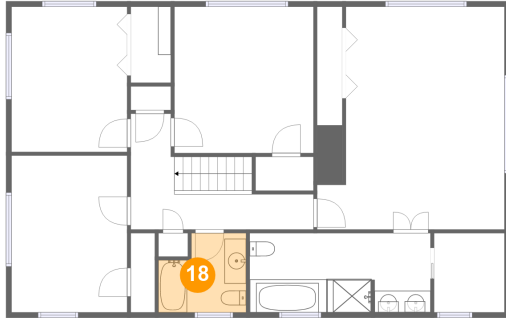
Max Dimensions: 16'9" x 7'4"  
Calculated Area: 121 sq. ft  
Included: Yes

Heated: Yes  
Finished: Yes  
Enclosed: Yes  
Contiguous: Yes  
Permitted: Yes  
Wet space: Yes  
Addition: No  
Conversion: No

## Home report

2865 South Jefferson Street, South Roanoke, Roanoke,  
Roanoke city, Virginia, United States, 24014

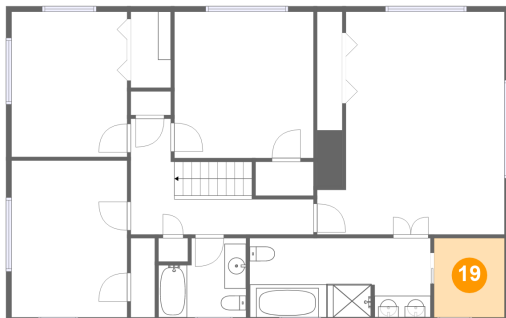
### 18 Floor 3 - Bath



Max Dimensions: 8'1" x 7'4"  
Calculated Area: 52 sq. ft  
Included: Yes

Heated: Yes  
Finished: Yes  
Enclosed: Yes  
Contiguous: Yes  
Permitted: Yes  
Wet space: Yes  
Addition: No  
Conversion: No

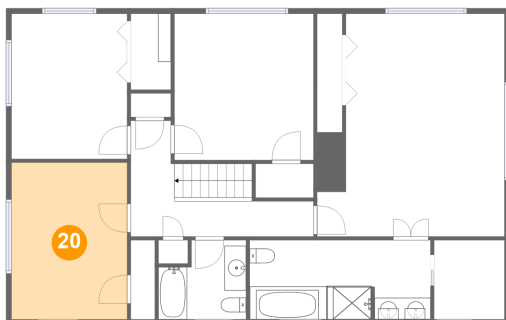
### 19 Floor 3 - W.I.C.



Max Dimensions: 6'6" x 7'4"  
Calculated Area: 48 sq. ft  
Included: Yes

Heated: Yes  
Finished: Yes  
Enclosed: Yes  
Contiguous: Yes  
Permitted: Yes  
Wet space: No  
Addition: No  
Conversion: No

### 20 Floor 3 - Bedroom

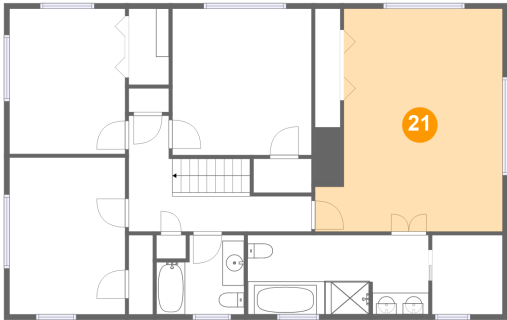


Max Dimensions: 10'8" x 14'6"  
Calculated Area: 155 sq. ft  
Included: Yes

Heated: Yes  
Finished: Yes  
Enclosed: Yes  
Contiguous: Yes  
Permitted: Yes  
Wet space: No  
Addition: No  
Conversion: No

2865 South Jefferson Street, South Roanoke, Roanoke,  
Roanoke city, Virginia, United States, 24014

**21** Floor 3 - Primary Bedroom



Max Dimensions: 17'4" x 20'7"  
Calculated Area: 313 sq. ft  
Included: Yes

Heated: Yes  
Finished: Yes  
Enclosed: Yes  
Contiguous: Yes  
Permitted: Yes  
Wet space: No  
Addition: No  
Conversion: No