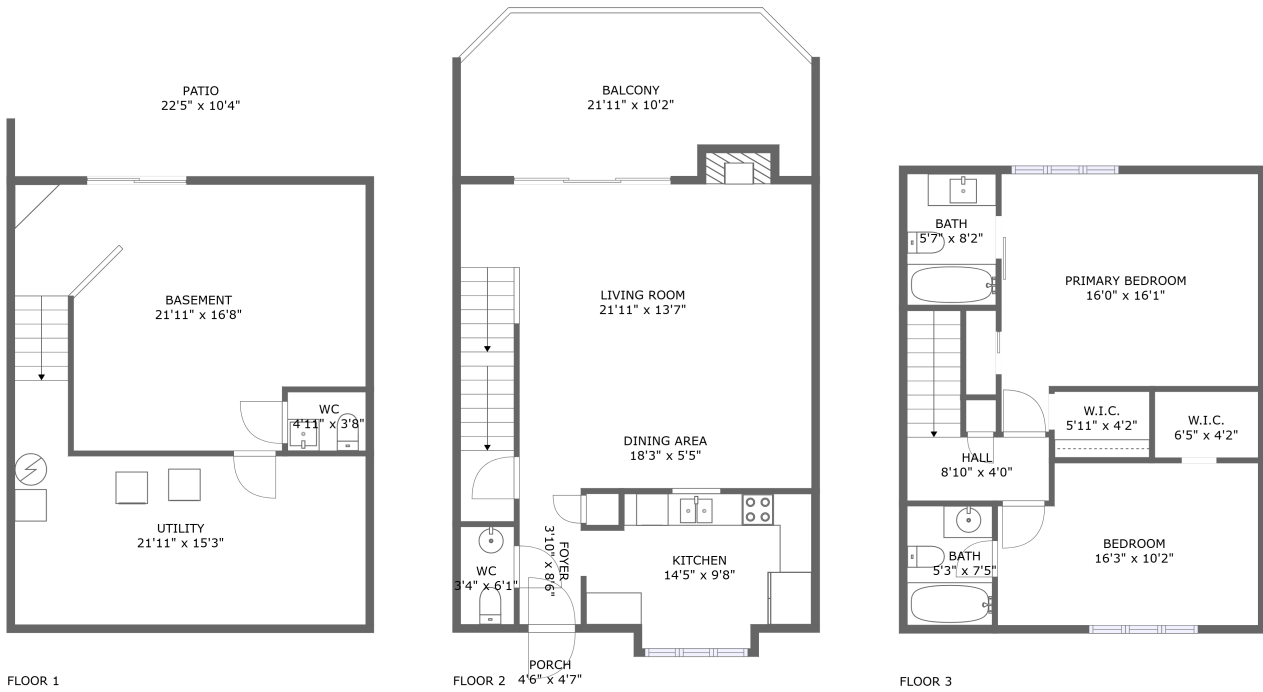


# 3447 Londonderry Court, Ruxton, Cave Spring, Roanoke, Roanoke County, Virginia, United

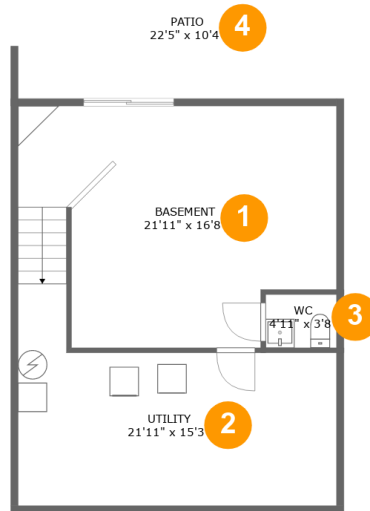


## Property Summary

**0** garages    **2** bedrooms    **2** bathrooms    **2** half baths

**3** floors    **1,304** Gross Living Area sqft    **2,402** total sqft

# 3447 Londonderry Court, Ruxton, Cave Spring, Roanoke, Roanoke County, Virginia, United



## Room Dimensions

**Floor 1****Total sqft: 864****Living area: 0**

#	Room name	Dimensions	Area (sqft)	Counted as Living Area
1	Basement	21'11" x 16'8"	326 sq. ft	No
2	Utility	21'11" x 15'3"	246 sq. ft	No
3	Wc	4'11" x 3'8"	18 sq. ft	No
4	Patio	22'5" x 10'4"	225 sq. ft	No

# 3447 Londonderry Court, Ruxton, Cave Spring, Roanoke, Roanoke County, Virginia, United



## Room Dimensions

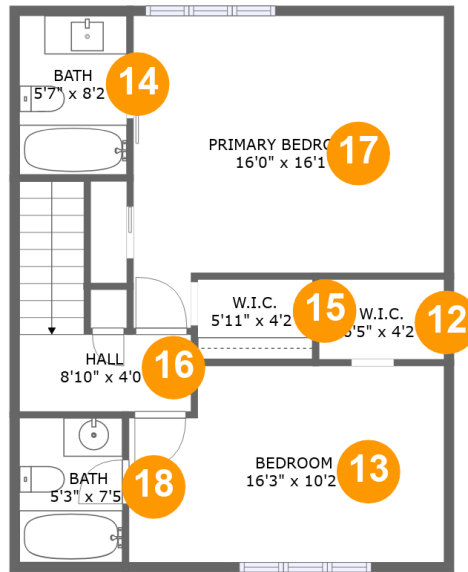
Floor 2

Total sqft: 884

Living area: 650

#	Room name	Dimensions	Area (sqft)	Counted as Living Area
5	Wc	3'4" x 6'1"	20 sq. ft	Yes
6	Living Room	21'11" x 13'7"	329 sq. ft	Yes
7	Dining Area	18'3" x 5'5"	98 sq. ft	Yes
8	Foyer	3'10" x 8'6"	33 sq. ft	Yes
9	Kitchen	14'5" x 9'8"	130 sq. ft	Yes
10	Porch	4'6" x 4'7"	21 sq. ft	No
11	Balcony	21'11" x 10'2"	203 sq. ft	No

# 3447 Londonderry Court, Ruxton, Cave Spring, Roanoke, Roanoke County, Virginia, United



## Room Dimensions

Floor 3

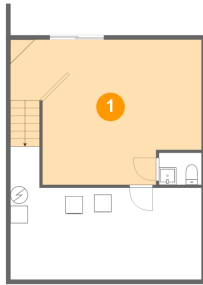
Total sqft: 654

Living area: 654

#	Room name	Dimensions	Area (sqft)	Counted as Living Area
12	W.i.c.	6'5" x 4'2"	27 sq. ft	Yes
13	Bedroom	16'3" x 10'2"	155 sq. ft	Yes
14	Bath	5'7" x 8'2"	46 sq. ft	Yes
15	W.i.c.	5'11" x 4'2"	24 sq. ft	Yes
16	Hall	8'10" x 4'0"	62 sq. ft	Yes
17	Primary Bedroom	16'0" x 16'1"	221 sq. ft	Yes
18	Bath	5'3" x 7'5"	40 sq. ft	Yes

# 3447 Londonderry Court, Ruxton, Cave Spring, Roanoke, Roanoke County, Virginia, United

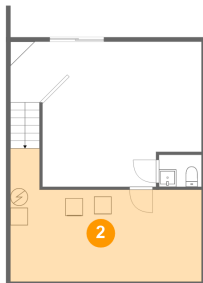
## 1 Floor 1 - Basement



Dimensions: 21'11" x 16'8"  
Area: 326 sq. ft  
Counted as Living Area: No

Heated: No  
Finished: Yes  
Enclosed: Yes  
Contiguous: Yes  
Permitted: Yes  
Wet Space: No  
Addition: No  
Conversion: No

## 2 Floor 1 - Utility

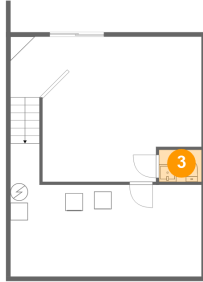


Dimensions: 21'11" x 15'3"  
Area: 246 sq. ft  
Counted as Living Area: No

Heated: Yes  
Finished: Yes  
Enclosed: Yes  
Contiguous: No  
Permitted: Yes  
Wet Space: No  
Addition: No  
Conversion: No

# 3447 Londonderry Court, Ruxton, Cave Spring, Roanoke, Roanoke County, Virginia, United

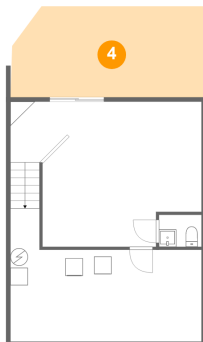
## 3 Floor 1 - Wc



Dimensions: 4'11" x 3'8"  
Area: 18 sq. ft  
Counted as Living Area: No

Heated: Yes  
Finished: Yes  
Enclosed: Yes  
Contiguous: No  
Permitted: Yes  
Wet Space: Yes  
Addition: No  
Conversion: No

## 4 Floor 1 - Patio



Dimensions: 22'5" x 10'4"  
Area: 225 sq. ft  
Counted as Living Area: No

Heated: No  
Finished: Yes  
Enclosed: No  
Contiguous: Yes  
Permitted: Yes  
Wet Space: No  
Addition: No  
Conversion: No

## 5 Floor 2 - Wc

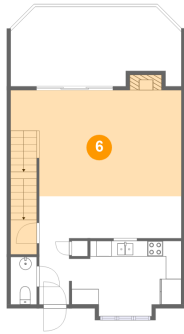


Dimensions: 3'4" x 6'1"  
Area: 20 sq. ft  
Counted as Living Area: Yes

Heated: Yes  
Finished: Yes  
Enclosed: Yes  
Contiguous: Yes  
Permitted: Yes  
Wet Space: Yes  
Addition: No  
Conversion: No

# 3447 Londonderry Court, Ruxton, Cave Spring, Roanoke, Roanoke County, Virginia, United

## 6 Floor 2 - Living Room



Dimensions: 21'11" x 13'7"  
Area: 329 sq. ft  
Counted as Living Area:  
Yes

Heated: Yes  
Finished: Yes  
Enclosed: Yes  
Contiguous:  
Yes  
Permitted: Yes  
Wet Space: No  
Addition: No  
Conversion: No

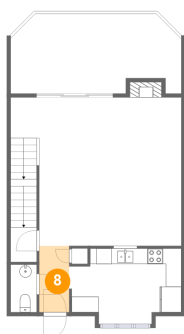
## 7 Floor 2 - Dining Area



Dimensions: 18'3" x 5'5"  
Area: 98 sq. ft  
Counted as Living Area:  
Yes

Heated: Yes  
Finished: Yes  
Enclosed: Yes  
Contiguous:  
Yes  
Permitted: Yes  
Wet Space: No  
Addition: No  
Conversion: No

## 8 Floor 2 - Foyer



Dimensions: 3'10" x 8'6"  
Area: 33 sq. ft  
Counted as Living Area:  
Yes

Heated: Yes  
Finished: Yes  
Enclosed: Yes  
Contiguous:  
Yes  
Permitted: Yes  
Wet Space: No  
Addition: No  
Conversion: No

# 3447 Londonderry Court, Ruxton, Cave Spring, Roanoke, Roanoke County, Virginia, United

## 9 Floor 2 - Kitchen



Dimensions: 14'5" x 9'8"  
Area: 130 sq. ft  
Counted as Living Area:  
Yes

Heated: Yes  
Finished: Yes  
Enclosed: Yes  
Contiguous:  
Yes  
Permitted: Yes  
Wet Space: No  
Addition: No  
Conversion: No

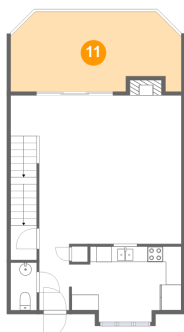
## 10 Floor 2 - Porch



Dimensions: 4'6" x 4'7"  
Area: 21 sq. ft  
Counted as Living Area: No

Heated: No  
Finished: Yes  
Enclosed: No  
Contiguous: Yes  
Permitted: Yes  
Wet Space: No  
Addition: No  
Conversion: No

## 11 Floor 2 - Balcony



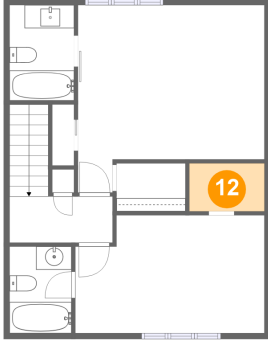
Dimensions: 21'11" x 10'2"  
Area: 203 sq. ft  
Counted as Living Area: No

Heated: No  
Finished: Yes  
Enclosed: No  
Contiguous: Yes  
Permitted: Yes  
Wet Space: No  
Addition: No  
Conversion: No



# 3447 Londonderry Court, Ruxton, Cave Spring, Roanoke, Roanoke County, Virginia, United

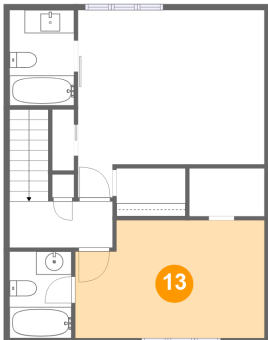
## 12 Floor 3 - W.i.c.



Dimensions: 6'5" x 4'2"  
Area: 27 sq. ft  
Counted as Living Area:  
Yes

Heated: Yes  
Finished: Yes  
Enclosed: Yes  
Contiguous:  
Yes  
Permitted: Yes  
Wet Space: No  
Addition: No  
Conversion: No

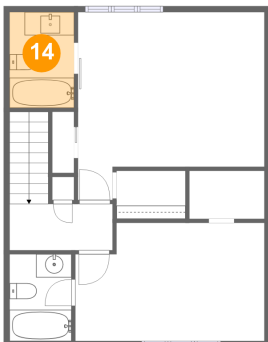
## 13 Floor 3 - Bedroom



Dimensions: 16'3" x 10'2"  
Area: 155 sq. ft  
Counted as Living Area:  
Yes

Heated: Yes  
Finished: Yes  
Enclosed: Yes  
Contiguous:  
Yes  
Permitted: Yes  
Wet Space: No  
Addition: No  
Conversion: No

## 14 Floor 3 - Bath

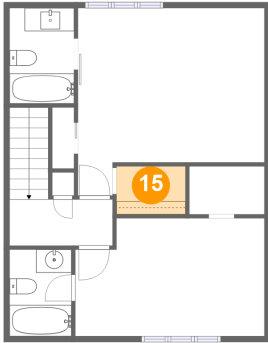


Dimensions: 5'7" x 8'2"  
Area: 46 sq. ft  
Counted as Living Area:  
Yes

Heated: Yes  
Finished: Yes  
Enclosed: Yes  
Contiguous:  
Yes  
Permitted: Yes  
Wet Space: Yes  
Addition: No  
Conversion: No

# 3447 Londonderry Court, Ruxton, Cave Spring, Roanoke, Roanoke County, Virginia, United

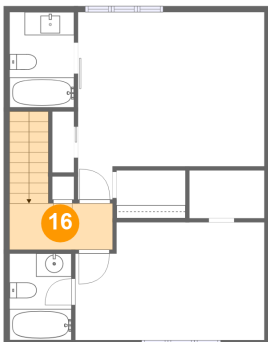
## 15 Floor 3 - W.i.c.



Dimensions: 5'11" x 4'2"  
Area: 24 sq. ft  
Counted as Living Area:  
Yes

Heated: Yes  
Finished: Yes  
Enclosed: Yes  
Contiguous:  
Yes  
Permitted: Yes  
Wet Space: No  
Addition: No  
Conversion: No

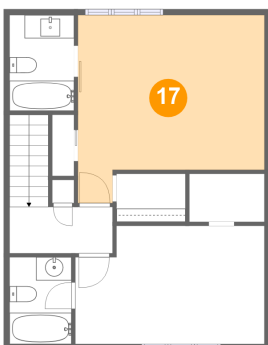
## 16 Floor 3 - Hall



Dimensions: 8'10" x 4'0"  
Area: 62 sq. ft  
Counted as Living Area:  
Yes

Heated: Yes  
Finished: Yes  
Enclosed: Yes  
Contiguous:  
Yes  
Permitted: Yes  
Wet Space: No  
Addition: No  
Conversion: No

## 17 Floor 3 - Primary Bedroom

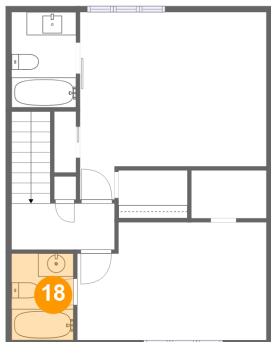


Dimensions: 16'0" x 16'1"  
Area: 221 sq. ft  
Counted as Living Area:  
Yes

Heated: Yes  
Finished: Yes  
Enclosed: Yes  
Contiguous:  
Yes  
Permitted: Yes  
Wet Space: No  
Addition: No  
Conversion: No

# 3447 Londonderry Court, Ruxton, Cave Spring, Roanoke, Roanoke County, Virginia, United

## 18 Floor 3 - Bath



Dimensions: 5'3" x 7'5"  
Area: 40 sq. ft  
Counted as Living Area:  
Yes

Heated: Yes  
Finished: Yes  
Enclosed: Yes  
Contiguous:  
Yes  
Permitted: Yes  
Wet Space: Yes  
Addition: No  
Conversion: No