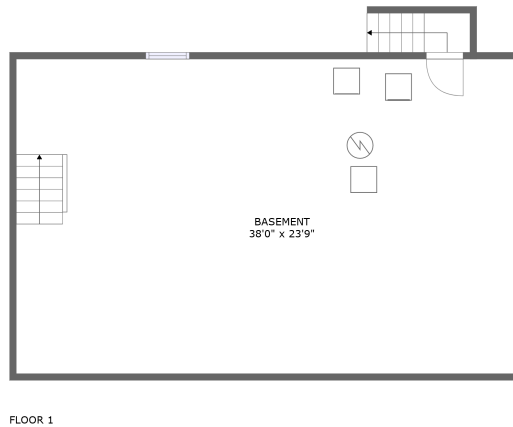
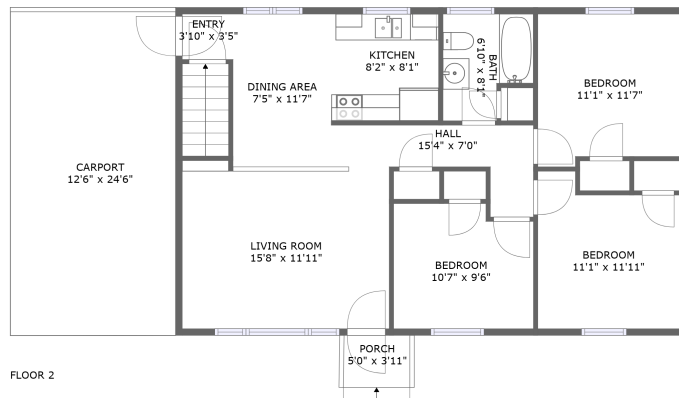



# 3808 Salem Turnpike Northwest, Wilmont, Roanoke, Roanoke, Virginia, United States, 24017



## Property summary


 **0** Garages

 **3** Bedrooms

 **1** Bathrooms

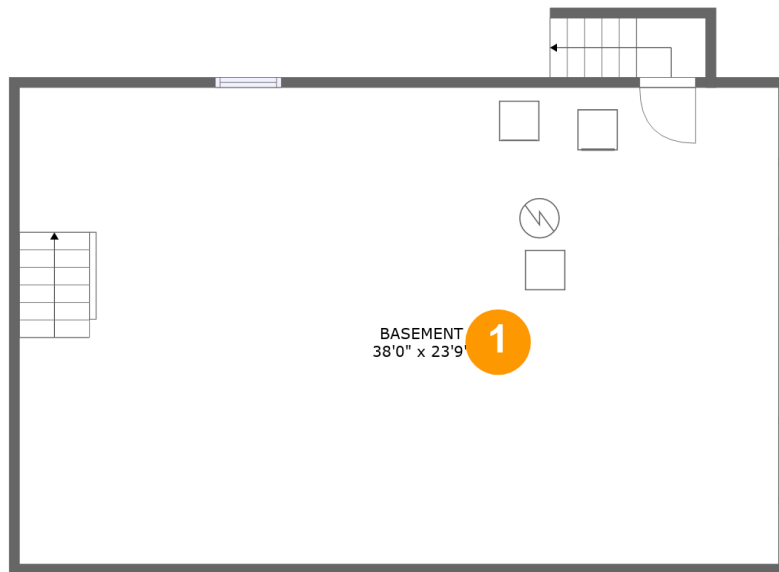
 **0** Half baths

 **2** Floors

 **970** Gross living area sqft

 **2,271** Total sqft

**3808 Salem Turnpike Northwest, Wilmont, Roanoke,  
Roanoke, Virginia, United States, 24017**



**Room dimensions**

Floor 1

Total sqft: 970

Living area: 0

#		Dimensions	sqft	Counted as living area
1	Basement	38'0" x 23'9"	907 sq. ft	No

# 3808 Salem Turnpike Northwest, Wilmont, Roanoke, Roanoke, Virginia, United States, 24017



## Room dimensions

Floor 2

Total sqft: 1301

Living area: 970

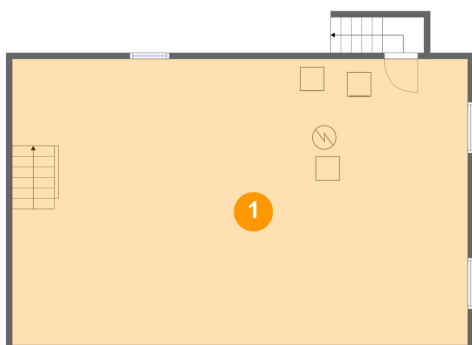
#		Dimensions	sqft	Counted as living area
2	Entry	3'10" x 3'5"	13 sq. ft	Yes
3	Bedroom	10'7" x 9'6"	96 sq. ft	Yes
4	Carport	12'6" x 24'6"	311 sq. ft	No
5	Living Room	15'8" x 11'11"	194 sq. ft	Yes
6	Outdoor	5'0" x 3'11"	20 sq. ft	No
7	Bedroom	11'1" x 11'7"	122 sq. ft	Yes
8	Dining Room	7'5" x 11'7"	86 sq. ft	Yes
9	Hall	15'4" x 7'0"	61 sq. ft	Yes
10	Bath	6'10" x 8'1"	48 sq. ft	Yes
11	Bedroom	11'1" x 11'11"	117 sq. ft	Yes
12	Kitchen	8'2" x 8'1"	66 sq. ft	Yes

Scan captured on Mon, 16 Dec 2024 16:00:46 GMT

Information is calculated by Cubicasa technology deemed highly reliable but not guaranteed.

# 3808 Salem Turnpike Northwest, Wilmont, Roanoke, Roanoke, Virginia, United States, 24017

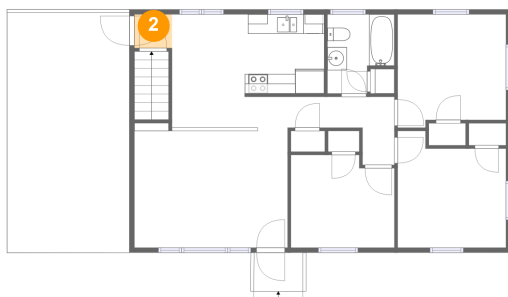
## 1 Floor 1 - Basement



Dimensions: 38'0" x 23'9"  
Area: 907 sq. ft  
Counted as living area: No

Heated: No  
Finished: No  
Enclosed: Yes  
Contiguous: Yes  
Permitted: Yes  
Wet space: No  
Addition: No  
Conversion: No

## 2 Floor 2 - Entry



Dimensions: 3'10" x 3'5"  
Area: 13 sq. ft  
Counted as living area: Yes

Heated: Yes  
Finished: Yes  
Enclosed: Yes  
Contiguous: Yes  
Permitted: Yes  
Wet space: No  
Addition: No  
Conversion: No

# 3808 Salem Turnpike Northwest, Wilmont, Roanoke, Roanoke, Virginia, United States, 24017

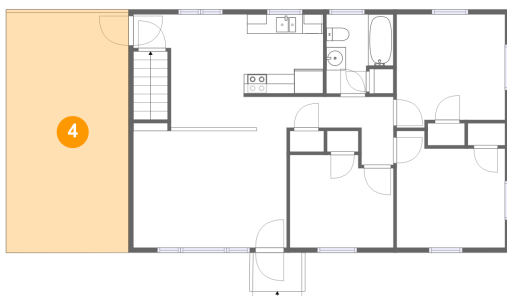
## 3 Floor 2 - Bedroom



Dimensions: 10'7" x 9'6"  
Area: 96 sq. ft  
Counted as living area: Yes

Heated: Yes  
Finished: Yes  
Enclosed: Yes  
Contiguous: Yes  
Permitted: Yes  
Wet space: No  
Addition: No  
Conversion: No

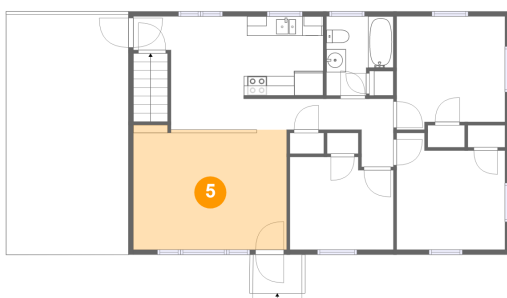
## 4 Floor 2 - Carport



Dimensions: 12'6" x 24'6"  
Area: 311 sq. ft  
Counted as living area: No

Heated: No  
Finished: Yes  
Enclosed: No  
Contiguous: Yes  
Permitted: Yes  
Wet space: No  
Addition: No  
Conversion: No

## 5 Floor 2 - Living Room



Dimensions: 15'8" x 11'11"  
Area: 194 sq. ft  
Counted as living area: Yes

Heated: Yes  
Finished: Yes  
Enclosed: Yes  
Contiguous: Yes  
Permitted: Yes  
Wet space: No  
Addition: No  
Conversion: No

# 3808 Salem Turnpike Northwest, Wilmont, Roanoke, Roanoke, Virginia, United States, 24017

## 6 Floor 2 - Outdoor



Dimensions: 5'0" x 3'11"  
Area: 20 sq. ft  
Counted as living area: No

Heated: No  
Finished: Yes  
Enclosed: No  
Contiguous: Yes  
Permitted: Yes  
Wet space: No  
Addition: No  
Conversion: No

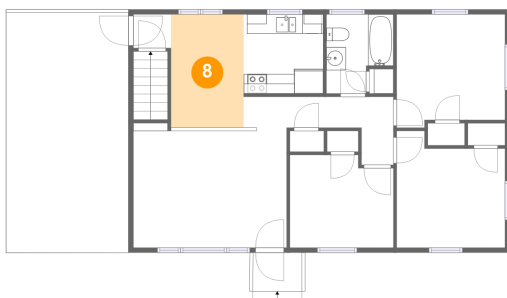
## 7 Floor 2 - Bedroom



Dimensions: 11'1" x 11'7"  
Area: 122 sq. ft  
Counted as living area: Yes

Heated: Yes  
Finished: Yes  
Enclosed: Yes  
Contiguous: Yes  
Permitted: Yes  
Wet space: No  
Addition: No  
Conversion: No

## 8 Floor 2 - Dining Room



Dimensions: 7'5" x 11'7"  
Area: 86 sq. ft  
Counted as living area: Yes

Heated: Yes  
Finished: Yes  
Enclosed: Yes  
Contiguous: Yes  
Permitted: Yes  
Wet space: No  
Addition: No  
Conversion: No

# 3808 Salem Turnpike Northwest, Wilmont, Roanoke, Roanoke, Virginia, United States, 24017

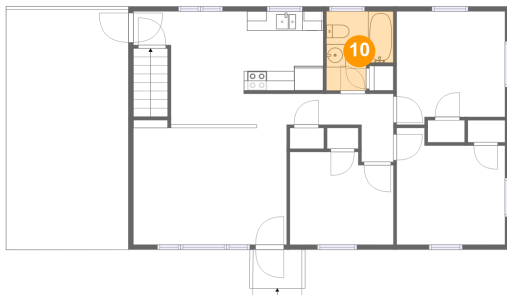
## 9 Floor 2 - Hall



Dimensions: 15'4" x 7'0"  
Area: 61 sq. ft  
Counted as living area: Yes

Heated: Yes  
Finished: Yes  
Enclosed: Yes  
Contiguous: Yes  
Permitted: Yes  
Wet space: No  
Addition: No  
Conversion: No

## 10 Floor 2 - Bath



Dimensions: 6'10" x 8'1"  
Area: 48 sq. ft  
Counted as living area: Yes

Heated: Yes  
Finished: Yes  
Enclosed: Yes  
Contiguous: Yes  
Permitted: Yes  
Wet space: Yes  
Addition: No  
Conversion: No

## 11 Floor 2 - Bedroom



Dimensions: 11'1" x 11'11"  
Area: 117 sq. ft  
Counted as living area: Yes

Heated: Yes  
Finished: Yes  
Enclosed: Yes  
Contiguous: Yes  
Permitted: Yes  
Wet space: No  
Addition: No  
Conversion: No

**3808 Salem Turnpike Northwest, Wilmont, Roanoke,  
Roanoke, Virginia, United States, 24017**

**12 Floor 2 - Kitchen**



**Dimensions: 8'2" x 8'1"**  
**Area: 66 sq. ft**  
**Counted as living area: Yes**

**Heated: Yes**  
**Finished: Yes**  
**Enclosed: Yes**  
**Contiguous: Yes**  
**Permitted: Yes**  
**Wet space: No**  
**Addition: No**  
**Conversion: No**