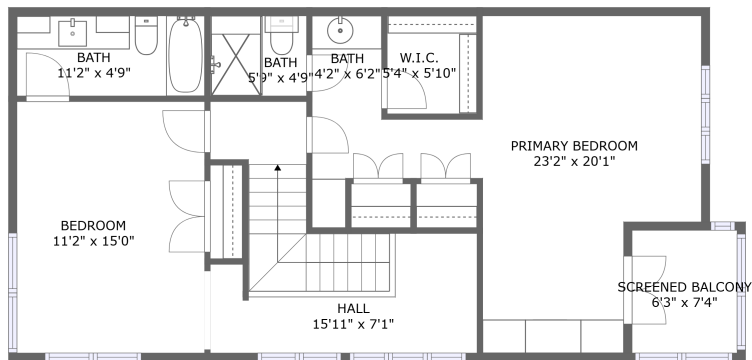
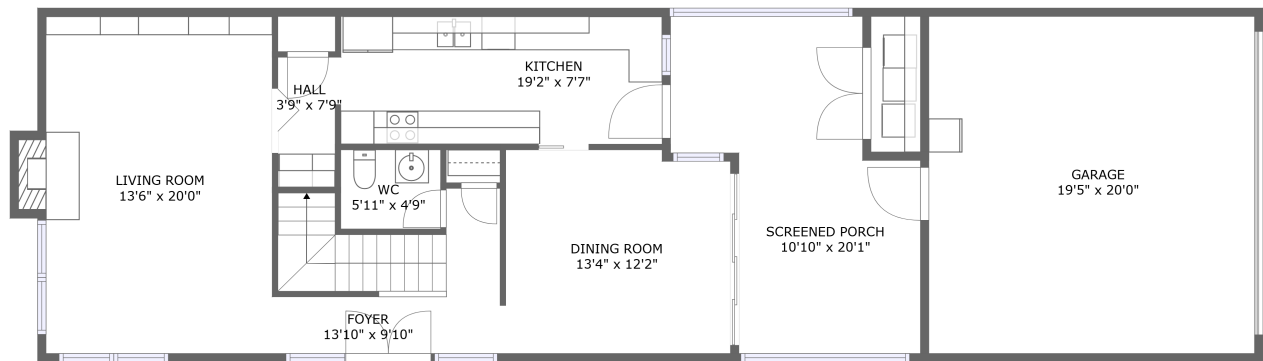


**3308 Hawthorne Avenue, Perry Heights, Dallas,  
Dallas County, Texas, United States, 75219**



FLOOR 2

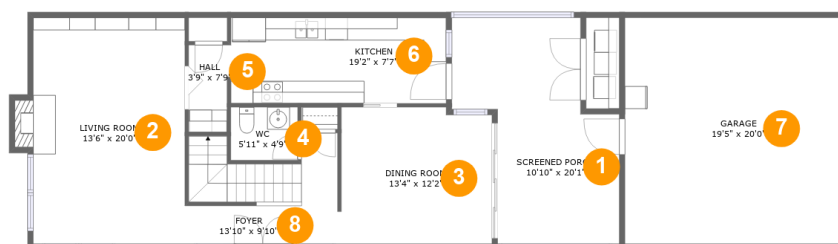


FLOOR 1

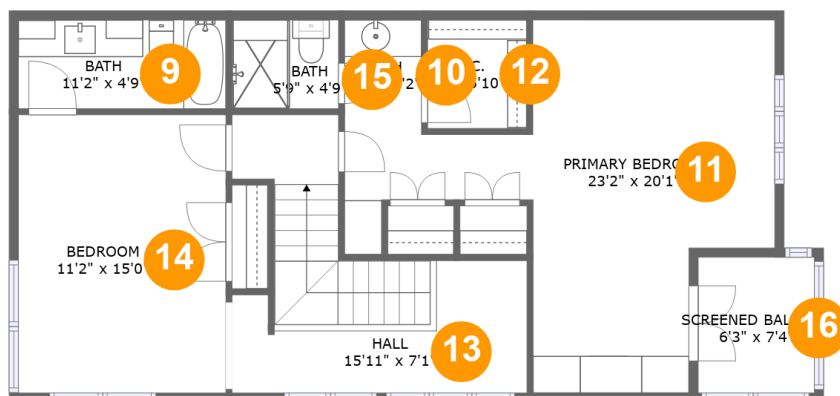
**Property summary**

 **1** Garages  **2** Bedrooms  **2** Bathrooms  **1** Half baths

 **2** Floors  **1,688** Gross living area sqft  **2,445** Total sqft

**3308 Hawthorne Avenue, Perry Heights, Dallas,  
Dallas County, Texas, United States, 75219****Room dimensions****Floor 1****Total sqft: 1547    Living area: 844**

#		Dimensions	sqft	Counted as living area
1	Outdoor	10'10" x 20'1"	221 sq. ft	No
2	Living Room	13'6" x 20'0"	277 sq. ft	Yes
3	Dining Room	13'4" x 12'2"	160 sq. ft	Yes
4	Bath	5'11" x 4'9"	28 sq. ft	Yes
5	Hall	3'9" x 7'9"	27 sq. ft	Yes
6	Kitchen	19'2" x 7'7"	145 sq. ft	Yes
7	Garage	19'5" x 20'0"	389 sq. ft	No
8	Entry	13'10" x 9'10"	111 sq. ft	Yes

**3308 Hawthorne Avenue, Perry Heights, Dallas,  
Dallas County, Texas, United States, 75219****Room dimensions****Floor 2****Total sqft: 898    Living area: 844**

#		Dimensions	sqft	Counted as living area
9	Bath	11'2" x 4'9"	53 sq. ft	Yes
10	Bath	4'2" x 6'2"	26 sq. ft	Yes
11	Bedroom	23'2" x 20'1"	267 sq. ft	Yes
12	Cl	5'4" x 5'10"	31 sq. ft	Yes
13	Hall	15'11" x 7'1"	143 sq. ft	Yes
14	Bedroom	11'2" x 15'0"	167 sq. ft	Yes
15	Bath	5'9" x 4'9"	27 sq. ft	Yes
16	Outdoor	6'3" x 7'4"	46 sq. ft	No

**3308 Hawthorne Avenue, Perry Heights, Dallas,  
Dallas County, Texas, United States, 75219**

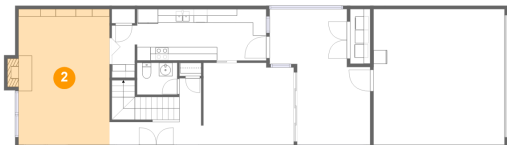
**1 Floor 1 - Outdoor**



Dimensions: 10'10" x 20'1"  
Area: 221 sq. ft  
Counted as living area: No

Heated: No  
Finished: Yes  
Enclosed: No  
Contiguous: Yes  
Permitted: Yes  
Wet space: No  
Addition: No  
Conversion: No

**2 Floor 1 - Living Room**



Dimensions: 13'6" x 20'0"  
Area: 277 sq. ft  
Counted as living area: Yes

Heated: Yes  
Finished: Yes  
Enclosed: Yes  
Contiguous: Yes  
Permitted: Yes  
Wet space: No  
Addition: No  
Conversion: No

## 3308 Hawthorne Avenue, Perry Heights, Dallas, Dallas County, Texas, United States, 75219

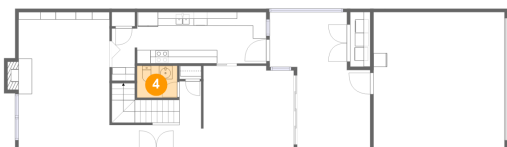
### 3 Floor 1 - Dining Room



Dimensions: 13'4" x 12'2"  
Area: 160 sq. ft  
Counted as living area: Yes

Heated: Yes  
Finished: Yes  
Enclosed: Yes  
Contiguous: Yes  
Permitted: Yes  
Wet space: No  
Addition: No  
Conversion: No

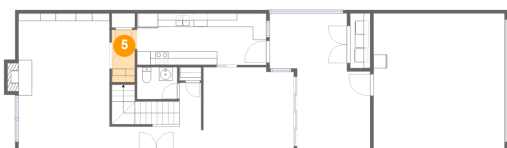
### 4 Floor 1 - Bath



Dimensions: 5'11" x 4'9"  
Area: 28 sq. ft  
Counted as living area: Yes

Heated: Yes  
Finished: Yes  
Enclosed: Yes  
Contiguous: Yes  
Permitted: Yes  
Wet space: Yes  
Addition: No  
Conversion: No

### 5 Floor 1 - Hall

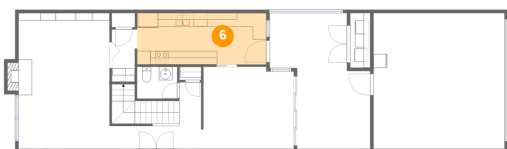


Dimensions: 3'9" x 7'9"  
Area: 27 sq. ft  
Counted as living area: Yes

Heated: Yes  
Finished: Yes  
Enclosed: Yes  
Contiguous: Yes  
Permitted: Yes  
Wet space: No  
Addition: No  
Conversion: No

**3308 Hawthorne Avenue, Perry Heights, Dallas,  
Dallas County, Texas, United States, 75219**

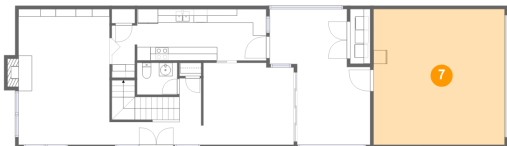
## **6 Floor 1 - Kitchen**



Dimensions: 19'2" x 7'7"  
Area: 145 sq. ft  
Counted as living area: Yes

Heated: Yes  
Finished: Yes  
Enclosed: Yes  
Contiguous: Yes  
Permitted: Yes  
Wet space: No  
Addition: No  
Conversion: No

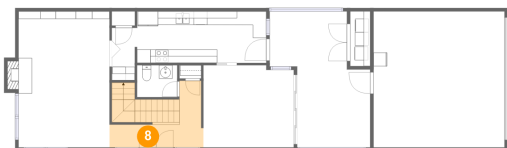
## **7 Floor 1 - Garage**



Dimensions: 19'5" x 20'0"  
Area: 389 sq. ft  
Counted as living area: No

Heated: No  
Finished: No  
Enclosed: Yes  
Contiguous: Yes  
Permitted: Yes  
Wet space: No  
Addition: No  
Conversion: No

## **8 Floor 1 - Entry**



Dimensions: 13'10" x 9'10"  
Area: 111 sq. ft  
Counted as living area: Yes

Heated: Yes  
Finished: Yes  
Enclosed: Yes  
Contiguous: Yes  
Permitted: Yes  
Wet space: No  
Addition: No  
Conversion: No

# 3308 Hawthorne Avenue, Perry Heights, Dallas, Dallas County, Texas, United States, 75219

## 9 Floor 2 - Bath



Dimensions: 11'2" x 4'9"  
Area: 53 sq. ft  
Counted as living area: Yes

Heated: Yes  
Finished: Yes  
Enclosed: Yes  
Contiguous: Yes  
Permitted: Yes  
Wet space: Yes  
Addition: No  
Conversion: No

## 10 Floor 2 - Bath



Dimensions: 4'2" x 6'2"  
Area: 26 sq. ft  
Counted as living area: Yes

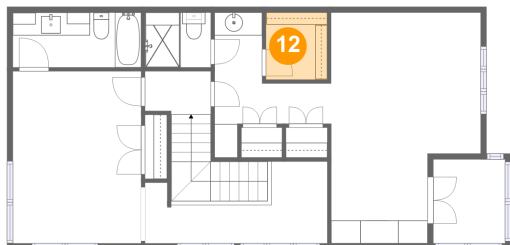
Heated: Yes  
Finished: Yes  
Enclosed: Yes  
Contiguous: Yes  
Permitted: Yes  
Wet space: Yes  
Addition: No  
Conversion: No

## 11 Floor 2 - Bedroom



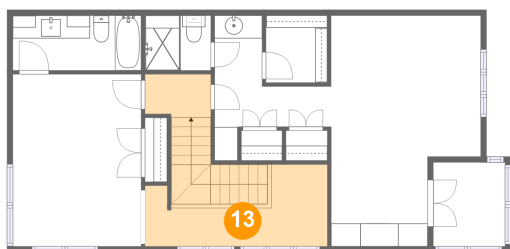
Dimensions: 23'2" x 20'1"  
Area: 267 sq. ft  
Counted as living area: Yes

Heated: Yes  
Finished: Yes  
Enclosed: Yes  
Contiguous: Yes  
Permitted: Yes  
Wet space: No  
Addition: No  
Conversion: No

**3308 Hawthorne Avenue, Perry Heights, Dallas,  
Dallas County, Texas, United States, 75219****12 Floor 2 - Cl**

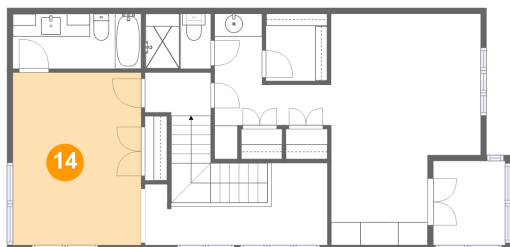
Dimensions: 5'4" x 5'10"  
Area: 31 sq. ft  
Counted as living area: Yes

Heated: Yes  
Finished: Yes  
Enclosed: Yes  
Contiguous: Yes  
Permitted: Yes  
Wet space: No  
Addition: No  
Conversion: No

**13 Floor 2 - Hall**

Dimensions: 15'11" x 7'1"  
Area: 143 sq. ft  
Counted as living area: Yes

Heated: Yes  
Finished: Yes  
Enclosed: Yes  
Contiguous: Yes  
Permitted: Yes  
Wet space: No  
Addition: No  
Conversion: No

**14 Floor 2 - Bedroom**

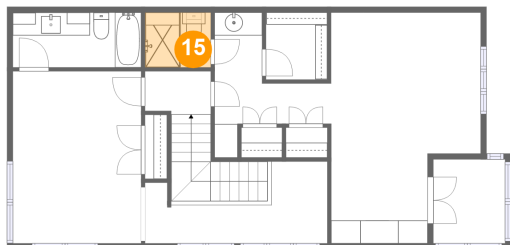
Dimensions: 11'2" x 15'0"  
Area: 167 sq. ft  
Counted as living area: Yes

Heated: Yes  
Finished: Yes  
Enclosed: Yes  
Contiguous: Yes  
Permitted: Yes  
Wet space: No  
Addition: No  
Conversion: No



**3308 Hawthorne Avenue, Perry Heights, Dallas,  
Dallas County, Texas, United States, 75219**

## **15 Floor 2 - Bath**



Dimensions: 5'9" x 4'9"  
Area: 27 sq. ft  
Counted as living area: Yes

Heated: Yes  
Finished: Yes  
Enclosed: Yes  
Contiguous: Yes  
Permitted: Yes  
Wet space: Yes  
Addition: No  
Conversion: No

## **16 Floor 2 - Outdoor**



Dimensions: 6'3" x 7'4"  
Area: 46 sq. ft  
Counted as living area: No

Heated: No  
Finished: Yes  
Enclosed: No  
Contiguous: Yes  
Permitted: Yes  
Wet space: No  
Addition: No  
Conversion: No