


Home report


135 Bentgrass Dr, Hardy, Virginia, United States



Property summary


 **1** Garages

 **4** Bedrooms

 **3** Bathrooms

 **1** Half baths

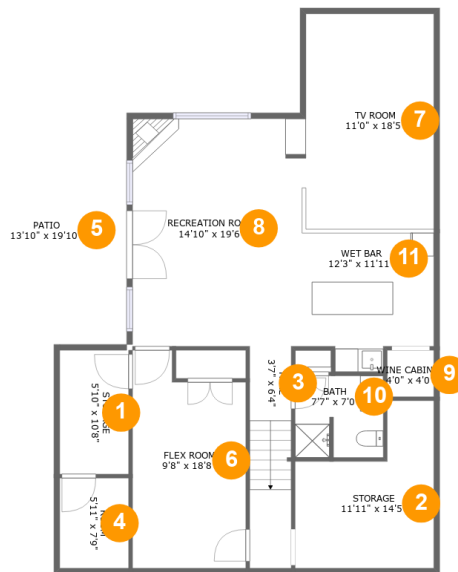
 **3** Floors

 **4,769** Gross living area sqft

 **6,305** Total sqft

Home report

135 Bentgrass Dr, Hardy, Virginia, United States



Room dimensions

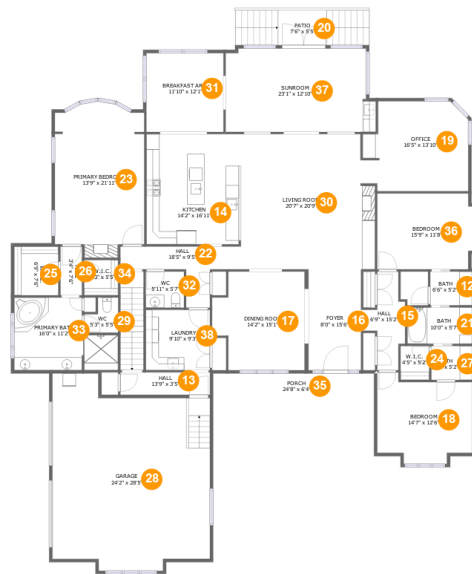
Floor 1

Total sqft: 1569 Living area: 1004

#		Dimensions	sqft	Counted as living area
1	Storage	5'10" x 10'8"	63 sq. ft	No
2	Storage	11'11" x 14'5"	130 sq. ft	No
3	Hall	3'7" x 6'4"	68 sq. ft	Yes
4	Room	5'11" x 7'9"	46 sq. ft	No
5	Patio	13'10" x 19'10"	275 sq. ft	No
6	Flex Room	9'8" x 18'8"	164 sq. ft	Yes
7	Tv Room	11'0" x 18'5"	207 sq. ft	Yes
8	Recreation Room	14'10" x 19'6"	278 sq. ft	Yes
9	Wine Cabinet	4'0" x 4'0"	16 sq. ft	No
10	Bath	7'7" x 7'0"	52 sq. ft	Yes
11	Wet Bar	12'3" x 11'11"	128 sq. ft	Yes

Home report

135 Bentgrass Dr, Hardy, Virginia, United States



Room dimensions

Floor 2

Total sqft: 4357 Living area: 3407

#		Dimensions	sqft	Counted as living area
12	Bath	6'6" x 5'2"	33 sq. ft	Yes
13	Hall	13'9" x 3'5"	47 sq. ft	Yes
14	Kitchen	14'2" x 16'11"	245 sq. ft	Yes
15	Hall	6'9" x 15'2"	64 sq. ft	Yes
16	Foyer	8'0" x 15'6"	125 sq. ft	Yes
17	Dining Room	14'2" x 15'1"	192 sq. ft	Yes
18	Bedroom	14'7" x 12'6"	175 sq. ft	Yes
19	Office	16'5" x 13'10"	205 sq. ft	Yes
20	Patio	7'6" x 5'5"	111 sq. ft	No
21	Bath	10'0" x 5'7"	56 sq. ft	Yes
22	Hall	18'5" x 9'5"	87 sq. ft	Yes

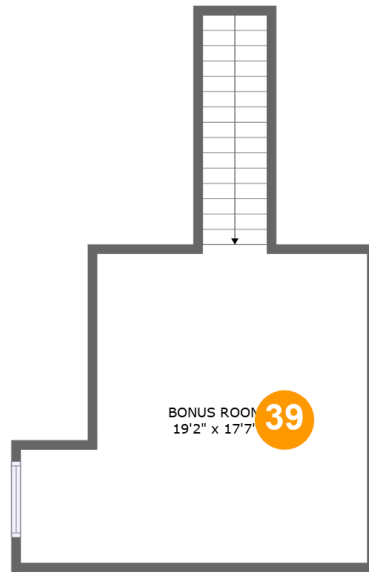
Home report

135 Bentgrass Dr,Hardy,Virginia,United States

#		Dimensions	sqft	Counted as living area
23	Primary Bedroom	13'9" x 21'11"	298 sq. ft	Yes
24	W.I.C.	4'5" x 5'2"	23 sq. ft	Yes
25	W.I.C.	6'9" x 7'6"	51 sq. ft	Yes
26	Hall	3'4" x 7'6"	25 sq. ft	Yes
27	Bath	6'3" x 5'2"	33 sq. ft	Yes
28	Garage	24'2" x 28'5"	642 sq. ft	No
29	WC	5'3" x 5'5"	23 sq. ft	Yes
30	Living Room	20'7" x 20'9"	411 sq. ft	Yes
31	Breakfast Area	11'10" x 12'1"	143 sq. ft	Yes
32	WC	5'11" x 5'7"	33 sq. ft	Yes
33	Primary Bath	16'0" x 11'2"	145 sq. ft	Yes
34	W.I.C.	5'3" x 5'5"	28 sq. ft	Yes
35	Porch	24'8" x 6'4"	156 sq. ft	No
36	Bedroom	15'9" x 11'8"	175 sq. ft	Yes
37	Sunroom	23'1" x 12'10"	287 sq. ft	Yes
38	Laundry	9'10" x 9'3"	91 sq. ft	Yes

Home report

135 Bentgrass Dr, Hardy, Virginia, United States



Room dimensions

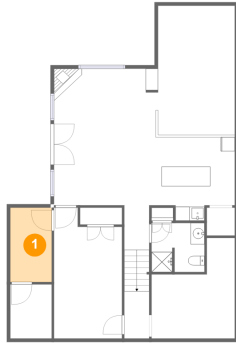
Floor 3

Total sqft: 379

Living area: 358

#		Dimensions	sqft	Counted as living area
39	Bonus Room	19'2" x 17'7"	321 sq. ft	Yes

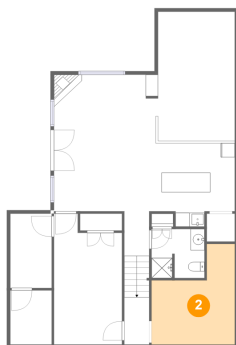
1 Floor 1 - Storage



Dimensions: 5'10" x 10'8"
Area: 63 sq. ft
Counted as living area: No

Heated: No
Finished: No
Enclosed: No
Contiguous: Yes
Permitted: Yes
Wet space: No
Addition: No
Conversion: No

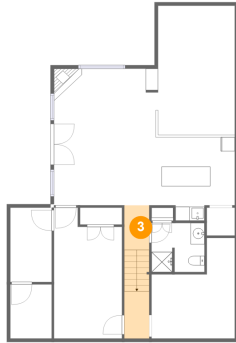
2 Floor 1 - Storage



Dimensions: 11'11" x 14'5"
Area: 130 sq. ft
Counted as living area: No

Heated: No
Finished: No
Enclosed: No
Contiguous: Yes
Permitted: Yes
Wet space: No
Addition: No
Conversion: No

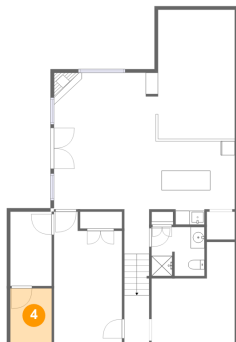
3 Floor 1 - Hall



Dimensions: 3'7" x 6'4"
Area: 68 sq. ft
Counted as living area: Yes

Heated: Yes
Finished: Yes
Enclosed: Yes
Contiguous: Yes
Permitted: Yes
Wet space: No
Addition: No
Conversion: No

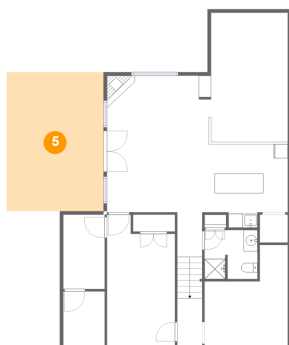
4 Floor 1 - Room



Dimensions: 5'11" x 7'9"
Area: 46 sq. ft
Counted as living area: No

Heated: Yes
Finished: Yes
Enclosed: Yes
Contiguous: No
Permitted: Yes
Wet space: No
Addition: No
Conversion: No

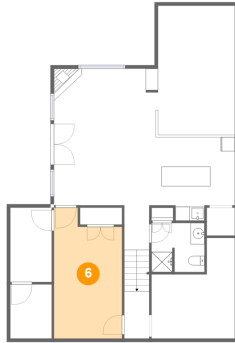
5 Floor 1 - Patio



Dimensions: 13'10" x 19'10"
Area: 275 sq. ft
Counted as living area: No

Heated: No
Finished: Yes
Enclosed: No
Contiguous: Yes
Permitted: Yes
Wet space: No
Addition: No
Conversion: No

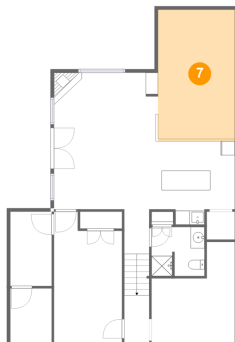
6 Floor 1 - Flex Room



Dimensions: 9'8" x 18'8"
Area: 164 sq. ft
Counted as living area: Yes

Heated: Yes
Finished: Yes
Enclosed: Yes
Contiguous: Yes
Permitted: Yes
Wet space: No
Addition: No
Conversion: No

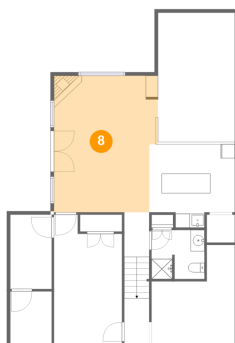
7 Floor 1 - Tv Room



Dimensions: 11'0" x 18'5"
Area: 207 sq. ft
Counted as living area: Yes

Heated: Yes
Finished: Yes
Enclosed: Yes
Contiguous: Yes
Permitted: Yes
Wet space: No
Addition: No
Conversion: No

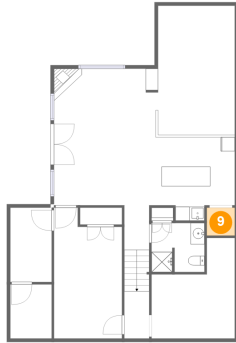
8 Floor 1 - Recreation Room



Dimensions: 14'10" x 19'6"
Area: 278 sq. ft
Counted as living area: Yes

Heated: Yes
Finished: Yes
Enclosed: Yes
Contiguous: Yes
Permitted: Yes
Wet space: No
Addition: No
Conversion: No

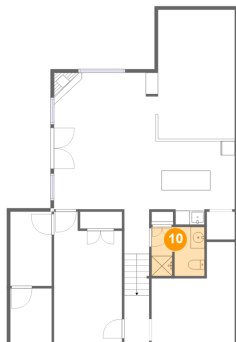
9 Floor 1 - Wine Cabinet



Dimensions: 4'0" x 4'0"
Area: 16 sq. ft
Counted as living area: No

Heated: No
Finished: No
Enclosed: Yes
Contiguous: Yes
Permitted: Yes
Wet space: No
Addition: No
Conversion: No

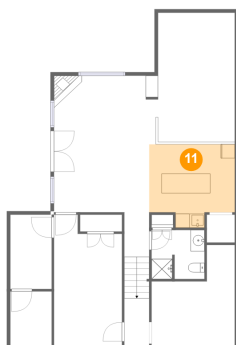
10 Floor 1 - Bath



Dimensions: 7'7" x 7'0"
Area: 52 sq. ft
Counted as living area: Yes

Heated: Yes
Finished: Yes
Enclosed: Yes
Contiguous: Yes
Permitted: Yes
Wet space: Yes
Addition: No
Conversion: No

11 Floor 1 - Wet Bar



Dimensions: 12'3" x 11'11"
Area: 128 sq. ft
Counted as living area: Yes

Heated: Yes
Finished: Yes
Enclosed: Yes
Contiguous: Yes
Permitted: Yes
Wet space: No
Addition: No
Conversion: No

12 Floor 2 - Bath



Dimensions: 6'6" x 5'2"
Area: 33 sq. ft
Counted as living area: Yes

Heated: Yes
Finished: Yes
Enclosed: Yes
Contiguous: Yes
Permitted: Yes
Wet space: Yes
Addition: No
Conversion: No

13 Floor 2 - Hall



Dimensions: 13'9" x 3'5"
Area: 47 sq. ft
Counted as living area: Yes

Heated: Yes
Finished: Yes
Enclosed: Yes
Contiguous: Yes
Permitted: Yes
Wet space: No
Addition: No
Conversion: No

14 Floor 2 - Kitchen



Dimensions: 14'2" x 16'11"
Area: 245 sq. ft
Counted as living area: Yes

Heated: Yes
Finished: Yes
Enclosed: Yes
Contiguous: Yes
Permitted: Yes
Wet space: No
Addition: No
Conversion: No

15 Floor 2 - Hall



Dimensions: 6'9" x 15'2"
Area: 64 sq. ft
Counted as living area: Yes

Heated: Yes
Finished: Yes
Enclosed: Yes
Contiguous: Yes
Permitted: Yes
Wet space: No
Addition: No
Conversion: No

16 Floor 2 - Foyer



Dimensions: 8'0" x 15'6"
Area: 125 sq. ft
Counted as living area: Yes

Heated: Yes
Finished: Yes
Enclosed: Yes
Contiguous: Yes
Permitted: Yes
Wet space: No
Addition: No
Conversion: No

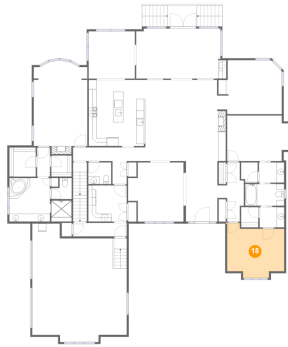
17 Floor 2 - Dining Room



Dimensions: 14'2" x 15'1"
Area: 192 sq. ft
Counted as living area: Yes

Heated: Yes
Finished: Yes
Enclosed: Yes
Contiguous: Yes
Permitted: Yes
Wet space: No
Addition: No
Conversion: No

18 Floor 2 - Bedroom



Dimensions: 14'7" x 12'6"
Area: 175 sq. ft
Counted as living area: Yes

Heated: Yes
Finished: Yes
Enclosed: Yes
Contiguous: Yes
Permitted: Yes
Wet space: No
Addition: No
Conversion: No

19 Floor 2 - Office



Dimensions: 16'5" x 13'10"
Area: 205 sq. ft
Counted as living area: Yes

Heated: Yes
Finished: Yes
Enclosed: Yes
Contiguous: Yes
Permitted: Yes
Wet space: No
Addition: No
Conversion: No

20 Floor 2 - Patio



Dimensions: 7'6" x 5'5"
Area: 111 sq. ft
Counted as living area: No

Heated: No
Finished: Yes
Enclosed: No
Contiguous: Yes
Permitted: Yes
Wet space: No
Addition: No
Conversion: No

21 Floor 2 - Bath



Dimensions: 10'0" x 5'7"
Area: 56 sq. ft
Counted as living area: Yes

Heated: Yes
Finished: Yes
Enclosed: Yes
Contiguous: Yes
Permitted: Yes
Wet space: Yes
Addition: No
Conversion: No

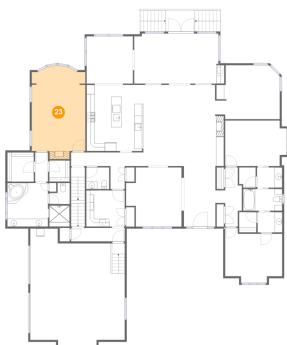
22 Floor 2 - Hall



Dimensions: 18'5" x 9'5"
Area: 87 sq. ft
Counted as living area: Yes

Heated: Yes
Finished: Yes
Enclosed: Yes
Contiguous: Yes
Permitted: Yes
Wet space: No
Addition: No
Conversion: No

23 Floor 2 - Primary Bedroom



Dimensions: 13'9" x 21'11"
Area: 298 sq. ft
Counted as living area: Yes

Heated: Yes
Finished: Yes
Enclosed: Yes
Contiguous: Yes
Permitted: Yes
Wet space: No
Addition: No
Conversion: No

24 Floor 2 - W.I.C.



Dimensions: 4'5" x 5'2"
Area: 23 sq. ft
Counted as living area: Yes

Heated: Yes
Finished: Yes
Enclosed: Yes
Contiguous: Yes
Permitted: Yes
Wet space: No
Addition: No
Conversion: No

25 Floor 2 - W.I.C.



Dimensions: 6'9" x 7'6"
Area: 51 sq. ft
Counted as living area: Yes

Heated: Yes
Finished: Yes
Enclosed: Yes
Contiguous: Yes
Permitted: Yes
Wet space: No
Addition: No
Conversion: No

26 Floor 2 - Hall



Dimensions: 3'4" x 7'6"
Area: 25 sq. ft
Counted as living area: Yes

Heated: Yes
Finished: Yes
Enclosed: Yes
Contiguous: Yes
Permitted: Yes
Wet space: No
Addition: No
Conversion: No

27 Floor 2 - Bath



Dimensions: 6'3" x 5'2"
Area: 33 sq. ft
Counted as living area: Yes

Heated: Yes
Finished: Yes
Enclosed: Yes
Contiguous: Yes
Permitted: Yes
Wet space: Yes
Addition: No
Conversion: No

28 Floor 2 - Garage



Dimensions: 24'2" x 28'5"
Area: 642 sq. ft
Counted as living area: No

Heated: No
Finished: No
Enclosed: Yes
Contiguous: Yes
Permitted: Yes
Wet space: No
Addition: No
Conversion: No

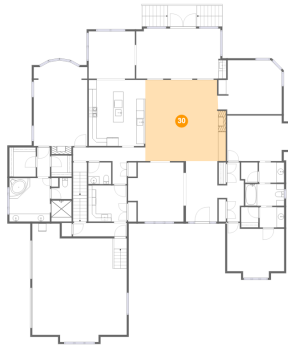
29 Floor 2 - WC



Dimensions: 5'3" x 5'5"
Area: 23 sq. ft
Counted as living area: Yes

Heated: Yes
Finished: Yes
Enclosed: Yes
Contiguous: Yes
Permitted: Yes
Wet space: No
Addition: No
Conversion: No

30 Floor 2 - Living Room



Dimensions: 20'7" x 20'9"
Area: 411 sq. ft
Counted as living area: Yes

Heated: Yes
Finished: Yes
Enclosed: Yes
Contiguous: Yes
Permitted: Yes
Wet space: No
Addition: No
Conversion: No

31 Floor 2 - Breakfast Area



Dimensions: 11'10" x 12'1"
Area: 143 sq. ft
Counted as living area: Yes

Heated: Yes
Finished: Yes
Enclosed: Yes
Contiguous: Yes
Permitted: Yes
Wet space: No
Addition: No
Conversion: No

32 Floor 2 - WC



Dimensions: 5'11" x 5'7"
Area: 33 sq. ft
Counted as living area: Yes

Heated: Yes
Finished: Yes
Enclosed: Yes
Contiguous: Yes
Permitted: Yes
Wet space: Yes
Addition: No
Conversion: No

33 Floor 2 - Primary Bath



Dimensions: 16'0" x 11'2"
Area: 145 sq. ft
Counted as living area: Yes

Heated: Yes
Finished: Yes
Enclosed: Yes
Contiguous: Yes
Permitted: Yes
Wet space: Yes
Addition: No
Conversion: No

34 Floor 2 - W.I.C.



Dimensions: 5'3" x 5'5"
Area: 28 sq. ft
Counted as living area: Yes

Heated: Yes
Finished: Yes
Enclosed: Yes
Contiguous: Yes
Permitted: Yes
Wet space: No
Addition: No
Conversion: No

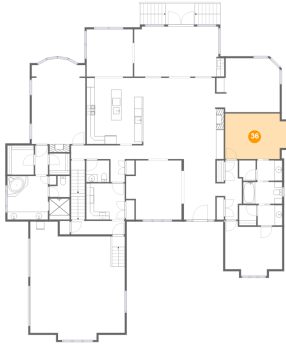
35 Floor 2 - Porch



Dimensions: 24'8" x 6'4"
Area: 156 sq. ft
Counted as living area: No

Heated: No
Finished: Yes
Enclosed: No
Contiguous: Yes
Permitted: Yes
Wet space: No
Addition: No
Conversion: No

36 Floor 2 - Bedroom



Dimensions: 15'9" x 11'8"
Area: 175 sq. ft
Counted as living area: Yes

Heated: Yes
Finished: Yes
Enclosed: Yes
Contiguous: Yes
Permitted: Yes
Wet space: No
Addition: No
Conversion: No

37 Floor 2 - Sunroom



Dimensions: 23'1" x 12'10"
Area: 287 sq. ft
Counted as living area: Yes

Heated: Yes
Finished: Yes
Enclosed: Yes
Contiguous: Yes
Permitted: Yes
Wet space: No
Addition: No
Conversion: No

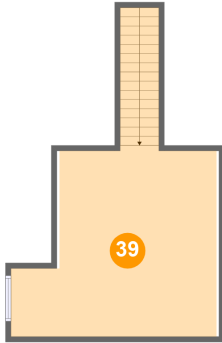
38 Floor 2 - Laundry



Dimensions: 9'10" x 9'3"
Area: 91 sq. ft
Counted as living area: Yes

Heated: Yes
Finished: Yes
Enclosed: Yes
Contiguous: Yes
Permitted: Yes
Wet space: No
Addition: No
Conversion: No

39 Floor 3 - Bonus Room



Dimensions: 19'2" x 17'7"
Area: 321 sq. ft
Counted as living area: Yes

Heated: Yes
Finished: Yes
Enclosed: Yes
Contiguous: Yes
Permitted: Yes
Wet space: No
Addition: No
Conversion: No