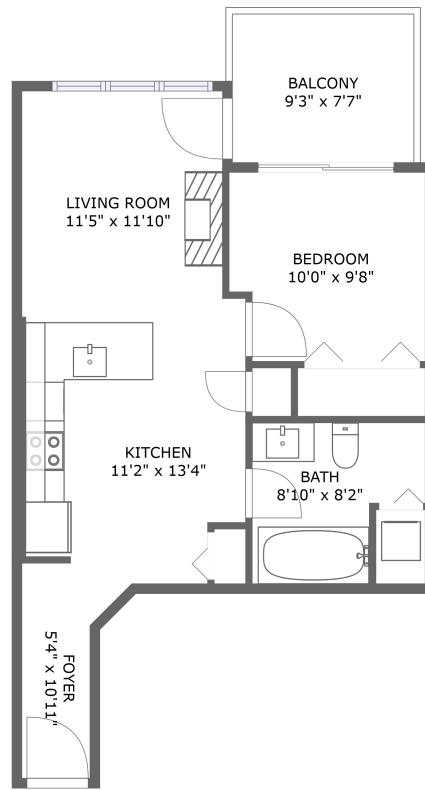



200 Inlet Private, Chatelaine Village, Orléans, Ontario, Canada, K4A 5S2, 407



FLOOR 1

Property summary


 **0** Garages


 **1** Bedrooms

 **1** Bathrooms

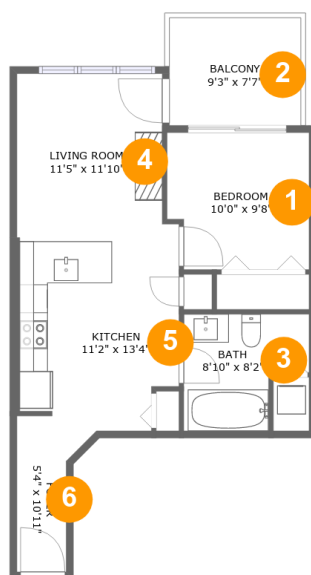
 **0** Half baths

 **1** Floors

 **508**
Gross living
area sqft

 **578**
Total sqft

200 Inlet Private, Chatelaine Village, Orléans, Ontario, Canada, K4A 5S2, 407



Room dimensions

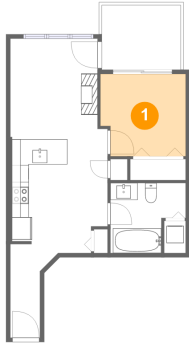
Floor 1

Total sqft: 578 Living area: 508

#		Dimensions	sqft	Counted as living area
1	Bedroom	10'0" x 9'8"	92 sq. ft	Yes
2	Balcony	9'3" x 7'7"	70 sq. ft	No
3	Bath	8'10" x 8'2"	61 sq. ft	Yes
4	Living Room	11'5" x 11'10"	122 sq. ft	Yes
5	Kitchen	11'2" x 13'4"	138 sq. ft	Yes
6	Foyer	5'4" x 10'11"	41 sq. ft	Yes

200 Inlet Private, Chatelaine Village, Orléans, Ontario, Canada, K4A 5S2, 407

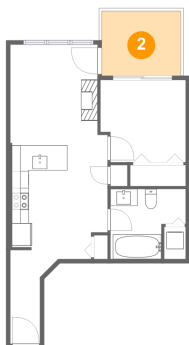
1 Floor 1 - Bedroom



Dimensions: 10'0" x 9'8"
Area: 92 sq. ft
Counted as living area: Yes

Heated: Yes
Finished: Yes
Enclosed: Yes
Contiguous: Yes
Permitted: Yes
Wet space: No
Addition: No
Conversion: No

2 Floor 1 - Balcony

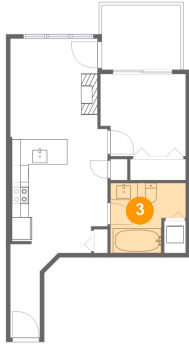


Dimensions: 9'3" x 7'7"
Area: 70 sq. ft
Counted as living area: No

Heated: No
Finished: Yes
Enclosed: No
Contiguous: Yes
Permitted: Yes
Wet space: No
Addition: No
Conversion: No

200 Inlet Private, Chatelaine Village, Orléans, Ontario, Canada, K4A 5S2, 407

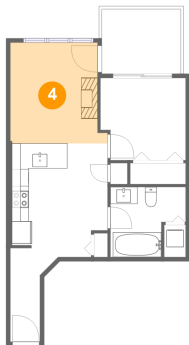
3 Floor 1 - Bath



Dimensions: 8'10" x 8'2"
Area: 61 sq. ft
Counted as living area: Yes

Heated: Yes
Finished: Yes
Enclosed: Yes
Contiguous: Yes
Permitted: Yes
Wet space: Yes
Addition: No
Conversion: No

4 Floor 1 - Living Room



Dimensions: 11'5" x 11'10"
Area: 122 sq. ft
Counted as living area: Yes

Heated: Yes
Finished: Yes
Enclosed: Yes
Contiguous: Yes
Permitted: Yes
Wet space: No
Addition: No
Conversion: No

5 Floor 1 - Kitchen

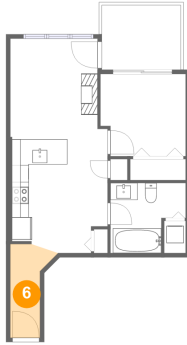


Dimensions: 11'2" x 13'4"
Area: 138 sq. ft
Counted as living area: Yes

Heated: Yes
Finished: Yes
Enclosed: Yes
Contiguous: Yes
Permitted: Yes
Wet space: No
Addition: No
Conversion: No

200 Inlet Private, Chatelaine Village, Orléans, Ontario, Canada, K4A 5S2, 407

6 Floor 1 - Foyer



Dimensions: 5'4" x 10'11"
Area: 41 sq. ft
Counted as living area: Yes

Heated: Yes
Finished: Yes
Enclosed: Yes
Contiguous: Yes
Permitted: Yes
Wet space: No
Addition: No
Conversion: No