



Home report


2030 Lexington Ct,Fort Collins,CO,US




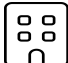
Property summary


**1** Garages


**4** Bedrooms

**2** Bathrooms

**1** Half baths

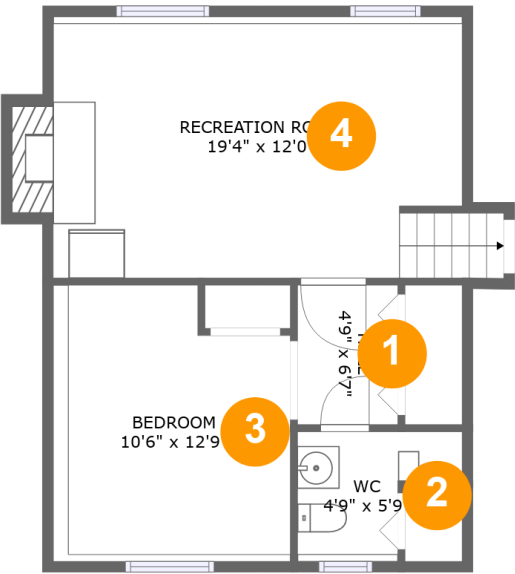
**3** Floors

**1,771** Gross living area sqft

**3,035** Total sqft

Home report

2030 Lexington Ct,Fort Collins,CO,US



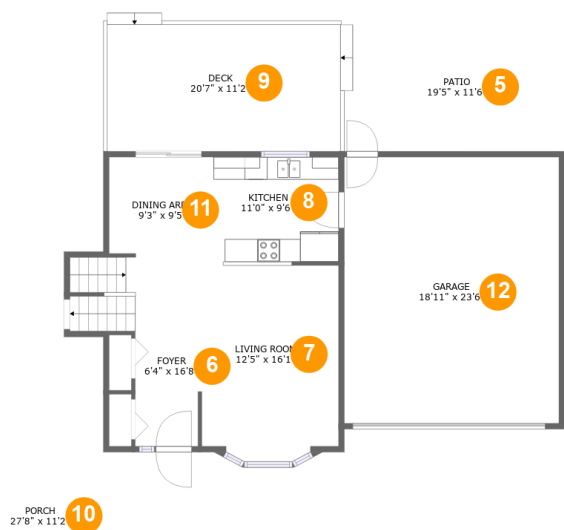
Room dimensions

Floor 1 Total sqft: 565    Living area: 553

#		Dimensions	sqft	Counted as living area
1	Hall	4'9" x 6'7"	31 sq. ft	Yes
2	WC	4'9" x 5'9"	36 sq. ft	Yes
3	Bedroom	10'6" x 12'9"	136 sq. ft	Yes
4	Recreation Room	19'4" x 12'0"	254 sq. ft	Yes

Home report

2030 Lexington Ct,Fort Collins,CO,US



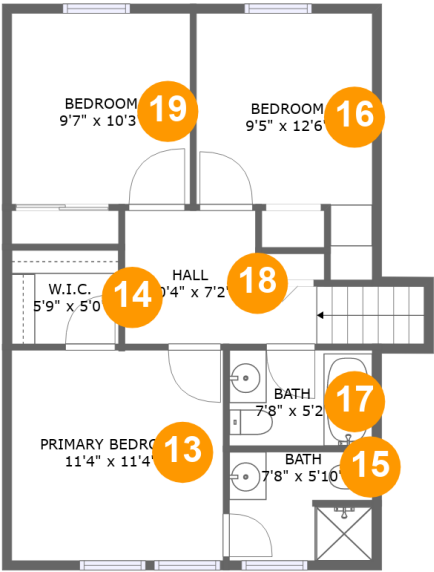
Room dimensions

Floor 2 Total sqft: 1841    Living area: 589

#		Dimensions	sqft	Counted as living area
5	Patio	19'5" x 11'6"	223 sq. ft	No
6	Foyer	6'4" x 16'8"	127 sq. ft	Yes
7	Living Room	12'5" x 16'1"	196 sq. ft	Yes
8	Kitchen	11'0" x 9'6"	104 sq. ft	Yes
9	Deck	20'7" x 11'2"	244 sq. ft	No
10	Porch	27'8" x 11'2"	302 sq. ft	No
11	Dining Area	9'3" x 9'5"	83 sq. ft	Yes
12	Garage	18'11" x 23'6"	444 sq. ft	No

Home report

2030 Lexington Ct,Fort Collins,CO,US

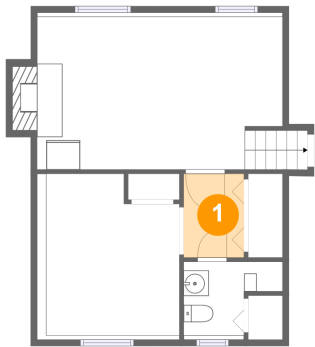


Room dimensions

Floor 3 Total sqft: 629 Living area: 629

#		Dimensions	sqft	Counted as living area
13	Primary Bedroom	11'4" x 11'4"	128 sq. ft	Yes
14	W.I.C.	5'9" x 5'0"	29 sq. ft	Yes
15	Bath	7'8" x 5'10"	44 sq. ft	Yes
16	Bedroom	9'5" x 12'6"	106 sq. ft	Yes
17	Bath	7'8" x 5'2"	39 sq. ft	Yes
18	Hall	10'4" x 7'2"	78 sq. ft	Yes
19	Bedroom	9'7" x 10'3"	98 sq. ft	Yes

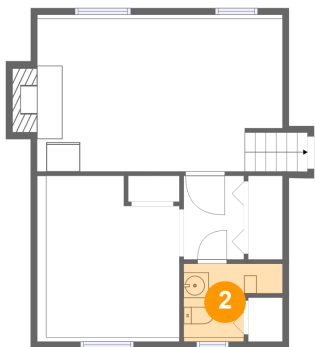
1 Floor 1 - Hall



Dimensions: 4'9" x 6'7"  
Area: 31 sq. ft  
Counted as living area: Yes

Heated: Yes  
Finished: Yes  
Enclosed: Yes  
Contiguous: Yes  
Permitted: Yes  
Wet space: No  
Addition: No  
Conversion: No

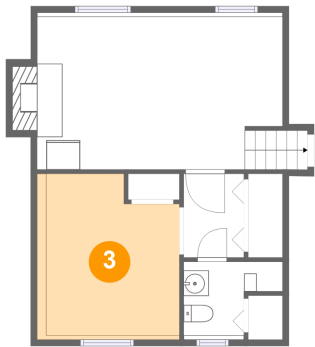
2 Floor 1 - WC



Dimensions: 4'9" x 5'9"  
Area: 36 sq. ft  
Counted as living area: Yes

Heated: Yes  
Finished: Yes  
Enclosed: Yes  
Contiguous: Yes  
Permitted: Yes  
Wet space: Yes  
Addition: No  
Conversion: No

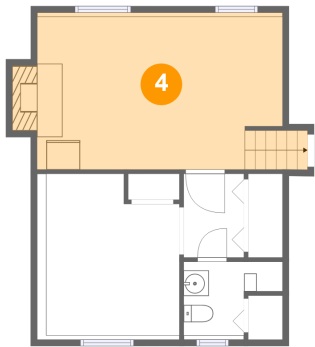
3 Floor 1 - Bedroom



Dimensions: 10'6" x 12'9"  
Area: 136 sq. ft  
Counted as living area: Yes

Heated: Yes  
Finished: Yes  
Enclosed: Yes  
Contiguous: Yes  
Permitted: Yes  
Wet space: No  
Addition: No  
Conversion: No

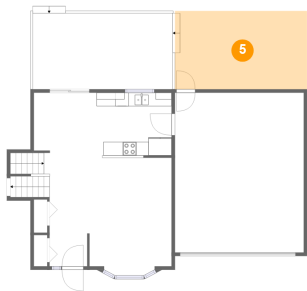
4 Floor 1 - Recreation Room



Dimensions: 19'4" x 12'0"  
Area: 254 sq. ft  
Counted as living area: Yes

Heated: Yes  
Finished: Yes  
Enclosed: Yes  
Contiguous: Yes  
Permitted: Yes  
Wet space: No  
Addition: No  
Conversion: No

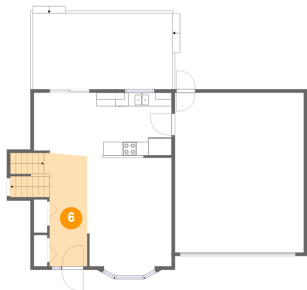
5 Floor 2 - Patio



Dimensions: 19'5" x 11'6"  
Area: 223 sq. ft  
Counted as living area: No

Heated: No  
Finished: Yes  
Enclosed: No  
Contiguous: Yes  
Permitted: Yes  
Wet space: No  
Addition: No  
Conversion: No

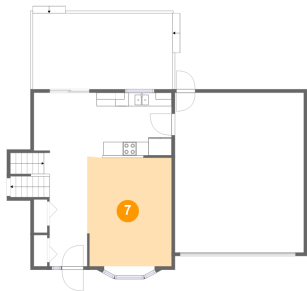
6 Floor 2 - Foyer



Dimensions: 6'4" x 16'8"  
Area: 127 sq. ft  
Counted as living area: Yes

Heated: Yes  
Finished: Yes  
Enclosed: Yes  
Contiguous: Yes  
Permitted: Yes  
Wet space: No  
Addition: No  
Conversion: No

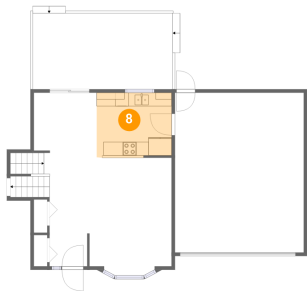
7 Floor 2 - Living Room



Dimensions: 12'5" x 16'1"  
Area: 196 sq. ft  
Counted as living area: Yes

Heated: Yes  
Finished: Yes  
Enclosed: Yes  
Contiguous: Yes  
Permitted: Yes  
Wet space: No  
Addition: No  
Conversion: No

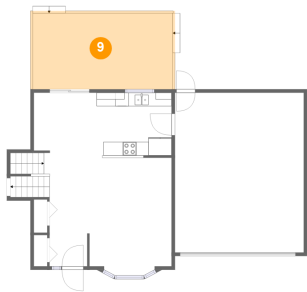
8 Floor 2 - Kitchen



Dimensions: 11'0" x 9'6"  
Area: 104 sq. ft  
Counted as living area: Yes

Heated: Yes  
Finished: Yes  
Enclosed: Yes  
Contiguous: Yes  
Permitted: Yes  
Wet space: No  
Addition: No  
Conversion: No

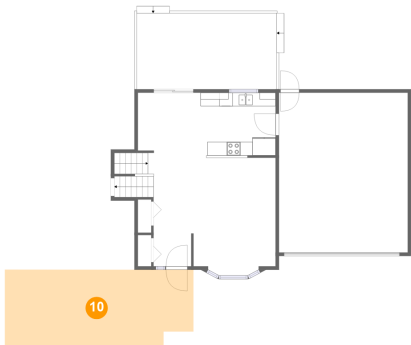
9 Floor 2 - Deck



Dimensions: 20'7" x 11'2"  
Area: 244 sq. ft  
Counted as living area: No

Heated: No  
Finished: Yes  
Enclosed: No  
Contiguous: Yes  
Permitted: Yes  
Wet space: No  
Addition: No  
Conversion: No

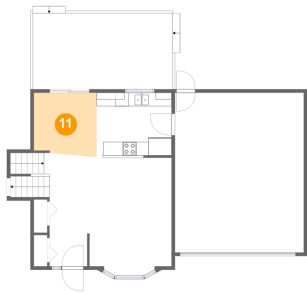
10 Floor 2 - Porch



Dimensions: 27'8" x 11'2"  
Area: 302 sq. ft  
Counted as living area: No

Heated: No  
Finished: Yes  
Enclosed: No  
Contiguous: Yes  
Permitted: Yes  
Wet space: No  
Addition: No  
Conversion: No

11 Floor 2 - Dining Area

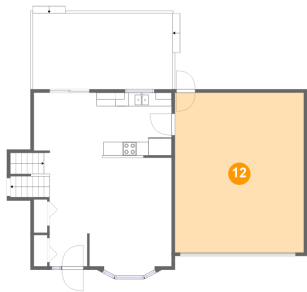


Dimensions: 9'3" x 9'5"  
Area: 83 sq. ft  
Counted as living area: Yes

Heated: Yes  
Finished: Yes  
Enclosed: Yes  
Contiguous: Yes  
Permitted: Yes  
Wet space: No  
Addition: No  
Conversion: No



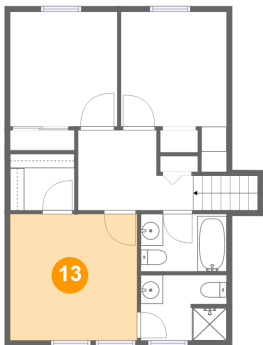
12 Floor 2 - Garage



Dimensions: 18'11" x 23'6"  
Area: 444 sq. ft  
Counted as living area: No

Heated: No  
Finished: No  
Enclosed: Yes  
Contiguous: Yes  
Permitted: Yes  
Wet space: No  
Addition: No  
Conversion: No

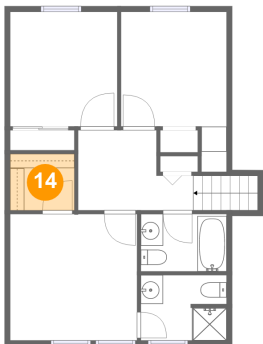
13 Floor 3 - Primary Bedroom



Dimensions: 11'4" x 11'4"  
Area: 128 sq. ft  
Counted as living area: Yes

Heated: Yes  
Finished: Yes  
Enclosed: Yes  
Contiguous: Yes  
Permitted: Yes  
Wet space: No  
Addition: No  
Conversion: No

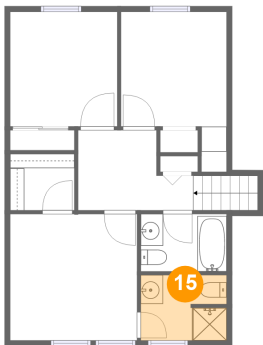
14 Floor 3 - W.I.C.



Dimensions: 5'9" x 5'0"  
Area: 29 sq. ft  
Counted as living area: Yes

Heated: Yes  
Finished: Yes  
Enclosed: Yes  
Contiguous: Yes  
Permitted: Yes  
Wet space: No  
Addition: No  
Conversion: No

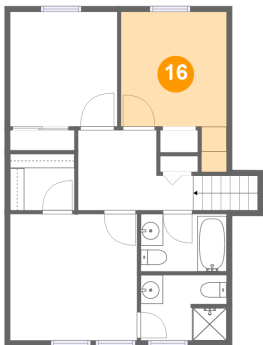
15 Floor 3 - Bath



Dimensions: 7'8" x 5'10"  
Area: 44 sq. ft  
Counted as living area: Yes

Heated: Yes  
Finished: Yes  
Enclosed: Yes  
Contiguous: Yes  
Permitted: Yes  
Wet space: Yes  
Addition: No  
Conversion: No

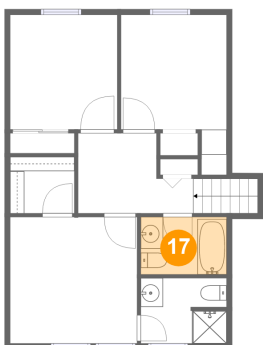
16 Floor 3 - Bedroom



Dimensions: 9'5" x 12'6"  
Area: 106 sq. ft  
Counted as living area: Yes

Heated: Yes  
Finished: Yes  
Enclosed: Yes  
Contiguous: Yes  
Permitted: Yes  
Wet space: No  
Addition: No  
Conversion: No

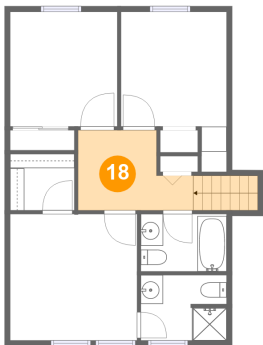
17 Floor 3 - Bath



Dimensions: 7'8" x 5'2"  
Area: 39 sq. ft  
Counted as living area: Yes

Heated: Yes  
Finished: Yes  
Enclosed: Yes  
Contiguous: Yes  
Permitted: Yes  
Wet space: Yes  
Addition: No  
Conversion: No

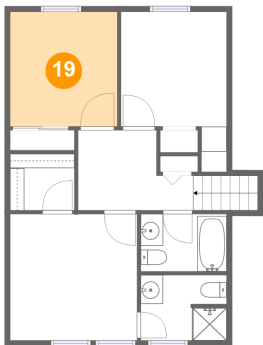
18 Floor 3 - Hall



Dimensions: 10'4" x 7'2"  
Area: 78 sq. ft  
Counted as living area: Yes

Heated: Yes  
Finished: Yes  
Enclosed: Yes  
Contiguous: Yes  
Permitted: Yes  
Wet space: No  
Addition: No  
Conversion: No

19 Floor 3 - Bedroom



Dimensions: 9'7" x 10'3"  
Area: 98 sq. ft  
Counted as living area: Yes

Heated: Yes  
Finished: Yes  
Enclosed: Yes  
Contiguous: Yes  
Permitted: Yes  
Wet space: No  
Addition: No  
Conversion: No