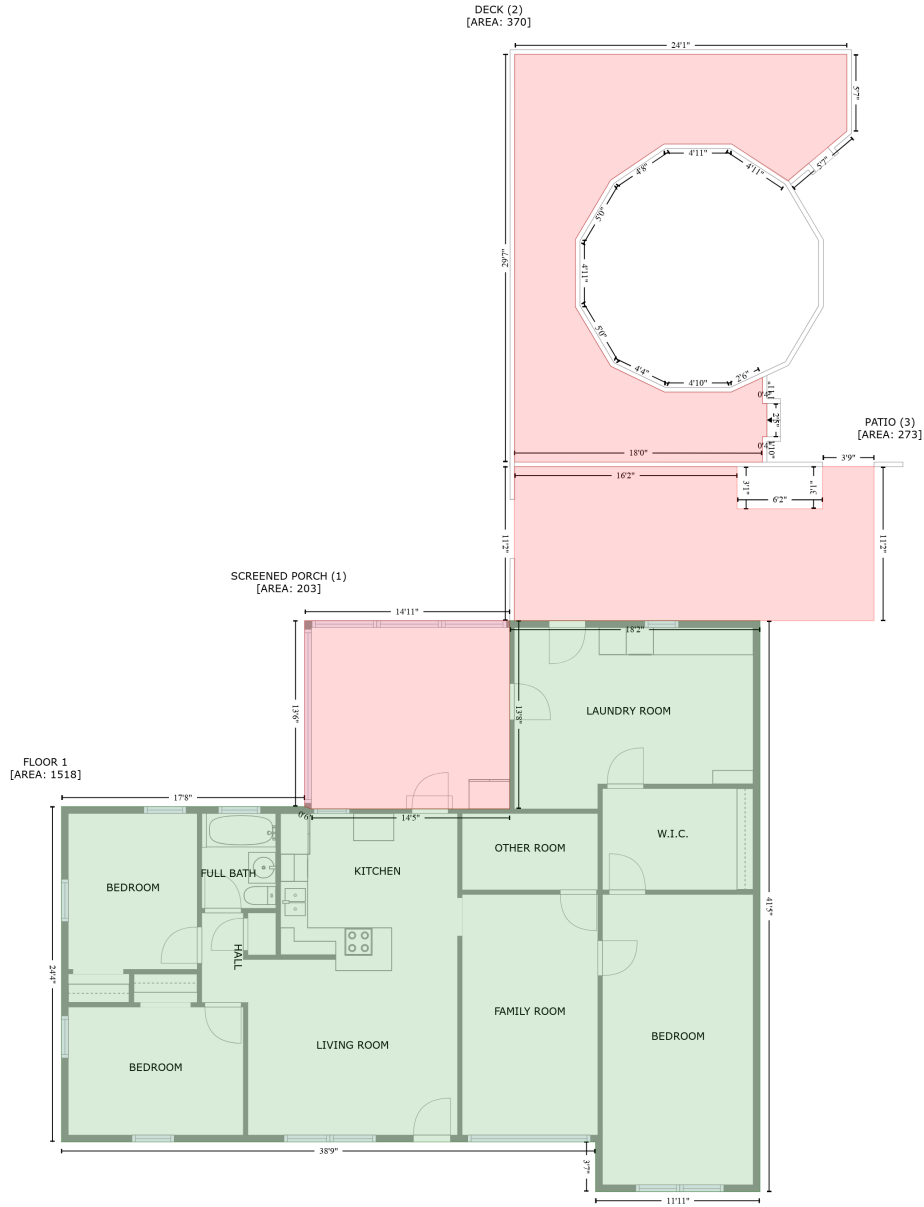


1238 Belleview Boulevard, Brookhill, Clearwater, Pinellas County, Florida, United States, 33756

Gross Living Area: 1518 sq. ft



Space	Area (sq. ft)	Calculation <small>Coordinate Polygon Area Algorithm using inches</small>
FLOOR 1 (Living area)	1518	$-\left((607.3 + 607.3) * (503.4 - 1000.5) + (607.3 + 464.1) * (1000.5 - 1000.5) + (464.1 + 464.1) * (1000.5 - 957.2) + (464.1 + -0.9) * (957.2 - 957.2) + (-0.9 + -0.9) * (957.2 - 665.3) + (-0.9 + 210.7) * (665.3 - 665.3) + (210.7 + 216.7) * (665.3 - 667.3) + (216.7 + 389.4) * (667.3 - 667.3) + (389.4 + 389.4) * (667.3 - 503.4) + (389.4 + 607.3) * (503.4 - 503.4)\right) * 0.5 * 0.00694$
SCREENED PORCH (Non-living area)	203	$-\left((389.4 + 389.4) * (503.4 - 667.3) + (389.4 + 216.7) * (667.3 - 667.3) + (216.7 + 210.7) * (667.3 - 665.3) + (210.7 + 210.7) * (665.3 - 503.4) + (210.7 + 389.4) * (503.4 - 503.4)\right) * 0.5 * 0.00694$

1238 Belleview Boulevard, Brookhill, Clearwater, Pinellas County, Florida, United States, 33756

Gross Living Area: 1518 sq. ft

Space	Area (sq. ft)	Calculation <small>Coordinate Polygon Area Algorithm using inches</small>
DECK (Non-living area)	370	$-\left((682.9 + 682.9) * (10.5 - 77.4) + (682.9 + 631.4) * (77.4 - 120.9) + (631.4 + 582.5) * (120.9 - 88.6) + (582.5 + 523.7) * (88.6 - 88.6) + (523.7 + 477.2) * (88.6 - 120) + (477.2 + 446.5) * (120 - 171.7) + (446.5 + 446.5) * (171.7 - 230.3) + (446.5 + 477.3) * (230.3 - 282) + (477.3 + 524) * (282 - 304.4) + (524 + 582.2) * (304.4 - 304.4) + (582.2 + 609.5) * (304.4 - 291.6) + (609.5 + 609.3) * (291.6 - 314.3) + (609.3 + 613.3) * (314.3 - 314.3) + (613.3 + 613.3) * (314.3 - 343.3) + (613.3 + 609.3) * (343.3 - 343.3) + (609.3 + 609.3) * (343.3 - 365.4) + (609.3 + 393.5) * (365.4 - 365.4) + (393.5 + 393.7) * (365.4 - 10.5) + (393.7 + 682.9) * (10.5 - 10.5)\right) * 0.5 * 0.00694$
PATIO (Non-living area)	273	$-\left((587.3 + 587.3) * (369.3 - 406.1) + (587.3 + 661.8) * (406.1 - 406.1) + (661.8 + 661.8) * (406.1 - 369.4) + (661.8 + 706.5) * (369.4 - 369.4) + (706.5 + 706.5) * (369.4 - 503.4) + (706.5 + 393.4) * (503.4 - 503.4) + (393.4 + 393.4) * (503.4 - 369.3) + (393.4 + 587.3) * (369.3 - 369.3)\right) * 0.5 * 0.00694$