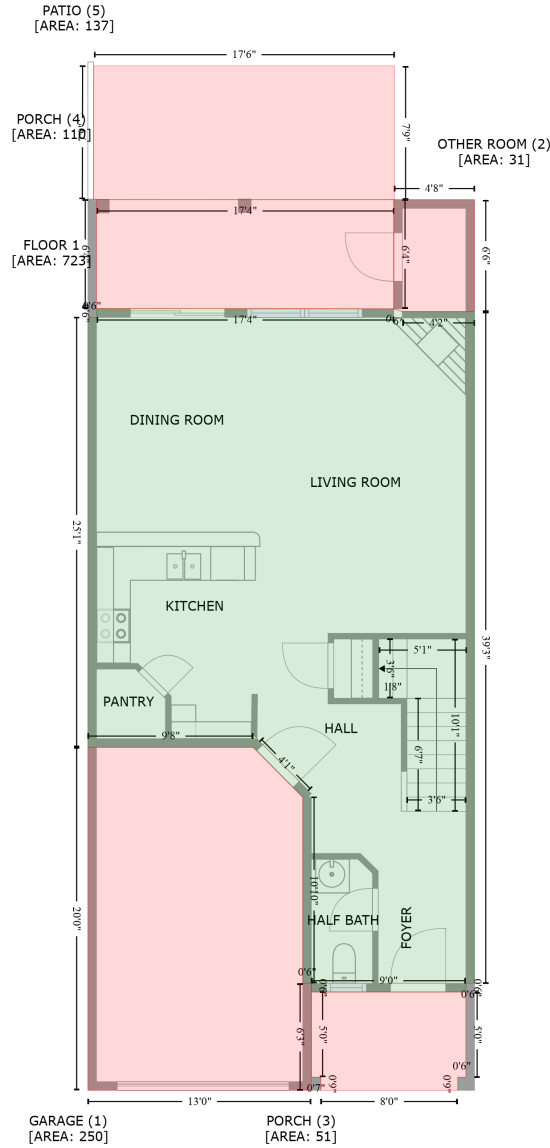


12653 Gallant Place, Wakefield Plantation, Raleigh, Wake County, North Carolina, United States, 27614

Gross Living Area: 1697 sq. ft



| Space | Area (sq. ft) | Calculation |
|--------------------------|---------------|--|
| FLOOR 1 (Living area) | 723 | Coordinate Polygon Area Algorithm using inches $-((277.1 + 283.1) * (259.4 - 261.4) + (283.1 + 333.6) * (261.4 - 261.4) + (333.6 + 333.6) * (261.4 - 731.9) + (333.6 + 327.6) * (731.9 - 731.9) + (327.6 + 327.6) * (731.9 - 737.9) + (327.6 + 219.4) * (737.9 - 737.9) + (219.4 + 219.4) * (737.9 - 731.9) + (219.4 + 213.4) * (731.9 - 731.9) + (213.4 + 213.4) * (731.9 - 601.4) + (213.4 + 178.8) * (601.4 - 566.5) + (178.8 + 63) * (566.5 - 566.5) + (63 + 63) * (566.5 - 265.4) + (63 + 69) * (265.4 - 265.4) + (69 + 69) * (265.4 - 259.4) + (69 + 277.1) * (259.4 - 259.4)) * 0.5 * 0.00694$ |

12653 Gallant Place, Wakefield Plantation, Raleigh, Wake County, North Carolina, United States, 27614

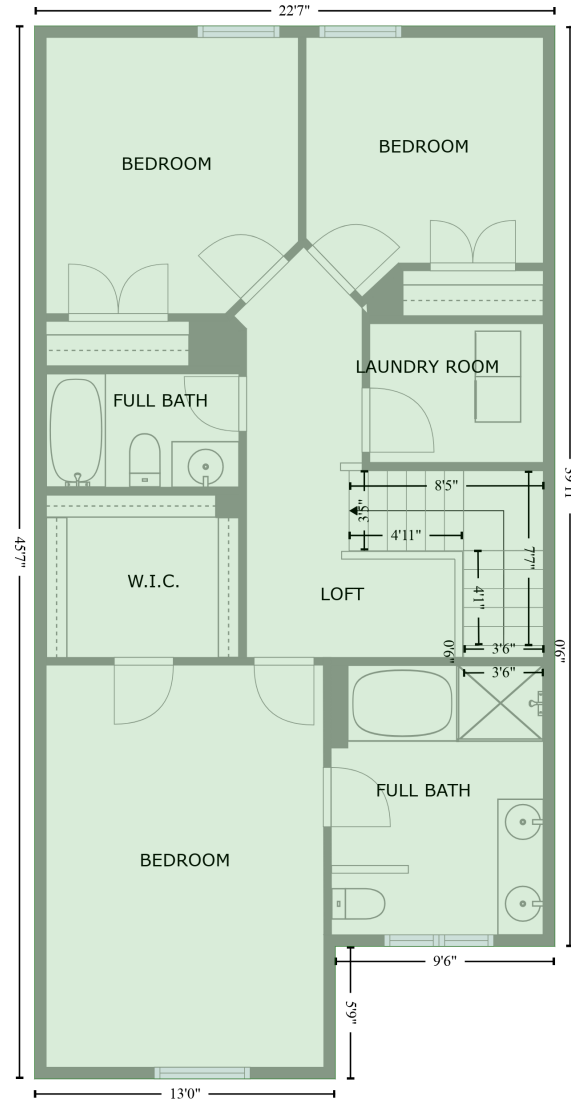
Gross Living Area: 1697 sq. ft

| Space | Area (sq. ft) | Calculation <small>Coordinate Polygon Area Algorithm using inches</small> |
|---------------------------------|---------------|--|
| GARAGE (Non-living area) | 250 | $-((178.8 + 213.4) * (566.5 - 601.4) + (213.4 + 213.4) * (601.4 - 731.9) + (213.4 + 219.4) * (731.9 - 731.9) + (219.4 + 219.4) * (731.9 - 806.8) + (219.4 + 63) * (806.8 - 806.8) + (63 + 63) * (806.8 - 566.5) + (63 + 178.8) * (566.5 - 566.5)) * 0.5 * 0.00694$ |
| OTHER ROOM (Non-living area) | 31 | $-((333.6 + 333.6) * (183 - 261.4) + (333.6 + 283.1) * (261.4 - 261.4) + (283.1 + 277.1) * (261.4 - 259.4) + (277.1 + 277.1) * (259.4 - 183) + (277.1 + 333.6) * (183 - 183)) * 0.5 * 0.00694$ |
| PORCH (Non-living area) | 51 | $-((327.5 + 327.5) * (737.9 - 797.7) + (327.5 + 321.8) * (797.7 - 797.6) + (321.8 + 321.8) * (797.6 - 806.8) + (321.8 + 226) * (806.8 - 806.8) + (226 + 226) * (806.8 - 797.6) + (226 + 219.4) * (797.6 - 797.6) + (219.4 + 219.4) * (797.6 - 737.9) + (219.4 + 327.5) * (737.9 - 737.9)) * 0.5 * 0.00694$ |
| PORCH (Non-living area) | 110 | $-((277.1 + 277.1) * (183 - 259.4) + (277.1 + 69) * (259.4 - 259) + (69 + 69) * (259 - 183) + (69 + 277.1) * (183 - 183)) * 0.5 * 0.00694$ |
| PATIO (Non-living area) | 137 | $-((277.5 + 277.5) * (89.2 - 182.7) + (277.5 + 67) * (182.7 - 182.7) + (67 + 67.1) * (182.7 - 89.2) + (67.1 + 277.5) * (89.2 - 89.2)) * 0.5 * 0.00694$ |

12653 Gallant Place, Wakefield Plantation, Raleigh, Wake County, North Carolina, United States, 27614

Gross Living Area: 1697 sq. ft

FLOOR 2
[AREA: 974]



| Space | Area (sq. ft) | Calculation <small>Coordinate Polygon Area Algorithm using inches</small> |
|--------------------------|---------------|---|
| FLOOR 2 (Living area) | 974 | $-\left((63 + 333.6) * (259.4 - 259.4) + (333.6 + 333.6) * (259.4 - 737.9) + (333.6 + 219.4) * (737.9 - 737.9) + (219.4 + 219.4) * (737.9 - 806.8) + (219.4 + 63) * (806.8 - 806.8) + (63 + 63) * (806.8 - 259.4)\right) * 0.5 * 0.00694$ |