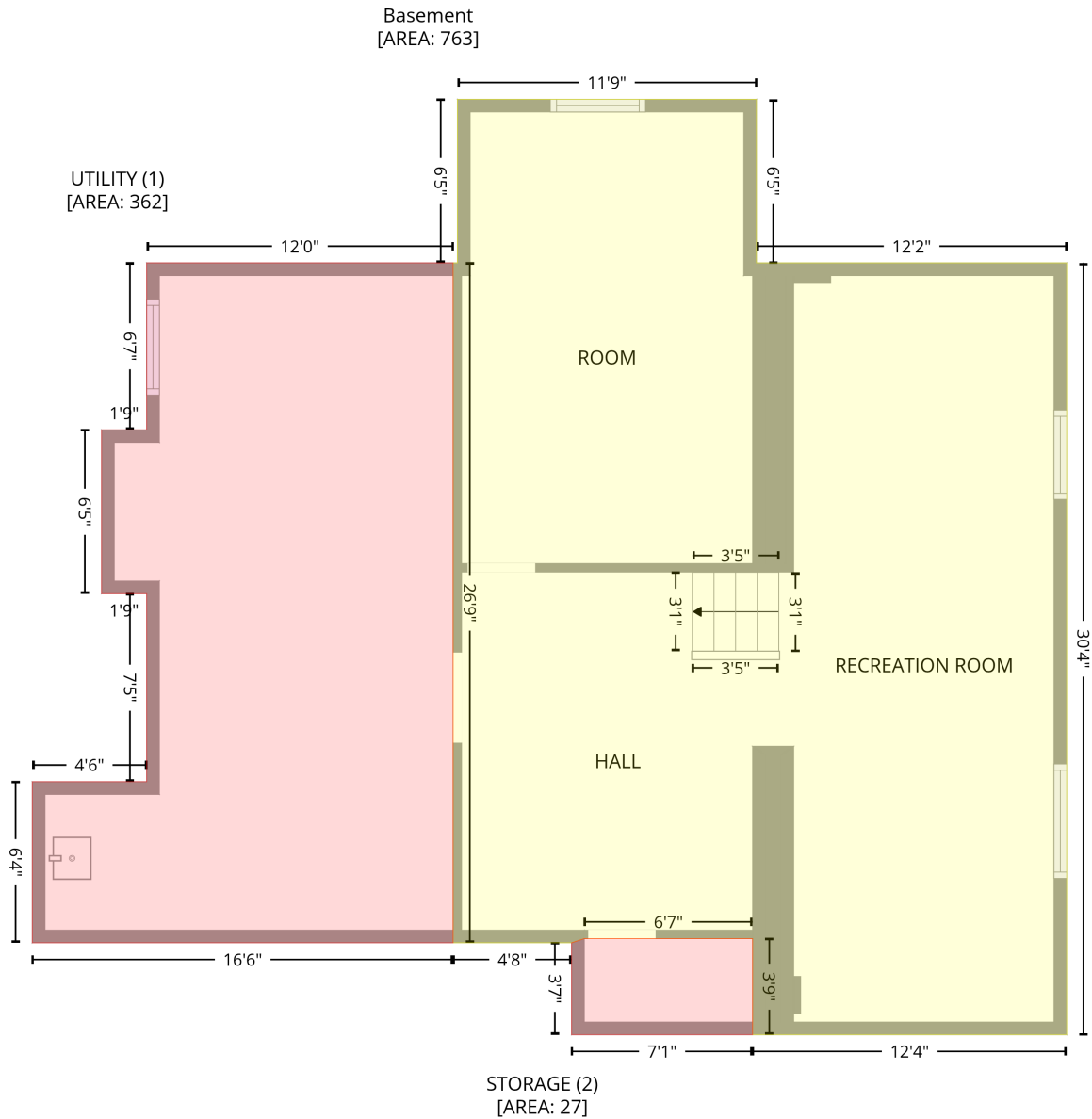


1054 Veroli Court, Lorne Park, Mississauga, Peel County, Ontario, Canada, L5H 4B9

Gross Living Area: 2263 sq. ft

Level 1 - Below Grade



Space	Area (sq. ft)	Calculation
Basement (Living area)	763	Coordinate Polygon Area Algorithm using inches $-((396.3 + 396.3) * (14.8 - 92) + (396.3 + 542.5) * (92 - 92) + (542.5 + 542.5) * (92 - 456) + (542.5 + 394.4) * (456 - 456) + (394.4 + 394.4) * (456 - 410.7) + (394.4 + 315.1) * (410.7 - 410.7) + (315.1 + 309.1) * (410.7 - 412.7) + (309.1 + 253.2) * (412.7 - 412.7) + (253.2 + 253.2) * (412.7 - 92) + (253.2 + 255.3) * (92 - 92) + (255.3 + 255.3) * (92 - 14.8) + (255.3 + 396.3) * (14.8 - 14.8)) * 0.5 * 0.00694$

1054 Veroli Court, Lorne Park, Mississauga, Peel County, Ontario, Canada, L5H 4B9

Gross Living Area: 2263 sq. ft

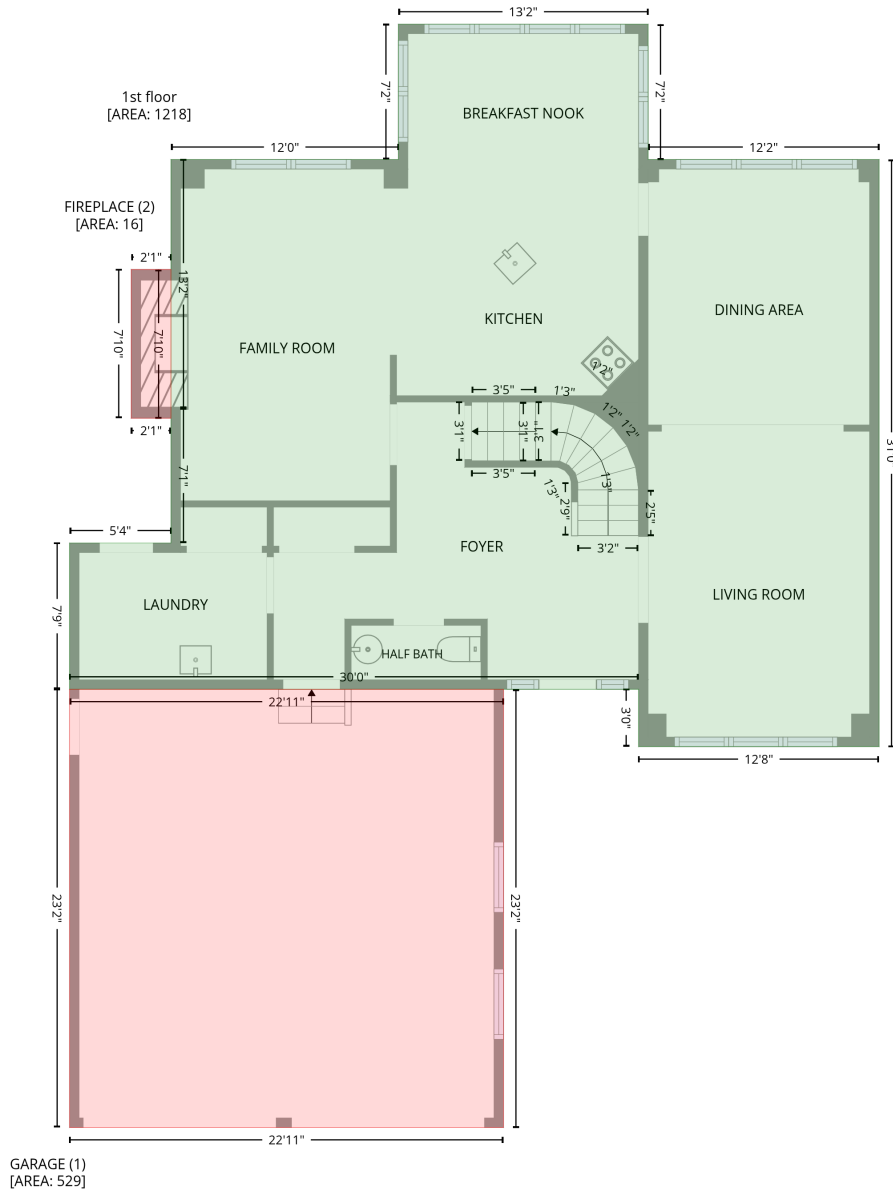
Level 1 - Below Grade

Space	Area (sq. ft)	Calculation <small>Coordinate Polygon Area Algorithm using inches</small>
UTILITY (Non-living area)	362	$-\left((253.2 + 253.2) * (92 - 412.7) + (253.2 + 54.9) * (412.7 - 412.7) + (54.9 + 54.9) * (412.7 - 336.7) + (54.9 + 108.8) * (336.7 - 336.7) + (108.8 + 108.8) * (336.7 - 248) + (108.8 + 87.5) * (248 - 248) + (87.5 + 87.5) * (248 - 170.7) + (87.5 + 108.8) * (170.7 - 170.7) + (108.8 + 108.8) * (170.7 - 92) + (108.8 + 253.2) * (92 - 92)\right) * 0.5 * 0.00694$
STORAGE (Non-living area)	27	$-\left((394.4 + 394.4) * (410.7 - 456) + (394.4 + 309.1) * (456 - 456) + (309.1 + 309.1) * (456 - 412.7) + (309.1 + 315.1) * (412.7 - 410.7) + (315.1 + 394.4) * (410.7 - 410.7)\right) * 0.5 * 0.00694$

1054 Veroli Court, Lorne Park, Mississauga, Peel County, Ontario, Canada, L5H 4B9

Gross Living Area: 2263 sq. ft

Level 2



Space	Area (sq. ft)	Calculation
1st floor (Living area)	1218	Coordinate Polygon Area Algorithm using inches $-((238.2 + 396.3) * (-1.5 - -1.5) + (396.3 + 396.3) * (-1.5 - 84.2) + (396.3 + 542.5) * (84.2 - 84.2) + (542.5 + 542.5) * (84.2 - 456) + (542.5 + 390.3) * (456 - 456) + (390.3 + 390.3) * (456 - 419.7) + (390.3 + 30) * (419.7 - 419.7) + (30 + 30) * (419.7 - 327.1) + (30 + 94.2) * (327.1 - 327.1) + (94.2 + 94.2) * (327.1 - 242) + (94.2 + 94.2) * (242 - 241.7) + (94.2 + 94.2) * (241.7 - 84.2) + (94.2 + 238.2) * (84.2 - 84.2) + (238.2 + 238.2) * (84.2 - -1.5)) * 0.5 * 0.00694$
GARAGE (Non-living area)	529	$-((304.7 + 304.7) * (419.7 - 697.2) + (304.7 + 30) * (697.2 - 697.2) + (30 + 30) * (697.2 - 419.7) + (30 + 304.7) * (419.7 - 419.7)) * 0.5 * 0.00694$

1054 Veroli Court, Lorne Park, Mississauga, Peel County, Ontario, Canada, L5H 4B9

Gross Living Area: 2263 sq. ft

Level 2

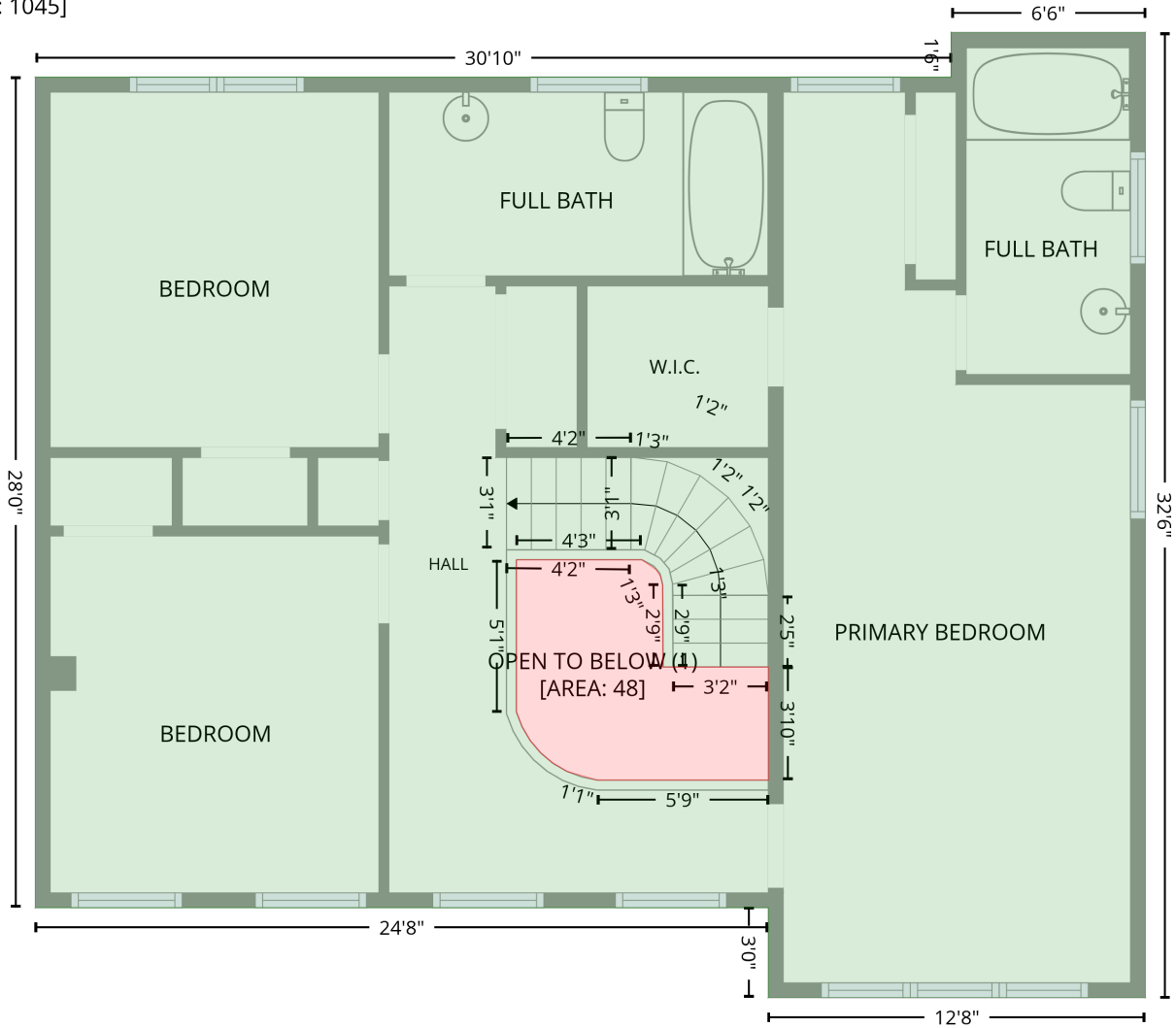
Space	Area (sq. ft)	Calculation <small>Coordinate Polygon Area Algorithm using inches</small>
FIREPLACE (Non-living area)	16	$-\left((94.2 + 94.2) * (153.8 - 248) + (94.2 + 69) * (248 - 248) + (69 + 69) * (248 - 153.8) + (69 + 94.2) * (153.8 - 153.8)\right) * 0.5 * 0.00694$

1054 Veroli Court, Lorne Park, Mississauga, Peel County, Ontario, Canada, L5H 4B9

Gross Living Area: 2263 sq. ft

Level 3

2nd floor
[AREA: 1045]



Space	Area (sq. ft)	Calculation <small>Coordinate Polygon Area Algorithm using inches</small>
2nd floor (Living area)	1045	$ \begin{aligned} & -((542.5 + 542.5) * (66 - 456) + (542.5 + 390.3) * (456 - 456) + (390.3 + 390.3) * (456 - 419.7) + \\ & (390.3 + 94.2) * (419.7 - 419.7) + (94.2 + 94.2) * (419.7 - 84.2) + (94.2 + 464.1) * (84.2 - 84.2) + \\ & (464.1 + 464.1) * (84.2 - 66) + (464.1 + 542.5) * (66 - 66)) * 0.5 * 0.00694 + -((339.2 + 288.5) * \\ & (279.1 - 279.1) + (288.5 + 288.5) * (279.1 - 340.6) + (288.5 + 290.8) * (340.6 - 346.6) + (290.8 + \\ & 293.9) * (346.6 - 352) + (293.9 + 298.1) * (352 - 356.9) + (298.1 + 303) * (356.9 - 361.1) + (303 + \\ & 308.9) * (361.1 - 364.6) + (308.9 + 321) * (364.6 - 368.1) + (321 + 390.3) * (368.1 - 368.1) + \\ & (390.3 + 390.3) * (368.1 - 322.4) + (390.3 + 347.8) * (322.4 - 322.4) + (347.8 + 347.6) * (322.4 - \\ & 289.2) + (347.6 + 346.8) * (289.2 - 285.9) + (346.8 + 344.9) * (285.9 - 283.1) + (344.9 + 339.2) * \\ & (283.1 - 279.1)) * 0.5 * 0.00694 \end{aligned} $

1054 Veroli Court, Lorne Park, Mississauga, Peel County, Ontario, Canada, L5H 4B9

Gross Living Area: 2263 sq. ft

Level 3

Space	Area (sq. ft)	Calculation <small>Coordinate Polygon Area Algorithm using inches</small>
OPEN TO BELOW (Non-living area)	48	$\begin{aligned} & -((339.2 + 344.9) * (279.1 - 283.1) + (344.9 + 346.8) * (283.1 - 285.9) + (346.8 + 347.6) * (285.9 - \\ & 289.2) + (347.6 + 347.8) * (289.2 - 322.4) + (347.8 + 390.3) * (322.4 - 322.4) + (390.3 + 390.3) * \\ & (322.4 - 368.1) + (390.3 + 321) * (368.1 - 368.1) + (321 + 308.9) * (368.1 - 364.6) + (308.9 + 303) \\ & * (364.6 - 361.1) + (303 + 298.1) * (361.1 - 356.9) + (298.1 + 293.9) * (356.9 - 352) + (293.9 + \\ & 290.8) * (352 - 346.6) + (290.8 + 288.5) * (346.6 - 340.6) + (288.5 + 288.5) * (340.6 - 279.1) + \\ & (288.5 + 339.2) * (279.1 - 279.1)) * 0.5 * 0.00694 \end{aligned}$