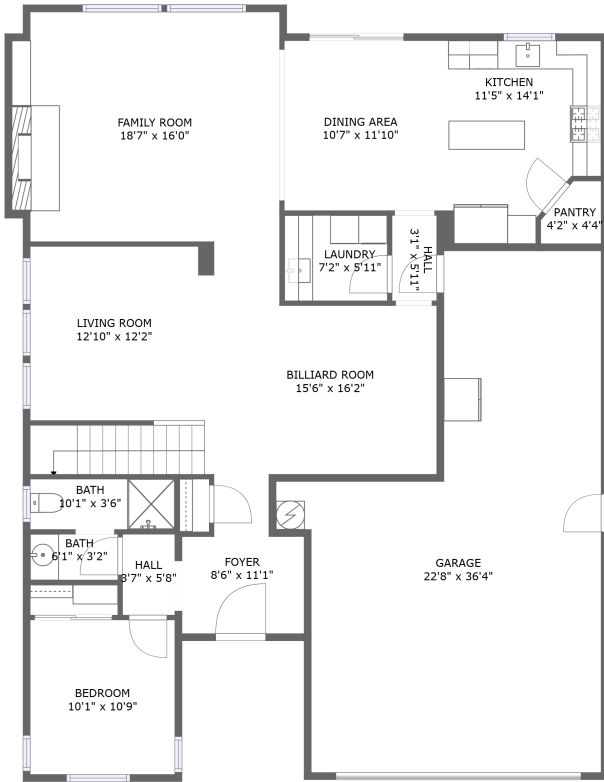
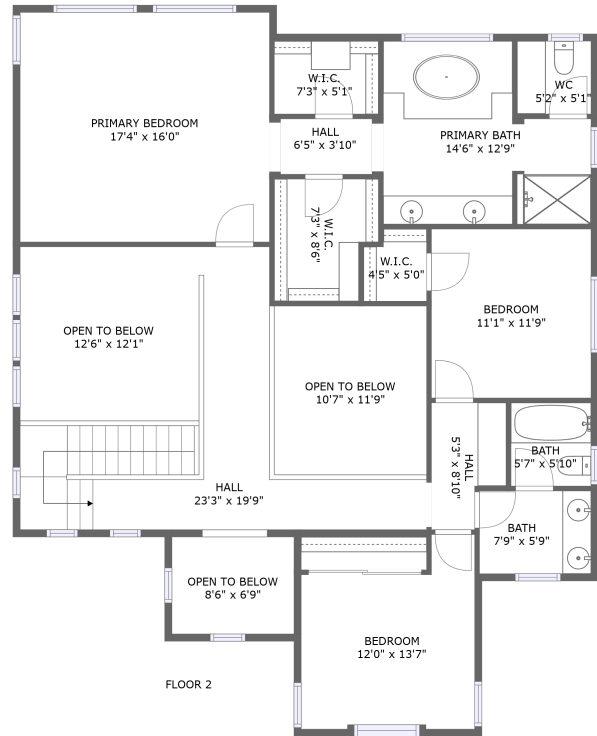


4030 Borders Drive, Serrano Village, El Dorado Hills, El Dorado County, California, United



FLOOR 1



FLOOR 2

Property Summary



2 floors



4 bedrooms



3 bathrooms



3,828 total sqft

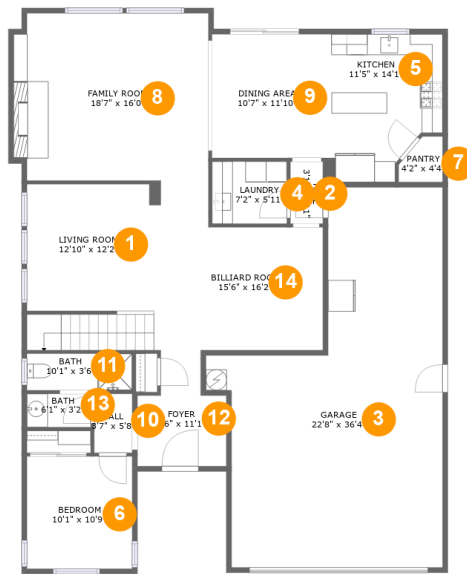


1 garages



2,855 Gross Living Area sqft

4030 Borders Drive, Serrano Village, El Dorado Hills, El Dorado County, California, United



Room Dimensions

Floor 1

Total sqft: 2091

Living area: 1464

#	Room name	Dimensions	Area (sqft)	Counted as Living Area
1	Living Room	12'10" x 12'2"	198 sq. ft	Yes
2	Hall	3'1" x 5'11"	19 sq. ft	Yes
3	Garage	22'8" x 36'4"	593 sq. ft	No
4	Laundry	7'2" x 5'11"	43 sq. ft	Yes
5	Kitchen	11'5" x 14'1"	141 sq. ft	Yes
6	Bedroom	10'1" x 10'9"	108 sq. ft	Yes
7	Pantry	4'2" x 4'4"	15 sq. ft	Yes
8	Family Room	18'7" x 16'0"	293 sq. ft	Yes
9	Dining Area	10'7" x 11'10"	126 sq. ft	Yes
10	Hall	3'7" x 5'8"	21 sq. ft	Yes
11	Bath	10'1" x 3'6"	35 sq. ft	Yes

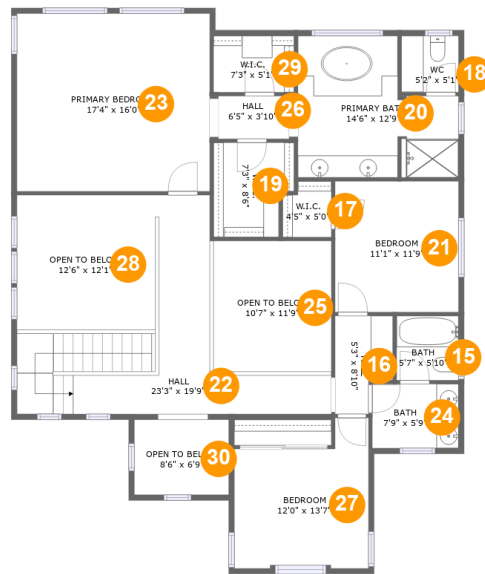
Scan captured on Mon, 27 May 2024 00:13:08 GMT

Information is calculated by CubiCasa technology; deemed highly reliable but not guaranteed.

4030 Borders Drive, Serrano Village, El Dorado Hills, El Dorado County, California, United

#	Room name	Dimensions	Area (sqft)	Counted as Living Area
12	Foyer	8'6" x 11'1"	74 sq. ft	Yes
13	Bath	6'1" x 3'2"	19 sq. ft	Yes
14	Billiard Room	15'6" x 16'2"	203 sq. ft	Yes

4030 Borders Drive, Serrano Village, El Dorado Hills, El Dorado County, California, United



Room Dimensions

Floor 2

Total sqft: 1737

Living area: 1391

#	Room name	Dimensions	Area (sqft)	Counted as Living Area
15	Bath	5'7" x 5'10"	32 sq. ft	Yes
16	Hall	5'3" x 8'10"	39 sq. ft	Yes
17	W.i.c.	4'5" x 5'0"	20 sq. ft	Yes
18	Wc	5'2" x 5'1"	26 sq. ft	Yes
19	W.i.c.	7'3" x 8'6"	56 sq. ft	Yes
20	Primary Bath	14'6" x 12'9"	153 sq. ft	Yes
21	Bedroom	11'1" x 11'9"	131 sq. ft	Yes
22	Hall	23'3" x 19'9"	241 sq. ft	Yes
23	Primary Bedroom	17'4" x 16'0"	278 sq. ft	Yes
24	Bath	7'9" x 5'9"	45 sq. ft	Yes
25	Open To Below	10'7" x 11'9"	125 sq. ft	No

Scan captured on Mon, 27 May 2024 00:13:08 GMT

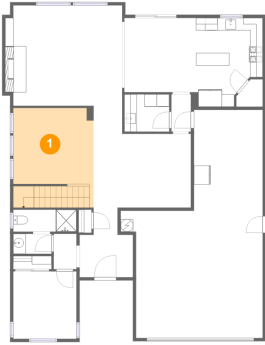
Information is calculated by CubiCasa technology; deemed highly reliable but not guaranteed.

4030 Borders Drive, Serrano Village, El Dorado Hills, El Dorado County, California, United

#	Room name	Dimensions	Area (sqft)	Counted as Living Area
26	Hall	6'5" x 3'10"	25 sq. ft	Yes
27	Bedroom	12'0" x 13'7"	137 sq. ft	Yes
28	Open To Below	12'6" x 12'1"	150 sq. ft	No
29	W.i.c.	7'3" x 5'1"	37 sq. ft	Yes
30	Open To Below	8'6" x 6'9"	58 sq. ft	No

4030 Borders Drive, Serrano Village, El Dorado Hills, El Dorado County, California, United

1 Floor 1 - Living Room



Dimensions: 12'10" x 12'2"
Area: 198 sq. ft
Counted as Living Area:
Yes

Heated: Yes
Finished: Yes
Enclosed: Yes
Contiguous:
Yes
Permitted: Yes
Wet Space: No
Addition: No
Conversion: No

2 Floor 1 - Hall

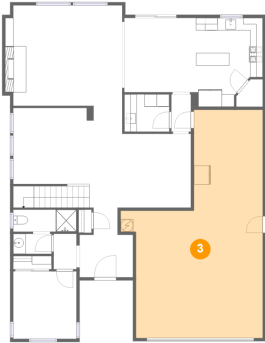


Dimensions: 3'1" x 5'11"
Area: 19 sq. ft
Counted as Living Area:
Yes

Heated: Yes
Finished: Yes
Enclosed: Yes
Contiguous:
Yes
Permitted: Yes
Wet Space: No
Addition: No
Conversion: No

4030 Borders Drive, Serrano Village, El Dorado Hills, El Dorado County, California, United

3 Floor 1 - Garage



Dimensions: 22'8" x 36'4"
Area: 593 sq. ft
Counted as Living Area: No

Heated: No
Finished: No
Enclosed: Yes
Contiguous: Yes
Permitted: Yes
Wet Space: No
Addition: No
Conversion: No

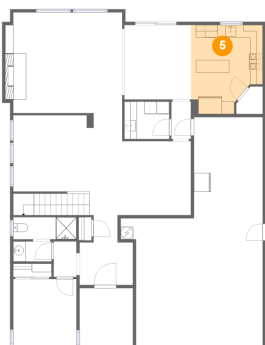
4 Floor 1 - Laundry



Dimensions: 7'2" x 5'11"
Area: 43 sq. ft
Counted as Living Area: Yes

Heated: Yes
Finished: Yes
Enclosed: Yes
Contiguous: Yes
Permitted: Yes
Wet Space: No
Addition: No
Conversion: No

5 Floor 1 - Kitchen



Dimensions: 11'5" x 14'1"
Area: 141 sq. ft
Counted as Living Area: Yes

Heated: Yes
Finished: Yes
Enclosed: Yes
Contiguous: Yes
Permitted: Yes
Wet Space: No
Addition: No
Conversion: No

4030 Borders Drive, Serrano Village, El Dorado Hills, El Dorado County, California, United

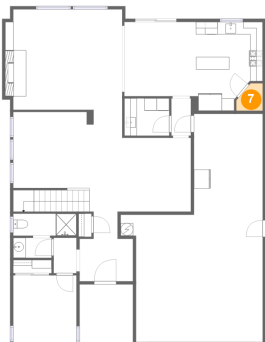
6 Floor 1 - Bedroom



Dimensions: 10'1" x 10'9"
Area: 108 sq. ft
Counted as Living Area:
Yes

Heated: Yes
Finished: Yes
Enclosed: Yes
Contiguous:
Yes
Permitted: Yes
Wet Space: No
Addition: No
Conversion: No

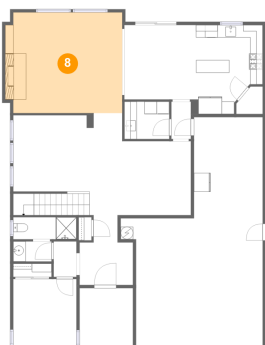
7 Floor 1 - Pantry



Dimensions: 4'2" x 4'4"
Area: 15 sq. ft
Counted as Living Area:
Yes

Heated: Yes
Finished: Yes
Enclosed: Yes
Contiguous:
Yes
Permitted: Yes
Wet Space: No
Addition: No
Conversion: No

8 Floor 1 - Family Room

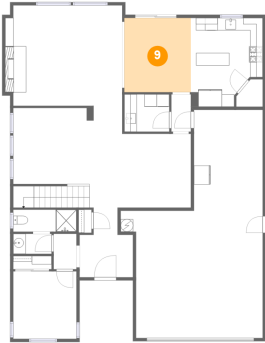


Dimensions: 18'7" x 16'0"
Area: 293 sq. ft
Counted as Living Area:
Yes

Heated: Yes
Finished: Yes
Enclosed: Yes
Contiguous:
Yes
Permitted: Yes
Wet Space: No
Addition: No
Conversion: No

4030 Borders Drive, Serrano Village, El Dorado Hills, El Dorado County, California, United

9 Floor 1 - Dining Area



Dimensions: 10'7" x 11'10"
Area: 126 sq. ft
Counted as Living Area:
Yes

Heated: Yes
Finished: Yes
Enclosed: Yes
Contiguous:
Yes
Permitted: Yes
Wet Space: No
Addition: No
Conversion: No

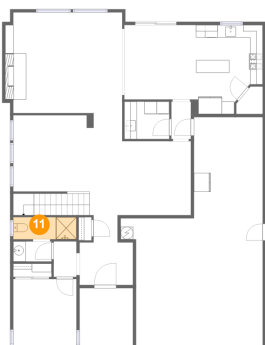
10 Floor 1 - Hall



Dimensions: 3'7" x 5'8"
Area: 21 sq. ft
Counted as Living Area:
Yes

Heated: Yes
Finished: Yes
Enclosed: Yes
Contiguous:
Yes
Permitted: Yes
Wet Space: No
Addition: No
Conversion: No

11 Floor 1 - Bath

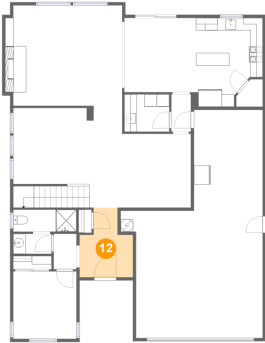


Dimensions: 10'1" x 3'6"
Area: 35 sq. ft
Counted as Living Area:
Yes

Heated: Yes
Finished: Yes
Enclosed: Yes
Contiguous:
Yes
Permitted: Yes
Wet Space: Yes
Addition: No
Conversion: No

4030 Borders Drive, Serrano Village, El Dorado Hills, El Dorado County, California, United

12 Floor 1 - Foyer



Dimensions: 8'6" x 11'1"
Area: 74 sq. ft
Counted as Living Area:
Yes

Heated: Yes
Finished: Yes
Enclosed: Yes
Contiguous:
Yes
Permitted: Yes
Wet Space: No
Addition: No
Conversion: No

13 Floor 1 - Bath



Dimensions: 6'1" x 3'2"
Area: 19 sq. ft
Counted as Living Area:
Yes

Heated: Yes
Finished: Yes
Enclosed: Yes
Contiguous:
Yes
Permitted: Yes
Wet Space: Yes
Addition: No
Conversion: No

14 Floor 1 - Billiard Room

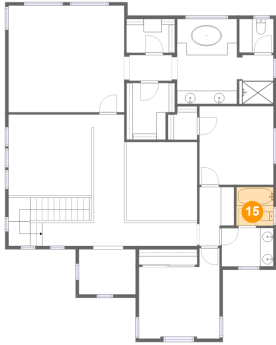


Dimensions: 15'6" x 16'2"
Area: 203 sq. ft
Counted as Living Area:
Yes

Heated: Yes
Finished: Yes
Enclosed: Yes
Contiguous:
Yes
Permitted: Yes
Wet Space: No
Addition: No
Conversion: No

4030 Borders Drive, Serrano Village, El Dorado Hills, El Dorado County, California, United

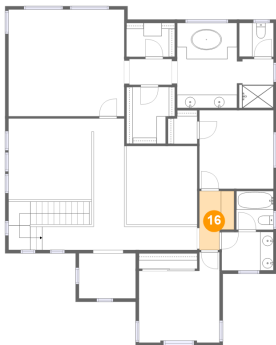
15 Floor 2 - Bath



Dimensions: 5'7" x 5'10"
Area: 32 sq. ft
Counted as Living Area:
Yes

Heated: Yes
Finished: Yes
Enclosed: Yes
Contiguous:
Yes
Permitted: Yes
Wet Space: Yes
Addition: No
Conversion: No

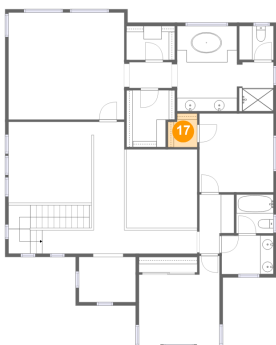
16 Floor 2 - Hall



Dimensions: 5'3" x 8'10"
Area: 39 sq. ft
Counted as Living Area:
Yes

Heated: Yes
Finished: Yes
Enclosed: Yes
Contiguous:
Yes
Permitted: Yes
Wet Space: No
Addition: No
Conversion: No

17 Floor 2 - W.i.c.

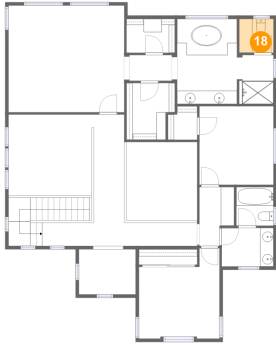


Dimensions: 4'5" x 5'0"
Area: 20 sq. ft
Counted as Living Area:
Yes

Heated: Yes
Finished: Yes
Enclosed: Yes
Contiguous:
Yes
Permitted: Yes
Wet Space: No
Addition: No
Conversion: No

4030 Borders Drive, Serrano Village, El Dorado Hills, El Dorado County, California, United

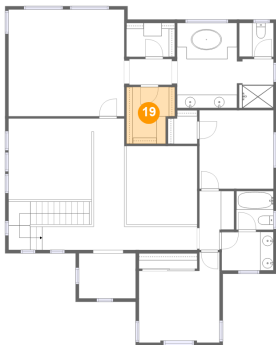
18 Floor 2 - Wc



Dimensions: 5'2" x 5'1"
Area: 26 sq. ft
Counted as Living Area:
Yes

Heated: Yes
Finished: Yes
Enclosed: Yes
Contiguous:
Yes
Permitted: Yes
Wet Space: Yes
Addition: No
Conversion: No

19 Floor 2 - W.i.c.



Dimensions: 7'3" x 8'6"
Area: 56 sq. ft
Counted as Living Area:
Yes

Heated: Yes
Finished: Yes
Enclosed: Yes
Contiguous:
Yes
Permitted: Yes
Wet Space: No
Addition: No
Conversion: No

20 Floor 2 - Primary Bath

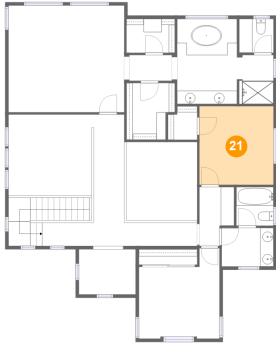


Dimensions: 14'6" x 12'9"
Area: 153 sq. ft
Counted as Living Area:
Yes

Heated: Yes
Finished: Yes
Enclosed: Yes
Contiguous:
Yes
Permitted: Yes
Wet Space: Yes
Addition: No
Conversion: No

4030 Borders Drive, Serrano Village, El Dorado Hills, El Dorado County, California, United

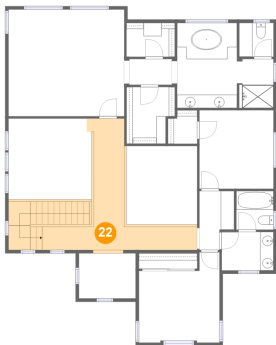
21 Floor 2 - Bedroom



Dimensions: 11'1" x 11'9"
Area: 131 sq. ft
Counted as Living Area:
Yes

Heated: Yes
Finished: Yes
Enclosed: Yes
Contiguous:
Yes
Permitted: Yes
Wet Space: No
Addition: No
Conversion: No

22 Floor 2 - Hall



Dimensions: 23'3" x 19'9"
Area: 241 sq. ft
Counted as Living Area:
Yes

Heated: Yes
Finished: Yes
Enclosed: Yes
Contiguous:
Yes
Permitted: Yes
Wet Space: No
Addition: No
Conversion: No

23 Floor 2 - Primary Bedroom

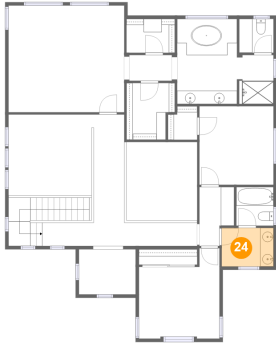


Dimensions: 17'4" x 16'0"
Area: 278 sq. ft
Counted as Living Area:
Yes

Heated: Yes
Finished: Yes
Enclosed: Yes
Contiguous:
Yes
Permitted: Yes
Wet Space: No
Addition: No
Conversion: No

4030 Borders Drive, Serrano Village, El Dorado Hills, El Dorado County, California, United

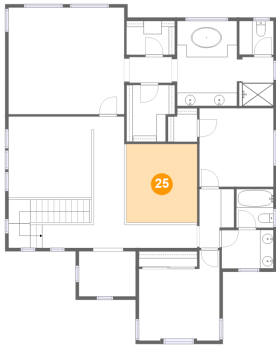
24 Floor 2 - Bath



Dimensions: 7'9" x 5'9"
Area: 45 sq. ft
Counted as Living Area:
Yes

Heated: Yes
Finished: Yes
Enclosed: Yes
Contiguous:
Yes
Permitted: Yes
Wet Space: Yes
Addition: No
Conversion: No

25 Floor 2 - Open To Below



Dimensions: 10'7" x 11'9"
Area: 125 sq. ft
Counted as Living Area: No

Heated: No
Finished: No
Enclosed: No
Contiguous: Yes
Permitted: No
Wet Space: No
Addition: No
Conversion: No

26 Floor 2 - Hall

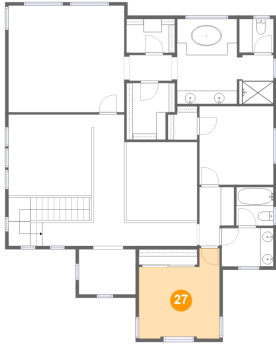


Dimensions: 6'5" x 3'10"
Area: 25 sq. ft
Counted as Living Area:
Yes

Heated: Yes
Finished: Yes
Enclosed: Yes
Contiguous:
Yes
Permitted: Yes
Wet Space: No
Addition: No
Conversion: No

4030 Borders Drive, Serrano Village, El Dorado Hills, El Dorado County, California, United

27 Floor 2 - Bedroom



Dimensions: 12'0" x 13'7"
Area: 137 sq. ft
Counted as Living Area:
Yes

Heated: Yes
Finished: Yes
Enclosed: Yes
Contiguous:
Yes
Permitted: Yes
Wet Space: No
Addition: No
Conversion: No

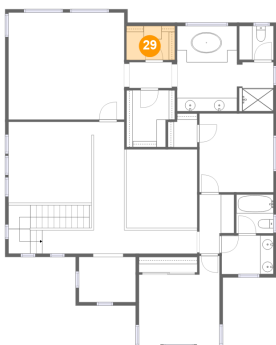
28 Floor 2 - Open To Below



Dimensions: 12'6" x 12'1"
Area: 150 sq. ft
Counted as Living Area: No

Heated: No
Finished: No
Enclosed: No
Contiguous: Yes
Permitted: No
Wet Space: No
Addition: No
Conversion: No

29 Floor 2 - W.i.c.

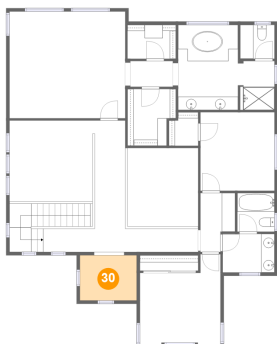


Dimensions: 7'3" x 5'1"
Area: 37 sq. ft
Counted as Living Area:
Yes

Heated: Yes
Finished: Yes
Enclosed: Yes
Contiguous:
Yes
Permitted: Yes
Wet Space: No
Addition: No
Conversion: No

4030 Borders Drive, Serrano Village, El Dorado Hills, El Dorado County, California, United

30 Floor 2 - Open To Below



Dimensions: 8'6" x 6'9"

Area: 58 sq. ft

Counted as Living Area: No

Heated: No

Finished: No

Enclosed: No

Contiguous: Yes

Permitted: No

Wet Space: No

Addition: No

Conversion: No