

2519 Cove Ave, La Grande, OR, US**Room dimensions****Floor 1****Total sqft: 14805****Living area: 14194**

#		Dimensions	sqft	Counted as living area
1	Room	11'6" x 13'11"	160 sq. ft	Yes
2	Gym	48'0" x 24'10"	1194 sq. ft	Yes
3	Eat-in Kitchen	19'6" x 15'8"	277 sq. ft	Yes
4	Exam Room	9'10" x 10'5"	103 sq. ft	Yes
5	Room	38'2" x 19'9"	755 sq. ft	Yes
6	Open Kitchen	8'10" x 10'5"	92 sq. ft	Yes
7	Foyer	29'0" x 20'3"	444 sq. ft	Yes
8	Room	8'7" x 14'10"	127 sq. ft	Yes
9	Hall	7'5" x 16'6"	92 sq. ft	Yes
10	Exam Room	9'11" x 10'4"	97 sq. ft	Yes
11	Bath	10'2" x 8'2"	72 sq. ft	Yes

Scan captured on Sat, 15 Mar 2025 21:16:57 GMT

Information is calculated by Cubicasa technology deemed highly reliable but not guaranteed.

2519 Cove Ave,La Grande,OR,US

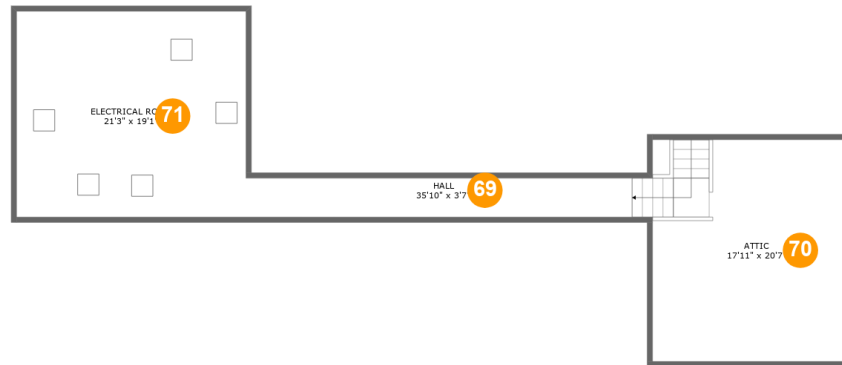
#		Dimensions	sqft	Counted as living area
12	WC	8'4" x 6'4"	53 sq. ft	Yes
13	Exam Room	9'11" x 10'5"	104 sq. ft	Yes
14	WC	8'4" x 6'7"	55 sq. ft	Yes
15	Exam Room	9'8" x 10'5"	101 sq. ft	Yes
16	Laundry	6'6" x 9'8"	63 sq. ft	Yes
17	Room	95'7" x 40'10"	2767 sq. ft	Yes
18	Hall	54'5" x 8'2"	265 sq. ft	Yes
19	Electrical Room	10'1" x 8'7"	87 sq. ft	No
20	Exam Room	9'10" x 10'0"	96 sq. ft	Yes
21	Swimming Pool	26'4" x 23'6"	573 sq. ft	No
22	Exam Room	10'0" x 10'0"	98 sq. ft	Yes
23	Exam Room	11'2" x 10'0"	111 sq. ft	Yes
24	Exam Room	10'0" x 10'5"	99 sq. ft	Yes
25	Hall	7'5" x 11'0"	71 sq. ft	Yes
26	Room	13'11" x 11'11"	167 sq. ft	Yes
27	Hall	3'8" x 10'9"	39 sq. ft	Yes
28	Exam Room	10'0" x 10'9"	102 sq. ft	Yes
29	Exam Room	12'4" x 13'0"	156 sq. ft	Yes
30	Electrical Room	13'11" x 16'4"	228 sq. ft	No
31	Room	10'2" x 5'2"	53 sq. ft	Yes
32	WC	3'8" x 4'9"	17 sq. ft	Yes

2519 Cove Ave,La Grande,OR,US

#		Dimensions	sqft	Counted as living area
33	Exam Room	10'0" x 10'4"	99 sq. ft	Yes
34	Bath	23'5" x 10'4"	190 sq. ft	Yes
35	Hall	6'8" x 21'8"	105 sq. ft	Yes
36	Exam Room	11'8" x 13'0"	147 sq. ft	Yes
37	Exam Room	12'1" x 10'5"	126 sq. ft	Yes
38	Hall	24'5" x 9'8"	167 sq. ft	Yes
39	Hall	12'6" x 19'0"	233 sq. ft	No
40	Hall	10'1" x 21'8"	107 sq. ft	Yes
41	Sauna	6'6" x 5'3"	34 sq. ft	Yes
42	Sauna	6'6" x 5'9"	38 sq. ft	Yes
43	Hall	20'0" x 8'0"	160 sq. ft	Yes
44	Exam Room	9'10" x 10'9"	102 sq. ft	Yes
45	Hall	20'5" x 8'3"	167 sq. ft	Yes
46	Hall	77'7" x 6'2"	339 sq. ft	Yes
47	Exam Room	10'2" x 10'4"	101 sq. ft	Yes
48	Hall	8'2" x 10'7"	71 sq. ft	Yes
49	WC	3'8" x 4'7"	17 sq. ft	Yes
50	Room	16'2" x 16'4"	249 sq. ft	Yes
51	Exam Room	11'2" x 10'3"	114 sq. ft	Yes
52	Office	24'5" x 18'1"	441 sq. ft	Yes
53	Hall	7'5" x 15'10"	88 sq. ft	Yes

2519 Cove Ave,La Grande,OR,US

#		Dimensions	sqft	Counted as living area
54	WC	3'8" x 4'9"	17 sq. ft	Yes
55	Exam Room	9'11" x 10'4"	99 sq. ft	Yes
56	Room	10'2" x 7'2"	67 sq. ft	Yes
57	Room	54'2" x 35'2"	1489 sq. ft	Yes
58	Exam Room	9'11" x 10'5"	99 sq. ft	Yes
59	Exam Room	9'11" x 10'5"	99 sq. ft	Yes
60	Hall	17'4" x 32'2"	234 sq. ft	Yes
61	Hall	10'1" x 21'9"	111 sq. ft	Yes
62	Bath	23'5" x 11'0"	217 sq. ft	Yes
63	Hall	7'5" x 21'9"	108 sq. ft	Yes
64	Electrical Room	5'6" x 5'9"	32 sq. ft	No
65	Office	9'10" x 9'9"	96 sq. ft	Yes
66	Office	13'5" x 20'3"	285 sq. ft	Yes
67	Exam Room	10'2" x 10'5"	102 sq. ft	Yes
68	Office	10'4" x 20'3"	202 sq. ft	Yes

2519 Cove Ave, La Grande, OR, US

Room dimensions

Floor 2

Total sqft: 1022

Living area: 0

#		Dimensions	sqft	Counted as living area
69	Hall	35'10" x 3'7"	173 sq. ft	No
70	Attic	17'11" x 20'7"	201 sq. ft	No
71	Electrical Room	21'3" x 19'1"	405 sq. ft	No

1 Floor 1 - Room



Dimensions: 11'6" x 13'11"
Area: 160 sq. ft
Counted as living area: Yes

Heated: Yes
Finished: Yes
Enclosed: Yes
Contiguous: Yes
Permitted: Yes
Wet space: No
Addition: No
Conversion: No

2 Floor 1 - Gym



Dimensions: 48'0" x 24'10"
Area: 1194 sq. ft
Counted as living area: Yes

Heated: Yes
Finished: Yes
Enclosed: Yes
Contiguous: Yes
Permitted: Yes
Wet space: No
Addition: No
Conversion: No

3 Floor 1 - Eat-in Kitchen



Dimensions: 19'6" x 15'8"
Area: 277 sq. ft
Counted as living area: Yes

Heated: Yes
Finished: Yes
Enclosed: Yes
Contiguous: Yes
Permitted: Yes
Wet space: No
Addition: No
Conversion: No

4 Floor 1 - Exam Room



Dimensions: 9'10" x 10'5"
Area: 103 sq. ft
Counted as living area: Yes

Heated: Yes
Finished: Yes
Enclosed: Yes
Contiguous: Yes
Permitted: Yes
Wet space: No
Addition: No
Conversion: No

5 Floor 1 - Room



Dimensions: 38'2" x 19'9"
Area: 755 sq. ft
Counted as living area: Yes

Heated: Yes
Finished: Yes
Enclosed: Yes
Contiguous: Yes
Permitted: Yes
Wet space: No
Addition: No
Conversion: No

6 Floor 1 - Open Kitchen



Dimensions: 8'10" x 10'5"
Area: 92 sq. ft
Counted as living area: Yes

Heated: Yes
Finished: Yes
Enclosed: Yes
Contiguous: Yes
Permitted: Yes
Wet space: No
Addition: No
Conversion: No

7 Floor 1 - Foyer



Dimensions: 29'0" x 20'3"
Area: 444 sq. ft
Counted as living area: Yes

Heated: Yes
Finished: Yes
Enclosed: Yes
Contiguous: Yes
Permitted: Yes
Wet space: No
Addition: No
Conversion: No

8 Floor 1 - Room



Dimensions: 8'7" x 14'10"
Area: 127 sq. ft
Counted as living area: Yes

Heated: Yes
Finished: Yes
Enclosed: Yes
Contiguous: Yes
Permitted: Yes
Wet space: No
Addition: No
Conversion: No

9 Floor 1 - Hall



Dimensions: 7'5" x 16'6"
Area: 92 sq. ft
Counted as living area: Yes

Heated: Yes
Finished: Yes
Enclosed: Yes
Contiguous: Yes
Permitted: Yes
Wet space: No
Addition: No
Conversion: No

10 Floor 1 - Exam Room



Dimensions: 9'11" x 10'4"
Area: 97 sq. ft
Counted as living area: Yes

Heated: Yes
Finished: Yes
Enclosed: Yes
Contiguous: Yes
Permitted: Yes
Wet space: No
Addition: No
Conversion: No

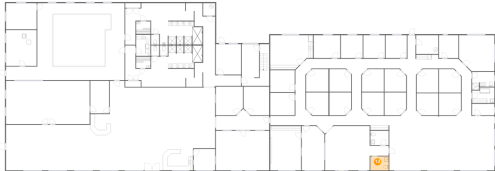
11 Floor 1 - Bath



Dimensions: 10'2" x 8'2"
Area: 72 sq. ft
Counted as living area: Yes

Heated: Yes
Finished: Yes
Enclosed: Yes
Contiguous: Yes
Permitted: Yes
Wet space: Yes
Addition: No
Conversion: No

12 Floor 1 - WC



Dimensions: 8'4" x 6'4"
Area: 53 sq. ft
Counted as living area: Yes

Heated: Yes
Finished: Yes
Enclosed: Yes
Contiguous: Yes
Permitted: Yes
Wet space: Yes
Addition: No
Conversion: No

13 Floor 1 - Exam Room



Dimensions: 9'11" x 10'5"
Area: 104 sq. ft
Counted as living area: Yes

Heated: Yes
Finished: Yes
Enclosed: Yes
Contiguous: Yes
Permitted: Yes
Wet space: No
Addition: No
Conversion: No

14 Floor 1 - WC



Dimensions: 8'4" x 6'7"
Area: 55 sq. ft
Counted as living area: Yes

Heated: Yes
Finished: Yes
Enclosed: Yes
Contiguous: Yes
Permitted: Yes
Wet space: No
Addition: No
Conversion: No

15 Floor 1 - Exam Room



Dimensions: 9'8" x 10'5"
Area: 101 sq. ft
Counted as living area: Yes

Heated: Yes
Finished: Yes
Enclosed: Yes
Contiguous: Yes
Permitted: Yes
Wet space: No
Addition: No
Conversion: No

16 Floor 1 - Laundry



Dimensions: 6'6" x 9'8"
Area: 63 sq. ft
Counted as living area: Yes

Heated: Yes
Finished: Yes
Enclosed: Yes
Contiguous: Yes
Permitted: Yes
Wet space: No
Addition: No
Conversion: No

17 Floor 1 - Room



Dimensions: 95'7" x 40'10"
Area: 2767 sq. ft
Counted as living area: Yes

Heated: Yes
Finished: Yes
Enclosed: Yes
Contiguous: Yes
Permitted: Yes
Wet space: No
Addition: No
Conversion: No

18 Floor 1 - Hall

Dimensions: 54'5" x 8'2"
Area: 265 sq. ft
Counted as living area: Yes

Heated: Yes
Finished: Yes
Enclosed: Yes
Contiguous: Yes
Permitted: Yes
Wet space: No
Addition: No
Conversion: No

19 Floor 1 - Electrical Room

Dimensions: 10'1" x 8'7"
Area: 87 sq. ft
Counted as living area: No

Heated: No
Finished: No
Enclosed: Yes
Contiguous: Yes
Permitted: Yes
Wet space: No
Addition: No
Conversion: No

20 Floor 1 - Exam Room

Dimensions: 9'10" x 10'0"
Area: 96 sq. ft
Counted as living area: Yes

Heated: Yes
Finished: Yes
Enclosed: Yes
Contiguous: Yes
Permitted: Yes
Wet space: No
Addition: No
Conversion: No

21 Floor 1 - Swimming Pool



Dimensions: 26'4" x 23'6"
Area: 573 sq. ft
Counted as living area: No

Heated: No
Finished: No
Enclosed: No
Contiguous: Yes
Permitted: No
Wet space: No
Addition: No
Conversion: No

22 Floor 1 - Exam Room



Dimensions: 10'0" x 10'0"
Area: 98 sq. ft
Counted as living area: Yes

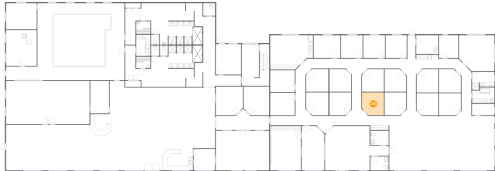
Heated: Yes
Finished: Yes
Enclosed: Yes
Contiguous: Yes
Permitted: Yes
Wet space: No
Addition: No
Conversion: No

23 Floor 1 - Exam Room



Dimensions: 11'2" x 10'0"
Area: 111 sq. ft
Counted as living area: Yes

Heated: Yes
Finished: Yes
Enclosed: Yes
Contiguous: Yes
Permitted: Yes
Wet space: No
Addition: No
Conversion: No

24 Floor 1 - Exam Room

Dimensions: 10'0" x 10'5"
Area: 99 sq. ft
Counted as living area: Yes

Heated: Yes
Finished: Yes
Enclosed: Yes
Contiguous: Yes
Permitted: Yes
Wet space: No
Addition: No
Conversion: No

25 Floor 1 - Hall

Dimensions: 7'5" x 11'0"
Area: 71 sq. ft
Counted as living area: Yes

Heated: Yes
Finished: Yes
Enclosed: Yes
Contiguous: Yes
Permitted: Yes
Wet space: No
Addition: No
Conversion: No

26 Floor 1 - Room

Dimensions: 13'11" x 11'11"
Area: 167 sq. ft
Counted as living area: Yes

Heated: Yes
Finished: Yes
Enclosed: Yes
Contiguous: Yes
Permitted: Yes
Wet space: No
Addition: No
Conversion: No

27 Floor 1 - Hall



Dimensions: 3'8" x 10'9"
Area: 39 sq. ft
Counted as living area: Yes

Heated: Yes
Finished: Yes
Enclosed: Yes
Contiguous: Yes
Permitted: Yes
Wet space: No
Addition: No
Conversion: No

28 Floor 1 - Exam Room



Dimensions: 10'0" x 10'9"
Area: 102 sq. ft
Counted as living area: Yes

Heated: Yes
Finished: Yes
Enclosed: Yes
Contiguous: Yes
Permitted: Yes
Wet space: No
Addition: No
Conversion: No

29 Floor 1 - Exam Room



Dimensions: 12'4" x 13'0"
Area: 156 sq. ft
Counted as living area: Yes

Heated: Yes
Finished: Yes
Enclosed: Yes
Contiguous: Yes
Permitted: Yes
Wet space: No
Addition: No
Conversion: No

30 Floor 1 - Electrical Room



Dimensions: 13'11" x 16'4"
Area: 228 sq. ft
Counted as living area: No

Heated: No
Finished: No
Enclosed: Yes
Contiguous: Yes
Permitted: Yes
Wet space: No
Addition: No
Conversion: No

31 Floor 1 - Room



Dimensions: 10'2" x 5'2"
Area: 53 sq. ft
Counted as living area: Yes

Heated: Yes
Finished: Yes
Enclosed: Yes
Contiguous: Yes
Permitted: Yes
Wet space: No
Addition: No
Conversion: No

32 Floor 1 - WC



Dimensions: 3'8" x 4'9"
Area: 17 sq. ft
Counted as living area: Yes

Heated: Yes
Finished: Yes
Enclosed: Yes
Contiguous: Yes
Permitted: Yes
Wet space: No
Addition: No
Conversion: No

33 Floor 1 - Exam Room



Dimensions: 10'0" x 10'4"
Area: 99 sq. ft
Counted as living area: Yes

Heated: Yes
Finished: Yes
Enclosed: Yes
Contiguous: Yes
Permitted: Yes
Wet space: No
Addition: No
Conversion: No

34 Floor 1 - Bath



Dimensions: 23'5" x 10'4"
Area: 190 sq. ft
Counted as living area: Yes

Heated: Yes
Finished: Yes
Enclosed: Yes
Contiguous: Yes
Permitted: Yes
Wet space: Yes
Addition: No
Conversion: No

35 Floor 1 - Hall



Dimensions: 6'8" x 21'8"
Area: 105 sq. ft
Counted as living area: Yes

Heated: Yes
Finished: Yes
Enclosed: Yes
Contiguous: Yes
Permitted: Yes
Wet space: No
Addition: No
Conversion: No

36 Floor 1 - Exam Room



Dimensions: 11'8" x 13'0"
Area: 147 sq. ft
Counted as living area: Yes

Heated: Yes
Finished: Yes
Enclosed: Yes
Contiguous: Yes
Permitted: Yes
Wet space: No
Addition: No
Conversion: No

37 Floor 1 - Exam Room



Dimensions: 12'1" x 10'5"
Area: 126 sq. ft
Counted as living area: Yes

Heated: Yes
Finished: Yes
Enclosed: Yes
Contiguous: Yes
Permitted: Yes
Wet space: No
Addition: No
Conversion: No

38 Floor 1 - Hall



Dimensions: 24'5" x 9'8"
Area: 167 sq. ft
Counted as living area: Yes

Heated: Yes
Finished: Yes
Enclosed: Yes
Contiguous: Yes
Permitted: Yes
Wet space: No
Addition: No
Conversion: No

39 Floor 1 - Hall



Dimensions: 12'6" x 19'0"
Area: 233 sq. ft
Counted as living area: No

Heated: Yes
Finished: No
Enclosed: Yes
Contiguous: Yes
Permitted: Yes
Wet space: No
Addition: No
Conversion: No

40 Floor 1 - Hall



Dimensions: 10'1" x 21'8"
Area: 107 sq. ft
Counted as living area: Yes

Heated: Yes
Finished: Yes
Enclosed: Yes
Contiguous: Yes
Permitted: Yes
Wet space: No
Addition: No
Conversion: No

41 Floor 1 - Sauna



Dimensions: 6'6" x 5'3"
Area: 34 sq. ft
Counted as living area: Yes

Heated: Yes
Finished: Yes
Enclosed: Yes
Contiguous: Yes
Permitted: Yes
Wet space: No
Addition: No
Conversion: No

42 Floor 1 - Sauna



Dimensions: 6'6" x 5'9"
Area: 38 sq. ft
Counted as living area: Yes

Heated: Yes
Finished: Yes
Enclosed: Yes
Contiguous: Yes
Permitted: Yes
Wet space: No
Addition: No
Conversion: No

43 Floor 1 - Hall



Dimensions: 20'0" x 8'0"
Area: 160 sq. ft
Counted as living area: Yes

Heated: Yes
Finished: Yes
Enclosed: Yes
Contiguous: Yes
Permitted: Yes
Wet space: No
Addition: No
Conversion: No

44 Floor 1 - Exam Room



Dimensions: 9'10" x 10'9"
Area: 102 sq. ft
Counted as living area: Yes

Heated: Yes
Finished: Yes
Enclosed: Yes
Contiguous: Yes
Permitted: Yes
Wet space: No
Addition: No
Conversion: No

45 Floor 1 - Hall



Dimensions: 20'5" x 8'3"
Area: 167 sq. ft
Counted as living area: Yes

Heated: Yes
Finished: Yes
Enclosed: Yes
Contiguous: Yes
Permitted: Yes
Wet space: No
Addition: No
Conversion: No

46 Floor 1 - Hall



Dimensions: 77'7" x 6'2"
Area: 339 sq. ft
Counted as living area: Yes

Heated: Yes
Finished: Yes
Enclosed: Yes
Contiguous: Yes
Permitted: Yes
Wet space: No
Addition: No
Conversion: No

47 Floor 1 - Exam Room



Dimensions: 10'2" x 10'4"
Area: 101 sq. ft
Counted as living area: Yes

Heated: Yes
Finished: Yes
Enclosed: Yes
Contiguous: Yes
Permitted: Yes
Wet space: No
Addition: No
Conversion: No

48 Floor 1 - Hall



Dimensions: 8'2" x 10'7"
Area: 71 sq. ft
Counted as living area: Yes

Heated: Yes
Finished: Yes
Enclosed: Yes
Contiguous: Yes
Permitted: Yes
Wet space: No
Addition: No
Conversion: No

49 Floor 1 - WC



Dimensions: 3'8" x 4'7"
Area: 17 sq. ft
Counted as living area: Yes

Heated: Yes
Finished: Yes
Enclosed: Yes
Contiguous: Yes
Permitted: Yes
Wet space: No
Addition: No
Conversion: No

50 Floor 1 - Room



Dimensions: 16'2" x 16'4"
Area: 249 sq. ft
Counted as living area: Yes

Heated: Yes
Finished: Yes
Enclosed: Yes
Contiguous: Yes
Permitted: Yes
Wet space: No
Addition: No
Conversion: No

51 Floor 1 - Exam Room



Dimensions: 11'2" x 10'3"
Area: 114 sq. ft
Counted as living area: Yes

Heated: Yes
Finished: Yes
Enclosed: Yes
Contiguous: Yes
Permitted: Yes
Wet space: No
Addition: No
Conversion: No

52 Floor 1 - Office



Dimensions: 24'5" x 18'1"
Area: 441 sq. ft
Counted as living area: Yes

Heated: Yes
Finished: Yes
Enclosed: Yes
Contiguous: Yes
Permitted: Yes
Wet space: No
Addition: No
Conversion: No

53 Floor 1 - Hall



Dimensions: 7'5" x 15'10"
Area: 88 sq. ft
Counted as living area: Yes

Heated: Yes
Finished: Yes
Enclosed: Yes
Contiguous: Yes
Permitted: Yes
Wet space: No
Addition: No
Conversion: No

54 Floor 1 - WC



Dimensions: 3'8" x 4'9"
Area: 17 sq. ft
Counted as living area: Yes

Heated: Yes
Finished: Yes
Enclosed: Yes
Contiguous: Yes
Permitted: Yes
Wet space: No
Addition: No
Conversion: No

55 Floor 1 - Exam Room



Dimensions: 9'11" x 10'4"
Area: 99 sq. ft
Counted as living area: Yes

Heated: Yes
Finished: Yes
Enclosed: Yes
Contiguous: Yes
Permitted: Yes
Wet space: No
Addition: No
Conversion: No

56 Floor 1 - Room



Dimensions: 10'2" x 7'2"
Area: 67 sq. ft
Counted as living area: Yes

Heated: Yes
Finished: Yes
Enclosed: Yes
Contiguous: Yes
Permitted: Yes
Wet space: No
Addition: No
Conversion: No

57 Floor 1 - Room



Dimensions: 54'2" x 35'2"
Area: 1489 sq. ft
Counted as living area: Yes

Heated: Yes
Finished: Yes
Enclosed: Yes
Contiguous: Yes
Permitted: Yes
Wet space: No
Addition: No
Conversion: No

58 Floor 1 - Exam Room



Dimensions: 9'11" x 10'5"
Area: 99 sq. ft
Counted as living area: Yes

Heated: Yes
Finished: Yes
Enclosed: Yes
Contiguous: Yes
Permitted: Yes
Wet space: No
Addition: No
Conversion: No

59 Floor 1 - Exam Room



Dimensions: 9'11" x 10'5"
Area: 99 sq. ft
Counted as living area: Yes

Heated: Yes
Finished: Yes
Enclosed: Yes
Contiguous: Yes
Permitted: Yes
Wet space: No
Addition: No
Conversion: No

2519 Cove Ave, La Grande, OR, US**60 Floor 1 - Hall**

Dimensions: 17'4" x 32'2"
Area: 234 sq. ft
Counted as living area: Yes

Heated: Yes
Finished: Yes
Enclosed: Yes
Contiguous: Yes
Permitted: Yes
Wet space: No
Addition: No
Conversion: No

61 Floor 1 - Hall

Dimensions: 10'1" x 21'9"
Area: 111 sq. ft
Counted as living area: Yes

Heated: Yes
Finished: Yes
Enclosed: Yes
Contiguous: Yes
Permitted: Yes
Wet space: No
Addition: No
Conversion: No

62 Floor 1 - Bath

Dimensions: 23'5" x 11'0"
Area: 217 sq. ft
Counted as living area: Yes

Heated: Yes
Finished: Yes
Enclosed: Yes
Contiguous: Yes
Permitted: Yes
Wet space: Yes
Addition: No
Conversion: No

2519 Cove Ave, La Grande, OR, US

63 Floor 1 - Hall



Dimensions: 7'5" x 21'9"
Area: 108 sq. ft
Counted as living area: Yes

Heated: Yes
Finished: Yes
Enclosed: Yes
Contiguous: Yes
Permitted: Yes
Wet space: No
Addition: No
Conversion: No

64 Floor 1 - Electrical Room



Dimensions: 5'6" x 5'9"
Area: 32 sq. ft
Counted as living area: No

Heated: No
Finished: No
Enclosed: Yes
Contiguous: Yes
Permitted: Yes
Wet space: No
Addition: No
Conversion: No

65 Floor 1 - Office



Dimensions: 9'10" x 9'9"
Area: 96 sq. ft
Counted as living area: Yes

Heated: Yes
Finished: Yes
Enclosed: Yes
Contiguous: Yes
Permitted: Yes
Wet space: No
Addition: No
Conversion: No

66 Floor 1 - Office



Dimensions: 13'5" x 20'3"
Area: 285 sq. ft
Counted as living area: Yes

Heated: Yes
Finished: Yes
Enclosed: Yes
Contiguous: Yes
Permitted: Yes
Wet space: No
Addition: No
Conversion: No

67 Floor 1 - Exam Room



Dimensions: 10'2" x 10'5"
Area: 102 sq. ft
Counted as living area: Yes

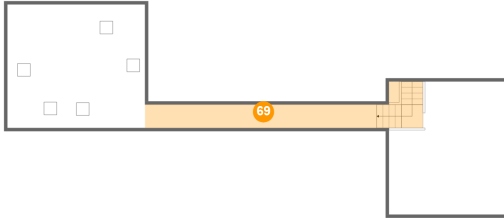
Heated: Yes
Finished: Yes
Enclosed: Yes
Contiguous: Yes
Permitted: Yes
Wet space: No
Addition: No
Conversion: No

68 Floor 1 - Office



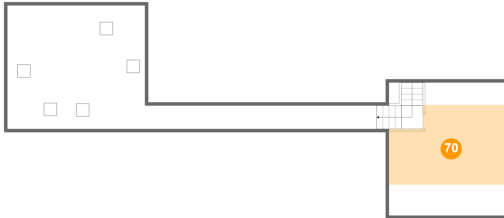
Dimensions: 10'4" x 20'3"
Area: 202 sq. ft
Counted as living area: Yes

Heated: Yes
Finished: Yes
Enclosed: Yes
Contiguous: Yes
Permitted: Yes
Wet space: No
Addition: No
Conversion: No

69 Floor 2 - Hall

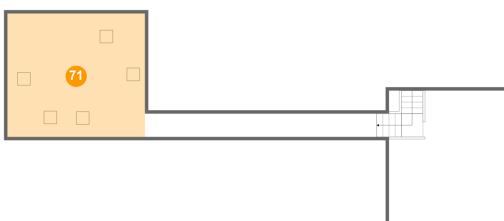
Dimensions: 35'10" x 3'7"
Area: 173 sq. ft
Counted as living area: No

Heated: Yes
Finished: No
Enclosed: Yes
Contiguous: Yes
Permitted: Yes
Wet space: No
Addition: No
Conversion: No

70 Floor 2 - Attic

Dimensions: 17'11" x 20'7"
Area: 201 sq. ft
Counted as living area: No

Heated: No
Finished: No
Enclosed: Yes
Contiguous: Yes
Permitted: Yes
Wet space: No
Addition: No
Conversion: No

71 Floor 2 - Electrical Room

Dimensions: 21'3" x 19'1"
Area: 405 sq. ft
Counted as living area: No

Heated: No
Finished: No
Enclosed: Yes
Contiguous: Yes
Permitted: Yes
Wet space: No
Addition: No
Conversion: No