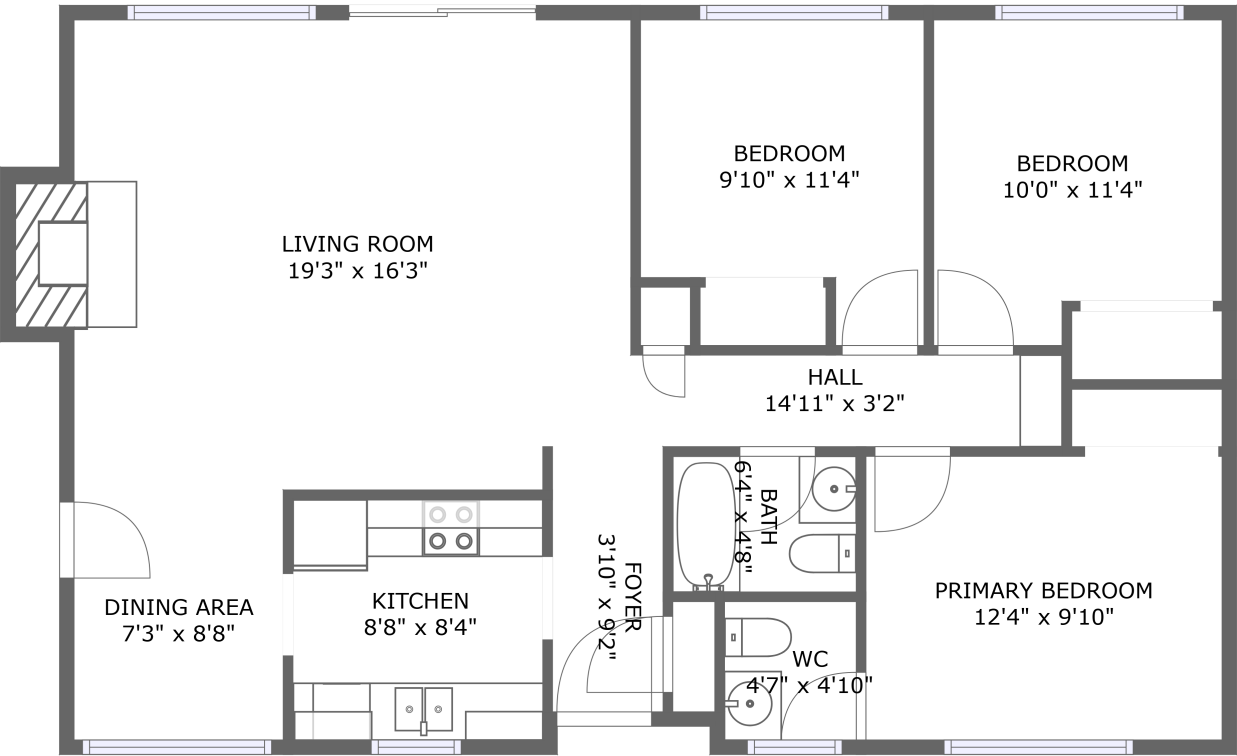


Home report

1032 Westwood Drive, Stayton, Oregon 97383, United States




FLOOR 1

Property summary


 **0** Garages


 **3** Bedrooms

 **1** Bathrooms

 **1** Half baths

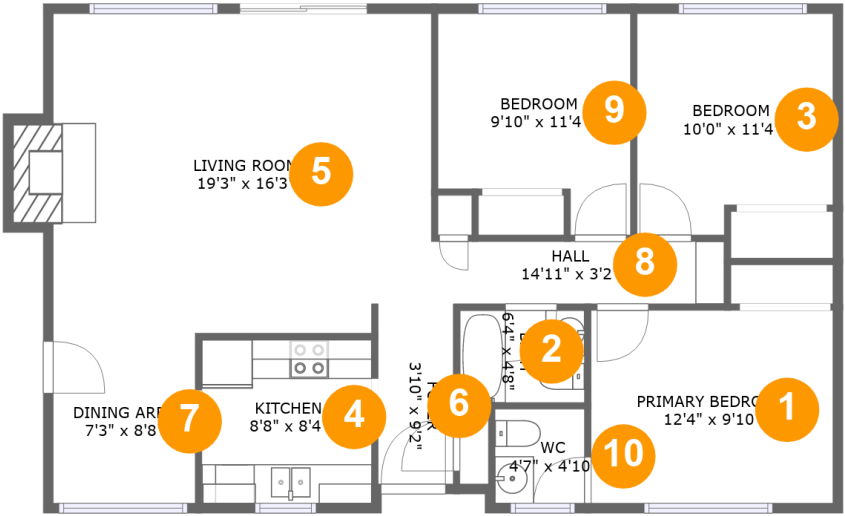
 **1** Floors

 **1,055** Gross living area sqft

 **1,067** Total sqft

Home report

1032 Westwood Drive, Stayton, Oregon 97383, United States

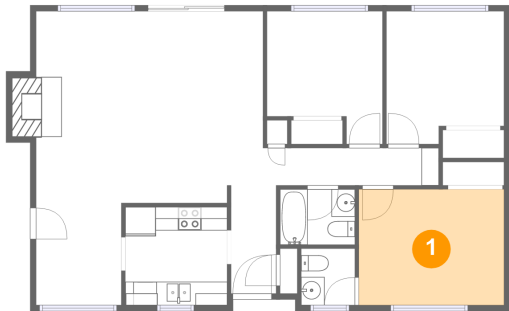


Room dimensions

Floor 1 Total sqft: 1067 Living area: 1055

#		Dimensions	sqft	Counted as living area
1	Primary Bedroom	12'4" x 9'10"	122 sq. ft	Yes
2	Bath	6'4" x 4'8"	30 sq. ft	Yes
3	Bedroom	10'0" x 11'4"	104 sq. ft	Yes
4	Kitchen	8'8" x 8'4"	72 sq. ft	Yes
5	Living Room	19'3" x 16'3"	321 sq. ft	Yes
6	Foyer	3'10" x 9'2"	35 sq. ft	Yes
7	Dining Area	7'3" x 8'8"	63 sq. ft	Yes
8	Hall	14'11" x 3'2"	48 sq. ft	Yes
9	Bedroom	9'10" x 11'4"	95 sq. ft	Yes
10	WC	4'7" x 4'10"	22 sq. ft	Yes

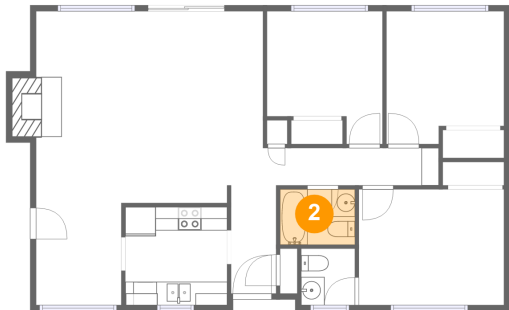
1 Floor 1 - Primary Bedroom



Dimensions: 12'4" x 9'10"
Area: 122 sq. ft
Counted as living area: Yes

Heated: Yes
Finished: Yes
Enclosed: Yes
Contiguous: Yes
Permitted: Yes
Wet space: No
Addition: No
Conversion: No

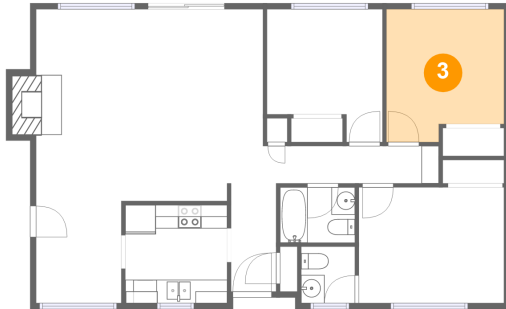
2 Floor 1 - Bath



Dimensions: 6'4" x 4'8"
Area: 30 sq. ft
Counted as living area: Yes

Heated: Yes
Finished: Yes
Enclosed: Yes
Contiguous: Yes
Permitted: Yes
Wet space: Yes
Addition: No
Conversion: No

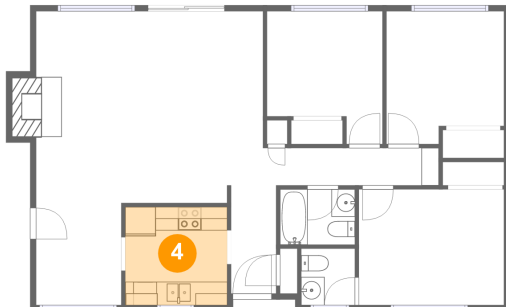
3 Floor 1 - Bedroom



Dimensions: 10'0" x 11'4"
Area: 104 sq. ft
Counted as living area: Yes

Heated: Yes
Finished: Yes
Enclosed: Yes
Contiguous: Yes
Permitted: Yes
Wet space: No
Addition: No
Conversion: No

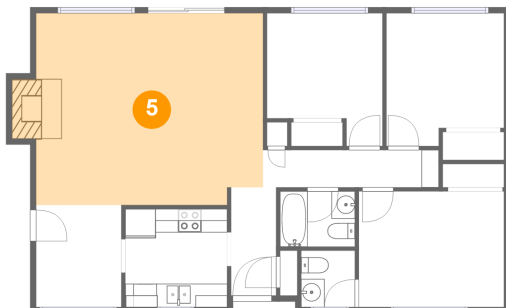
4 Floor 1 - Kitchen



Dimensions: 8'8" x 8'4"
Area: 72 sq. ft
Counted as living area: Yes

Heated: Yes
Finished: Yes
Enclosed: Yes
Contiguous: Yes
Permitted: Yes
Wet space: No
Addition: No
Conversion: No

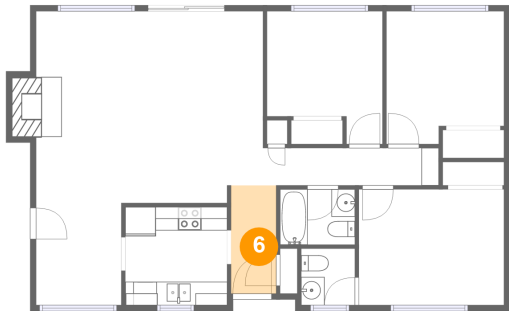
5 Floor 1 - Living Room



Dimensions: 19'3" x 16'3"
Area: 321 sq. ft
Counted as living area: Yes

Heated: Yes
Finished: Yes
Enclosed: Yes
Contiguous: Yes
Permitted: Yes
Wet space: No
Addition: No
Conversion: No

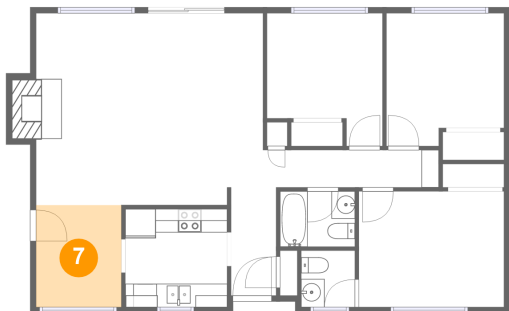
6 Floor 1 - Foyer



Dimensions: 3'10" x 9'2"
Area: 35 sq. ft
Counted as living area: Yes

Heated: Yes
Finished: Yes
Enclosed: Yes
Contiguous: Yes
Permitted: Yes
Wet space: No
Addition: No
Conversion: No

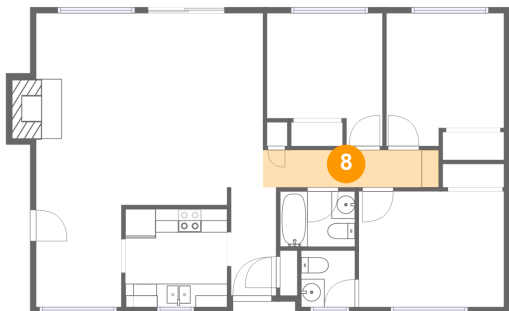
7 Floor 1 - Dining Area



Dimensions: 7'3" x 8'8"
Area: 63 sq. ft
Counted as living area: Yes

Heated: Yes
Finished: Yes
Enclosed: Yes
Contiguous: Yes
Permitted: Yes
Wet space: No
Addition: No
Conversion: No

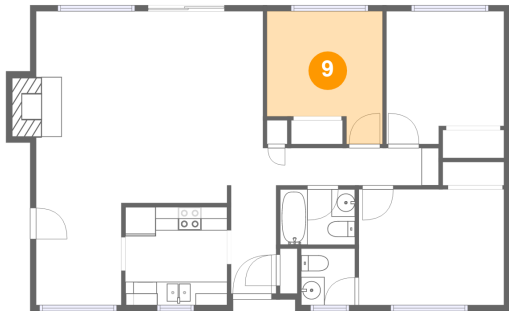
8 Floor 1 - Hall



Dimensions: 14'11" x 3'2"
Area: 48 sq. ft
Counted as living area: Yes

Heated: Yes
Finished: Yes
Enclosed: Yes
Contiguous: Yes
Permitted: Yes
Wet space: No
Addition: No
Conversion: No

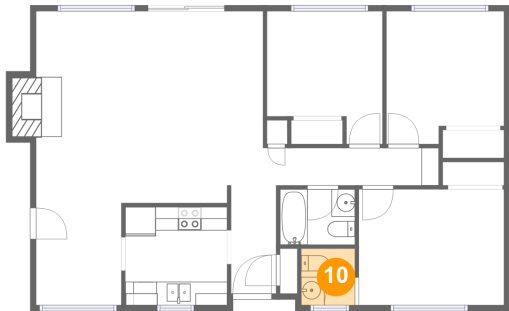
9 Floor 1 - Bedroom



Dimensions: 9'10" x 11'4"
Area: 95 sq. ft
Counted as living area: Yes

Heated: Yes
Finished: Yes
Enclosed: Yes
Contiguous: Yes
Permitted: Yes
Wet space: No
Addition: No
Conversion: No

10 Floor 1 - WC



Dimensions: 4'7" x 4'10"
Area: 22 sq. ft
Counted as living area: Yes

Heated: Yes
Finished: Yes
Enclosed: Yes
Contiguous: Yes
Permitted: Yes
Wet space: Yes
Addition: No
Conversion: No