



Home report


1028 Pampero Crescent, Stittsville, Stittsville, Ontario, Canada,
K2S 0N4





Property summary


 **1** Garages


 **3** Bedrooms

 **1** Bathrooms

 **1** Half baths

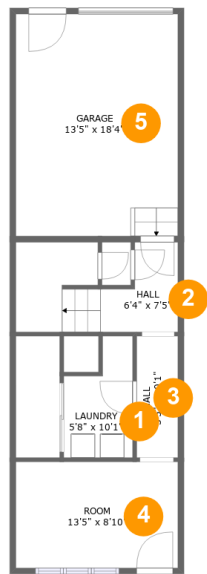
 **3** Floors

 **1,563** Gross living area sqft

 **1,921** Total sqft

Home report

1028 Pampero Crescent, Stittsville, Stittsville, Ontario, Canada,
K2S 0N4



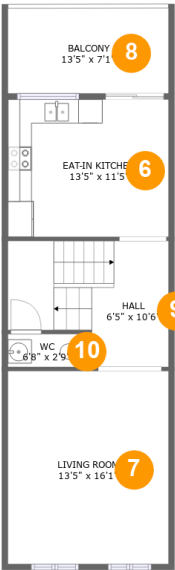
Room dimensions

Floor 1 Total sqft: 652 Living area: 389

#		Dimensions	sqft	Counted as living area
1	Laundry	5'8" x 10'1"	47 sq. ft	Yes
2	Hall	6'4" x 7'5"	87 sq. ft	Yes
3	Hall	3'5" x 10'1"	34 sq. ft	Yes
4	Room	13'5" x 8'10"	118 sq. ft	Yes
5	Garage	13'5" x 18'4"	247 sq. ft	No

Home report

1028 Pampero Crescent, Stittsville, Stittsville, Ontario, Canada,
K2S 0N4



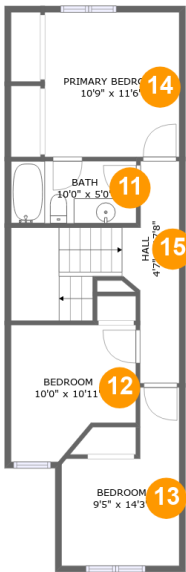
Room dimensions

Floor 2 Total sqft: 672 Living area: 577

#		Dimensions	sqft	Counted as living area
6	Eat-in Kitchen	13'5" x 11'5"	154 sq. ft	Yes
7	Living Room	13'5" x 16'1"	216 sq. ft	Yes
8	Balcony	13'5" x 7'1"	95 sq. ft	No
9	Hall	6'5" x 10'6"	120 sq. ft	Yes
10	WC	6'8" x 2'9"	18 sq. ft	Yes

Home report

1028 Pampero Crescent, Stittsville, Stittsville, Ontario, Canada,
K2S 0N4

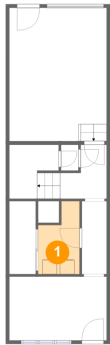


Room dimensions

Floor 3 Total sqft: 597 Living area: 597

#		Dimensions	sqft	Counted as living area
11	Bath	10'0" x 5'0"	50 sq. ft	Yes
12	Bedroom	10'0" x 10'11"	93 sq. ft	Yes
13	Bedroom	9'5" x 14'3"	98 sq. ft	Yes
14	Primary Bedroom	10'9" x 11'6"	124 sq. ft	Yes
15	Hall	4'7" x 17'8"	119 sq. ft	Yes

1 Floor 1 - Laundry



Dimensions: 5'8" x 10'1"
Area: 47 sq. ft
Counted as living area: Yes

Heated: Yes
Finished: Yes
Enclosed: Yes
Contiguous: Yes
Permitted: Yes
Wet space: No
Addition: No
Conversion: No

2 Floor 1 - Hall



Dimensions: 6'4" x 7'5"
Area: 87 sq. ft
Counted as living area: Yes

Heated: Yes
Finished: Yes
Enclosed: Yes
Contiguous: Yes
Permitted: Yes
Wet space: No
Addition: No
Conversion: No

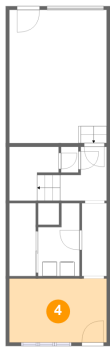
3 Floor 1 - Hall



Dimensions: 3'5" x 10'1"
Area: 34 sq. ft
Counted as living area: Yes

Heated: Yes
Finished: Yes
Enclosed: Yes
Contiguous: Yes
Permitted: Yes
Wet space: No
Addition: No
Conversion: No

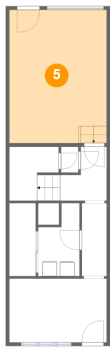
4 Floor 1 - Room



Dimensions: 13'5" x 8'10"
Area: 118 sq. ft
Counted as living area: Yes

Heated: Yes
Finished: Yes
Enclosed: Yes
Contiguous: Yes
Permitted: Yes
Wet space: No
Addition: No
Conversion: No

5 Floor 1 - Garage



Dimensions: 13'5" x 18'4"
Area: 247 sq. ft
Counted as living area: No

Heated: No
Finished: No
Enclosed: Yes
Contiguous: Yes
Permitted: Yes
Wet space: No
Addition: No
Conversion: No

6 Floor 2 - Eat-in Kitchen



Dimensions: 13'5" x 11'5"
Area: 154 sq. ft
Counted as living area: Yes

Heated: Yes
Finished: Yes
Enclosed: Yes
Contiguous: Yes
Permitted: Yes
Wet space: No
Addition: No
Conversion: No

7 Floor 2 - Living Room



Dimensions: 13'5" x 16'1"
Area: 216 sq. ft
Counted as living area: Yes

Heated: Yes
Finished: Yes
Enclosed: Yes
Contiguous: Yes
Permitted: Yes
Wet space: No
Addition: No
Conversion: No

8 Floor 2 - Balcony



Dimensions: 13'5" x 7'1"
Area: 95 sq. ft
Counted as living area: No

Heated: No
Finished: Yes
Enclosed: No
Contiguous: Yes
Permitted: Yes
Wet space: No
Addition: No
Conversion: No

9 Floor 2 - Hall



Dimensions: 6'5" x 10'6"
Area: 120 sq. ft
Counted as living area: Yes

Heated: Yes
Finished: Yes
Enclosed: Yes
Contiguous: Yes
Permitted: Yes
Wet space: No
Addition: No
Conversion: No

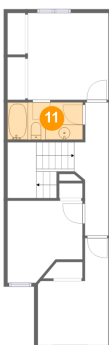
10 Floor 2 - WC



Dimensions: 6'8" x 2'9"
Area: 18 sq. ft
Counted as living area: Yes

Heated: Yes
Finished: Yes
Enclosed: Yes
Contiguous: Yes
Permitted: Yes
Wet space: No
Addition: No
Conversion: No

11 Floor 3 - Bath



Dimensions: 10'0" x 5'0"
Area: 50 sq. ft
Counted as living area: Yes

Heated: Yes
Finished: Yes
Enclosed: Yes
Contiguous: Yes
Permitted: Yes
Wet space: Yes
Addition: No
Conversion: No

12 Floor 3 - Bedroom



Dimensions: 10'0" x 10'11"
Area: 93 sq. ft
Counted as living area: Yes

Heated: Yes
Finished: Yes
Enclosed: Yes
Contiguous: Yes
Permitted: Yes
Wet space: No
Addition: No
Conversion: No

13 Floor 3 - Bedroom



Dimensions: 9'5" x 14'3"
Area: 98 sq. ft
Counted as living area: Yes

Heated: Yes
Finished: Yes
Enclosed: Yes
Contiguous: Yes
Permitted: Yes
Wet space: No
Addition: No
Conversion: No

14 Floor 3 - Primary Bedroom



Dimensions: 10'9" x 11'6"
Area: 124 sq. ft
Counted as living area: Yes

Heated: Yes
Finished: Yes
Enclosed: Yes
Contiguous: Yes
Permitted: Yes
Wet space: No
Addition: No
Conversion: No

15 Floor 3 - Hall



Dimensions: 4'7" x 17'8"
Area: 119 sq. ft
Counted as living area: Yes

Heated: Yes
Finished: Yes
Enclosed: Yes
Contiguous: Yes
Permitted: Yes
Wet space: No
Addition: No
Conversion: No