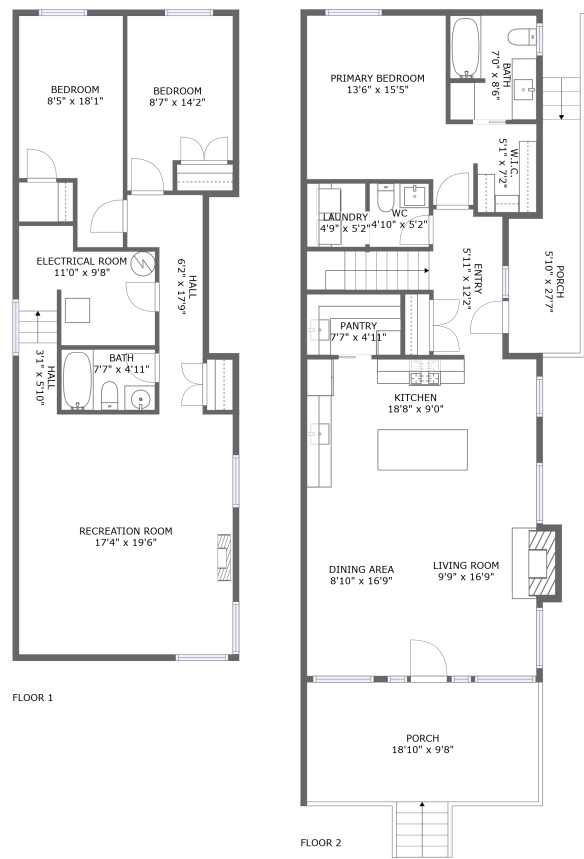






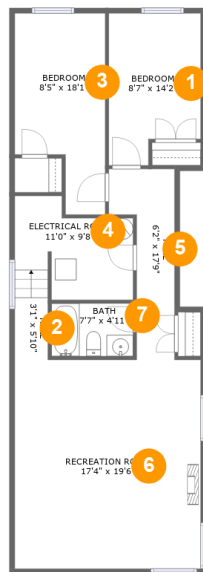
1423 Spadina Crescent E, Saskatoon, SK, CA



Property Summary

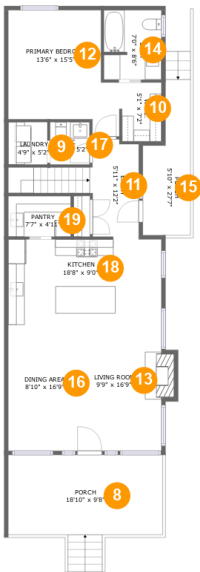
 **0** garages  **3** bedrooms  **2** bathrooms  **1** half baths

 **2** floors  **1,899** Gross Living Area sqft  **2,311** total sqft

1423 Spadina Crescent E, Saskatoon, SK, CA**Room Dimensions****Floor 1****Total sqft: 939****Living area: 852**

#	Room name	Dimensions	Area (sqft)	Counted as Living Area
1	Bedroom	8'7" x 14'2"	110 sq. ft	Yes
2	Hall	3'1" x 5'10"	26 sq. ft	Yes
3	Bedroom	8'5" x 18'1"	132 sq. ft	Yes
4	Electrical Room	11'0" x 9'8"	83 sq. ft	No
5	Hall	6'2" x 17'9"	74 sq. ft	Yes
6	Recreation Room	17'4" x 19'6"	339 sq. ft	Yes
7	Bath	7'7" x 4'11"	38 sq. ft	Yes

1423 Spadina Crescent E, Saskatoon, SK, CA



Room Dimensions

Floor 2

Total sqft: 1372

Living area: 1047

#	Room name	Dimensions	Area (sqft)	Counted as Living Area
8	Porch	18'10" x 9'8"	201 sq. ft	No
9	Laundry	4'9" x 5'2"	25 sq. ft	Yes
10	W.i.c.	5'1" x 7'2"	35 sq. ft	Yes
11	Entry	5'11" x 12'2"	99 sq. ft	Yes
12	Primary Bedroom	13'6" x 15'5"	167 sq. ft	Yes
13	Living Room	9'9" x 16'9"	172 sq. ft	Yes
14	Bath	7'0" x 8'6"	58 sq. ft	Yes
15	Porch	5'10" x 27'7"	114 sq. ft	No
16	Dining Area	8'10" x 16'9"	148 sq. ft	Yes
17	Wc	4'10" x 5'2"	25 sq. ft	Yes
18	Kitchen	18'8" x 9'0"	168 sq. ft	Yes

1423 Spadina Crescent E,Saskatoon,SK,CA

#	Room name	Dimensions	Area (sqft)	Counted as Living Area
19	Pantry	7'7" x 4'11"	38 sq. ft	Yes

1423 Spadina Crescent E,Saskatoon,SK,CA

1 Floor 1 - Bedroom



Dimensions: 8'7" x 14'2"
Area: 110 sq. ft
Counted as Living Area:
Yes

Heated: Yes
Finished: Yes
Enclosed: Yes
Contiguous:
Yes
Permitted: Yes
Wet Space: No
Addition: No
Conversion: No

2 Floor 1 - Hall



Dimensions: 3'1" x 5'10"
Area: 26 sq. ft
Counted as Living Area:
Yes

Heated: Yes
Finished: Yes
Enclosed: Yes
Contiguous:
Yes
Permitted: Yes
Wet Space: No
Addition: No
Conversion: No

1423 Spadina Crescent E,Saskatoon,SK,CA

3 Floor 1 - Bedroom



Dimensions: 8'5" x 18'1"
Area: 132 sq. ft
Counted as Living Area:
Yes

Heated: Yes
Finished: Yes
Enclosed: Yes
Contiguous:
Yes
Permitted: Yes
Wet Space: No
Addition: No
Conversion: No

4 Floor 1 - Electrical Room



Dimensions: 11'0" x 9'8"
Area: 83 sq. ft
Counted as Living Area: No

Heated: No
Finished: No
Enclosed: Yes
Contiguous: Yes
Permitted: Yes
Wet Space: No
Addition: No
Conversion: No

5 Floor 1 - Hall



Dimensions: 6'2" x 17'9"
Area: 74 sq. ft
Counted as Living Area:
Yes

Heated: Yes
Finished: Yes
Enclosed: Yes
Contiguous:
Yes
Permitted: Yes
Wet Space: No
Addition: No
Conversion: No

1423 Spadina Crescent E, Saskatoon, SK, CA**6 Floor 1 - Recreation Room**

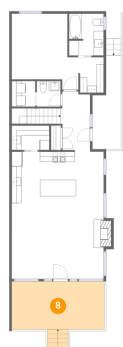
Dimensions: 17'4" x 19'6"
Area: 339 sq. ft
Counted as Living Area:
Yes

Heated: Yes
Finished: Yes
Enclosed: Yes
Contiguous:
Yes
Permitted: Yes
Wet Space: No
Addition: No
Conversion: No

7 Floor 1 - Bath

Dimensions: 7'7" x 4'11"
Area: 38 sq. ft
Counted as Living Area:
Yes

Heated: Yes
Finished: Yes
Enclosed: Yes
Contiguous:
Yes
Permitted: Yes
Wet Space: Yes
Addition: No
Conversion: No

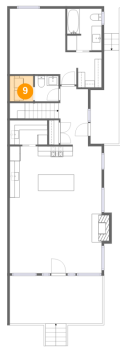
8 Floor 2 - Porch

Dimensions: 18'10" x 9'8"
Area: 201 sq. ft
Counted as Living Area: No

Heated: No
Finished: Yes
Enclosed: No
Contiguous: Yes
Permitted: Yes
Wet Space: No
Addition: No
Conversion: No

1423 Spadina Crescent E, Saskatoon, SK, CA

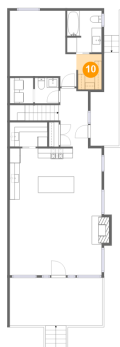
9 Floor 2 - Laundry



Dimensions: 4'9" x 5'2"
Area: 25 sq. ft
Counted as Living Area:
Yes

Heated: Yes
Finished: Yes
Enclosed: Yes
Contiguous:
Yes
Permitted: Yes
Wet Space: No
Addition: No
Conversion: No

10 Floor 2 - W.i.c.



Dimensions: 5'1" x 7'2"
Area: 35 sq. ft
Counted as Living Area:
Yes

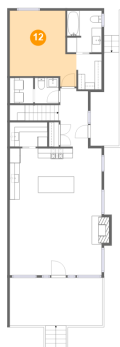
Heated: Yes
Finished: Yes
Enclosed: Yes
Contiguous:
Yes
Permitted: Yes
Wet Space: No
Addition: No
Conversion: No

11 Floor 2 - Entry



Dimensions: 5'11" x 12'2"
Area: 99 sq. ft
Counted as Living Area:
Yes

Heated: Yes
Finished: Yes
Enclosed: Yes
Contiguous:
Yes
Permitted: Yes
Wet Space: No
Addition: No
Conversion: No

1423 Spadina Crescent E, Saskatoon, SK, CA**12 Floor 2 - Primary Bedroom**

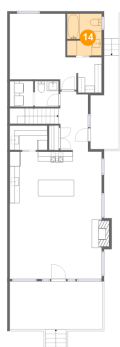
Dimensions: 13'6" x 15'5"
Area: 167 sq. ft
Counted as Living Area:
Yes

Heated: Yes
Finished: Yes
Enclosed: Yes
Contiguous:
Yes
Permitted: Yes
Wet Space: No
Addition: No
Conversion: No

13 Floor 2 - Living Room

Dimensions: 9'9" x 16'9"
Area: 172 sq. ft
Counted as Living Area:
Yes

Heated: Yes
Finished: Yes
Enclosed: Yes
Contiguous:
Yes
Permitted: Yes
Wet Space: No
Addition: No
Conversion: No

14 Floor 2 - Bath

Dimensions: 7'0" x 8'6"
Area: 58 sq. ft
Counted as Living Area:
Yes

Heated: Yes
Finished: Yes
Enclosed: Yes
Contiguous:
Yes
Permitted: Yes
Wet Space: Yes
Addition: No
Conversion: No

1423 Spadina Crescent E, Saskatoon, SK, CA**15 Floor 2 - Porch**

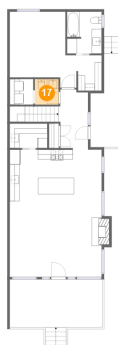
Dimensions: 5'10" x 27'7"
Area: 114 sq. ft
Counted as Living Area: No

Heated: No
Finished: Yes
Enclosed: No
Contiguous: Yes
Permitted: Yes
Wet Space: No
Addition: No
Conversion: No

16 Floor 2 - Dining Area

Dimensions: 8'10" x 16'9"
Area: 148 sq. ft
Counted as Living Area: Yes

Heated: Yes
Finished: Yes
Enclosed: Yes
Contiguous: Yes
Permitted: Yes
Wet Space: No
Addition: No
Conversion: No

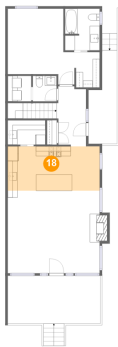
17 Floor 2 - Wc

Dimensions: 4'10" x 5'2"
Area: 25 sq. ft
Counted as Living Area: Yes

Heated: Yes
Finished: Yes
Enclosed: Yes
Contiguous: Yes
Permitted: Yes
Wet Space: Yes
Addition: No
Conversion: No

1423 Spadina Crescent E,Saskatoon,SK,CA

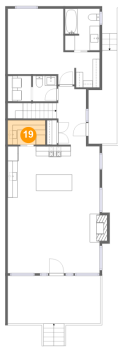
18 Floor 2 - Kitchen



Dimensions: 18'8" x 9'0"
Area: 168 sq. ft
Counted as Living Area:
Yes

Heated: Yes
Finished: Yes
Enclosed: Yes
Contiguous:
Yes
Permitted: Yes
Wet Space: No
Addition: No
Conversion: No

19 Floor 2 - Pantry



Dimensions: 7'7" x 4'11"
Area: 38 sq. ft
Counted as Living Area:
Yes

Heated: Yes
Finished: Yes
Enclosed: Yes
Contiguous:
Yes
Permitted: Yes
Wet Space: No
Addition: No
Conversion: No