

2715 Southeast 49th Avenue, Richmond, Portland, Multnomah County, Oregon, United



Property Summary



3 floors



4 bedrooms



2 bathrooms



2,706 total sqft

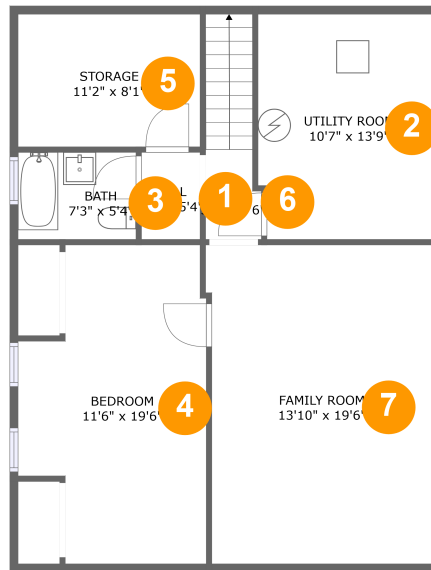


0 garages



2,026 Gross Living Area sqft

2715 Southeast 49th Avenue, Richmond, Portland, Multnomah County, Oregon, United



Room Dimensions

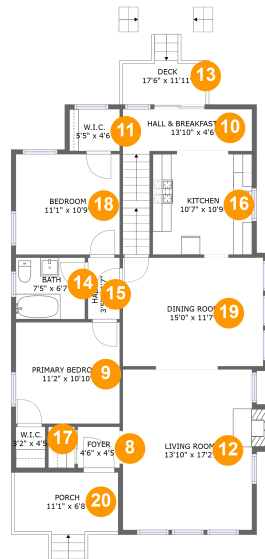
Floor 1

Total sqft: 910

Living area: 653

#	Room name	Dimensions	Area (sqft)	Counted as Living Area
1	Hall	3'7" x 5'4"	19 sq. ft	Yes
2	Utility Room	10'7" x 13'9"	145 sq. ft	No
3	Bath	7'3" x 5'4"	38 sq. ft	Yes
4	Bedroom	11'6" x 19'6"	191 sq. ft	Yes
5	Storage	11'2" x 8'1"	90 sq. ft	No
6	Hall	3'5" x 5'6"	41 sq. ft	Yes
7	Family Room	13'10" x 19'6"	264 sq. ft	Yes

2715 Southeast 49th Avenue, Richmond, Portland, Multnomah County, Oregon, United



Room Dimensions

Floor 2

Total sqft: 1326

Living area: 1094

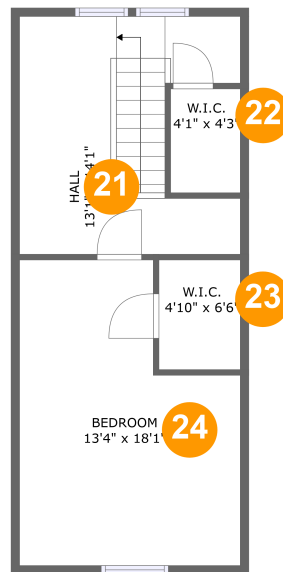
#	Room name	Dimensions	Area (sqft)	Counted as Living Area
8	Foyer	4'6" x 4'5"	20 sq. ft	Yes
9	Primary Bedroom	11'2" x 10'10"	121 sq. ft	Yes
10	Hall & Breakfast Nook	13'10" x 4'6"	94 sq. ft	Yes
11	W.i.c.	5'5" x 4'6"	24 sq. ft	No
12	Living Room	13'10" x 17'2"	246 sq. ft	Yes
13	Deck	17'6" x 11'11"	112 sq. ft	No
14	Bath	7'5" x 6'7"	49 sq. ft	Yes
15	Hall	3'5" x 6'7"	22 sq. ft	Yes
16	Kitchen	10'7" x 10'9"	114 sq. ft	Yes
17	W.i.c.	3'2" x 4'5"	14 sq. ft	Yes

Scan captured on Wed, 01 May 2024 19:32:36 GMT

Information is calculated by CubiCasa technology; deemed highly reliable but not guaranteed.

**2715 Southeast 49th Avenue, Richmond,
Portland, Multnomah County, Oregon, United**

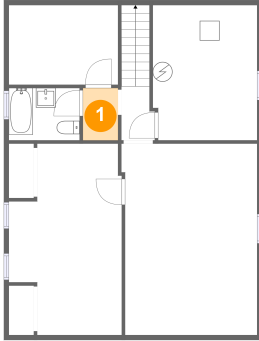
#	Room name	Dimensions	Area (sqft)	Counted as Living Area
18	Bedroom	11'1" x 10'9"	120 sq. ft	Yes
19	Dining Room	15'0" x 11'7"	175 sq. ft	Yes
20	Porch	11'1" x 6'8"	81 sq. ft	No

**2715 Southeast 49th Avenue, Richmond,
Portland, Multnomah County, Oregon, United****Room Dimensions****Floor 3****Total sqft: 470****Living area: 279**

#	Room name	Dimensions	Area (sqft)	Counted as Living Area
21	Hall	13'1" x 14'1"	103 sq. ft	Yes
22	W.i.c.	4'1" x 4'3"	12 sq. ft	Yes
23	W.i.c.	4'10" x 6'6"	17 sq. ft	Yes
24	Bedroom	13'4" x 18'1"	131 sq. ft	Yes

2715 Southeast 49th Avenue, Richmond, Portland, Multnomah County, Oregon, United

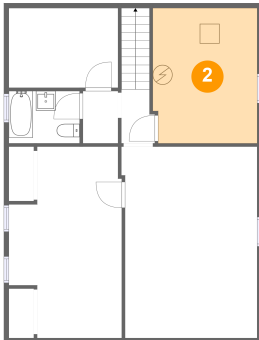
1 Floor 1 - Hall



Dimensions: 3'7" x 5'4"
Area: 19 sq. ft
Counted as Living Area:
Yes

Heated: Yes
Finished: Yes
Enclosed: Yes
Contiguous:
Yes
Permitted: Yes
Wet Space: No
Addition: No
Conversion: No

2 Floor 1 - Utility Room

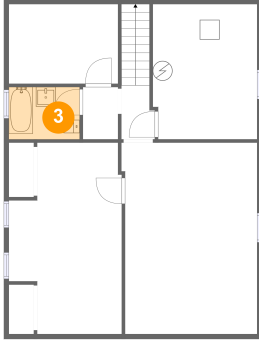


Dimensions: 10'7" x 13'9"
Area: 145 sq. ft
Counted as Living Area: No

Heated: No
Finished: No
Enclosed: Yes
Contiguous: Yes
Permitted: Yes
Wet Space: No
Addition: No
Conversion: No

2715 Southeast 49th Avenue, Richmond, Portland, Multnomah County, Oregon, United

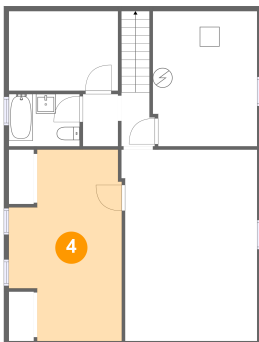
3 Floor 1 - Bath



Dimensions: 7'3" x 5'4"
Area: 38 sq. ft
Counted as Living Area:
Yes

Heated: Yes
Finished: Yes
Enclosed: Yes
Contiguous:
Yes
Permitted: Yes
Wet Space: Yes
Addition: No
Conversion: No

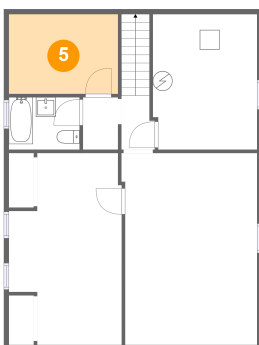
4 Floor 1 - Bedroom



Dimensions: 11'6" x 19'6"
Area: 191 sq. ft
Counted as Living Area:
Yes

Heated: Yes
Finished: Yes
Enclosed: Yes
Contiguous:
Yes
Permitted: Yes
Wet Space: No
Addition: No
Conversion: No

5 Floor 1 - Storage

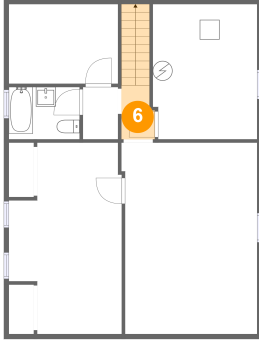


Dimensions: 11'2" x 8'1"
Area: 90 sq. ft
Counted as Living Area: No

Heated: No
Finished: No
Enclosed: No
Contiguous: Yes
Permitted: Yes
Wet Space: No
Addition: No
Conversion: No

2715 Southeast 49th Avenue, Richmond, Portland, Multnomah County, Oregon, United

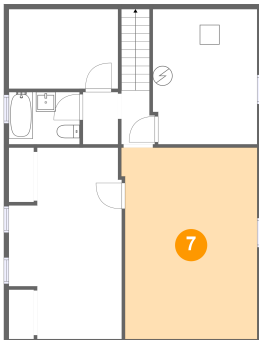
6 Floor 1 - Hall



Dimensions: 3'5" x 5'6"
Area: 41 sq. ft
Counted as Living Area:
Yes

Heated: Yes
Finished: Yes
Enclosed: Yes
Contiguous:
Yes
Permitted: Yes
Wet Space: No
Addition: No
Conversion: No

7 Floor 1 - Family Room



Dimensions: 13'10" x 19'6"
Area: 264 sq. ft
Counted as Living Area:
Yes

Heated: Yes
Finished: Yes
Enclosed: Yes
Contiguous:
Yes
Permitted: Yes
Wet Space: No
Addition: No
Conversion: No

8 Floor 2 - Foyer

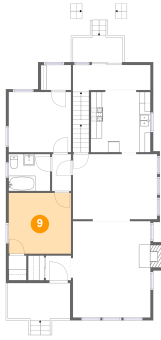


Dimensions: 4'6" x 4'5"
Area: 20 sq. ft
Counted as Living Area:
Yes

Heated: Yes
Finished: Yes
Enclosed: Yes
Contiguous:
Yes
Permitted: Yes
Wet Space: No
Addition: No
Conversion: No

2715 Southeast 49th Avenue, Richmond, Portland, Multnomah County, Oregon, United

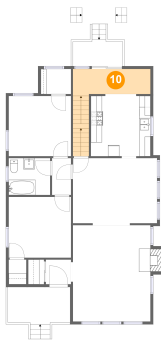
9 Floor 2 - Primary Bedroom



Dimensions: 11'2" x 10'10"
Area: 121 sq. ft
Counted as Living Area:
Yes

Heated: Yes
Finished: Yes
Enclosed: Yes
Contiguous:
Yes
Permitted: Yes
Wet Space: No
Addition: No
Conversion: No

10 Floor 2 - Hall & Breakfast Nook



Dimensions: 13'10" x 4'6"
Area: 94 sq. ft
Counted as Living Area:
Yes

Heated: Yes
Finished: Yes
Enclosed: Yes
Contiguous:
Yes
Permitted: Yes
Wet Space: No
Addition: No
Conversion: No

11 Floor 2 - W.i.c.

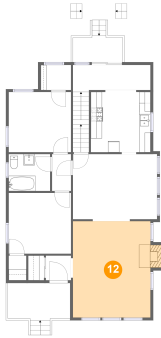


Dimensions: 5'5" x 4'6"
Area: 24 sq. ft
Counted as Living Area: No

Heated: Yes
Finished: Yes
Enclosed: Yes
Contiguous: Yes
Permitted: Yes
Wet Space: No
Addition: No
Conversion: No

2715 Southeast 49th Avenue, Richmond, Portland, Multnomah County, Oregon, United

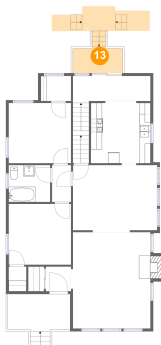
12 Floor 2 - Living Room



Dimensions: 13'10" x 17'2"
Area: 246 sq. ft
Counted as Living Area:
Yes

Heated: Yes
Finished: Yes
Enclosed: Yes
Contiguous:
Yes
Permitted: Yes
Wet Space: No
Addition: No
Conversion: No

13 Floor 2 - Deck



Dimensions: 17'6" x 11'11"
Area: 112 sq. ft
Counted as Living Area: No

Heated: No
Finished: Yes
Enclosed: No
Contiguous: Yes
Permitted: Yes
Wet Space: No
Addition: No
Conversion: No

14 Floor 2 - Bath

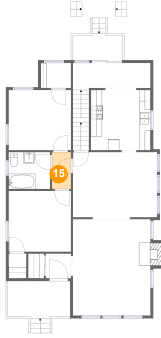


Dimensions: 7'5" x 6'7"
Area: 49 sq. ft
Counted as Living Area:
Yes

Heated: Yes
Finished: Yes
Enclosed: Yes
Contiguous:
Yes
Permitted: Yes
Wet Space: Yes
Addition: No
Conversion: No

2715 Southeast 49th Avenue, Richmond, Portland, Multnomah County, Oregon, United

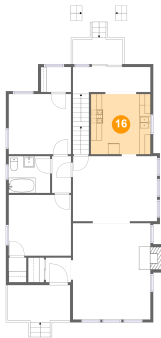
15 Floor 2 - Hall



Dimensions: 3'5" x 6'7"
Area: 22 sq. ft
Counted as Living Area:
Yes

Heated: Yes
Finished: Yes
Enclosed: Yes
Contiguous:
Yes
Permitted: Yes
Wet Space: No
Addition: No
Conversion: No

16 Floor 2 - Kitchen



Dimensions: 10'7" x 10'9"
Area: 114 sq. ft
Counted as Living Area:
Yes

Heated: Yes
Finished: Yes
Enclosed: Yes
Contiguous:
Yes
Permitted: Yes
Wet Space: No
Addition: No
Conversion: No

17 Floor 2 - W.i.c.



Dimensions: 3'2" x 4'5"
Area: 14 sq. ft
Counted as Living Area:
Yes

Heated: Yes
Finished: Yes
Enclosed: Yes
Contiguous:
Yes
Permitted: Yes
Wet Space: No
Addition: No
Conversion: No

2715 Southeast 49th Avenue, Richmond, Portland, Multnomah County, Oregon, United

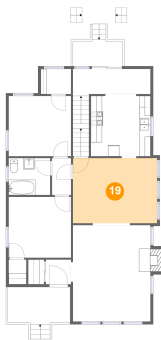
18 Floor 2 - Bedroom



Dimensions: 11'1" x 10'9"
Area: 120 sq. ft
Counted as Living Area:
Yes

Heated: Yes
Finished: Yes
Enclosed: Yes
Contiguous:
Yes
Permitted: Yes
Wet Space: No
Addition: No
Conversion: No

19 Floor 2 - Dining Room



Dimensions: 15'0" x 11'7"
Area: 175 sq. ft
Counted as Living Area:
Yes

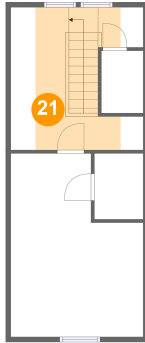
Heated: Yes
Finished: Yes
Enclosed: Yes
Contiguous:
Yes
Permitted: Yes
Wet Space: No
Addition: No
Conversion: No

20 Floor 2 - Porch



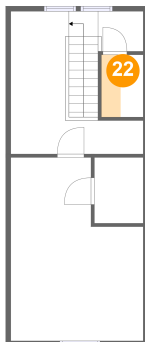
Dimensions: 11'1" x 6'8"
Area: 81 sq. ft
Counted as Living Area: No

Heated: No
Finished: Yes
Enclosed: No
Contiguous: Yes
Permitted: Yes
Wet Space: No
Addition: No
Conversion: No

**2715 Southeast 49th Avenue, Richmond,
Portland, Multnomah County, Oregon, United****21 Floor 3 - Hall**

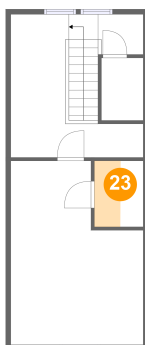
Dimensions: 13'1" x 14'1"
Area: 103 sq. ft
Counted as Living Area:
Yes

Heated: Yes
Finished: Yes
Enclosed: Yes
Contiguous:
Yes
Permitted: Yes
Wet Space: No
Addition: No
Conversion: No

22 Floor 3 - W.i.c.

Dimensions: 4'1" x 4'3"
Area: 12 sq. ft
Counted as Living Area:
Yes

Heated: Yes
Finished: Yes
Enclosed: Yes
Contiguous:
Yes
Permitted: Yes
Wet Space: No
Addition: No
Conversion: No

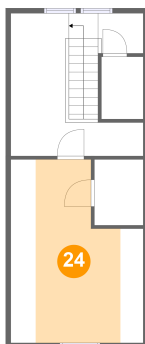
23 Floor 3 - W.i.c.

Dimensions: 4'10" x 6'6"
Area: 17 sq. ft
Counted as Living Area:
Yes

Heated: Yes
Finished: Yes
Enclosed: Yes
Contiguous:
Yes
Permitted: Yes
Wet Space: No
Addition: No
Conversion: No

2715 Southeast 49th Avenue, Richmond, Portland, Multnomah County, Oregon, United

24 Floor 3 - Bedroom



Dimensions: 13'4" x 18'1"
Area: 131 sq. ft
Counted as Living Area:
Yes

Heated: Yes
Finished: Yes
Enclosed: Yes
Contiguous:
Yes
Permitted: Yes
Wet Space: No
Addition: No
Conversion: No