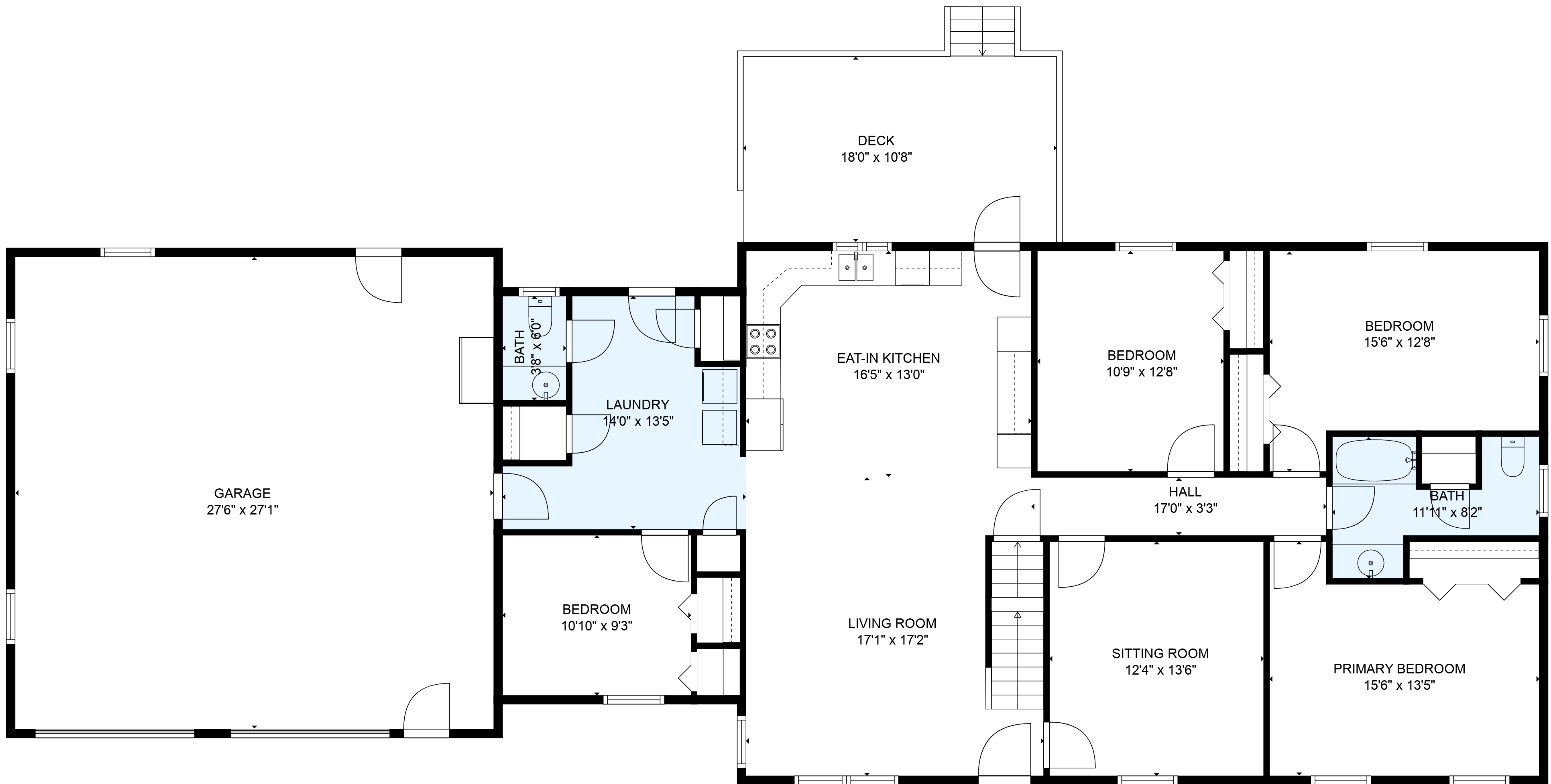


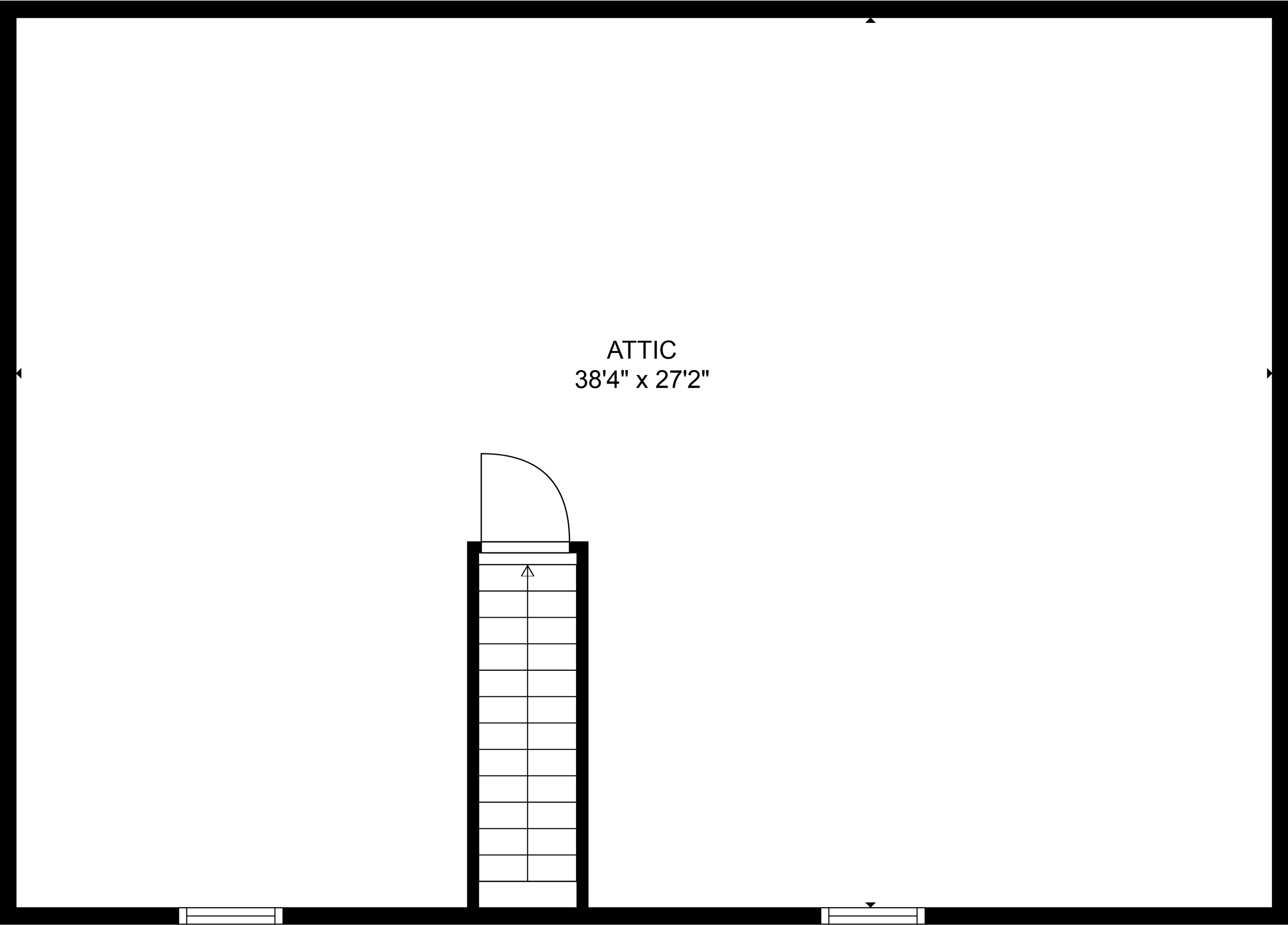
TOTAL: 2670 sq. ft  
BELOW GROUND: 929 sq. ft, FLOOR 2: 1700 sq. ft, FLOOR 3: 41 sq. ft  
EXCLUDED AREAS: STORAGE: 237 sq. ft, ELECTRICAL ROOM: 241 sq. ft, GARAGE: 748 sq. ft,  
DECK: 203 sq. ft, LOW CEILING: 367 sq. ft, ATTIC: 634 sq. ft

MEASUREMENTS ARE DEEMED RELIABLE BUT ARE NOT GUARANTEED.



TOTAL: 2670 sq. ft  
BELOW GROUND: 929 sq. ft, FLOOR 2: 1700 sq. ft, FLOOR 3: 41 sq. ft  
EXCLUDED AREAS: STORAGE: 237 sq. ft, ELECTRICAL ROOM: 241 sq. ft, GARAGE: 748 sq. ft,  
DECK: 203 sq. ft, LOW CEILING: 367 sq. ft, ATTIC: 634 sq. ft

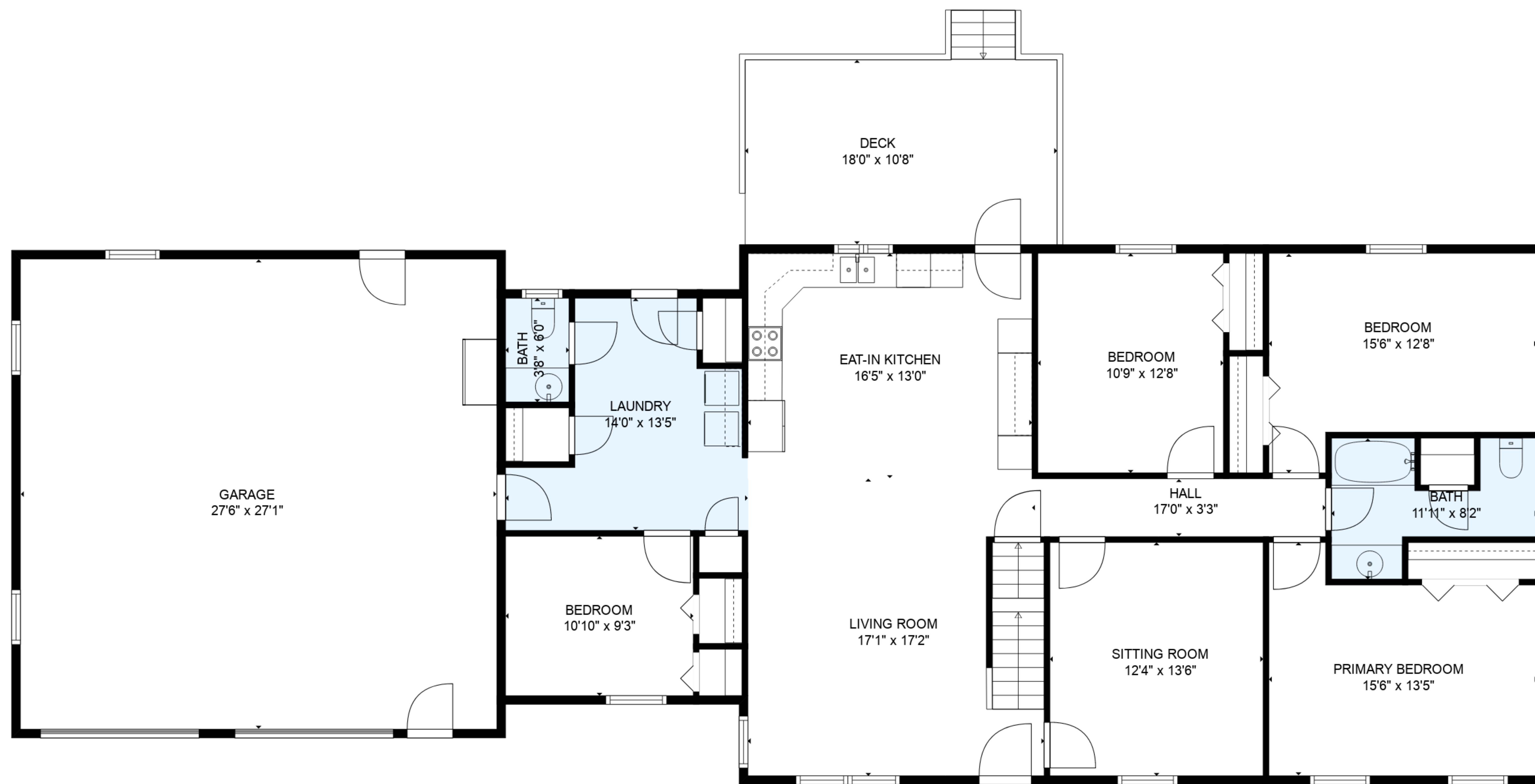
MEASUREMENTS ARE DEEMED RELIABLE BUT ARE NOT GUARANTEED.



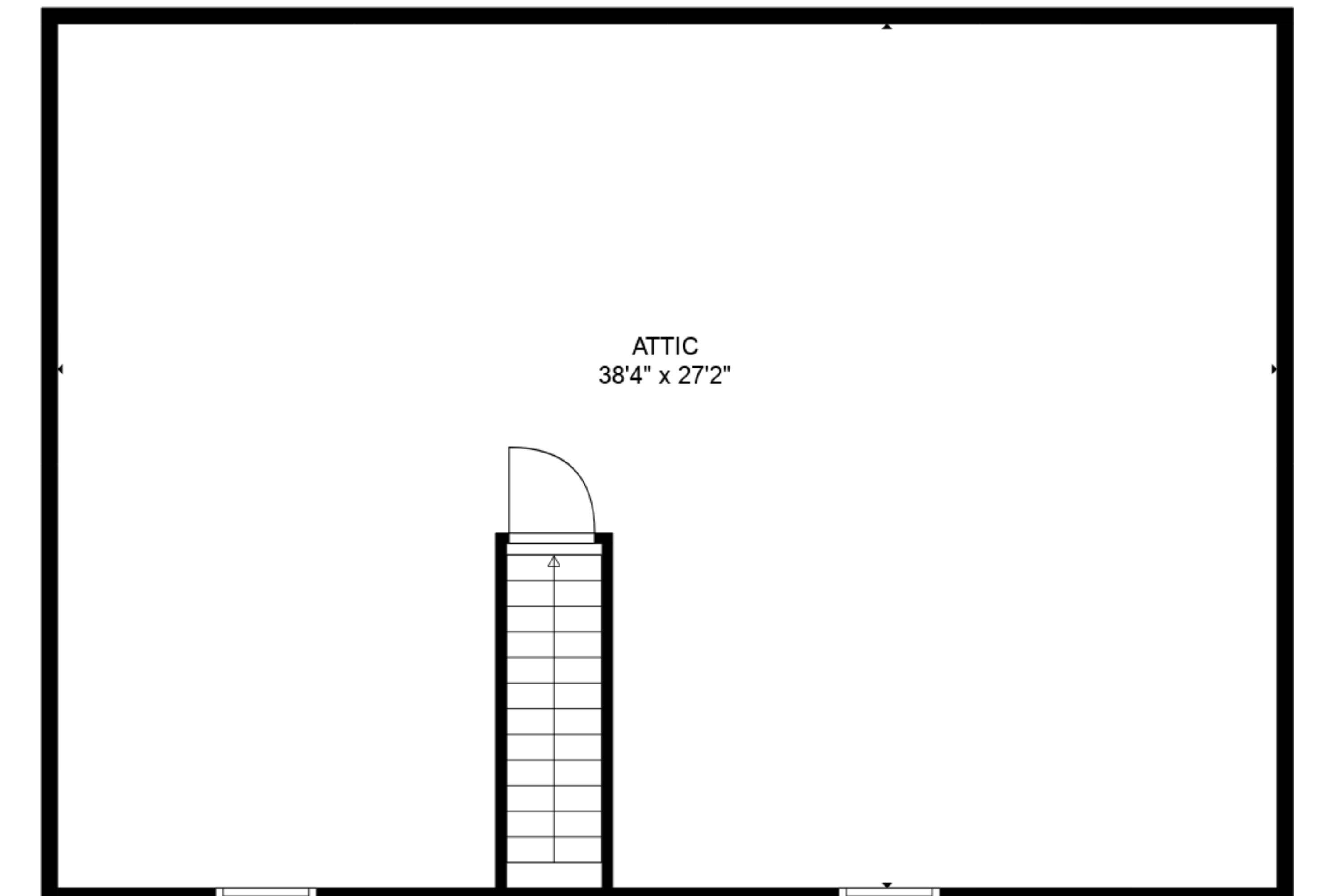
TOTAL: 2670 sq. ft  
BELOW GROUND: 929 sq. ft, FLOOR 2: 1700 sq. ft, FLOOR 3: 41 sq. ft  
EXCLUDED AREAS: STORAGE: 237 sq. ft, ELECTRICAL ROOM: 241 sq. ft, GARAGE: 748 sq. ft,  
DECK: 203 sq. ft, LOW CEILING: 367 sq. ft, ATTIC: 634 sq. ft

MEASUREMENTS ARE DEEMED RELIABLE BUT ARE NOT GUARANTEED.

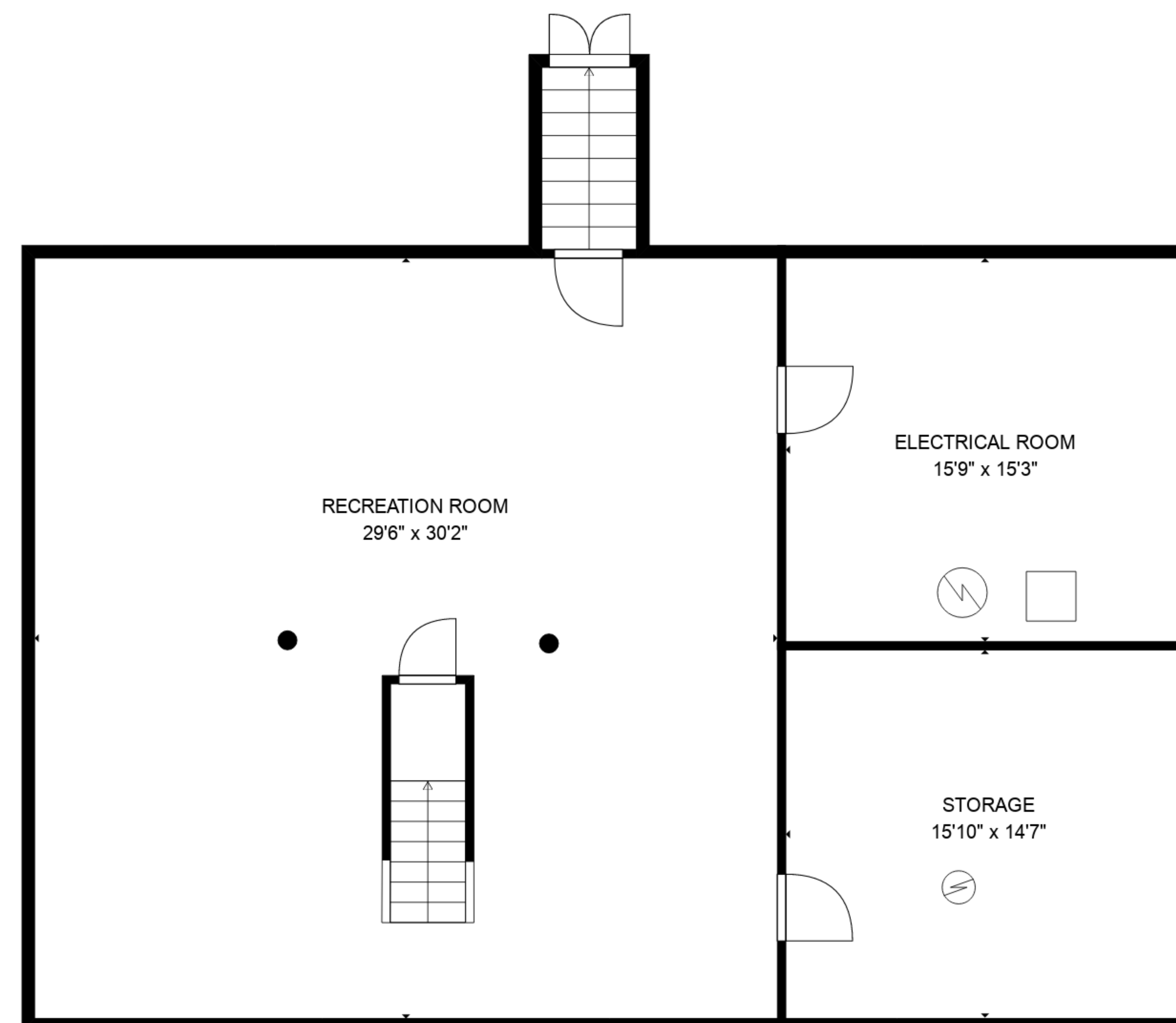




FLOOR 2



FLOOR 3



FLOOR 1

TOTAL: 2670 sq. ft  
 BELOW GROUND: 929 sq. ft, FLOOR 2: 1700 sq. ft, FLOOR 3: 41 sq. ft  
 EXCLUDED AREAS: STORAGE: 237 sq. ft, ELECTRICAL ROOM: 241 sq. ft, GARAGE: 748 sq. ft,  
 DECK: 203 sq. ft, LOW CEILING: 367 sq. ft, ATTIC: 634 sq. ft

MEASUREMENTS ARE DEEMED RELIABLE BUT ARE NOT GUARANTEED.