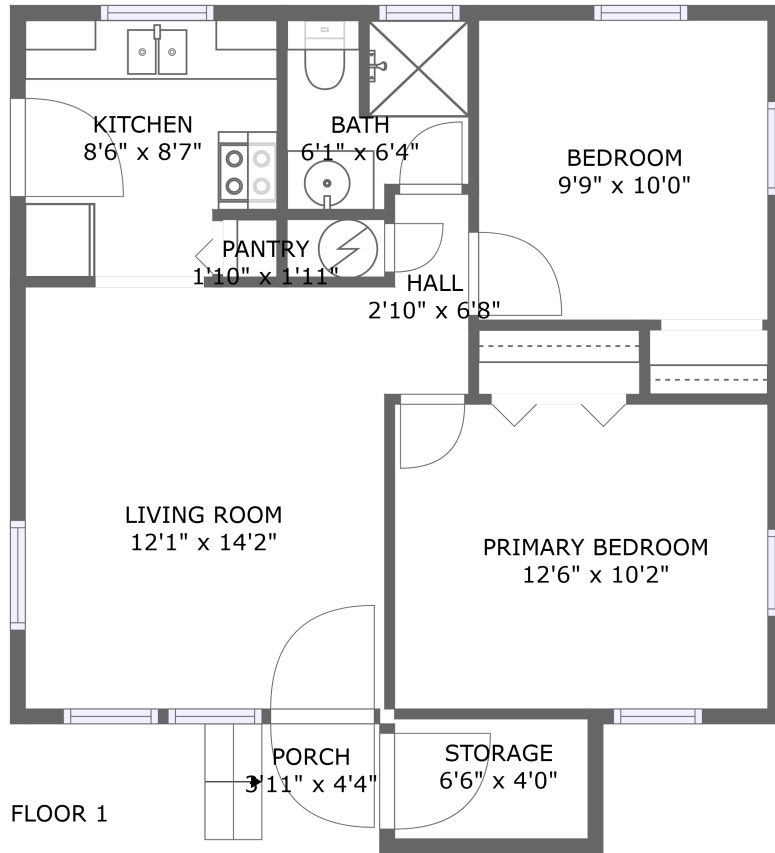


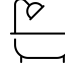
8410 Southeast Flavel Street, Lents, Portland, Multnomah County, Oregon, United States,




Property Summary

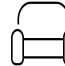
 **0** garages

 **2** bedrooms

 **1** bathrooms

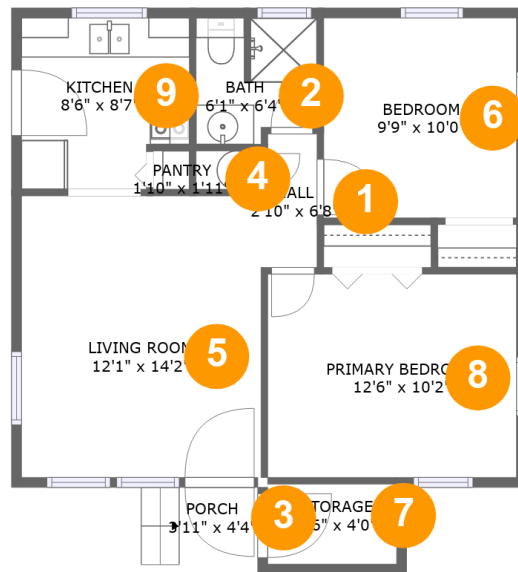
 **0** half baths

 **1** floors

 **625** Gross Living Area sqft

 **685** total sqft

8410 Southeast Flavel Street, Lents, Portland, Multnomah County, Oregon, United States,



Room Dimensions

Floor 1

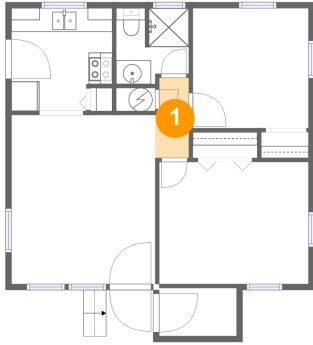
Total sqft: 685

Living area: 625

#	Room name	Dimensions	Area (sqft)	Counted as Living Area
1	Hall	2'10" x 6'8"	18 sq. ft	Yes
2	Bath	6'1" x 6'4"	35 sq. ft	Yes
3	Porch	3'11" x 4'4"	26 sq. ft	No
4	Pantry	1'10" x 1'11"	4 sq. ft	Yes
5	Living Room	12'1" x 14'2"	171 sq. ft	Yes
6	Bedroom	9'9" x 10'0"	98 sq. ft	Yes
7	Storage	6'6" x 4'0"	26 sq. ft	No
8	Primary Bedroom	12'6" x 10'2"	128 sq. ft	Yes
9	Kitchen	8'6" x 8'7"	68 sq. ft	Yes

8410 Southeast Flavel Street, Lents, Portland, Multnomah County, Oregon, United States,

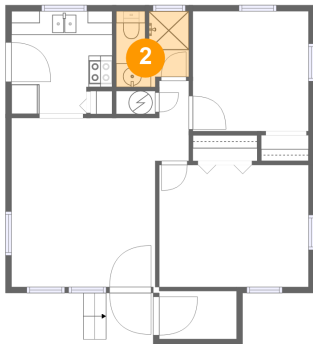
1 Floor 1 - Hall



Dimensions: 2'10" x 6'8"
Area: 18 sq. ft
Counted as Living Area:
Yes

Heated: Yes
Finished: Yes
Enclosed: Yes
Contiguous:
Yes
Permitted: Yes
Wet Space: No
Addition: No
Conversion: No

2 Floor 1 - Bath

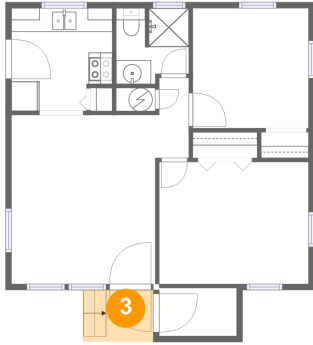


Dimensions: 6'1" x 6'4"
Area: 35 sq. ft
Counted as Living Area:
Yes

Heated: Yes
Finished: Yes
Enclosed: Yes
Contiguous:
Yes
Permitted: Yes
Wet Space: Yes
Addition: No
Conversion: No

8410 Southeast Flavel Street, Lents, Portland, Multnomah County, Oregon, United States,

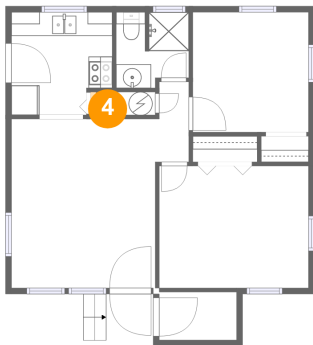
3 Floor 1 - Porch



Dimensions: 3'11" x 4'4"
Area: 26 sq. ft
Counted as Living Area: No

Heated: No
Finished: Yes
Enclosed: No
Contiguous: Yes
Permitted: Yes
Wet Space: No
Addition: No
Conversion: No

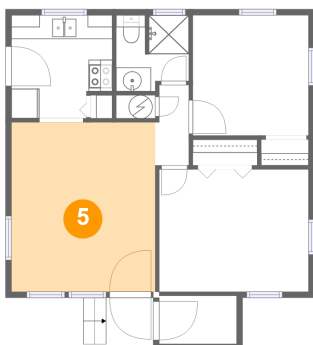
4 Floor 1 - Pantry



Dimensions: 1'10" x 1'11"
Area: 4 sq. ft
Counted as Living Area:
Yes

Heated: Yes
Finished: Yes
Enclosed: Yes
Contiguous:
Yes
Permitted: Yes
Wet Space: No
Addition: No
Conversion: No

5 Floor 1 - Living Room

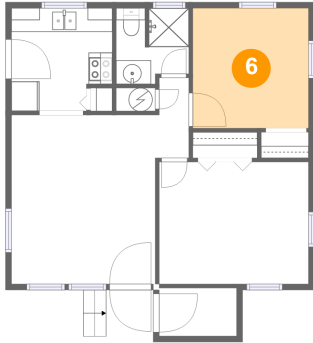


Dimensions: 12'1" x 14'2"
Area: 171 sq. ft
Counted as Living Area:
Yes

Heated: Yes
Finished: Yes
Enclosed: Yes
Contiguous:
Yes
Permitted: Yes
Wet Space: No
Addition: No
Conversion: No

8410 Southeast Flavel Street, Lents, Portland, Multnomah County, Oregon, United States,

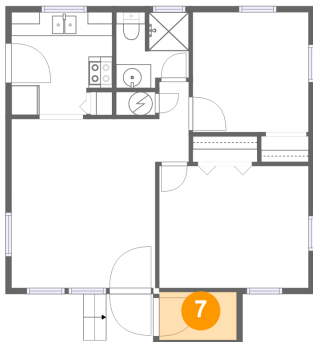
6 Floor 1 - Bedroom



Dimensions: 9'9" x 10'0"
Area: 98 sq. ft
Counted as Living Area:
Yes

Heated: Yes
Finished: Yes
Enclosed: Yes
Contiguous:
Yes
Permitted: Yes
Wet Space: No
Addition: No
Conversion: No

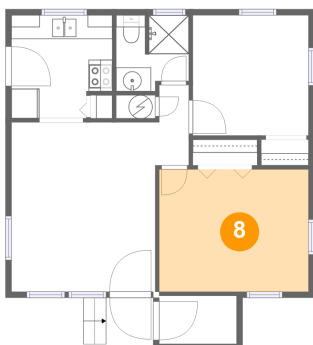
7 Floor 1 - Storage



Dimensions: 6'6" x 4'0"
Area: 26 sq. ft
Counted as Living Area: No

Heated: No
Finished: No
Enclosed: No
Contiguous: Yes
Permitted: Yes
Wet Space: No
Addition: No
Conversion: No

8 Floor 1 - Primary Bedroom

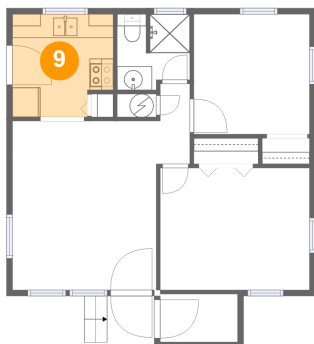


Dimensions: 12'6" x 10'2"
Area: 128 sq. ft
Counted as Living Area:
Yes

Heated: Yes
Finished: Yes
Enclosed: Yes
Contiguous:
Yes
Permitted: Yes
Wet Space: No
Addition: No
Conversion: No

8410 Southeast Flavel Street, Lents, Portland, Multnomah County, Oregon, United States,

9 Floor 1 - Kitchen



Dimensions: 8'6" x 8'7"
Area: 68 sq. ft
Counted as Living Area:
Yes

Heated: Yes
Finished: Yes
Enclosed: Yes
Contiguous:
Yes
Permitted: Yes
Wet Space: No
Addition: No
Conversion: No