



Home report


508 North 65th Street, Rutherford Heights, Rutherford, Swatara,
Dauphin County, Pennsylvania, United States, 17111




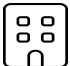
Property summary


 **1** Garages


 **3** Bedrooms

 **1** Bathrooms

 **0** Half baths

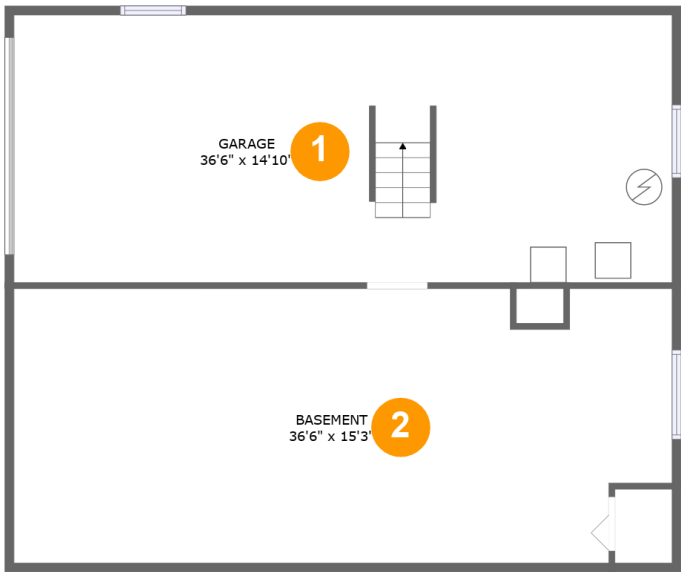
 **2** Floors

 **1,177** Gross living area sqft

 **2,707** Total sqft

Home report

508 North 65th Street, Rutherford Heights, Rutherford, Swatara,
Dauphin County, Pennsylvania, United States, 17111



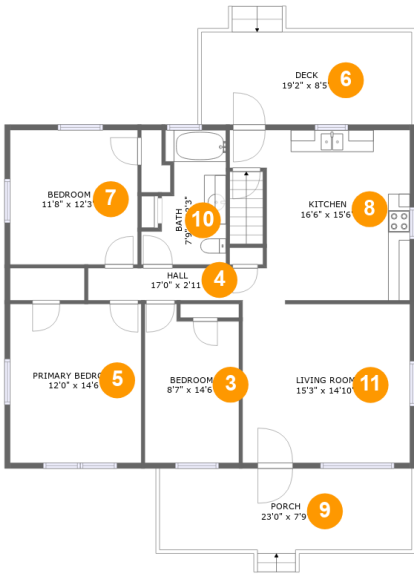
Room dimensions

Floor 1 Total sqft: 1179 Living area: 0

#		Dimensions	sqft	Counted as living area
1	Garage	36'6" x 14'10"	542 sq. ft	No
2	Basement	36'6" x 15'3"	532 sq. ft	No

Home report

508 North 65th Street, Rutherford Heights, Rutherford, Swatara,
Dauphin County, Pennsylvania, United States, 17111

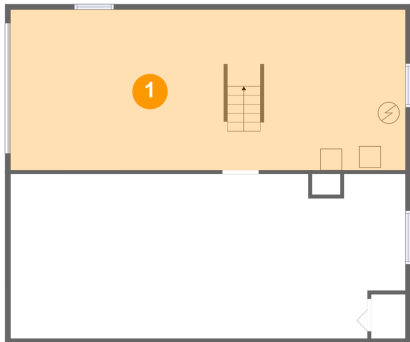


Room dimensions

Floor 2 Total sqft: 1528 Living area: 1177

#		Dimensions	sqft	Counted as living area
3	Bedroom	8'7" x 14'6"	116 sq. ft	Yes
4	Hall	17'0" x 2'11"	50 sq. ft	Yes
5	Primary Bedroom	12'0" x 14'6"	174 sq. ft	Yes
6	Deck	19'2" x 8'5"	173 sq. ft	No
7	Bedroom	11'8" x 12'3"	143 sq. ft	Yes
8	Kitchen	16'6" x 15'6"	213 sq. ft	Yes
9	Porch	23'0" x 7'9"	178 sq. ft	No
10	Bath	7'9" x 12'3"	73 sq. ft	Yes
11	Living Room	15'3" x 14'10"	223 sq. ft	Yes

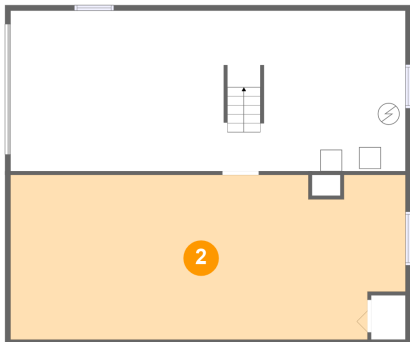
1 Floor 1 - Garage



Dimensions: 36'6" x 14'10"
Area: 542 sq. ft
Counted as living area: No

Heated: No
Finished: No
Enclosed: Yes
Contiguous: Yes
Permitted: Yes
Wet space: No
Addition: No
Conversion: No

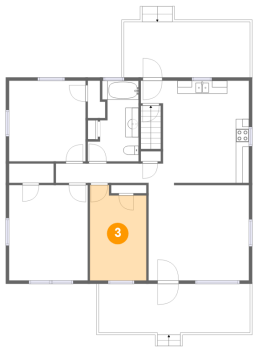
2 Floor 1 - Basement



Dimensions: 36'6" x 15'3"
Area: 532 sq. ft
Counted as living area: No

Heated: Yes
Finished: No
Enclosed: Yes
Contiguous: Yes
Permitted: Yes
Wet space: No
Addition: No
Conversion: No

3 Floor 2 - Bedroom



Dimensions: 8'7" x 14'6"
Area: 116 sq. ft
Counted as living area: Yes

Heated: Yes
Finished: Yes
Enclosed: Yes
Contiguous: Yes
Permitted: Yes
Wet space: No
Addition: No
Conversion: No

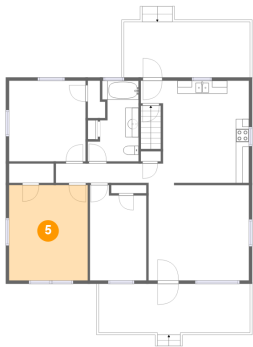
4 Floor 2 - Hall



Dimensions: 17'0" x 2'11"
Area: 50 sq. ft
Counted as living area: Yes

Heated: Yes
Finished: Yes
Enclosed: Yes
Contiguous: Yes
Permitted: Yes
Wet space: No
Addition: No
Conversion: No

5 Floor 2 - Primary Bedroom



Dimensions: 12'0" x 14'6"
Area: 174 sq. ft
Counted as living area: Yes

Heated: Yes
Finished: Yes
Enclosed: Yes
Contiguous: Yes
Permitted: Yes
Wet space: No
Addition: No
Conversion: No

Home report

508 North 65th Street, Rutherford Heights, Rutherford, Swatara,
Dauphin County, Pennsylvania, United States, 17111

6 Floor 2 - Deck



Dimensions: 19'2" x 8'5"
Area: 173 sq. ft
Counted as living area: No

Heated: No
Finished: Yes
Enclosed: No
Contiguous: Yes
Permitted: Yes
Wet space: No
Addition: No
Conversion: No

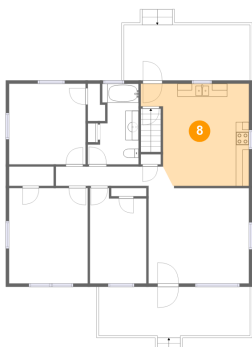
7 Floor 2 - Bedroom



Dimensions: 11'8" x 12'3"
Area: 143 sq. ft
Counted as living area: Yes

Heated: Yes
Finished: Yes
Enclosed: Yes
Contiguous: Yes
Permitted: Yes
Wet space: No
Addition: No
Conversion: No

8 Floor 2 - Kitchen



Dimensions: 16'6" x 15'6"
Area: 213 sq. ft
Counted as living area: Yes

Heated: Yes
Finished: Yes
Enclosed: Yes
Contiguous: Yes
Permitted: Yes
Wet space: No
Addition: No
Conversion: No

508 North 65th Street, Rutherford Heights, Rutherford, Swatara,
Dauphin County, Pennsylvania, United States, 17111

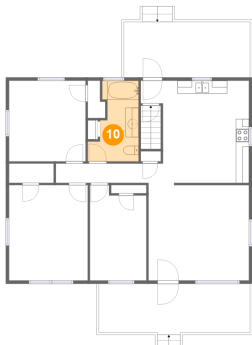
9 Floor 2 - Porch



Dimensions: 23'0" x 7'9"
Area: 178 sq. ft
Counted as living area: No

Heated: No
Finished: Yes
Enclosed: No
Contiguous: Yes
Permitted: Yes
Wet space: No
Addition: No
Conversion: No

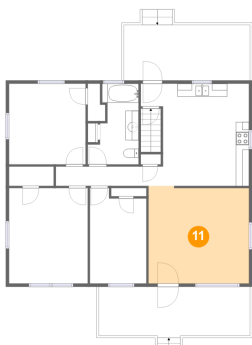
10 Floor 2 - Bath



Dimensions: 7'9" x 12'3"
Area: 73 sq. ft
Counted as living area: Yes

Heated: Yes
Finished: Yes
Enclosed: Yes
Contiguous: Yes
Permitted: Yes
Wet space: Yes
Addition: No
Conversion: No

11 Floor 2 - Living Room



Dimensions: 15'3" x 14'10"
Area: 223 sq. ft
Counted as living area: Yes

Heated: Yes
Finished: Yes
Enclosed: Yes
Contiguous: Yes
Permitted: Yes
Wet space: No
Addition: No
Conversion: No