

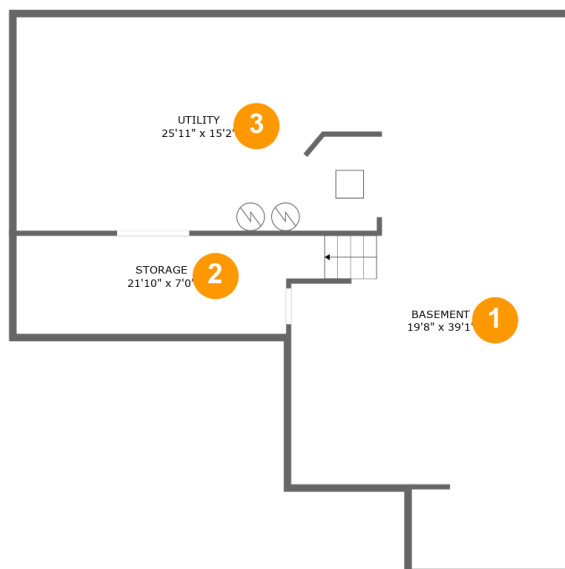
1515 Flag Day Drive, Batavia, Kane County, Illinois, United States, 60510



Property Summary

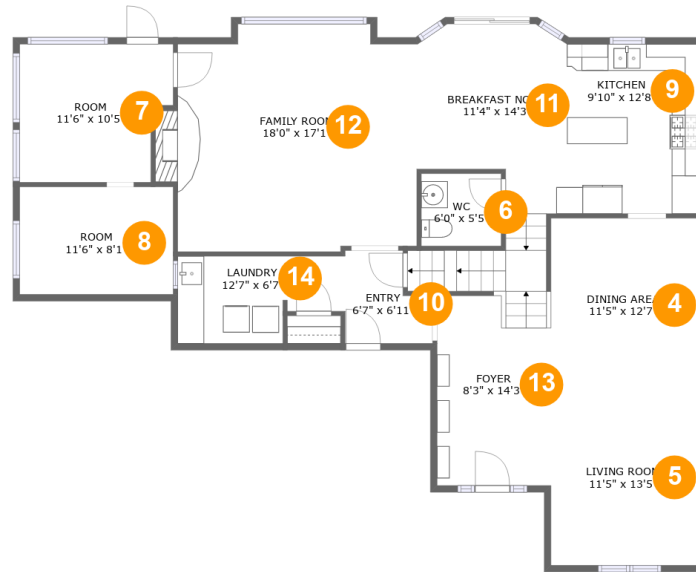
0 garages **6** bedrooms **2** bathrooms **1** half baths

4 floors **3,287** Gross Living Area sqft **4,976** total sqft

**1515 Flag Day Drive, Batavia, Kane County,
Illinois, United States, 60510****Room Dimensions****Floor 1****Total sqft: 1235****Living area: 0**

#	Room name	Dimensions	Area (sqft)	Counted as Living Area
1	Basement	19'8" x 39'1"	607 sq. ft	No
2	Storage	21'10" x 7'0"	142 sq. ft	No
3	Utility	25'11" x 15'2"	393 sq. ft	No

1515 Flag Day Drive, Batavia, Kane County, Illinois, United States, 60510



Room Dimensions

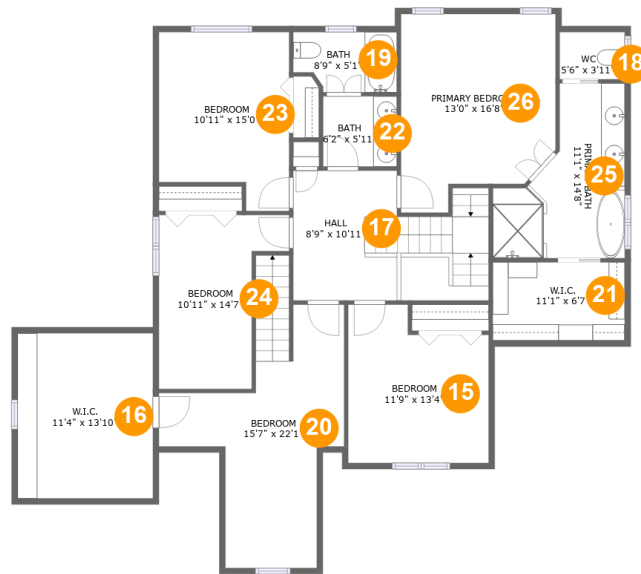
Floor 2

Total sqft: 1500

Living area: 1272

#	Room name	Dimensions	Area (sqft)	Counted as Living Area
4	Dining Area	11'5" x 12'7"	142 sq. ft	Yes
5	Living Room	11'5" x 13'5"	151 sq. ft	Yes
6	Wc	6'0" x 5'5"	33 sq. ft	Yes
7	Room	11'6" x 10'5"	110 sq. ft	No
8	Room	11'6" x 8'1"	93 sq. ft	No
9	Kitchen	9'10" x 12'8"	125 sq. ft	Yes
10	Entry	6'7" x 6'11"	38 sq. ft	Yes
11	Breakfast Nook	11'4" x 14'3"	135 sq. ft	Yes
12	Family Room	18'0" x 17'1"	302 sq. ft	Yes
13	Foyer	8'3" x 14'3"	159 sq. ft	Yes
14	Laundry	12'7" x 6'7"	71 sq. ft	Yes

1515 Flag Day Drive, Batavia, Kane County, Illinois, United States, 60510



Room Dimensions

Floor 3

Total sqft: 1640

Living area: 1572

#	Room name	Dimensions	Area (sqft)	Counted as Living Area
15	Bedroom	11'9" x 13'4"	140 sq. ft	Yes
16	W.i.c.	11'4" x 13'10"	105 sq. ft	No
17	Hall	8'9" x 10'11"	157 sq. ft	Yes
18	Wc	5'6" x 3'11"	22 sq. ft	Yes
19	Bath	8'9" x 5'1"	40 sq. ft	Yes
20	Bedroom	15'7" x 22'1"	213 sq. ft	Yes
21	W.i.c.	11'1" x 6'7"	73 sq. ft	Yes
22	Bath	6'2" x 5'11"	37 sq. ft	Yes
23	Bedroom	10'11" x 15'0"	147 sq. ft	Yes
24	Bedroom	10'11" x 14'7"	123 sq. ft	Yes
25	Primary Bath	11'1" x 14'8"	118 sq. ft	Yes

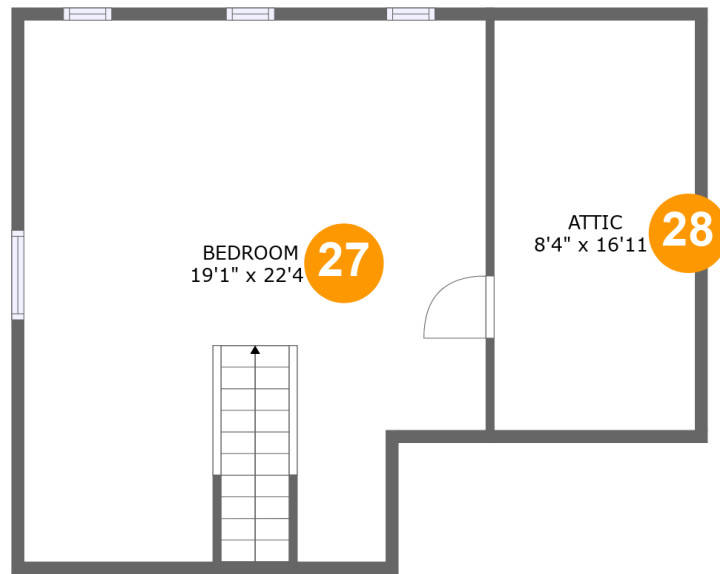
Scan captured on Fri, 25 Oct 2024 19:35:23 GMT

Information is calculated by CubiCasa technology; deemed highly reliable but not guaranteed.

**1515 Flag Day Drive, Batavia, Kane County,
Illinois, United States, 60510**

#	Room name	Dimensions	Area (sqft)	Counted as Living Area
26	Primary Bedroom	13'0" x 16'8"	191 sq. ft	Yes

**1515 Flag Day Drive, Batavia, Kane County,
Illinois, United States, 60510**



Room Dimensions

Floor 4

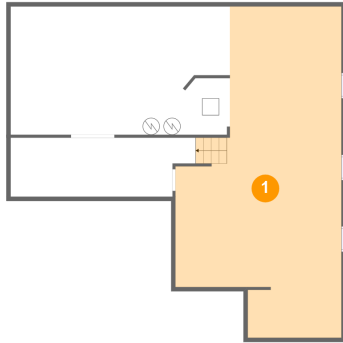
Total sqft: 601

Living area: 443

#	Room name	Dimensions	Area (sqft)	Counted as Living Area
27	Bedroom	19'1" x 22'4"	329 sq. ft	Yes
28	Attic	8'4" x 16'11"	120 sq. ft	No

1515 Flag Day Drive, Batavia, Kane County, Illinois, United States, 60510

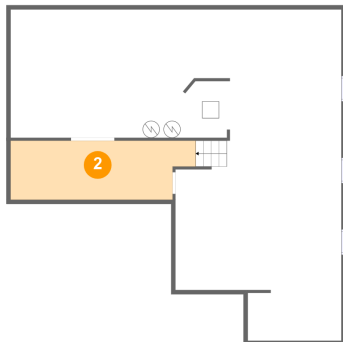
1 Floor 1 - Basement



Dimensions: 19'8" x 39'1"
Area: 607 sq. ft
Counted as Living Area: No

Heated: No
Finished: No
Enclosed: Yes
Contiguous: Yes
Permitted: Yes
Wet Space: No
Addition: No
Conversion: No

2 Floor 1 - Storage

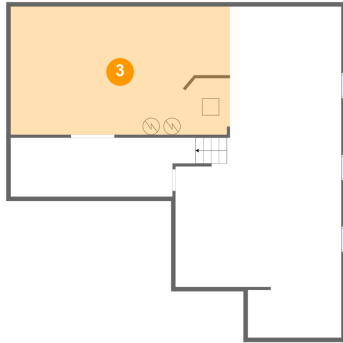


Dimensions: 21'10" x 7'0"
Area: 142 sq. ft
Counted as Living Area: No

Heated: No
Finished: No
Enclosed: No
Contiguous: Yes
Permitted: Yes
Wet Space: No
Addition: No
Conversion: No

1515 Flag Day Drive, Batavia, Kane County, Illinois, United States, 60510

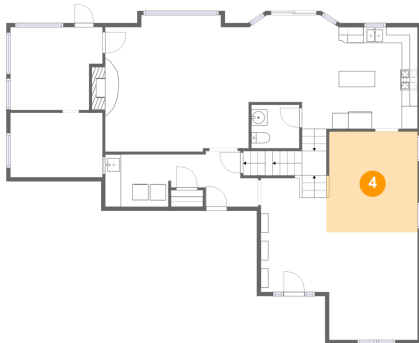
3 Floor 1 - Utility



Dimensions: 25'11" x 15'2"
Area: 393 sq. ft
Counted as Living Area: No

Heated: No
Finished: No
Enclosed: Yes
Contiguous: Yes
Permitted: Yes
Wet Space: No
Addition: No
Conversion: No

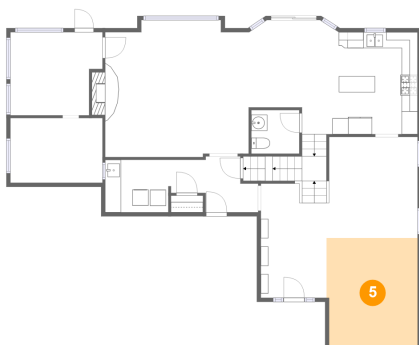
4 Floor 2 - Dining Area



Dimensions: 11'5" x 12'7"
Area: 142 sq. ft
Counted as Living Area:
Yes

Heated: Yes
Finished: Yes
Enclosed: Yes
Contiguous:
Yes
Permitted: Yes
Wet Space: No
Addition: No
Conversion: No

5 Floor 2 - Living Room

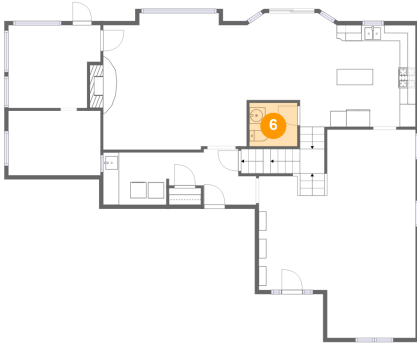


Dimensions: 11'5" x 13'5"
Area: 151 sq. ft
Counted as Living Area:
Yes

Heated: Yes
Finished: Yes
Enclosed: Yes
Contiguous:
Yes
Permitted: Yes
Wet Space: No
Addition: No
Conversion: No

**1515 Flag Day Drive, Batavia, Kane County,
Illinois, United States, 60510**

6 Floor 2 - Wc



Dimensions: 6'0" x 5'5"
Area: 33 sq. ft
Counted as Living Area:
Yes

Heated: Yes
Finished: Yes
Enclosed: Yes
Contiguous:
Yes
Permitted: Yes
Wet Space: Yes
Addition: No
Conversion: No

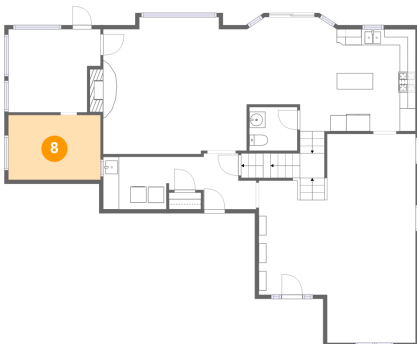
7 Floor 2 - Room



Dimensions: 11'6" x 10'5"
Area: 110 sq. ft
Counted as Living Area: No

Heated: No
Finished: No
Enclosed: Yes
Contiguous: Yes
Permitted: Yes
Wet Space: No
Addition: No
Conversion: No

8 Floor 2 - Room

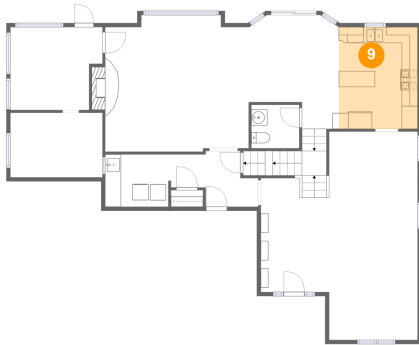


Dimensions: 11'6" x 8'1"
Area: 93 sq. ft
Counted as Living Area: No

Heated: No
Finished: No
Enclosed: Yes
Contiguous: Yes
Permitted: Yes
Wet Space: No
Addition: No
Conversion: No

1515 Flag Day Drive, Batavia, Kane County, Illinois, United States, 60510

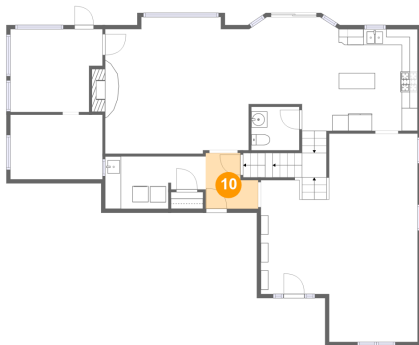
9 Floor 2 - Kitchen



Dimensions: 9'10" x 12'8"
Area: 125 sq. ft
Counted as Living Area:
Yes

Heated: Yes
Finished: Yes
Enclosed: Yes
Contiguous:
Yes
Permitted: Yes
Wet Space: No
Addition: No
Conversion: No

10 Floor 2 - Entry



Dimensions: 6'7" x 6'11"
Area: 38 sq. ft
Counted as Living Area:
Yes

Heated: Yes
Finished: Yes
Enclosed: Yes
Contiguous:
Yes
Permitted: Yes
Wet Space: No
Addition: No
Conversion: No

11 Floor 2 - Breakfast Nook

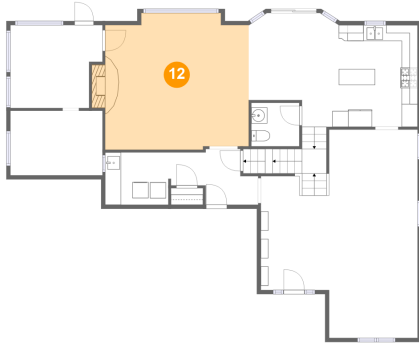


Dimensions: 11'4" x 14'3"
Area: 135 sq. ft
Counted as Living Area:
Yes

Heated: Yes
Finished: Yes
Enclosed: Yes
Contiguous:
Yes
Permitted: Yes
Wet Space: No
Addition: No
Conversion: No

**1515 Flag Day Drive, Batavia, Kane County,
Illinois, United States, 60510**

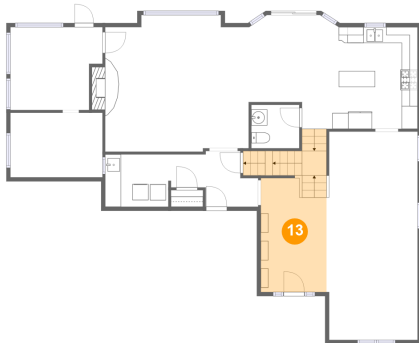
12 Floor 2 - Family Room



Dimensions: 18'0" x 17'1"
Area: 302 sq. ft
Counted as Living Area:
Yes

Heated: Yes
Finished: Yes
Enclosed: Yes
Contiguous:
Yes
Permitted: Yes
Wet Space: No
Addition: No
Conversion: No

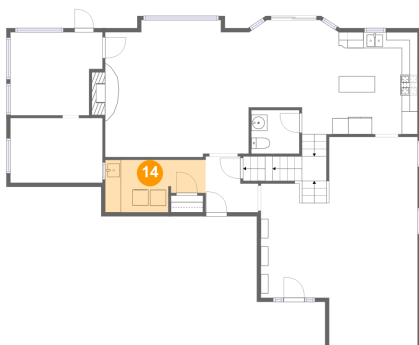
13 Floor 2 - Foyer



Dimensions: 8'3" x 14'3"
Area: 159 sq. ft
Counted as Living Area:
Yes

Heated: Yes
Finished: Yes
Enclosed: Yes
Contiguous:
Yes
Permitted: Yes
Wet Space: No
Addition: No
Conversion: No

14 Floor 2 - Laundry

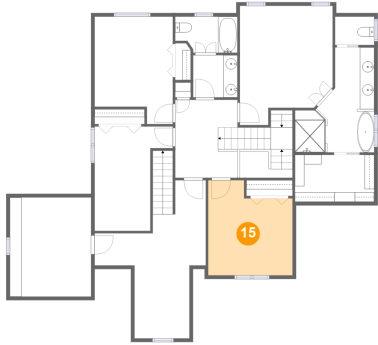


Dimensions: 12'7" x 6'7"
Area: 71 sq. ft
Counted as Living Area:
Yes

Heated: Yes
Finished: Yes
Enclosed: Yes
Contiguous:
Yes
Permitted: Yes
Wet Space: No
Addition: No
Conversion: No

**1515 Flag Day Drive, Batavia, Kane County,
Illinois, United States, 60510**

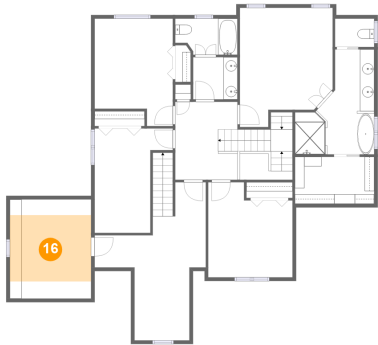
15 Floor 3 - Bedroom



Dimensions: 11'9" x 13'4"
Area: 140 sq. ft
Counted as Living Area:
Yes

Heated: Yes
Finished: Yes
Enclosed: Yes
Contiguous:
Yes
Permitted: Yes
Wet Space: No
Addition: No
Conversion: No

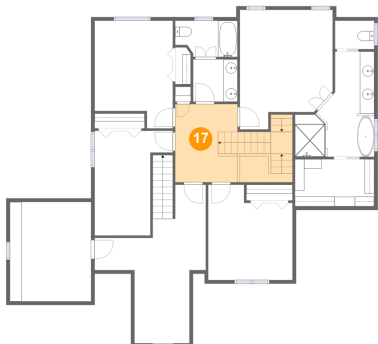
16 Floor 3 - W.i.c.



Dimensions: 11'4" x 13'10"
Area: 105 sq. ft
Counted as Living Area: No

Heated: Yes
Finished: Yes
Enclosed: Yes
Contiguous: Yes
Permitted: Yes
Wet Space: No
Addition: No
Conversion: No

17 Floor 3 - Hall

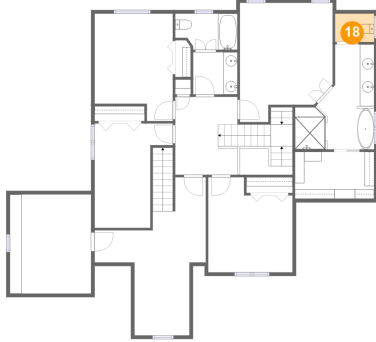


Dimensions: 8'9" x 10'11"
Area: 157 sq. ft
Counted as Living Area:
Yes

Heated: Yes
Finished: Yes
Enclosed: Yes
Contiguous:
Yes
Permitted: Yes
Wet Space: No
Addition: No
Conversion: No

**1515 Flag Day Drive, Batavia, Kane County,
Illinois, United States, 60510**

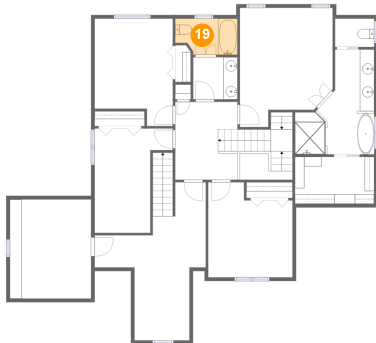
18 Floor 3 - Wc



Dimensions: 5'6" x 3'11"
Area: 22 sq. ft
Counted as Living Area:
Yes

Heated: Yes
Finished: Yes
Enclosed: Yes
Contiguous:
Yes
Permitted: Yes
Wet Space: Yes
Addition: No
Conversion: No

19 Floor 3 - Bath



Dimensions: 8'9" x 5'1"
Area: 40 sq. ft
Counted as Living Area:
Yes

Heated: Yes
Finished: Yes
Enclosed: Yes
Contiguous:
Yes
Permitted: Yes
Wet Space: Yes
Addition: No
Conversion: No

20 Floor 3 - Bedroom

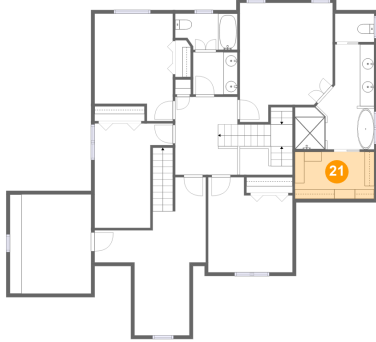


Dimensions: 15'7" x 22'1"
Area: 213 sq. ft
Counted as Living Area:
Yes

Heated: Yes
Finished: Yes
Enclosed: Yes
Contiguous:
Yes
Permitted: Yes
Wet Space: No
Addition: No
Conversion: No

**1515 Flag Day Drive, Batavia, Kane County,
Illinois, United States, 60510**

21 Floor 3 - W.i.c.



Dimensions: 11'1" x 6'7"
Area: 73 sq. ft
Counted as Living Area:
Yes

Heated: Yes
Finished: Yes
Enclosed: Yes
Contiguous:
Yes
Permitted: Yes
Wet Space: No
Addition: No
Conversion: No

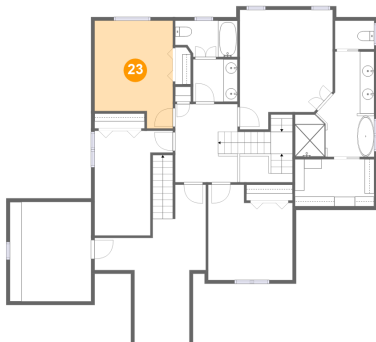
22 Floor 3 - Bath



Dimensions: 6'2" x 5'11"
Area: 37 sq. ft
Counted as Living Area:
Yes

Heated: Yes
Finished: Yes
Enclosed: Yes
Contiguous:
Yes
Permitted: Yes
Wet Space: Yes
Addition: No
Conversion: No

23 Floor 3 - Bedroom

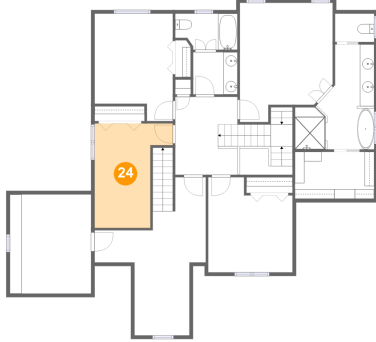


Dimensions: 10'11" x 15'0"
Area: 147 sq. ft
Counted as Living Area:
Yes

Heated: Yes
Finished: Yes
Enclosed: Yes
Contiguous:
Yes
Permitted: Yes
Wet Space: No
Addition: No
Conversion: No

**1515 Flag Day Drive, Batavia, Kane County,
Illinois, United States, 60510**

24 Floor 3 - Bedroom



Dimensions: 10'11" x 14'7"
Area: 123 sq. ft
Counted as Living Area:
Yes

Heated: Yes
Finished: Yes
Enclosed: Yes
Contiguous:
Yes
Permitted: Yes
Wet Space: No
Addition: No
Conversion: No

25 Floor 3 - Primary Bath



Dimensions: 11'1" x 14'8"
Area: 118 sq. ft
Counted as Living Area:
Yes

Heated: Yes
Finished: Yes
Enclosed: Yes
Contiguous:
Yes
Permitted: Yes
Wet Space: Yes
Addition: No
Conversion: No

26 Floor 3 - Primary Bedroom

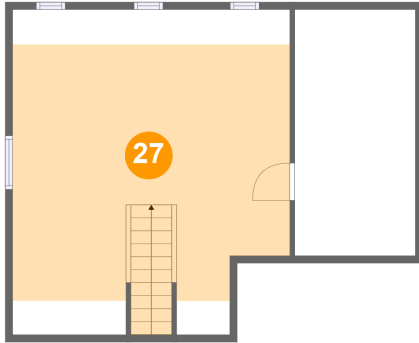


Dimensions: 13'0" x 16'8"
Area: 191 sq. ft
Counted as Living Area:
Yes

Heated: Yes
Finished: Yes
Enclosed: Yes
Contiguous:
Yes
Permitted: Yes
Wet Space: No
Addition: No
Conversion: No

**1515 Flag Day Drive, Batavia, Kane County,
Illinois, United States, 60510**

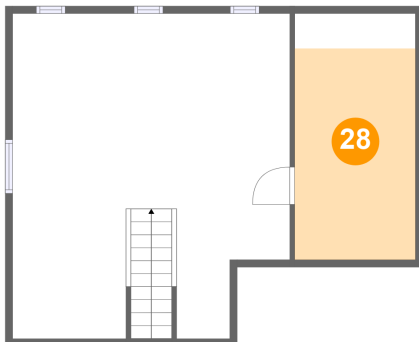
27 Floor 4 - Bedroom



Dimensions: 19'1" x 22'4"
Area: 329 sq. ft
Counted as Living Area:
Yes

Heated: Yes
Finished: Yes
Enclosed: Yes
Contiguous:
Yes
Permitted: Yes
Wet Space: No
Addition: No
Conversion: No

28 Floor 4 - Attic



Dimensions: 8'4" x 16'11"
Area: 120 sq. ft
Counted as Living Area: No

Heated: No
Finished: No
Enclosed: Yes
Contiguous: Yes
Permitted: Yes
Wet Space: No
Addition: No
Conversion: No