

Home report

1844 Southeast 12th Avenue, Hosford-Abernethy, Portland,
Multnomah County, Oregon, United States, 97214



Total Area: 3962 sq. ft

Floor 1: 1039 sq. ft, Floor 2: 1145 sq. ft, Floor 3: 1123 sq. ft, Floor 4: 655 sq. ft

Excluded: Covered patio 55 sq. ft, Fireplace 11 sq. ft, Embedded window 13 sq. ft, Low ceiling 81 sq. ft, Walls: 284 sq. ft

Property summary

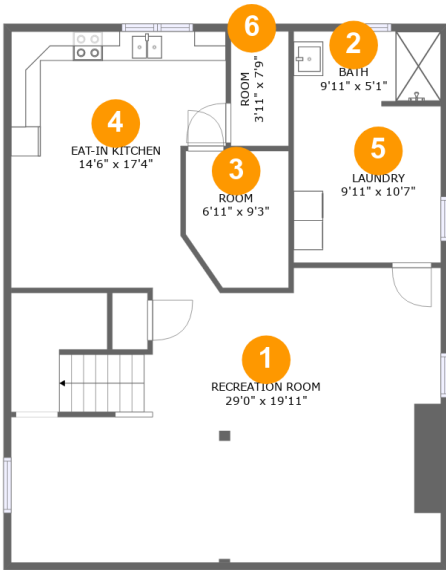
 **4** Floors

 **5** Bedrooms

 **4** Bathrooms

Home report

1844 Southeast 12th Avenue, Hosford-Abernethy, Portland,
Multnomah County, Oregon, United States, 97214



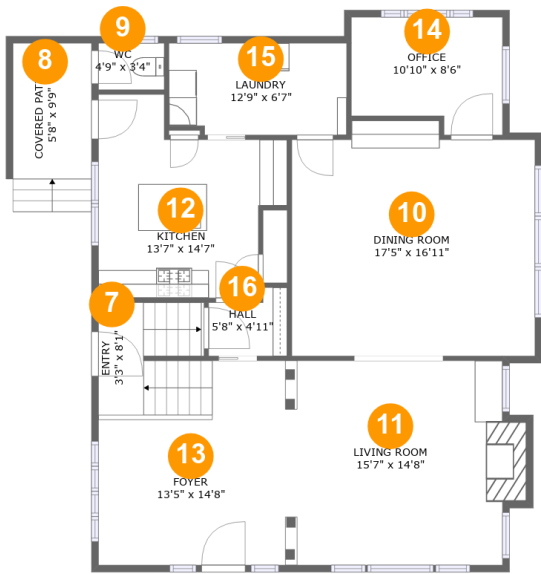
Room dimensions

Floor 1 Total:1039sqft Excluded: 0sqft

#		Max Dimensions	sqft	Included
1	Recreation Room	29'0" x 19'11"	530 sq. ft	Yes
2	Bath	9'11" x 5'1"	49 sq. ft	Yes
3	Room	6'11" x 9'3"	60 sq. ft	Yes
4	Eat-in Kitchen	14'6" x 17'4"	226 sq. ft	Yes
5	Laundry	9'11" x 10'7"	105 sq. ft	Yes
6	Room	3'11" x 7'9"	30 sq. ft	Yes

Home report

1844 Southeast 12th Avenue, Hosford-Abernethy, Portland,
Multnomah County, Oregon, United States, 97214



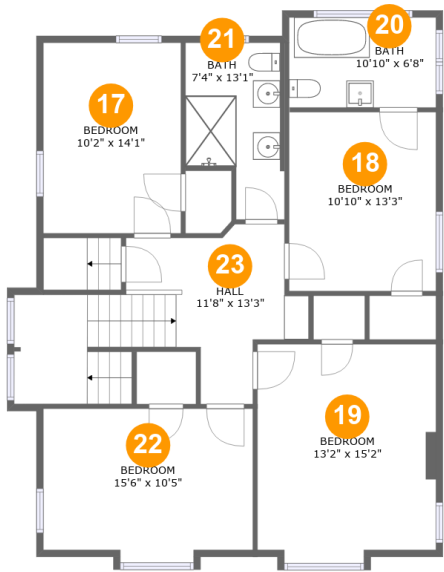
Room dimensions

Floor 2 Total:1145sqft Excluded: 66sqft

#		Max Dimensions	sqft	Included
7	Entry	3'3" x 8'1"	26 sq. ft	Yes
8	Covered Patio	5'8" x 9'9"	55 sq. ft	No
9	WC	4'9" x 3'4"	16 sq. ft	Yes
10	Dining Room	17'5" x 16'11"	280 sq. ft	Yes
11	Living Room	15'7" x 14'8"	238 sq. ft	Yes
12	Kitchen	13'7" x 14'7"	155 sq. ft	Yes
13	Foyer	13'5" x 14'8"	184 sq. ft	Yes
14	Office	10'10" x 8'6"	83 sq. ft	Yes
15	Laundry	12'9" x 6'7"	82 sq. ft	Yes
16	Hall	5'8" x 4'11"	24 sq. ft	Yes

Home report

1844 Southeast 12th Avenue, Hosford-Abernethy, Portland,
Multnomah County, Oregon, United States, 97214



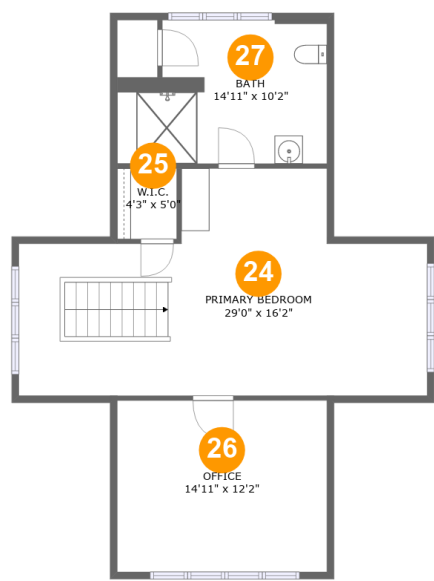
Room dimensions

Floor 3 Total:1123sqft Excluded: 13sqft

#		Max Dimensions	sqft	Included
17	Bedroom	10'2" x 14'1"	143 sq. ft	Yes
18	Bedroom	10'10" x 13'3"	144 sq. ft	Yes
19	Bedroom	13'2" x 15'2"	200 sq. ft	Yes
20	Bath	10'10" x 6'8"	72 sq. ft	Yes
21	Bath	7'4" x 13'1"	81 sq. ft	Yes
22	Bedroom	15'6" x 10'5"	161 sq. ft	Yes
23	Hall	11'8" x 13'3"	187 sq. ft	Yes

Home report

1844 Southeast 12th Avenue, Hosford-Abernethy, Portland,
Multnomah County, Oregon, United States, 97214



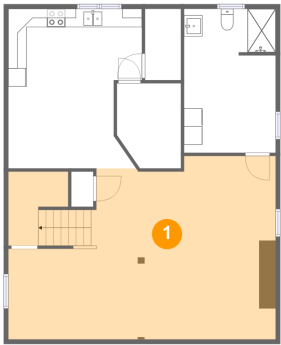
Room dimensions

Floor 4 Total:655sqft Excluded: 81sqft

#		Max Dimensions	sqft	Included
24	Primary Bedroom	29'0" x 16'2"	323 sq. ft	Yes
25	W.I.C.	4'3" x 5'0"	16 sq. ft	Yes
26	Office	14'11" x 12'2"	155 sq. ft	Yes
27	Bath	14'11" x 10'2"	127 sq. ft	Yes

1844 Southeast 12th Avenue, Hosford-Abernethy, Portland,
Multnomah County, Oregon, United States, 97214

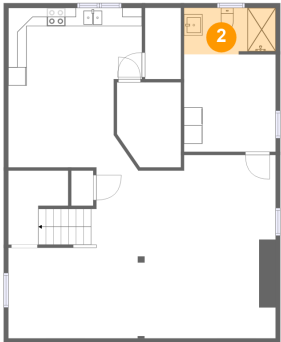
1 Floor 1 - Recreation Room



Max Dimensions: 29'0" x 19'11"
Calculated Area: 530 sq. ft
Included: Yes

Heated: Yes
Finished: Yes
Enclosed: Yes
Contiguous: Yes
Permitted: Yes
Wet space: No
Addition: No
Conversion: No

2 Floor 1 - Bath



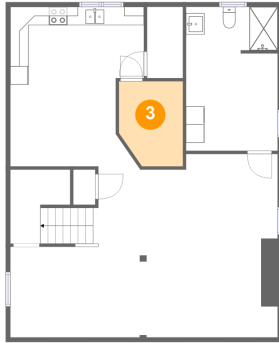
Max Dimensions: 9'11" x 5'1"
Calculated Area: 49 sq. ft
Included: Yes

Heated: Yes
Finished: Yes
Enclosed: Yes
Contiguous: Yes
Permitted: Yes
Wet space: Yes
Addition: No
Conversion: No

Home report

1844 Southeast 12th Avenue, Hosford-Abernethy, Portland,
Multnomah County, Oregon, United States, 97214

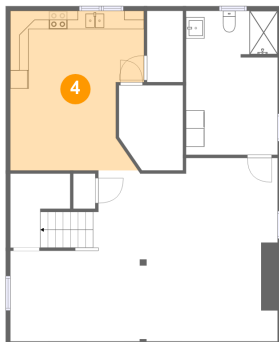
3 Floor 1 - Room



Max Dimensions: 6'11" x 9'3"
Calculated Area: 60 sq. ft
Included: Yes

Heated: Yes
Finished: Yes
Enclosed: Yes
Contiguous: Yes
Permitted: Yes
Wet space: No
Addition: No
Conversion: No

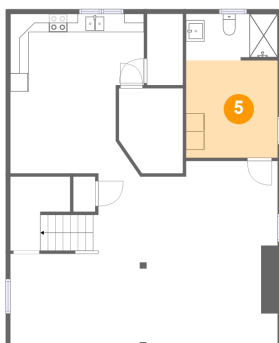
4 Floor 1 - Eat-in Kitchen



Max Dimensions: 14'6" x 17'4"
Calculated Area: 226 sq. ft
Included: Yes

Heated: Yes
Finished: Yes
Enclosed: Yes
Contiguous: Yes
Permitted: Yes
Wet space: No
Addition: No
Conversion: No

5 Floor 1 - Laundry

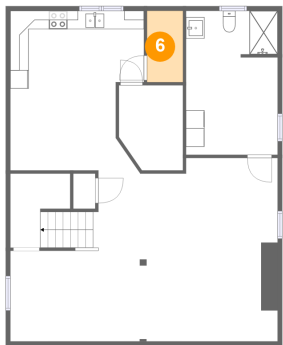


Max Dimensions: 9'11" x 10'7"
Calculated Area: 105 sq. ft
Included: Yes

Heated: Yes
Finished: Yes
Enclosed: Yes
Contiguous: Yes
Permitted: Yes
Wet space: No
Addition: No
Conversion: No

1844 Southeast 12th Avenue, Hosford-Abernethy, Portland,
Multnomah County, Oregon, United States, 97214

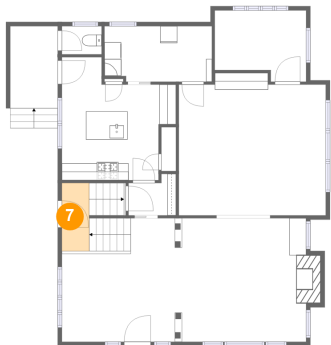
6 Floor 1 - Room



Max Dimensions: 3'11" x 7'9"
Calculated Area: 30 sq. ft
Included: Yes

Heated: Yes
Finished: Yes
Enclosed: Yes
Contiguous: Yes
Permitted: Yes
Wet space: No
Addition: No
Conversion: No

7 Floor 2 - Entry



Max Dimensions: 3'3" x 8'1"
Calculated Area: 26 sq. ft
Included: Yes

Heated: Yes
Finished: Yes
Enclosed: Yes
Contiguous: Yes
Permitted: Yes
Wet space: No
Addition: No
Conversion: No

8 Floor 2 - Covered Patio

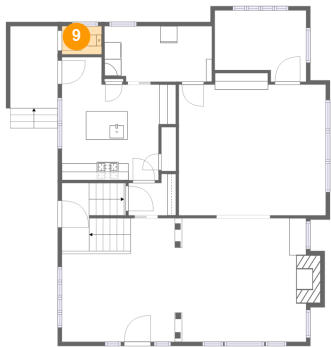


Max Dimensions: 5'8" x 9'9"
Calculated Area: 55 sq. ft
Included: No

Heated: No
Finished: Yes
Enclosed: No
Contiguous: Yes
Permitted: Yes
Wet space: No
Addition: No
Conversion: No

1844 Southeast 12th Avenue, Hosford-Abernethy, Portland,
Multnomah County, Oregon, United States, 97214

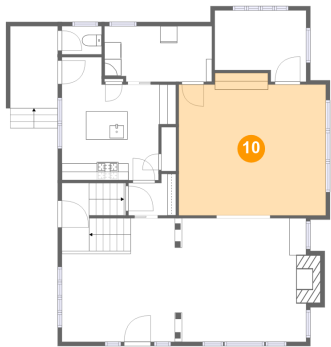
9 Floor 2 - WC



Max Dimensions: 4'9" x 3'4"
Calculated Area: 16 sq. ft
Included: Yes

Heated: Yes
Finished: Yes
Enclosed: Yes
Contiguous: Yes
Permitted: Yes
Wet space: Yes
Addition: No
Conversion: No

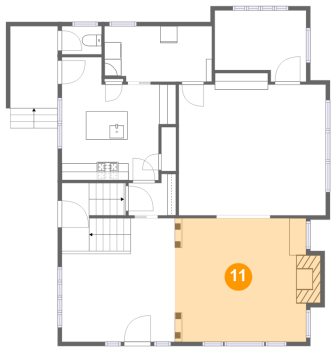
10 Floor 2 - Dining Room



Max Dimensions: 17'5" x 16'11"
Calculated Area: 280 sq. ft
Included: Yes

Heated: Yes
Finished: Yes
Enclosed: Yes
Contiguous: Yes
Permitted: Yes
Wet space: No
Addition: No
Conversion: No

11 Floor 2 - Living Room

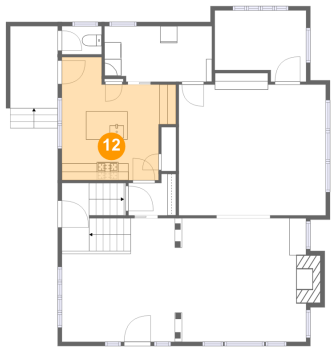


Max Dimensions: 15'7" x 14'8"
Calculated Area: 238 sq. ft
Included: Yes

Heated: Yes
Finished: Yes
Enclosed: Yes
Contiguous: Yes
Permitted: Yes
Wet space: No
Addition: No
Conversion: No

1844 Southeast 12th Avenue, Hosford-Abernethy, Portland,
Multnomah County, Oregon, United States, 97214

12 Floor 2 - Kitchen



Max Dimensions: 13'7" x 14'7"
Calculated Area: 155 sq. ft
Included: Yes

Heated: Yes
Finished: Yes
Enclosed: Yes
Contiguous: Yes
Permitted: Yes
Wet space: No
Addition: No
Conversion: No

13 Floor 2 - Foyer



Max Dimensions: 13'5" x 14'8"
Calculated Area: 184 sq. ft
Included: Yes

Heated: Yes
Finished: Yes
Enclosed: Yes
Contiguous: Yes
Permitted: Yes
Wet space: No
Addition: No
Conversion: No

14 Floor 2 - Office

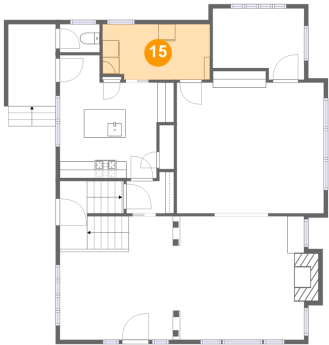


Max Dimensions: 10'10" x 8'6"
Calculated Area: 83 sq. ft
Included: Yes

Heated: Yes
Finished: Yes
Enclosed: Yes
Contiguous: Yes
Permitted: Yes
Wet space: No
Addition: No
Conversion: No

1844 Southeast 12th Avenue, Hosford-Abernethy, Portland,
Multnomah County, Oregon, United States, 97214

15 Floor 2 - Laundry



Max Dimensions: 12'9" x 6'7"
Calculated Area: 82 sq. ft
Included: Yes

Heated: Yes
Finished: Yes
Enclosed: Yes
Contiguous: Yes
Permitted: Yes
Wet space: No
Addition: No
Conversion: No

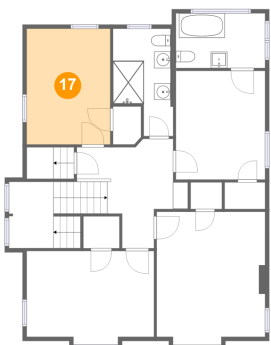
16 Floor 2 - Hall



Max Dimensions: 5'8" x 4'11"
Calculated Area: 24 sq. ft
Included: Yes

Heated: Yes
Finished: Yes
Enclosed: Yes
Contiguous: Yes
Permitted: Yes
Wet space: No
Addition: No
Conversion: No

17 Floor 3 - Bedroom



Max Dimensions: 10'2" x 14'1"
Calculated Area: 143 sq. ft
Included: Yes

Heated: Yes
Finished: Yes
Enclosed: Yes
Contiguous: Yes
Permitted: Yes
Wet space: No
Addition: No
Conversion: No

1844 Southeast 12th Avenue, Hosford-Abernethy, Portland,
Multnomah County, Oregon, United States, 97214

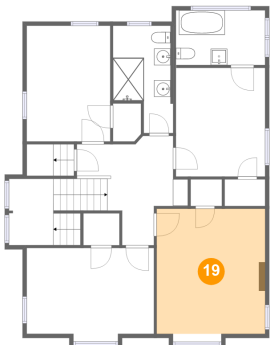
18 Floor 3 - Bedroom



Max Dimensions: 10'10" x 13'3"
Calculated Area: 144 sq. ft
Included: Yes

Heated: Yes
Finished: Yes
Enclosed: Yes
Contiguous: Yes
Permitted: Yes
Wet space: No
Addition: No
Conversion: No

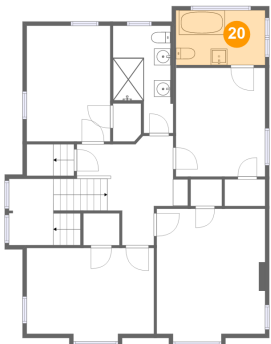
19 Floor 3 - Bedroom



Max Dimensions: 13'2" x 15'2"
Calculated Area: 200 sq. ft
Included: Yes

Heated: Yes
Finished: Yes
Enclosed: Yes
Contiguous: Yes
Permitted: Yes
Wet space: No
Addition: No
Conversion: No

20 Floor 3 - Bath

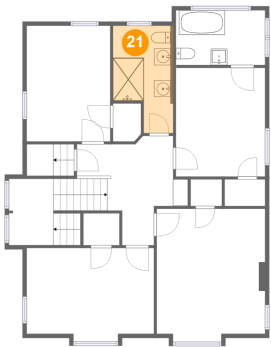


Max Dimensions: 10'10" x 6'8"
Calculated Area: 72 sq. ft
Included: Yes

Heated: Yes
Finished: Yes
Enclosed: Yes
Contiguous: Yes
Permitted: Yes
Wet space: Yes
Addition: No
Conversion: No

1844 Southeast 12th Avenue, Hosford-Abernethy, Portland,
Multnomah County, Oregon, United States, 97214

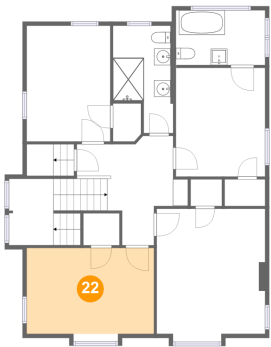
21 Floor 3 - Bath



Max Dimensions: 7'4" x 13'1"
Calculated Area: 81 sq. ft
Included: Yes

Heated: Yes
Finished: Yes
Enclosed: Yes
Contiguous: Yes
Permitted: Yes
Wet space: Yes
Addition: No
Conversion: No

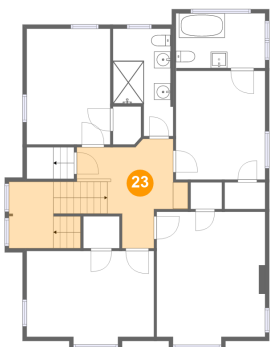
22 Floor 3 - Bedroom



Max Dimensions: 15'6" x 10'5"
Calculated Area: 161 sq. ft
Included: Yes

Heated: Yes
Finished: Yes
Enclosed: Yes
Contiguous: Yes
Permitted: Yes
Wet space: No
Addition: No
Conversion: No

23 Floor 3 - Hall

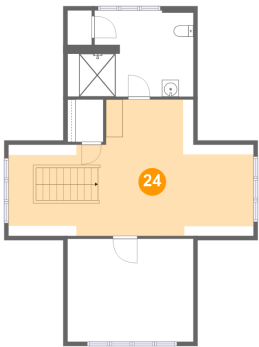


Max Dimensions: 11'8" x 13'3"
Calculated Area: 187 sq. ft
Included: Yes

Heated: Yes
Finished: Yes
Enclosed: Yes
Contiguous: Yes
Permitted: Yes
Wet space: No
Addition: No
Conversion: No

1844 Southeast 12th Avenue, Hosford-Abernethy, Portland,
Multnomah County, Oregon, United States, 97214

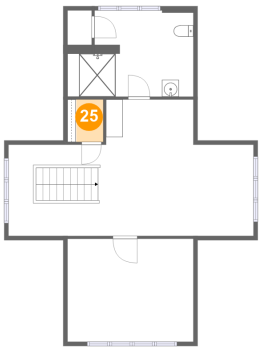
24 Floor 4 - Primary Bedroom



Max Dimensions: 29'0" x 16'2"
Calculated Area: 323 sq. ft
Included: Yes

Heated: Yes
Finished: Yes
Enclosed: Yes
Contiguous: Yes
Permitted: Yes
Wet space: No
Addition: No
Conversion: No

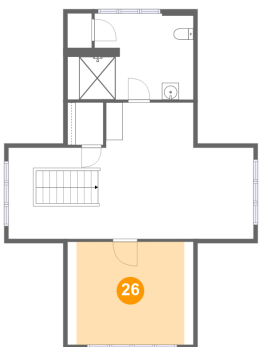
25 Floor 4 - W.I.C.



Max Dimensions: 4'3" x 5'0"
Calculated Area: 16 sq. ft
Included: Yes

Heated: Yes
Finished: Yes
Enclosed: Yes
Contiguous: Yes
Permitted: Yes
Wet space: No
Addition: No
Conversion: No

26 Floor 4 - Office

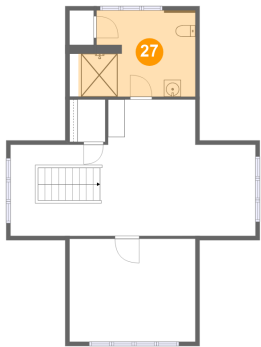


Max Dimensions: 14'11" x 12'2"
Calculated Area: 155 sq. ft
Included: Yes

Heated: Yes
Finished: Yes
Enclosed: Yes
Contiguous: Yes
Permitted: Yes
Wet space: No
Addition: No
Conversion: No

1844 Southeast 12th Avenue, Hosford-Abernethy, Portland,
Multnomah County, Oregon, United States, 97214

27 Floor 4 - Bath



Max Dimensions: 14'11" x 10'2"
Calculated Area: 127 sq. ft
Included: Yes

Heated: Yes
Finished: Yes
Enclosed: Yes
Contiguous: Yes
Permitted: Yes
Wet space: Yes
Addition: No
Conversion: No