

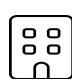
Home data report


1219 Harmony Cir,Spearfish,SD,US





Total Area: 1783 sq. ft
1st Floor: 843 sq. ft, 2nd Floor: 940 sq. ft
Excluded: Utility 92 sq. ft, Garage 594 sq. ft, Walls: 172 sq. ft

Property summary

 **2** Floors

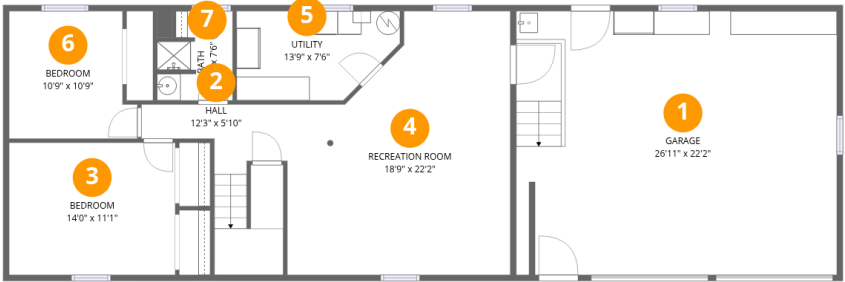
 **4** Bedrooms

 **2** Bathrooms

 **1** Garages

Home data report

1219 Harmony Cir,Spearfish,SD,US



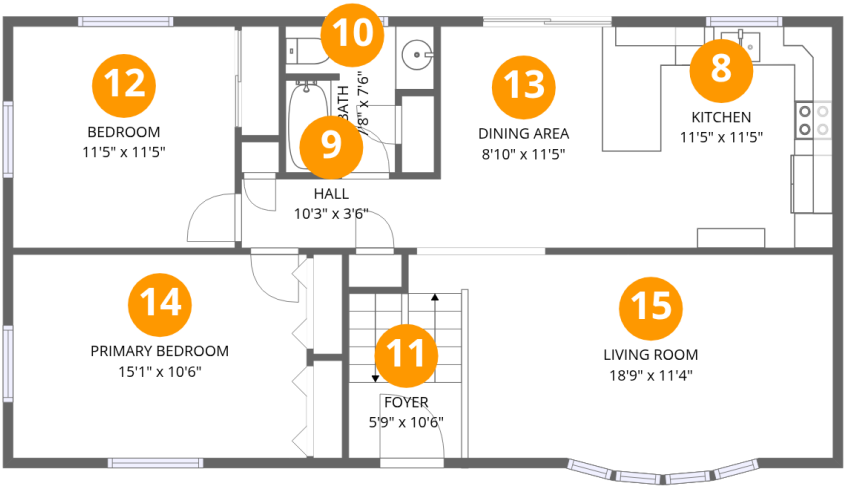
Room dimensions

Floor 1 Total:843sqft Excluded: 686sqft

#		Dimensions	sqft	Counted as living area
1	Garage	26'11" x 22'2"	597 sq. ft	No
2	Hall	12'3" x 5'10"	72 sq. ft	Yes
3	Bedroom	14'0" x 11'1"	155 sq. ft	Yes
4	Recreation Room	18'9" x 22'2"	415 sq. ft	Yes
5	Utility	13'9" x 7'6"	103 sq. ft	No
6	Bedroom	10'9" x 10'9"	116 sq. ft	Yes
7	Bath	6'4" x 7'6"	48 sq. ft	Yes

Home data report

1219 Harmony Cir,Spearfish,SD,US



Room dimensions

Floor 2 Total:940sqft Excluded: 0sqft

#		Dimensions	sqft	Counted as living area
8	Kitchen	11'5" x 11'5"	129 sq. ft	Yes
9	Hall	10'3" x 3'6"	36 sq. ft	Yes
10	Bath	7'8" x 7'6"	57 sq. ft	Yes
11	Foyer	5'9" x 10'6"	60 sq. ft	Yes
12	Bedroom	11'5" x 11'5"	130 sq. ft	Yes
13	Dining Area	8'10" x 11'5"	100 sq. ft	Yes
14	Primary Bedroom	15'1" x 10'6"	158 sq. ft	Yes
15	Living Room	18'9" x 11'4"	212 sq. ft	Yes

1 Floor 1 - Garage



Dimensions: 26'11" x 22'2"
Area: 597 sq. ft
Counted as living area: No

Heated: No
Finished: No
Enclosed: Yes
Contiguous: Yes
Permitted: Yes
Wet space: No
Addition: No
Conversion: No

2 Floor 1 - Hall



Dimensions: 12'3" x 5'10"
Area: 72 sq. ft
Counted as living area: Yes

Heated: Yes
Finished: Yes
Enclosed: Yes
Contiguous: Yes
Permitted: Yes
Wet space: No
Addition: No
Conversion: No

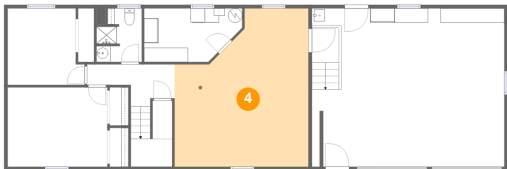
3 Floor 1 - Bedroom



Dimensions: 14'0" x 11'1"
Area: 155 sq. ft
Counted as living area: Yes

Heated: Yes
Finished: Yes
Enclosed: Yes
Contiguous: Yes
Permitted: Yes
Wet space: No
Addition: No
Conversion: No

4 Floor 1 - Recreation Room



Dimensions: 18'9" x 22'2"
Area: 415 sq. ft
Counted as living area: Yes

Heated: Yes
Finished: Yes
Enclosed: Yes
Contiguous: Yes
Permitted: Yes
Wet space: No
Addition: No
Conversion: No

5 Floor 1 - Utility



Dimensions: 13'9" x 7'6"
Area: 103 sq. ft
Counted as living area: No

Heated: Yes
Finished: No
Enclosed: Yes
Contiguous: Yes
Permitted: Yes
Wet space: No
Addition: No
Conversion: No

6 Floor 1 - Bedroom



Dimensions: 10'9" x 10'9"
Area: 116 sq. ft
Counted as living area: Yes

Heated: Yes
Finished: Yes
Enclosed: Yes
Contiguous: Yes
Permitted: Yes
Wet space: No
Addition: No
Conversion: No

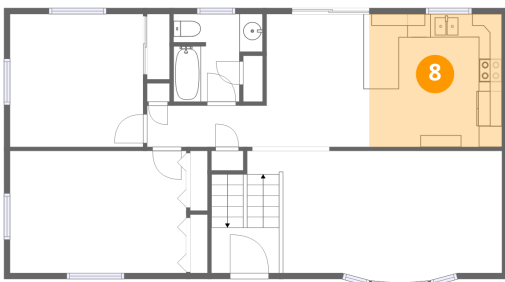
7 Floor 1 - Bath



Dimensions: 6'4" x 7'6"
Area: 48 sq. ft
Counted as living area: Yes

Heated: Yes
Finished: Yes
Enclosed: Yes
Contiguous: Yes
Permitted: Yes
Wet space: Yes
Addition: No
Conversion: No

8 Floor 2 - Kitchen



Dimensions: 11'5" x 11'5"
Area: 129 sq. ft
Counted as living area: Yes

Heated: Yes
Finished: Yes
Enclosed: Yes
Contiguous: Yes
Permitted: Yes
Wet space: No
Addition: No
Conversion: No

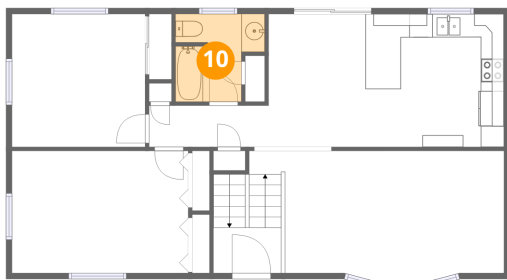
9 Floor 2 - Hall



Dimensions: 10'3" x 3'6"
Area: 36 sq. ft
Counted as living area: Yes

Heated: Yes
Finished: Yes
Enclosed: Yes
Contiguous: Yes
Permitted: Yes
Wet space: No
Addition: No
Conversion: No

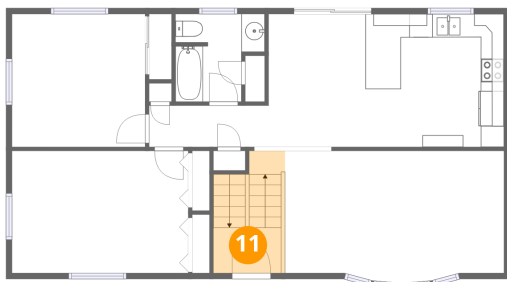
10 Floor 2 - Bath



Dimensions: 7'8" x 7'6"
Area: 57 sq. ft
Counted as living area: Yes

Heated: Yes
Finished: Yes
Enclosed: Yes
Contiguous: Yes
Permitted: Yes
Wet space: Yes
Addition: No
Conversion: No

11 Floor 2 - Foyer



Dimensions: 5'9" x 10'6"
Area: 60 sq. ft
Counted as living area: Yes

Heated: Yes
Finished: Yes
Enclosed: Yes
Contiguous: Yes
Permitted: Yes
Wet space: No
Addition: No
Conversion: No

12 Floor 2 - Bedroom



Dimensions: 11'5" x 11'5"
Area: 130 sq. ft
Counted as living area: Yes

Heated: Yes
Finished: Yes
Enclosed: Yes
Contiguous: Yes
Permitted: Yes
Wet space: No
Addition: No
Conversion: No

13 Floor 2 - Dining Area



Dimensions: 8'10" x 11'5"
Area: 100 sq. ft
Counted as living area: Yes

Heated: Yes
Finished: Yes
Enclosed: Yes
Contiguous: Yes
Permitted: Yes
Wet space: No
Addition: No
Conversion: No

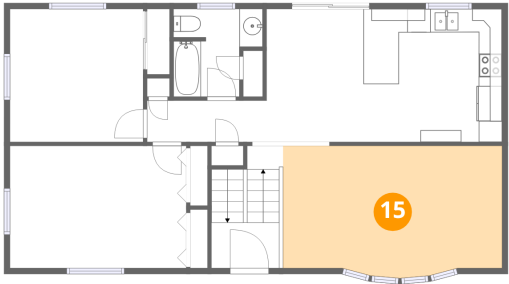
14 Floor 2 - Primary Bedroom



Dimensions: 15'1" x 10'6"
Area: 158 sq. ft
Counted as living area: Yes

Heated: Yes
Finished: Yes
Enclosed: Yes
Contiguous: Yes
Permitted: Yes
Wet space: No
Addition: No
Conversion: No

15 Floor 2 - Living Room



Dimensions: 18'9" x 11'4"
Area: 212 sq. ft
Counted as living area: Yes

Heated: Yes
Finished: Yes
Enclosed: Yes
Contiguous: Yes
Permitted: Yes
Wet space: No
Addition: No
Conversion: No