





# 5009 Cherokee Hills Drive, Cherokee Hills, Salem, Roanoke County, Virginia, United States,

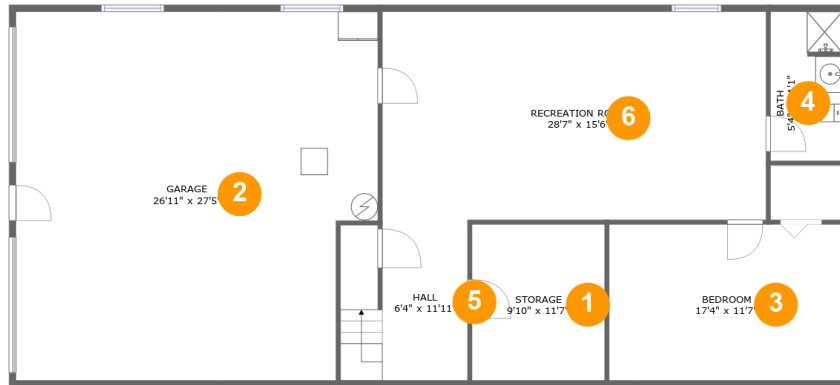


## Property Summary

 **1** garages     **4** bedrooms     **3** bathrooms     **0** half baths

 **2** floors     **2,696** Gross Living Area sqft     **4,625** total sqft

# 5009 Cherokee Hills Drive, Cherokee Hills, Salem, Roanoke County, Virginia, United States,

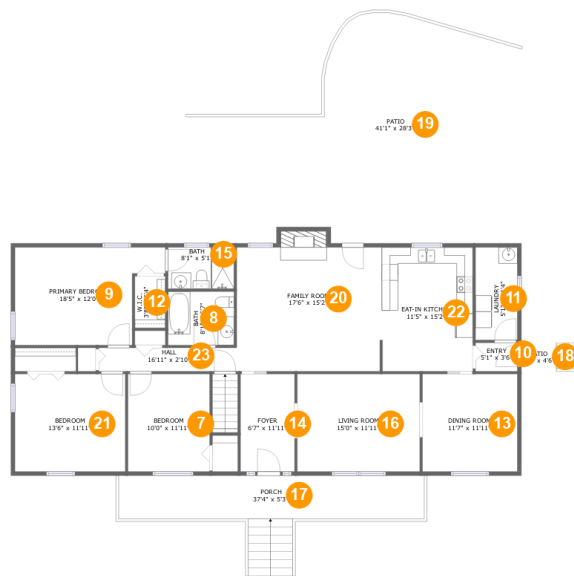


## Room Dimensions

**Floor 1****Total sqft: 1780****Living area: 917**

#	Room name	Dimensions	Area (sqft)	Counted as Living Area
1	Storage	9'10" x 11'7"	115 sq. ft	No
2	Garage	26'11" x 27'5"	703 sq. ft	No
3	Bedroom	17'4" x 11'7"	202 sq. ft	Yes
4	Bath	5'4" x 11'1"	58 sq. ft	Yes
5	Hall	6'4" x 11'11"	110 sq. ft	Yes
6	Recreation Room	28'7" x 15'6"	443 sq. ft	Yes

# 5009 Cherokee Hills Drive, Cherokee Hills, Salem, Roanoke County, Virginia, United States,



## Room Dimensions

Floor 2

Total sqft: 2845

Living area: 1779

#	Room name	Dimensions	Area (sqft)	Counted as Living Area
7	Bedroom	10'0" x 11'11"	119 sq. ft	Yes
8	Bath	8'1" x 6'7"	53 sq. ft	Yes
9	Primary Bedroom	18'5" x 12'0"	185 sq. ft	Yes
10	Entry	5'1" x 3'6"	18 sq. ft	Yes
11	Laundry	5'1" x 11'4"	58 sq. ft	Yes
12	W.i.c.	3'8" x 6'4"	24 sq. ft	Yes
13	Dining Room	11'7" x 11'11"	139 sq. ft	Yes
14	Foyer	6'7" x 11'11"	79 sq. ft	Yes
15	Bath	8'1" x 5'1"	41 sq. ft	Yes
16	Living Room	15'0" x 11'11"	179 sq. ft	Yes
17	Porch	37'4" x 5'3"	236 sq. ft	No

Scan captured on Tue, 08 Oct 2024 19:31:34 GMT

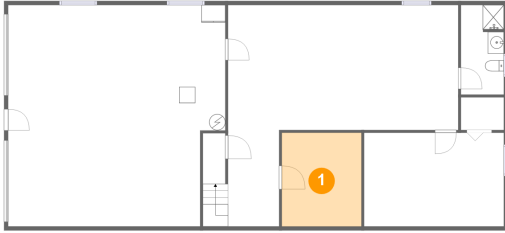
Information is calculated by CubiCasa technology; deemed highly reliable but not guaranteed.

**5009 Cherokee Hills Drive, Cherokee Hills,  
Salem, Roanoke County, Virginia, United States,**

#	Room name	Dimensions	Area (sqft)	Counted as Living Area
18	Patio	4'3" x 4'6"	19 sq. ft	No
19	Patio	41'1" x 28'3"	798 sq. ft	No
20	Family Room	17'6" x 15'2"	277 sq. ft	Yes
21	Bedroom	13'6" x 11'11"	161 sq. ft	Yes
22	Eat-in Kitchen	11'5" x 15'2"	172 sq. ft	Yes
23	Hall	16'11" x 2'10"	49 sq. ft	Yes

# 5009 Cherokee Hills Drive, Cherokee Hills, Salem, Roanoke County, Virginia, United States,

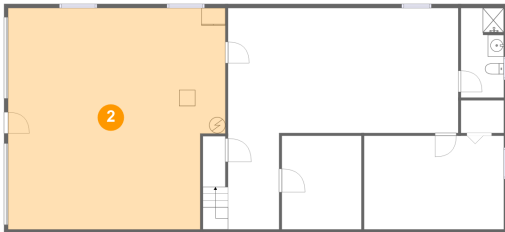
## 1 Floor 1 - Storage



Dimensions: 9'10" x 11'7"  
Area: 115 sq. ft  
Counted as Living Area: No

Heated: No  
Finished: No  
Enclosed: No  
Contiguous: No  
Permitted: Yes  
Wet Space: No  
Addition: No  
Conversion: No

## 2 Floor 1 - Garage



Dimensions: 26'11" x 27'5"  
Area: 703 sq. ft  
Counted as Living Area: No

Heated: No  
Finished: No  
Enclosed: Yes  
Contiguous: Yes  
Permitted: Yes  
Wet Space: No  
Addition: No  
Conversion: No

# 5009 Cherokee Hills Drive, Cherokee Hills, Salem, Roanoke County, Virginia, United States,

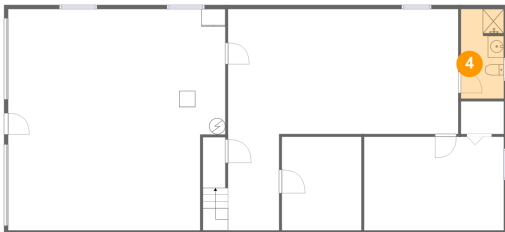
## 3 Floor 1 - Bedroom



Dimensions: 17'4" x 11'7"  
Area: 202 sq. ft  
Counted as Living Area:  
Yes

Heated: Yes  
Finished: Yes  
Enclosed: Yes  
Contiguous:  
Yes  
Permitted: Yes  
Wet Space: No  
Addition: No  
Conversion: No

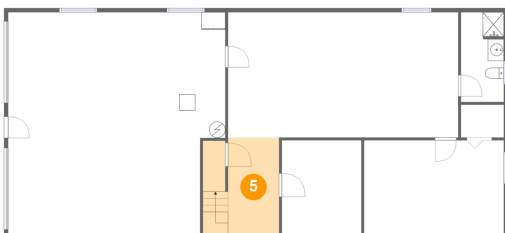
## 4 Floor 1 - Bath



Dimensions: 5'4" x 11'1"  
Area: 58 sq. ft  
Counted as Living Area:  
Yes

Heated: Yes  
Finished: Yes  
Enclosed: Yes  
Contiguous:  
Yes  
Permitted: Yes  
Wet Space: Yes  
Addition: No  
Conversion: No

## 5 Floor 1 - Hall

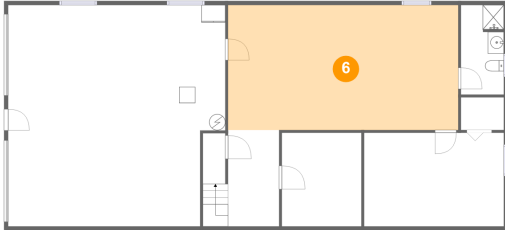


Dimensions: 6'4" x 11'11"  
Area: 110 sq. ft  
Counted as Living Area:  
Yes

Heated: Yes  
Finished: Yes  
Enclosed: Yes  
Contiguous:  
Yes  
Permitted: Yes  
Wet Space: No  
Addition: No  
Conversion: No

# 5009 Cherokee Hills Drive, Cherokee Hills, Salem, Roanoke County, Virginia, United States,

## 6 Floor 1 - Recreation Room



Dimensions: 28'7" x 15'6"  
Area: 443 sq. ft  
Counted as Living Area:  
Yes

Heated: Yes  
Finished: Yes  
Enclosed: Yes  
Contiguous:  
Yes  
Permitted: Yes  
Wet Space: No  
Addition: No  
Conversion: No

## 7 Floor 2 - Bedroom



Dimensions: 10'0" x 11'11"  
Area: 119 sq. ft  
Counted as Living Area:  
Yes

Heated: Yes  
Finished: Yes  
Enclosed: Yes  
Contiguous:  
Yes  
Permitted: Yes  
Wet Space: No  
Addition: No  
Conversion: No

## 8 Floor 2 - Bath



Dimensions: 8'1" x 6'7"  
Area: 53 sq. ft  
Counted as Living Area:  
Yes

Heated: Yes  
Finished: Yes  
Enclosed: Yes  
Contiguous:  
Yes  
Permitted: Yes  
Wet Space: Yes  
Addition: No  
Conversion: No

# 5009 Cherokee Hills Drive, Cherokee Hills, Salem, Roanoke County, Virginia, United States,

## 9 Floor 2 - Primary Bedroom



Dimensions: 18'5" x 12'0"  
Area: 185 sq. ft  
Counted as Living Area:  
Yes

Heated: Yes  
Finished: Yes  
Enclosed: Yes  
Contiguous:  
Yes  
Permitted: Yes  
Wet Space: No  
Addition: No  
Conversion: No

## 10 Floor 2 - Entry



Dimensions: 5'1" x 3'6"  
Area: 18 sq. ft  
Counted as Living Area:  
Yes

Heated: Yes  
Finished: Yes  
Enclosed: Yes  
Contiguous:  
Yes  
Permitted: Yes  
Wet Space: No  
Addition: No  
Conversion: No

## 11 Floor 2 - Laundry



Dimensions: 5'1" x 11'4"  
Area: 58 sq. ft  
Counted as Living Area:  
Yes

Heated: Yes  
Finished: Yes  
Enclosed: Yes  
Contiguous:  
Yes  
Permitted: Yes  
Wet Space: No  
Addition: No  
Conversion: No



# 5009 Cherokee Hills Drive, Cherokee Hills, Salem, Roanoke County, Virginia, United States,

## 12 Floor 2 - W.i.c.



Dimensions: 3'8" x 6'4"  
Area: 24 sq. ft  
Counted as Living Area:  
Yes

Heated: Yes  
Finished: Yes  
Enclosed: Yes  
Contiguous:  
Yes  
Permitted: Yes  
Wet Space: No  
Addition: No  
Conversion: No

## 13 Floor 2 - Dining Room



Dimensions: 11'7" x 11'11"  
Area: 139 sq. ft  
Counted as Living Area:  
Yes

Heated: Yes  
Finished: Yes  
Enclosed: Yes  
Contiguous:  
Yes  
Permitted: Yes  
Wet Space: No  
Addition: No  
Conversion: No

## 14 Floor 2 - Foyer



Dimensions: 6'7" x 11'11"  
Area: 79 sq. ft  
Counted as Living Area:  
Yes

Heated: Yes  
Finished: Yes  
Enclosed: Yes  
Contiguous:  
Yes  
Permitted: Yes  
Wet Space: No  
Addition: No  
Conversion: No

# 5009 Cherokee Hills Drive, Cherokee Hills, Salem, Roanoke County, Virginia, United States,

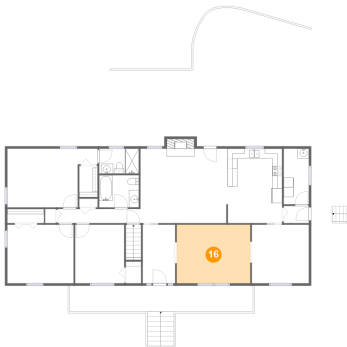
## 15 Floor 2 - Bath



Dimensions: 8'1" x 5'1"  
Area: 41 sq. ft  
Counted as Living Area:  
Yes

Heated: Yes  
Finished: Yes  
Enclosed: Yes  
Contiguous:  
Yes  
Permitted: Yes  
Wet Space: Yes  
Addition: No  
Conversion: No

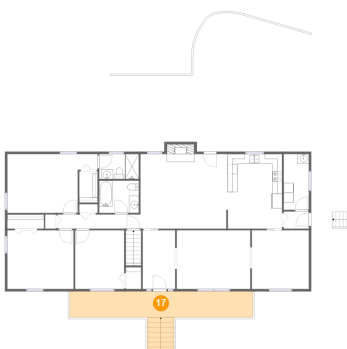
## 16 Floor 2 - Living Room



Dimensions: 15'0" x 11'11"  
Area: 179 sq. ft  
Counted as Living Area:  
Yes

Heated: Yes  
Finished: Yes  
Enclosed: Yes  
Contiguous:  
Yes  
Permitted: Yes  
Wet Space: No  
Addition: No  
Conversion: No

## 17 Floor 2 - Porch

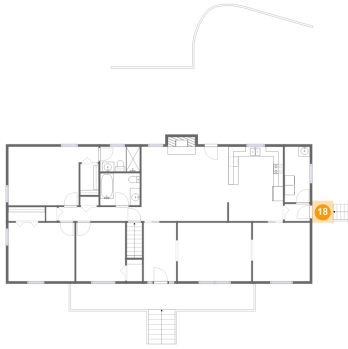


Dimensions: 37'4" x 5'3"  
Area: 236 sq. ft  
Counted as Living Area: No

Heated: No  
Finished: Yes  
Enclosed: No  
Contiguous: Yes  
Permitted: Yes  
Wet Space: No  
Addition: No  
Conversion: No

# 5009 Cherokee Hills Drive, Cherokee Hills, Salem, Roanoke County, Virginia, United States,

## 18 Floor 2 - Patio



Dimensions: 4'3" x 4'6"  
Area: 19 sq. ft  
Counted as Living Area: No

Heated: No  
Finished: Yes  
Enclosed: No  
Contiguous: Yes  
Permitted: Yes  
Wet Space: No  
Addition: No  
Conversion: No

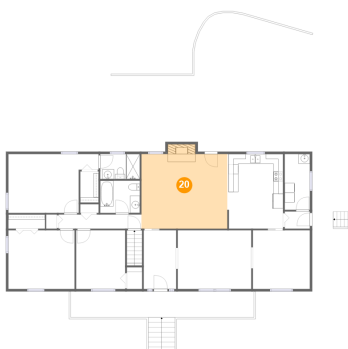
## 19 Floor 2 - Patio



Dimensions: 41'1" x 28'3"  
Area: 798 sq. ft  
Counted as Living Area: No

Heated: No  
Finished: Yes  
Enclosed: No  
Contiguous: Yes  
Permitted: Yes  
Wet Space: No  
Addition: No  
Conversion: No

## 20 Floor 2 - Family Room



Dimensions: 17'6" x 15'2"  
Area: 277 sq. ft  
Counted as Living Area:  
Yes

Heated: Yes  
Finished: Yes  
Enclosed: Yes  
Contiguous:  
Yes  
Permitted: Yes  
Wet Space: No  
Addition: No  
Conversion: No

# 5009 Cherokee Hills Drive, Cherokee Hills, Salem, Roanoke County, Virginia, United States,

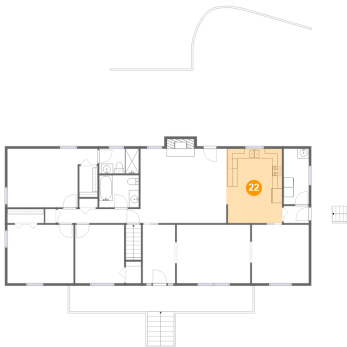
## 21 Floor 2 - Bedroom



Dimensions: 13'6" x 11'11"  
Area: 161 sq. ft  
Counted as Living Area:  
Yes

Heated: Yes  
Finished: Yes  
Enclosed: Yes  
Contiguous:  
Yes  
Permitted: Yes  
Wet Space: No  
Addition: No  
Conversion: No

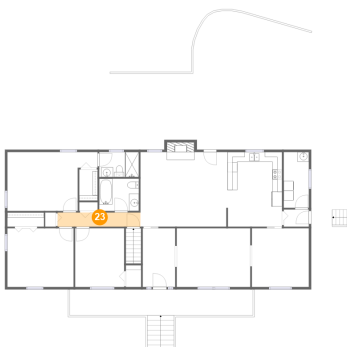
## 22 Floor 2 - Eat-in Kitchen



Dimensions: 11'5" x 15'2"  
Area: 172 sq. ft  
Counted as Living Area:  
Yes

Heated: Yes  
Finished: Yes  
Enclosed: Yes  
Contiguous:  
Yes  
Permitted: Yes  
Wet Space: No  
Addition: No  
Conversion: No

## 23 Floor 2 - Hall



Dimensions: 16'11" x 2'10"  
Area: 49 sq. ft  
Counted as Living Area:  
Yes

Heated: Yes  
Finished: Yes  
Enclosed: Yes  
Contiguous:  
Yes  
Permitted: Yes  
Wet Space: No  
Addition: No  
Conversion: No