

SKG Productions
780.887.7491
info@skgproductions.ca

Date April 26, 2025
Address 511 Westerra Blvd
City Stony Plain
Agent Lisa Rice
Brokerage ReMax
Property Type Bungalow

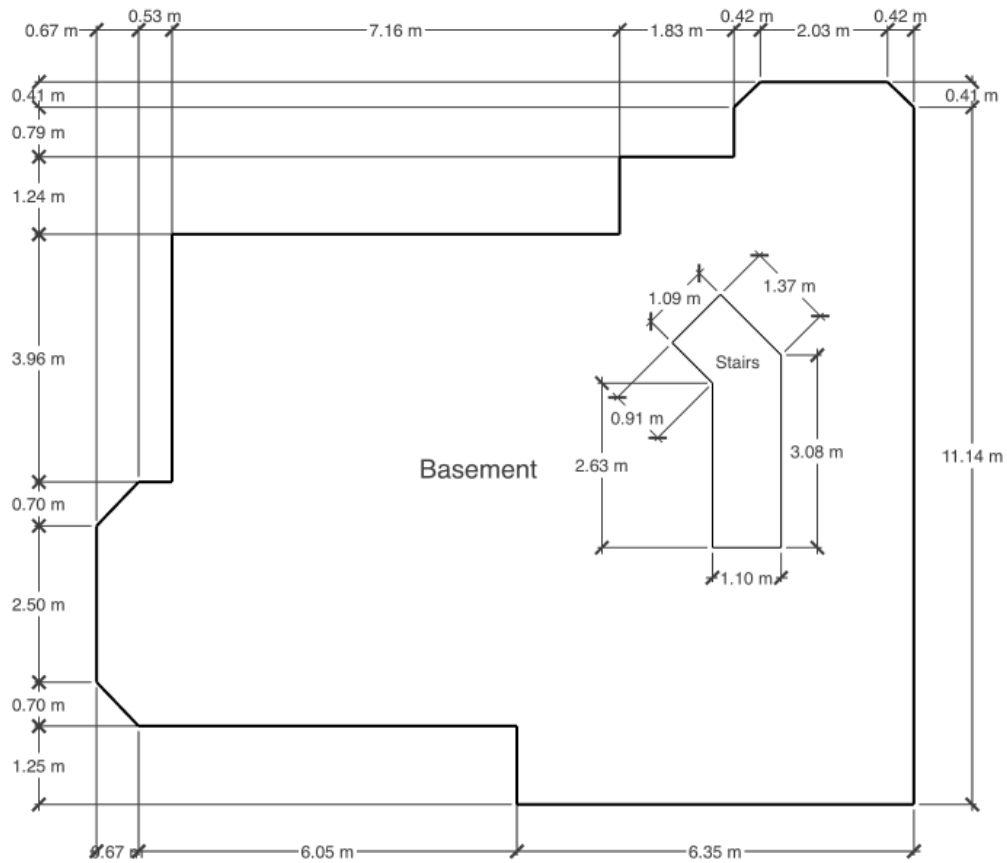


	Square Feet	Square Meters
Main Level	Above Grade	1412.33
Basement	Below Grade	1185.64
Total	Above Grade	1412.33
		131.21

Main Level	Feet	Meters
Living Room	21 ft, 2 in x 17 ft, 1 in	6.44 m x 5.22 m
Dining Room	14 ft, 1 in x 12 ft, 5 in	4.29 m x 3.78 m
Kitchen	13 ft, 8 in x 12 ft, 11 in	4.18 m x 3.95 m
Primary Bedroom	14 ft, 3 in x 12 ft, 0 in	4.33 m x 3.66 m
Ensuite	9 ft, 3 in x 9 ft, 7 in	2.82 m x 2.93 m
Den/Office	12 ft, 5 in x 10 ft, 7 in	3.79 m x 3.22 m
WIC	6 ft, 7 in x 6 ft, 11 in	2.02 m x 2.10 m
Bathroom	4 ft, 10 in x 6 ft, 10 in	1.47 m x 2.08 m
Laundry	6 ft, 9 in x 7 ft, 10 in	2.06 m x 2.40 m
Garage	22 ft, 6 in x 20 ft, 10 in	6.86 m x 6.36 m

Basement	Feet	Meters
Family Room	15 ft, 8 in x 28 ft, 8 in	4.78 m x 8.73 m
Flex Space	11 ft, 1 in x 21 ft, 1 in	3.38 m x 6.42 m
Bedroom	13 ft, 9 in x 9 ft, 5 in	4.19 m x 2.88 m
Bathroom	4 ft, 11 in x 9 ft, 10 in	1.50 m x 2.99 m
Utility	3 ft, 9 in x 13 ft, 0 in	1.15 m x 3.97 m

511 Westerra Blvd Spruce Grove



511 Westerra Blvd Spruce Grove

