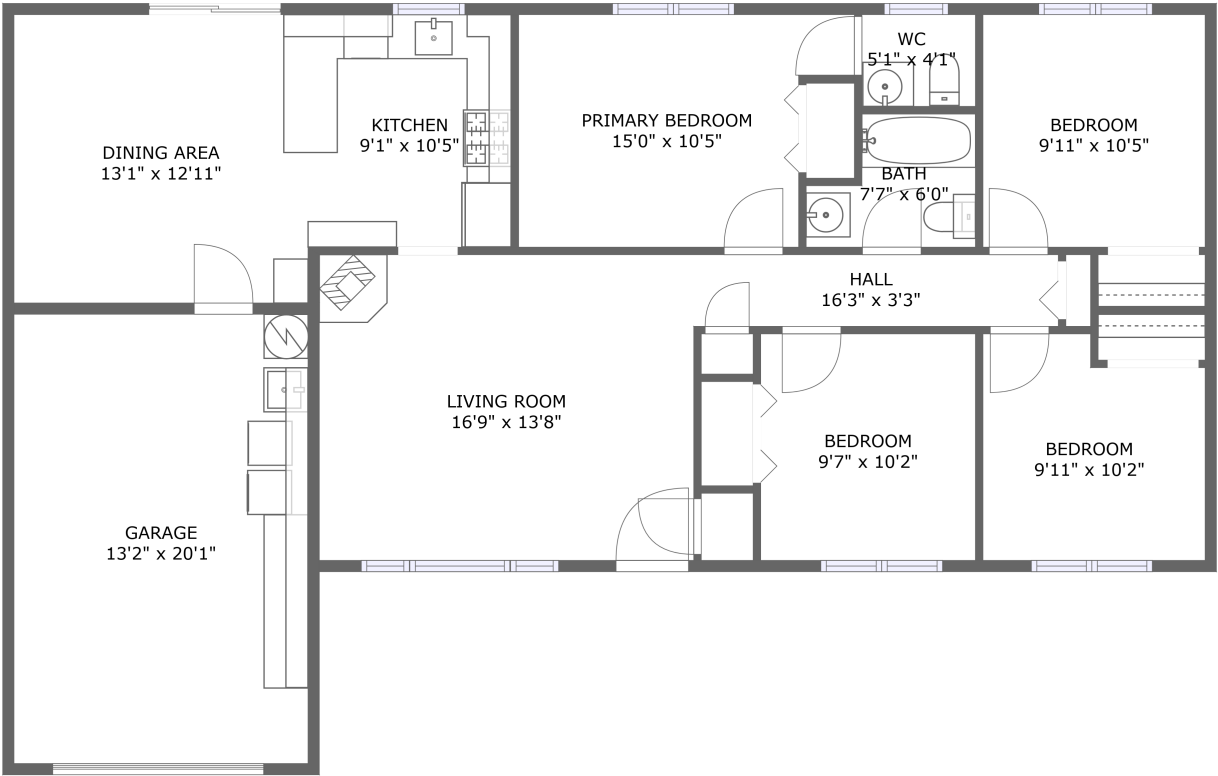


Home report

2895 Southwest 175th Avenue, Cooper Mountain - Aloha North,
Aloha, Washington County, Oregon, United States, 97003



FLOOR 1


Total Area: 1144 sq. ft

Floor 1: 1144 sq. ft

Excluded: Garage 264 sq. ft, Walls: 100 sq. ft

Property summary

 1 Floors

 4 Bedrooms

 1 Bathrooms

Home report

**2895 Southwest 175th Avenue, Cooper Mountain - Aloha North,
Aloha, Washington County, Oregon, United States, 97003**



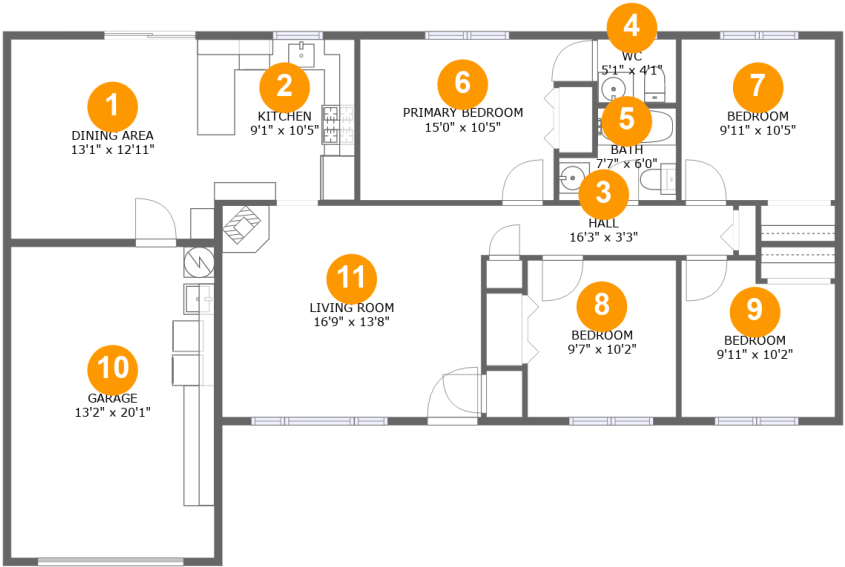
1
Half baths



1
Garages

Home report

2895 Southwest 175th Avenue, Cooper Mountain - Aloha North,
Aloha, Washington County, Oregon, United States, 97003



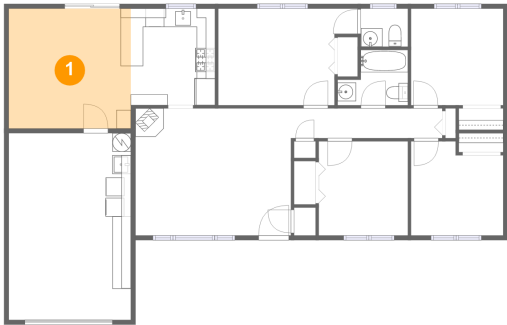
Room dimensions

Floor 1

Total:1144sqft Excluded: 264sqft

#		Max Dimensions	sqft	Included
1	Dining Area	13'1" x 12'11"	170 sq. ft	Yes
2	Kitchen	9'1" x 10'5"	94 sq. ft	Yes
3	Hall	16'3" x 3'3"	52 sq. ft	Yes
4	WC	5'1" x 4'1"	21 sq. ft	Yes
5	Bath	7'7" x 6'0"	37 sq. ft	Yes
6	Primary Bedroom	15'0" x 10'5"	137 sq. ft	Yes
7	Bedroom	9'11" x 10'5"	103 sq. ft	Yes
8	Bedroom	9'7" x 10'2"	97 sq. ft	Yes
9	Bedroom	9'11" x 10'2"	93 sq. ft	Yes
10	Garage	13'2" x 20'1"	264 sq. ft	No
11	Living Room	16'9" x 13'8"	229 sq. ft	Yes

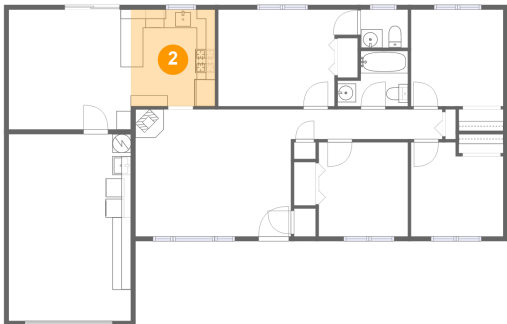
1 Floor 1 - Dining Area



Max Dimensions: 13'1" x 12'11"
Calculated Area: 170 sq. ft
Included: Yes

Heated: Yes
Finished: Yes
Enclosed: Yes
Contiguous: Yes
Permitted: Yes
Wet space: No
Addition: No
Conversion: No

2 Floor 1 - Kitchen

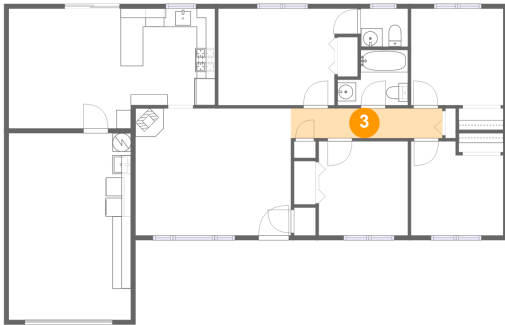


Max Dimensions: 9'1" x 10'5"
Calculated Area: 94 sq. ft
Included: Yes

Heated: Yes
Finished: Yes
Enclosed: Yes
Contiguous: Yes
Permitted: Yes
Wet space: No
Addition: No
Conversion: No

2895 Southwest 175th Avenue, Cooper Mountain - Aloha North,
Aloha, Washington County, Oregon, United States, 97003

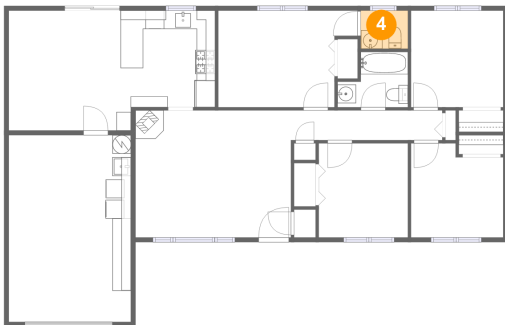
3 Floor 1 - Hall



Max Dimensions: 16'3" x 3'3"
Calculated Area: 52 sq. ft
Included: Yes

Heated: Yes
Finished: Yes
Enclosed: Yes
Contiguous: Yes
Permitted: Yes
Wet space: No
Addition: No
Conversion: No

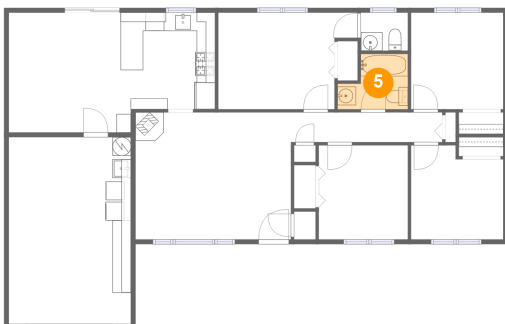
4 Floor 1 - WC



Max Dimensions: 5'1" x 4'1"
Calculated Area: 21 sq. ft
Included: Yes

Heated: Yes
Finished: Yes
Enclosed: Yes
Contiguous: Yes
Permitted: Yes
Wet space: Yes
Addition: No
Conversion: No

5 Floor 1 - Bath

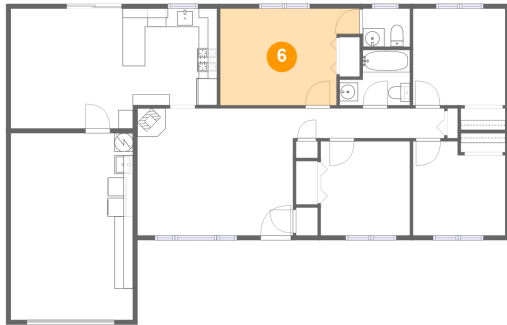


Max Dimensions: 7'7" x 6'0"
Calculated Area: 37 sq. ft
Included: Yes

Heated: Yes
Finished: Yes
Enclosed: Yes
Contiguous: Yes
Permitted: Yes
Wet space: Yes
Addition: No
Conversion: No

2895 Southwest 175th Avenue, Cooper Mountain - Aloha North,
Aloha, Washington County, Oregon, United States, 97003

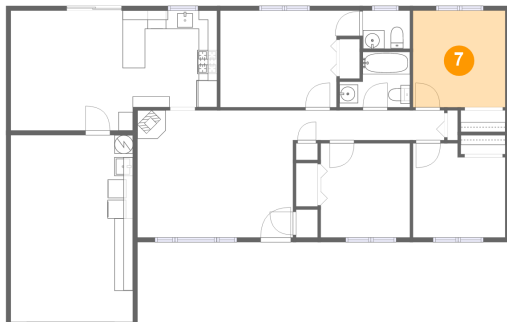
6 Floor 1 - Primary Bedroom



Max Dimensions: 15'0" x 10'5"
Calculated Area: 137 sq. ft
Included: Yes

Heated: Yes
Finished: Yes
Enclosed: Yes
Contiguous: Yes
Permitted: Yes
Wet space: No
Addition: No
Conversion: No

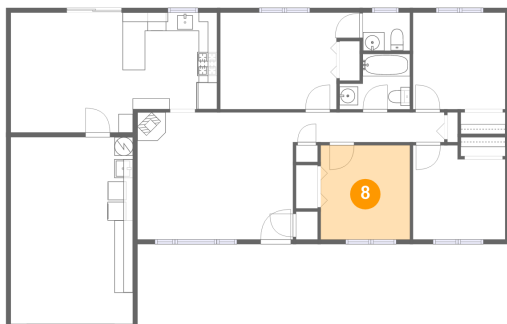
7 Floor 1 - Bedroom



Max Dimensions: 9'11" x 10'5"
Calculated Area: 103 sq. ft
Included: Yes

Heated: Yes
Finished: Yes
Enclosed: Yes
Contiguous: Yes
Permitted: Yes
Wet space: No
Addition: No
Conversion: No

8 Floor 1 - Bedroom



Max Dimensions: 9'7" x 10'2"
Calculated Area: 97 sq. ft
Included: Yes

Heated: Yes
Finished: Yes
Enclosed: Yes
Contiguous: Yes
Permitted: Yes
Wet space: No
Addition: No
Conversion: No

Home report

2895 Southwest 175th Avenue, Cooper Mountain - Aloha North,
Aloha, Washington County, Oregon, United States, 97003

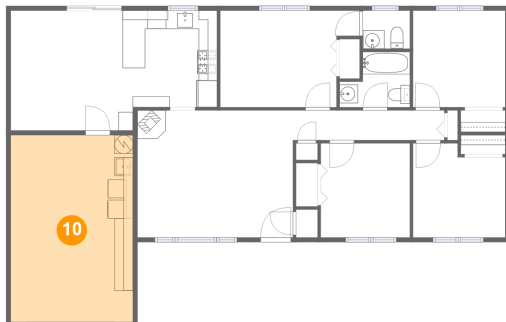
9 Floor 1 - Bedroom



Max Dimensions: 9'11" x 10'2"
Calculated Area: 93 sq. ft
Included: Yes

Heated: Yes
Finished: Yes
Enclosed: Yes
Contiguous: Yes
Permitted: Yes
Wet space: No
Addition: No
Conversion: No

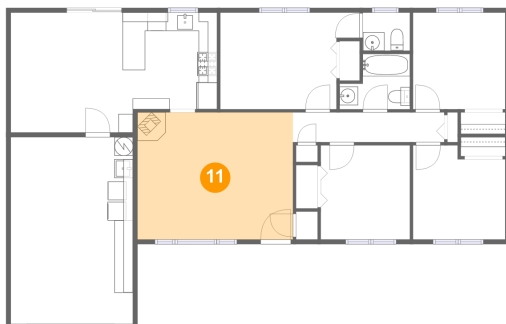
10 Floor 1 - Garage



Max Dimensions: 13'2" x 20'1"
Calculated Area: 264 sq. ft
Included: No

Heated: No
Finished: No
Enclosed: Yes
Contiguous: Yes
Permitted: Yes
Wet space: No
Addition: No
Conversion: No

11 Floor 1 - Living Room



Max Dimensions: 16'9" x 13'8"
Calculated Area: 229 sq. ft
Included: Yes

Heated: Yes
Finished: Yes
Enclosed: Yes
Contiguous: Yes
Permitted: Yes
Wet space: No
Addition: No
Conversion: No