

# 5110-2108 Gilmore Avenue

Burnaby BC V5C 0N7

3

BEDROOMS

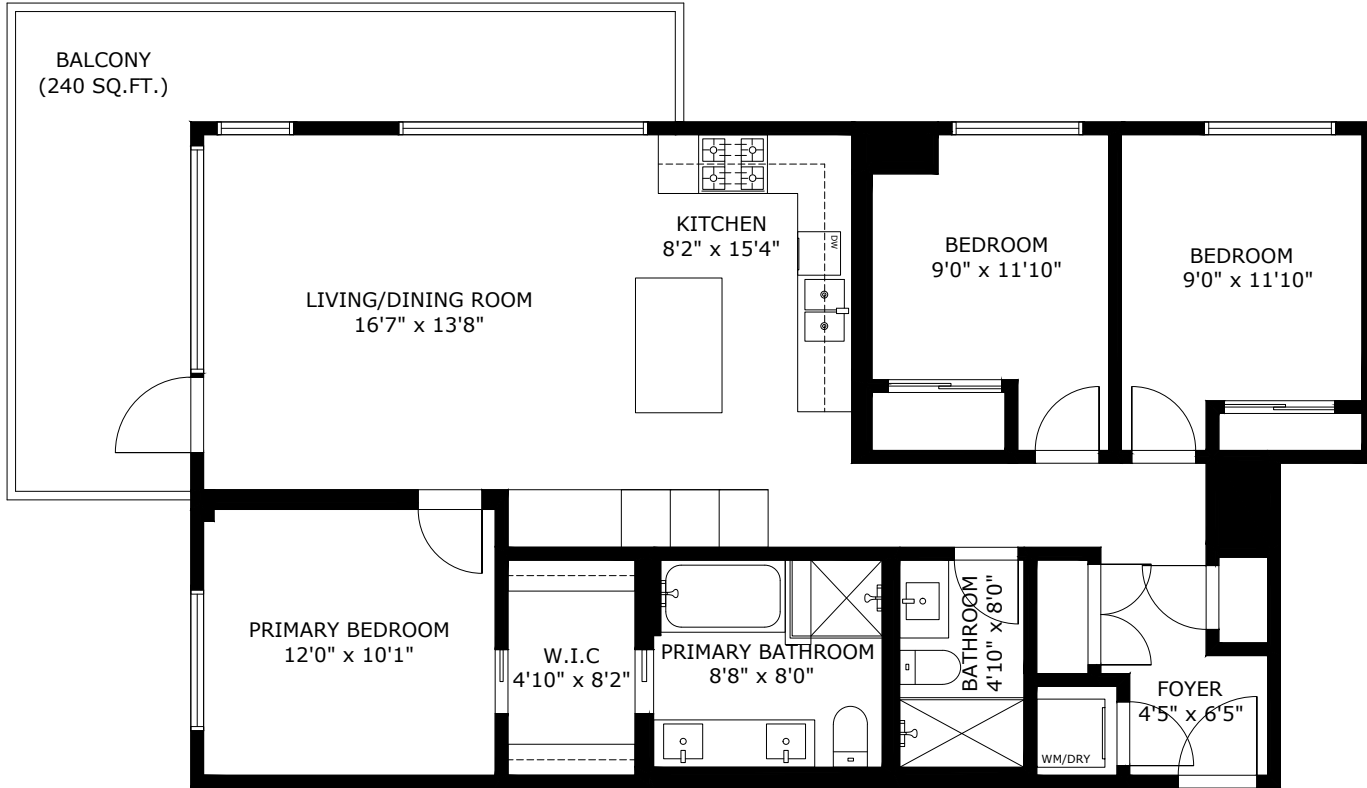
2

BATHROOMS

1,090

TOTAL SQ.FT.

Total Area 1,090 SQ.FT.  
Balcony Area: 240 SQ.FT.  
Ceiling Height: 9'0"



## 5110-2108 Gilmore Avenue, Burnaby BC V5C 0N7

Measurements are approximate and may not be to scale. Gross measurement as per Strata Plan.  
The floor plan illustration is not suitable for construction/architectural purposes.  
This communication is not intended to cause or induce breach of an existing agency agreement