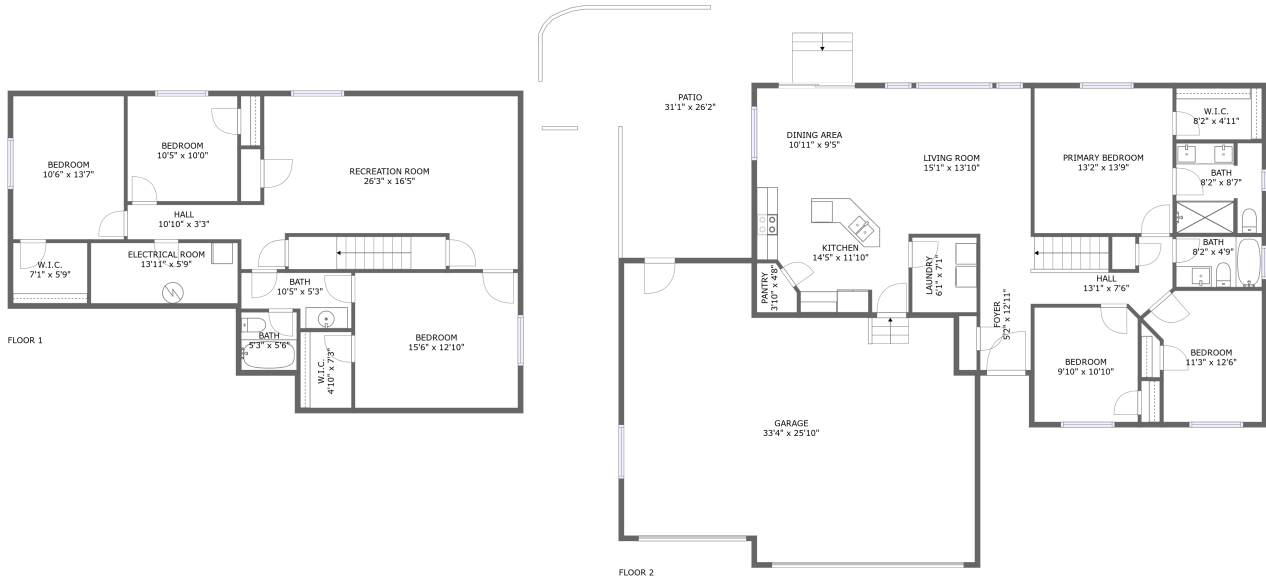


4913 Wiltshire Street, Chubbuck, Bannock County, Idaho, United States, 83202



Property Summary



2 floors



6 bedrooms



3 bathrooms



3,956 total sqft

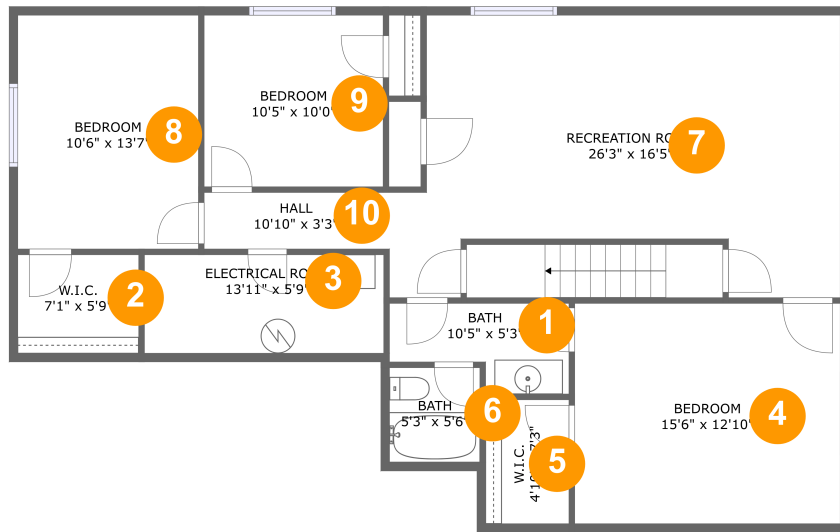


1 garages



2,540 Gross Living Area sqft

4913 Wiltshire Street, Chubbuck, Bannock County, Idaho, United States, 83202



Room Dimensions

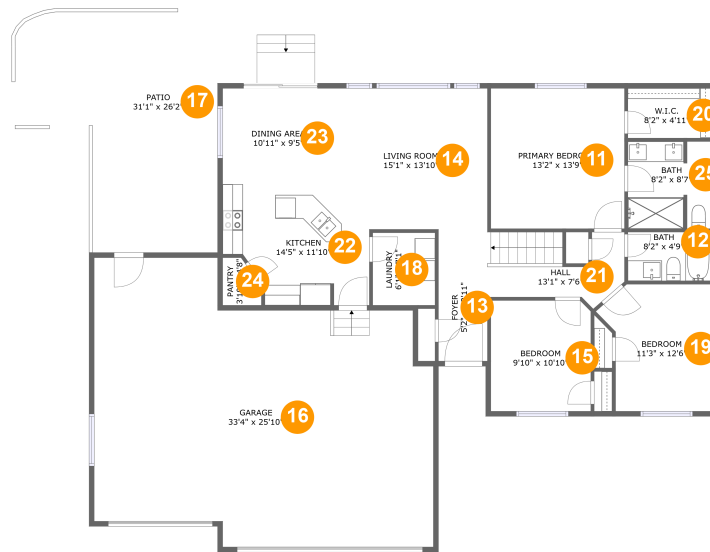
Floor 1

Total sqft: 1262

Living area: 1175

#	Room name	Dimensions	Area (sqft)	Counted as Living Area
1	Bath	10'5" x 5'3"	45 sq. ft	Yes
2	W.i.c.	7'1" x 5'9"	40 sq. ft	Yes
3	Electrical Room	13'11" x 5'9"	80 sq. ft	No
4	Bedroom	15'6" x 12'10"	198 sq. ft	Yes
5	W.i.c.	4'10" x 7'3"	35 sq. ft	Yes
6	Bath	5'3" x 5'6"	29 sq. ft	Yes
7	Recreation Room	26'3" x 16'5"	356 sq. ft	Yes
8	Bedroom	10'6" x 13'7"	143 sq. ft	Yes
9	Bedroom	10'5" x 10'0"	104 sq. ft	Yes
10	Hall	10'10" x 3'3"	35 sq. ft	Yes

4913 Wiltshire Street, Chubbuck, Bannock County, Idaho, United States, 83202



Room Dimensions

Floor 2

Total sqft: 2694

Living area: 1365

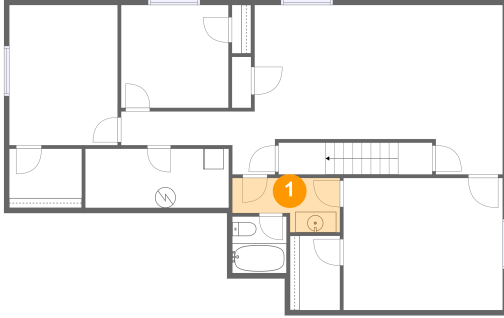
#	Room name	Dimensions	Area (sqft)	Counted as Living Area
11	Primary Bedroom	13'2" x 13'9"	181 sq. ft	Yes
12	Bath	8'2" x 4'9"	39 sq. ft	Yes
13	Foyer	5'2" x 12'11"	64 sq. ft	Yes
14	Living Room	15'1" x 13'10"	209 sq. ft	Yes
15	Bedroom	9'10" x 10'10"	106 sq. ft	Yes
16	Garage	33'4" x 25'10"	793 sq. ft	No
17	Patio	31'1" x 26'2"	489 sq. ft	No
18	Laundry	6'1" x 7'1"	44 sq. ft	Yes
19	Bedroom	11'3" x 12'6"	120 sq. ft	Yes
20	W.i.c.	8'2" x 4'11"	40 sq. ft	Yes
21	Hall	13'1" x 7'6"	74 sq. ft	Yes

**4913 Wiltshire Street, Chubbuck, Bannock
County, Idaho, United States, 83202**

#	Room name	Dimensions	Area (sqft)	Counted as Living Area
22	Kitchen	14'5" x 11'10"	137 sq. ft	Yes
23	Dining Area	10'11" x 9'5"	103 sq. ft	Yes
24	Pantry	3'10" x 4'8"	15 sq. ft	Yes
25	Bath	8'2" x 8'7"	68 sq. ft	Yes

4913 Wiltshire Street, Chubbuck, Bannock County, Idaho, United States, 83202

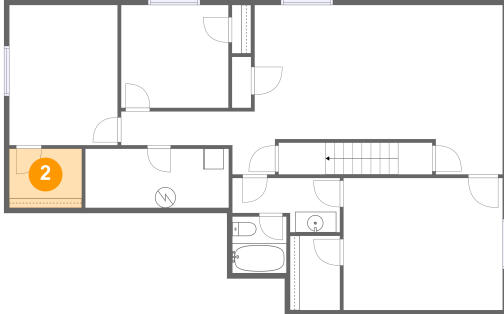
1 Floor 1 - Bath



Dimensions: 10'5" x 5'3"
Area: 45 sq. ft
Counted as Living Area:
Yes

Heated: Yes
Finished: Yes
Enclosed: Yes
Contiguous:
Yes
Permitted: Yes
Wet Space: Yes
Addition: No
Conversion: No

2 Floor 1 - W.i.c.

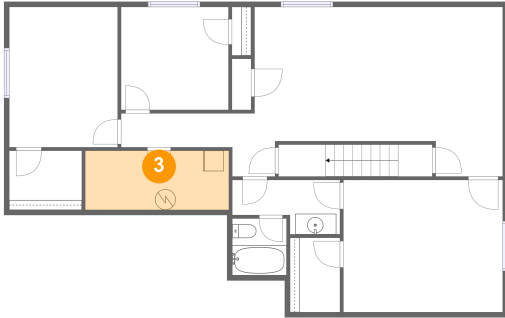


Dimensions: 7'1" x 5'9"
Area: 40 sq. ft
Counted as Living Area:
Yes

Heated: Yes
Finished: Yes
Enclosed: Yes
Contiguous:
Yes
Permitted: Yes
Wet Space: No
Addition: No
Conversion: No

4913 Wiltshire Street, Chubbuck, Bannock County, Idaho, United States, 83202

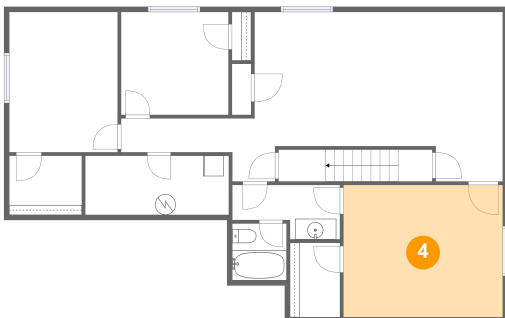
3 Floor 1 - Electrical Room



Dimensions: 13'11" x 5'9"
Area: 80 sq. ft
Counted as Living Area: No

Heated: No
Finished: No
Enclosed: Yes
Contiguous: Yes
Permitted: Yes
Wet Space: No
Addition: No
Conversion: No

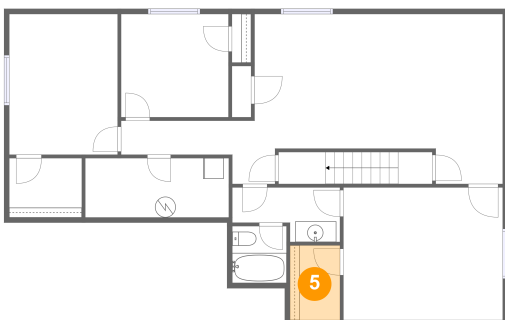
4 Floor 1 - Bedroom



Dimensions: 15'6" x 12'10"
Area: 198 sq. ft
Counted as Living Area: Yes

Heated: Yes
Finished: Yes
Enclosed: Yes
Contiguous: Yes
Permitted: Yes
Wet Space: No
Addition: No
Conversion: No

5 Floor 1 - W.i.c.

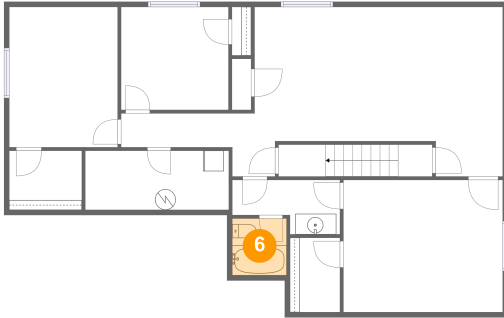


Dimensions: 4'10" x 7'3"
Area: 35 sq. ft
Counted as Living Area: Yes

Heated: Yes
Finished: Yes
Enclosed: Yes
Contiguous: Yes
Permitted: Yes
Wet Space: No
Addition: No
Conversion: No

4913 Wiltshire Street, Chubbuck, Bannock County, Idaho, United States, 83202

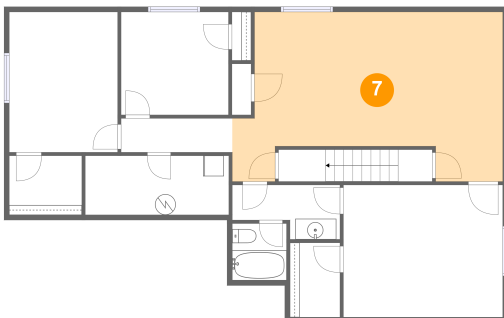
6 Floor 1 - Bath



Dimensions: 5'3" x 5'6"
Area: 29 sq. ft
Counted as Living Area:
Yes

Heated: Yes
Finished: Yes
Enclosed: Yes
Contiguous:
Yes
Permitted: Yes
Wet Space: Yes
Addition: No
Conversion: No

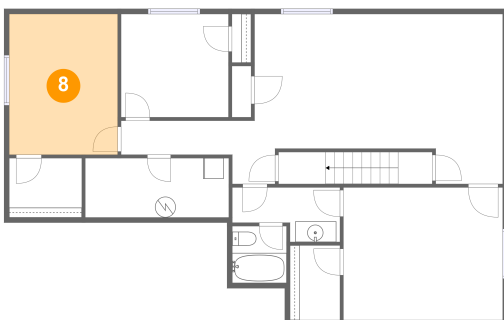
7 Floor 1 - Recreation Room



Dimensions: 26'3" x 16'5"
Area: 356 sq. ft
Counted as Living Area:
Yes

Heated: Yes
Finished: Yes
Enclosed: Yes
Contiguous:
Yes
Permitted: Yes
Wet Space: No
Addition: No
Conversion: No

8 Floor 1 - Bedroom

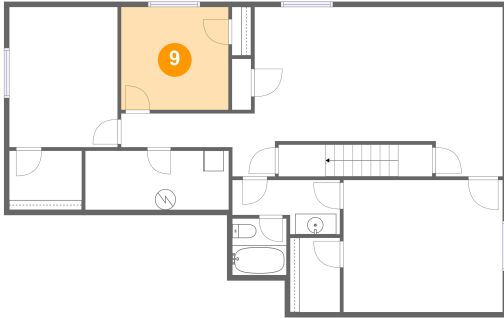


Dimensions: 10'6" x 13'7"
Area: 143 sq. ft
Counted as Living Area:
Yes

Heated: Yes
Finished: Yes
Enclosed: Yes
Contiguous:
Yes
Permitted: Yes
Wet Space: No
Addition: No
Conversion: No

4913 Wiltshire Street, Chubbuck, Bannock County, Idaho, United States, 83202

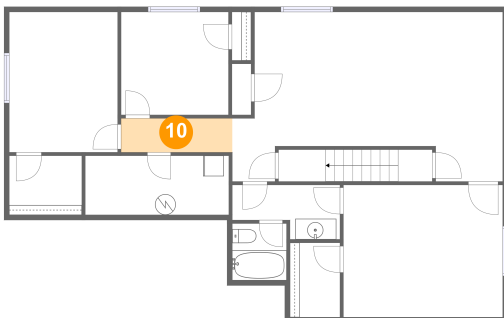
9 Floor 1 - Bedroom



Dimensions: 10'5" x 10'0"
Area: 104 sq. ft
Counted as Living Area:
Yes

Heated: Yes
Finished: Yes
Enclosed: Yes
Contiguous:
Yes
Permitted: Yes
Wet Space: No
Addition: No
Conversion: No

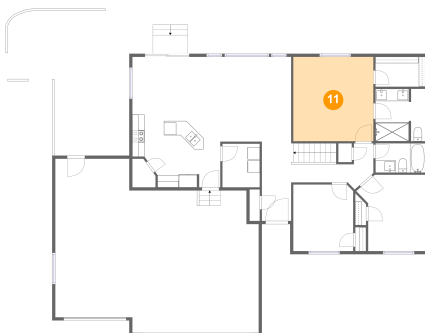
10 Floor 1 - Hall



Dimensions: 10'10" x 3'3"
Area: 35 sq. ft
Counted as Living Area:
Yes

Heated: Yes
Finished: Yes
Enclosed: Yes
Contiguous:
Yes
Permitted: Yes
Wet Space: No
Addition: No
Conversion: No

11 Floor 2 - Primary Bedroom



Dimensions: 13'2" x 13'9"
Area: 181 sq. ft
Counted as Living Area:
Yes

Heated: Yes
Finished: Yes
Enclosed: Yes
Contiguous:
Yes
Permitted: Yes
Wet Space: No
Addition: No
Conversion: No

4913 Wiltshire Street, Chubbuck, Bannock County, Idaho, United States, 83202

12 Floor 2 - Bath



Dimensions: 8'2" x 4'9"
Area: 39 sq. ft
Counted as Living Area:
Yes

Heated: Yes
Finished: Yes
Enclosed: Yes
Contiguous:
Yes
Permitted: Yes
Wet Space: Yes
Addition: No
Conversion: No

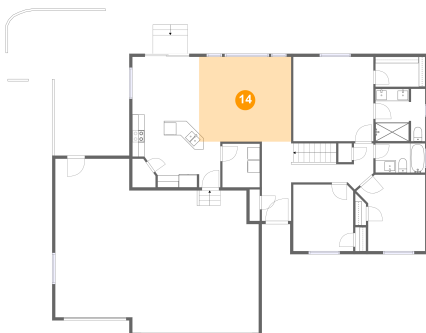
13 Floor 2 - Foyer



Dimensions: 5'2" x 12'11"
Area: 64 sq. ft
Counted as Living Area:
Yes

Heated: Yes
Finished: Yes
Enclosed: Yes
Contiguous:
Yes
Permitted: Yes
Wet Space: No
Addition: No
Conversion: No

14 Floor 2 - Living Room

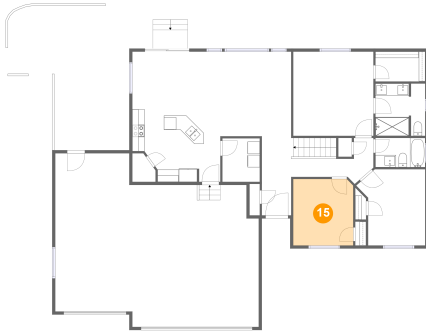


Dimensions: 15'1" x 13'10"
Area: 209 sq. ft
Counted as Living Area:
Yes

Heated: Yes
Finished: Yes
Enclosed: Yes
Contiguous:
Yes
Permitted: Yes
Wet Space: No
Addition: No
Conversion: No

4913 Wiltshire Street, Chubbuck, Bannock County, Idaho, United States, 83202

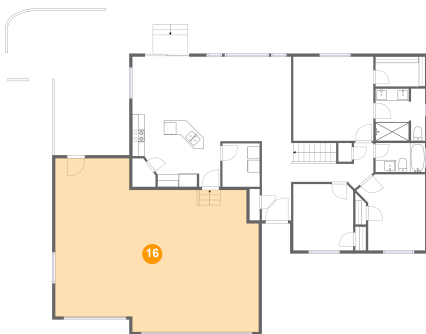
15 Floor 2 - Bedroom



Dimensions: 9'10" x 10'10"
Area: 106 sq. ft
Counted as Living Area: Yes

Heated: Yes
Finished: Yes
Enclosed: Yes
Contiguous: Yes
Permitted: Yes
Wet Space: No
Addition: No
Conversion: No

16 Floor 2 - Garage



Dimensions: 33'4" x 25'10"
Area: 793 sq. ft
Counted as Living Area: No

Heated: No
Finished: No
Enclosed: Yes
Contiguous: Yes
Permitted: Yes
Wet Space: No
Addition: No
Conversion: No

17 Floor 2 - Patio



Dimensions: 31'1" x 26'2"
Area: 489 sq. ft
Counted as Living Area: No

Heated: No
Finished: Yes
Enclosed: No
Contiguous: Yes
Permitted: Yes
Wet Space: No
Addition: No
Conversion: No

4913 Wiltshire Street, Chubbuck, Bannock County, Idaho, United States, 83202

18 Floor 2 - Laundry



Dimensions: 6'1" x 7'1"
Area: 44 sq. ft
Counted as Living Area:
Yes

Heated: Yes
Finished: Yes
Enclosed: Yes
Contiguous:
Yes
Permitted: Yes
Wet Space: No
Addition: No
Conversion: No

19 Floor 2 - Bedroom



Dimensions: 11'3" x 12'6"
Area: 120 sq. ft
Counted as Living Area:
Yes

Heated: Yes
Finished: Yes
Enclosed: Yes
Contiguous:
Yes
Permitted: Yes
Wet Space: No
Addition: No
Conversion: No

20 Floor 2 - W.i.c.

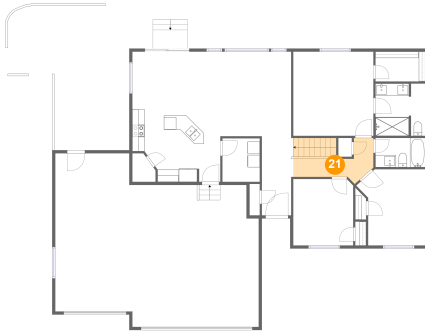


Dimensions: 8'2" x 4'11"
Area: 40 sq. ft
Counted as Living Area:
Yes

Heated: Yes
Finished: Yes
Enclosed: Yes
Contiguous:
Yes
Permitted: Yes
Wet Space: No
Addition: No
Conversion: No

4913 Wiltshire Street, Chubbuck, Bannock County, Idaho, United States, 83202

21 Floor 2 - Hall



Dimensions: 13'1" x 7'6"
Area: 74 sq. ft
Counted as Living Area:
Yes

Heated: Yes
Finished: Yes
Enclosed: Yes
Contiguous:
Yes
Permitted: Yes
Wet Space: No
Addition: No
Conversion: No

22 Floor 2 - Kitchen



Dimensions: 14'5" x 11'10"
Area: 137 sq. ft
Counted as Living Area:
Yes

Heated: Yes
Finished: Yes
Enclosed: Yes
Contiguous:
Yes
Permitted: Yes
Wet Space: No
Addition: No
Conversion: No

23 Floor 2 - Dining Area



Dimensions: 10'11" x 9'5"
Area: 103 sq. ft
Counted as Living Area:
Yes

Heated: Yes
Finished: Yes
Enclosed: Yes
Contiguous:
Yes
Permitted: Yes
Wet Space: No
Addition: No
Conversion: No

4913 Wiltshire Street, Chubbuck, Bannock County, Idaho, United States, 83202

24 Floor 2 - Pantry



Dimensions: 3'10" x 4'8"
Area: 15 sq. ft
Counted as Living Area:
Yes

Heated: Yes
Finished: Yes
Enclosed: Yes
Contiguous:
Yes
Permitted: Yes
Wet Space: No
Addition: No
Conversion: No

25 Floor 2 - Bath



Dimensions: 8'2" x 8'7"
Area: 68 sq. ft
Counted as Living Area:
Yes

Heated: Yes
Finished: Yes
Enclosed: Yes
Contiguous:
Yes
Permitted: Yes
Wet Space: Yes
Addition: No
Conversion: No