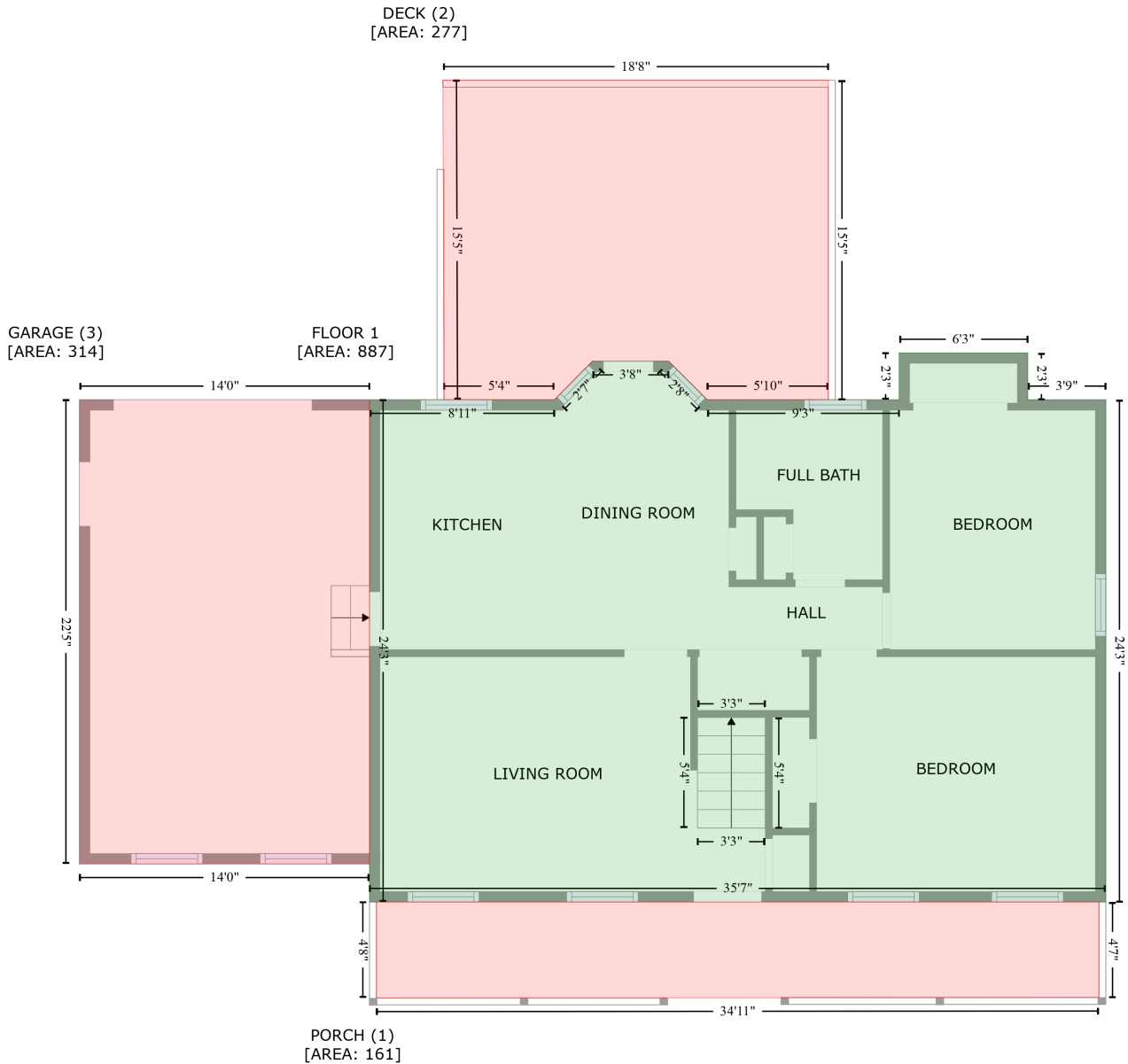


# 1930 Pine Creek Bluff Road, Powhatan, Powhatan County, Virginia, United States, 23139

Gross Living Area: 1753 sq. ft



Space	Area (sq. ft)	Calculation <small>Coordinate Polygon Area Algorithm using inches</small>
FLOOR 1 (Living area)	887	$-\left((549.3 + 549.3) * (220.4 - 247.5) + (549.3 + 594.6) * (247.5 - 247.5) + (594.6 + 594.6) * (247.5 - 538.7) + (594.6 + 167.6) * (538.7 - 538.7) + (167.6 + 167.6) * (538.7 - 247.5) + (167.6 + 274.9) * (247.5 - 247.5) + (274.9 + 296.9) * (247.5 - 225.2) + (296.9 + 341.1) * (225.2 - 225.2) + (341.1 + 363.4) * (225.2 - 247.5) + (363.4 + 474.7) * (247.5 - 247.5) + (474.7 + 474.7) * (247.5 - 220.4) + (474.7 + 549.3) * (220.4 - 220.4)\right) * 0.5 * 0.00694$
PORCH	161	$-\left((590.6 + 590.6) * (538.7 - 594) + (590.6 + 171.6) * (594 - 594.3) + (171.6 + 171.6) * (594.3 - \right.$

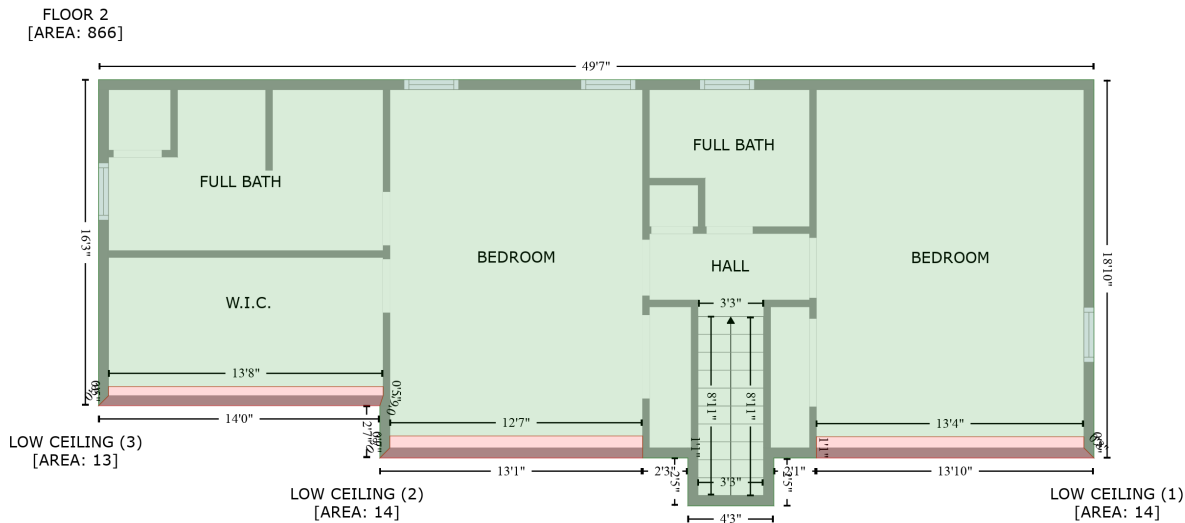
# 1930 Pine Creek Bluff Road, Powhatan, Powhatan County, Virginia, United States, 23139

Gross Living Area: 1753 sq. ft

Space	Area (sq. ft)	Calculation <small>Coordinate Polygon Area Algorithm using inches</small>
(Non-living area)		$538.7 + (171.6 + 590.6) * (538.7 - 538.7) * 0.5 * 0.00694$
DECK (Non-living area)	277	$-((433.7 + 433.7) * (62.4 - 247.5) + (433.7 + 363.4) * (247.5 - 247.5) + (363.4 + 341.1) * (247.5 - 225.2) + (341.1 + 296.9) * (225.2 - 225.2) + (296.9 + 274.9) * (225.2 - 247.5) + (274.9 + 210.8) * (247.5 - 247.5) + (210.8 + 210.2) * (247.5 - 62.4) + (210.2 + 433.7) * (62.4 - 62.4)) * 0.5 * 0.00694$
GARAGE (Non-living area)	314	$-((167.6 + 167.6) * (247.5 - 516.6) + (167.6 + -0.5) * (516.6 - 516.6) + (-0.5 + -0.5) * (516.6 - 247.5) + (-0.5 + 167.6) * (247.5 - 247.5)) * 0.5 * 0.00694$

# 1930 Pine Creek Bluff Road, Powhatan, Powhatan County, Virginia, United States, 23139

Gross Living Area: 1753 sq. ft



Space	Area (sq. ft)	Calculation
FLOOR 2 (Living area)	866	$-(594.6 + 594.6) * (247.5 - 473.4) + (594.6 + 588.6) * (473.4 - 467.4) + (588.6 + 588.6) * (467.4 - 460.7) + (588.6 + 428.6) * (460.7 - 460.7) + (428.6 + 428.6) * (460.7 - 473.4) + (428.6 + 403.2) * (473.4 - 473.4) + (403.2 + 403.2) * (473.4 - 501.9) + (403.2 + 351.8) * (501.9 - 501.9) + (351.8 + 351.8) * (501.9 - 473.4) + (351.8 + 324.7) * (473.4 - 473.4) + (324.7 + 324.7) * (473.4 - 460.2) + (324.7 + 173.6) * (460.2 - 460.2) + (173.6 + 173.6) * (460.2 - 467.4) + (173.6 + 167.6) * (467.4 - 473.4) + (167.6 + 167.6) * (473.4 - 442.2) + (167.6 + 169.6) * (442.2 - 436.2) + (169.6 + 169.6) * (436.2 - 430.7) + (169.6 + 5.5) * (430.7 - 430.7) + (5.5 + 5.5) * (430.7 - 436.2) + (5.5 + -0.5) * (436.2 - 442.2) + (-0.5 + -0.5) * (442.2 - 247.5) + (-0.5 + 594.6) * (247.5 - 247.5) * 0.5 * 0.00694$
LOW CEILING (Non-living area)	14	$-(588.6 + 588.6) * (460.7 - 467.4) + (588.6 + 594.6) * (467.4 - 473.4) + (594.6 + 428.6) * (473.4 - 473.4) + (428.6 + 428.6) * (473.4 - 460.7) + (428.6 + 588.6) * (460.7 - 460.7) * 0.5 * 0.00694$
LOW CEILING (Non-living area)	14	$-(324.7 + 324.7) * (460.2 - 473.4) + (324.7 + 167.6) * (473.4 - 473.4) + (167.6 + 173.6) * (473.4 - 467.4) + (173.6 + 173.6) * (467.4 - 460.2) + (173.6 + 324.7) * (460.2 - 460.2) * 0.5 * 0.00694$
LOW CEILING (Non-living area)	13	$-(169.6 + 169.6) * (430.7 - 436.2) + (169.6 + 167.6) * (436.2 - 442.2) + (167.6 + -0.5) * (442.2 - 442.2) + (-0.5 + 5.5) * (442.2 - 436.2) + (5.5 + 5.5) * (436.2 - 430.7) + (5.5 + 169.6) * (430.7 - 430.7) * 0.5 * 0.00694$