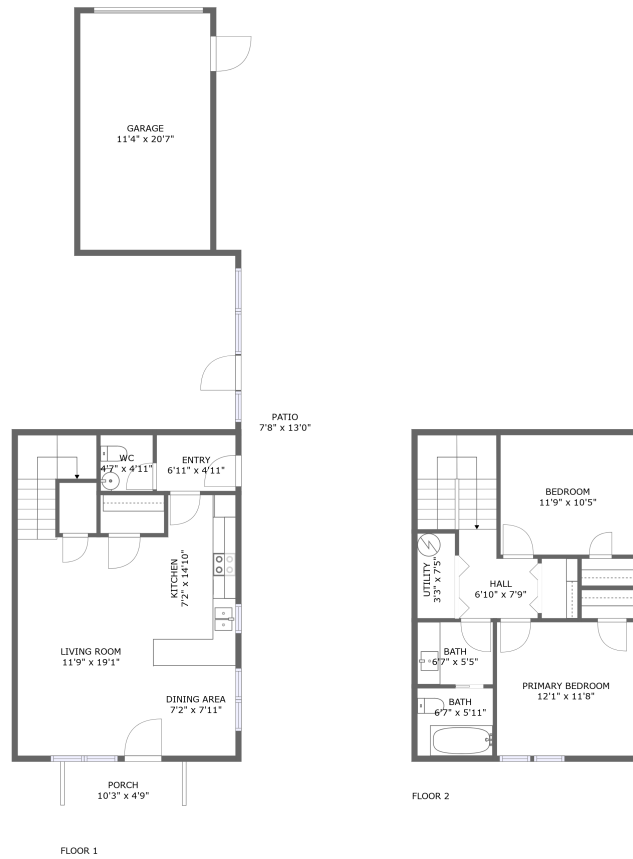


900-998 East Lander Street, Bonneville, Pocatello, Bannock County, Idaho, United States,



Property Summary



2 floors



2 bedrooms



1 bathrooms



1,556 total sqft

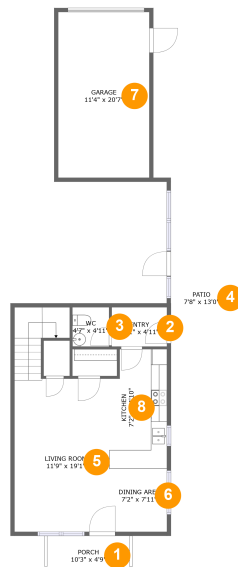


1 garages



1,102 Gross Living Area sqft

900-998 East Lander Street, Bonneville, Pocatello, Bannock County, Idaho, United States,



Room Dimensions

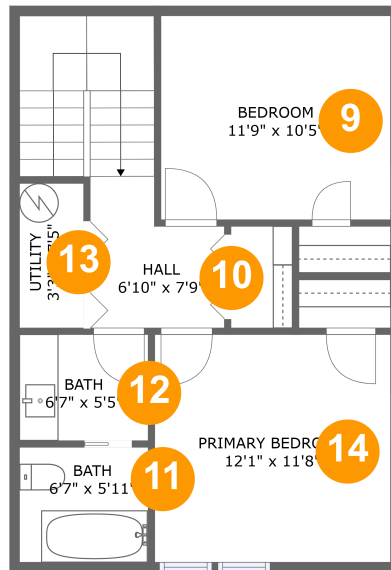
Floor 1

Total sqft: 985

Living area: 557

#	Room name	Dimensions	Area (sqft)	Counted as Living Area
1	Porch	10'3" x 4'9"	48 sq. ft	No
2	Entry	6'11" x 4'11"	34 sq. ft	Yes
3	Wc	4'7" x 4'11"	22 sq. ft	Yes
4	Patio	7'8" x 13'0"	99 sq. ft	No
5	Living Room	11'9" x 19'1"	268 sq. ft	Yes
6	Dining Area	7'2" x 7'11"	57 sq. ft	Yes
7	Garage	11'4" x 20'7"	234 sq. ft	No
8	Kitchen	7'2" x 14'10"	102 sq. ft	Yes

900-998 East Lander Street, Bonneville, Pocatello, Bannock County, Idaho, United States,



Room Dimensions

Floor 2

Total sqft: 571

Living area: 545

#	Room name	Dimensions	Area (sqft)	Counted as Living Area
9	Bedroom	11'9" x 10'5"	123 sq. ft	Yes
10	Hall	6'10" x 7'9"	101 sq. ft	Yes
11	Bath	6'7" x 5'11"	39 sq. ft	Yes
12	Bath	6'7" x 5'5"	36 sq. ft	Yes
13	Utility	3'3" x 7'5"	24 sq. ft	No
14	Primary Bedroom	12'1" x 11'8"	141 sq. ft	Yes

900-998 East Lander Street, Bonneville, Pocatello, Bannock County, Idaho, United States,

1 Floor 1 - Porch



Dimensions: 10'3" x 4'9"
Area: 48 sq. ft
Counted as Living Area: No

Heated: No
Finished: Yes
Enclosed: No
Contiguous: Yes
Permitted: Yes
Wet Space: No
Addition: No
Conversion: No

2 Floor 1 - Entry



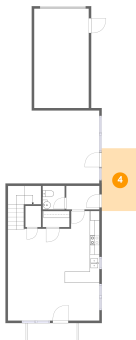
Dimensions: 6'11" x 4'11"
Area: 34 sq. ft
Counted as Living Area:
Yes

Heated: Yes
Finished: Yes
Enclosed: Yes
Contiguous:
Yes
Permitted: Yes
Wet Space: No
Addition: No
Conversion: No

**900-998 East Lander Street, Bonneville,
Pocatello, Bannock County, Idaho, United States,****3 Floor 1 - Wc**

Dimensions: 4'7" x 4'11"
Area: 22 sq. ft
Counted as Living Area:
Yes

Heated: Yes
Finished: Yes
Enclosed: Yes
Contiguous:
Yes
Permitted: Yes
Wet Space: Yes
Addition: No
Conversion: No

4 Floor 1 - Patio

Dimensions: 7'8" x 13'0"
Area: 99 sq. ft
Counted as Living Area: No

Heated: No
Finished: Yes
Enclosed: No
Contiguous: Yes
Permitted: Yes
Wet Space: No
Addition: No
Conversion: No

5 Floor 1 - Living Room

Dimensions: 11'9" x 19'1"
Area: 268 sq. ft
Counted as Living Area:
Yes

Heated: Yes
Finished: Yes
Enclosed: Yes
Contiguous:
Yes
Permitted: Yes
Wet Space: No
Addition: No
Conversion: No

**900-998 East Lander Street, Bonneville,
Pocatello, Bannock County, Idaho, United States,****6 Floor 1 - Dining Area**

Dimensions: 7'2" x 7'11"
Area: 57 sq. ft
Counted as Living Area:
Yes

Heated: Yes
Finished: Yes
Enclosed: Yes
Contiguous:
Yes
Permitted: Yes
Wet Space: No
Addition: No
Conversion: No

7 Floor 1 - Garage

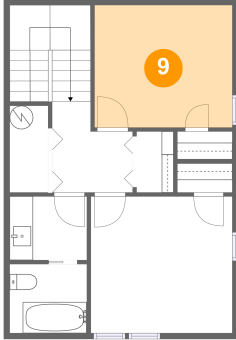
Dimensions: 11'4" x 20'7"
Area: 234 sq. ft
Counted as Living Area: No

Heated: No
Finished: No
Enclosed: Yes
Contiguous: Yes
Permitted: Yes
Wet Space: No
Addition: No
Conversion: No

8 Floor 1 - Kitchen

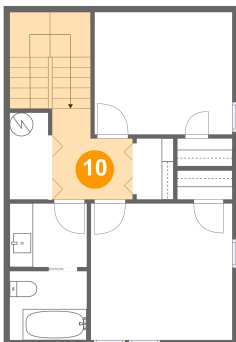
Dimensions: 7'2" x 14'10"
Area: 102 sq. ft
Counted as Living Area:
Yes

Heated: Yes
Finished: Yes
Enclosed: Yes
Contiguous:
Yes
Permitted: Yes
Wet Space: No
Addition: No
Conversion: No

**900-998 East Lander Street, Bonneville,
Pocatello, Bannock County, Idaho, United States,****9 Floor 2 - Bedroom**

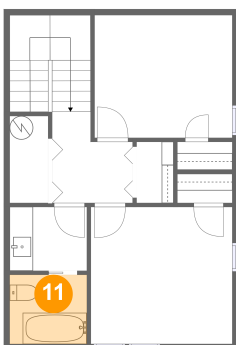
Dimensions: 11'9" x 10'5"
Area: 123 sq. ft
Counted as Living Area:
Yes

Heated: Yes
Finished: Yes
Enclosed: Yes
Contiguous:
Yes
Permitted: Yes
Wet Space: No
Addition: No
Conversion: No

10 Floor 2 - Hall

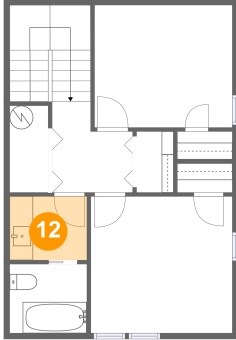
Dimensions: 6'10" x 7'9"
Area: 101 sq. ft
Counted as Living Area:
Yes

Heated: Yes
Finished: Yes
Enclosed: Yes
Contiguous:
Yes
Permitted: Yes
Wet Space: No
Addition: No
Conversion: No

11 Floor 2 - Bath

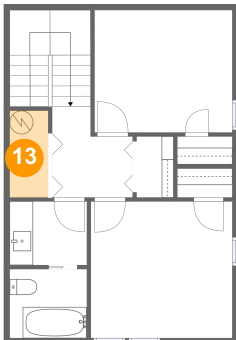
Dimensions: 6'7" x 5'11"
Area: 39 sq. ft
Counted as Living Area:
Yes

Heated: Yes
Finished: Yes
Enclosed: Yes
Contiguous:
Yes
Permitted: Yes
Wet Space: Yes
Addition: No
Conversion: No

**900-998 East Lander Street, Bonneville,
Pocatello, Bannock County, Idaho, United States,****12 Floor 2 - Bath**

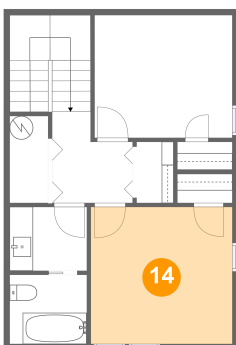
Dimensions: 6'7" x 5'5"
Area: 36 sq. ft
Counted as Living Area:
Yes

Heated: Yes
Finished: Yes
Enclosed: Yes
Contiguous:
Yes
Permitted: Yes
Wet Space: Yes
Addition: No
Conversion: No

13 Floor 2 - Utility

Dimensions: 3'3" x 7'5"
Area: 24 sq. ft
Counted as Living Area: No

Heated: No
Finished: No
Enclosed: Yes
Contiguous: Yes
Permitted: Yes
Wet Space: No
Addition: No
Conversion: No

14 Floor 2 - Primary Bedroom

Dimensions: 12'1" x 11'8"
Area: 141 sq. ft
Counted as Living Area:
Yes

Heated: Yes
Finished: Yes
Enclosed: Yes
Contiguous:
Yes
Permitted: Yes
Wet Space: No
Addition: No
Conversion: No