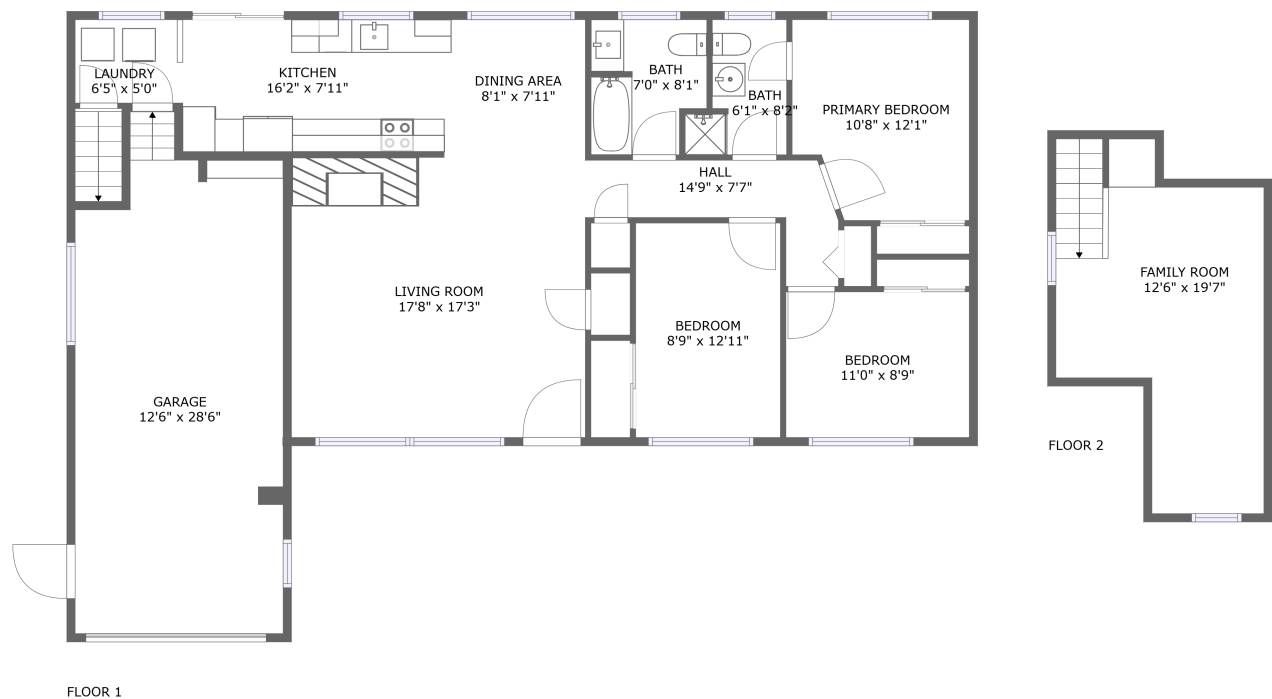


Home report

912 165th Avenue Southeast, West Lake Sammamish, Bellevue,
King County, Washington, United States, 98008




Total Area: 1321 sq. ft


Floor 1: 1128 sq. ft, Floor 2: 193 sq. ft

Excluded: Garage 355 sq. ft, Low ceiling 24 sq. ft, Walls: 147 sq. ft

Property summary

 **2** Floors

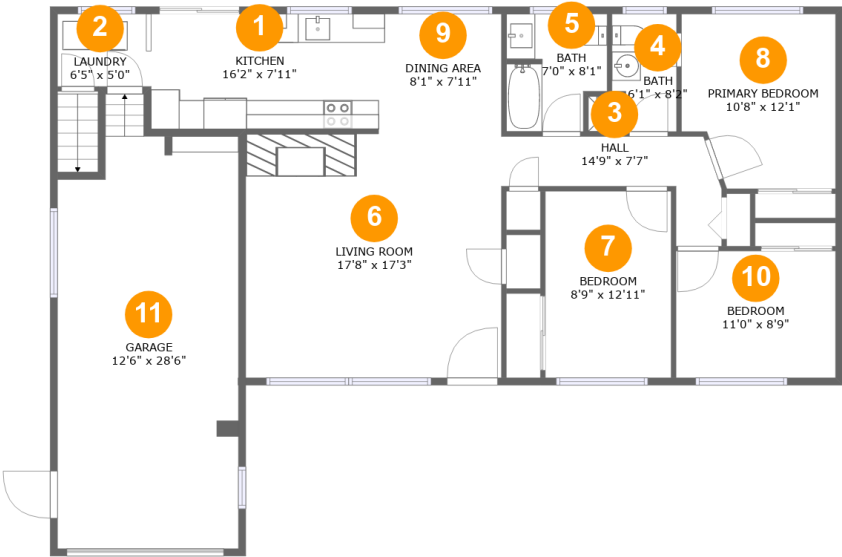
 **3** Bedrooms

 **2** Bathrooms

 **1** Garages

Home report

912 165th Avenue Southeast, West Lake Sammamish, Bellevue,
King County, Washington, United States, 98008



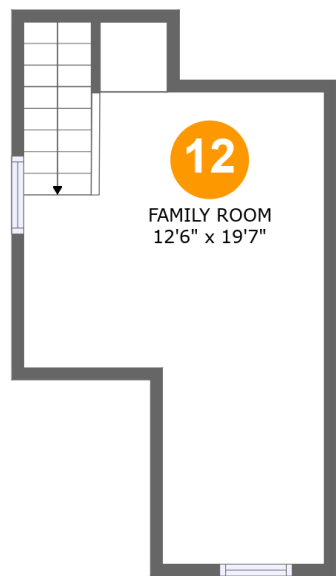
Room dimensions

Floor 1 Total:1128sqft Excluded: 355sqft

#		Max Dimensions	sqft	Included
1	Kitchen	16'2" x 7'11"	128 sq. ft	Yes
2	Laundry	6'5" x 5'0"	33 sq. ft	Yes
3	Hall	14'9" x 7'7"	63 sq. ft	Yes
4	Bath	6'1" x 8'2"	40 sq. ft	Yes
5	Bath	7'0" x 8'1"	51 sq. ft	Yes
6	Living Room	17'8" x 17'3"	302 sq. ft	Yes
7	Bedroom	8'9" x 12'11"	112 sq. ft	Yes
8	Primary Bedroom	10'8" x 12'1"	119 sq. ft	Yes
9	Dining Area	8'1" x 7'11"	64 sq. ft	Yes
10	Bedroom	11'0" x 8'9"	97 sq. ft	Yes
11	Garage	12'6" x 28'6"	354 sq. ft	No

Home report

912 165th Avenue Southeast, West Lake Sammamish, Bellevue,
King County, Washington, United States, 98008



Room dimensions

Floor 2 Total:193sqft Excluded: 24sqft

#		Max Dimensions	sqft	Included
12	Family Room	12'6" x 19'7"	192 sq. ft	Yes

1 Floor 1 - Kitchen



Max Dimensions: 16'2" x 7'11"
Calculated Area: 128 sq. ft
Included: Yes

Heated: Yes
Finished: Yes
Enclosed: Yes
Contiguous: Yes
Permitted: Yes
Wet space: No
Addition: No
Conversion: No

2 Floor 1 - Laundry



Max Dimensions: 6'5" x 5'0"
Calculated Area: 33 sq. ft
Included: Yes

Heated: Yes
Finished: Yes
Enclosed: Yes
Contiguous: Yes
Permitted: Yes
Wet space: No
Addition: No
Conversion: No

3 Floor 1 - Hall



Max Dimensions: 14'9" x 7'7"
Calculated Area: 63 sq. ft
Included: Yes

Heated: Yes
Finished: Yes
Enclosed: Yes
Contiguous: Yes
Permitted: Yes
Wet space: No
Addition: No
Conversion: No

4 Floor 1 - Bath



Max Dimensions: 6'1" x 8'2"
Calculated Area: 40 sq. ft
Included: Yes

Heated: Yes
Finished: Yes
Enclosed: Yes
Contiguous: Yes
Permitted: Yes
Wet space: Yes
Addition: No
Conversion: No

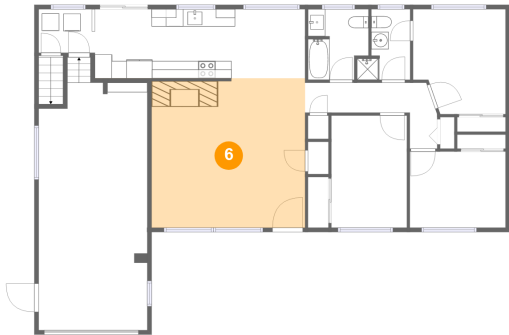
5 Floor 1 - Bath



Max Dimensions: 7'0" x 8'1"
Calculated Area: 51 sq. ft
Included: Yes

Heated: Yes
Finished: Yes
Enclosed: Yes
Contiguous: Yes
Permitted: Yes
Wet space: Yes
Addition: No
Conversion: No

6 Floor 1 - Living Room



Max Dimensions: 17'8" x 17'3"
Calculated Area: 302 sq. ft
Included: Yes

Heated: Yes
Finished: Yes
Enclosed: Yes
Contiguous: Yes
Permitted: Yes
Wet space: No
Addition: No
Conversion: No

7 Floor 1 - Bedroom



Max Dimensions: 8'9" x 12'11"
Calculated Area: 112 sq. ft
Included: Yes

Heated: Yes
Finished: Yes
Enclosed: Yes
Contiguous: Yes
Permitted: Yes
Wet space: No
Addition: No
Conversion: No

8 Floor 1 - Primary Bedroom



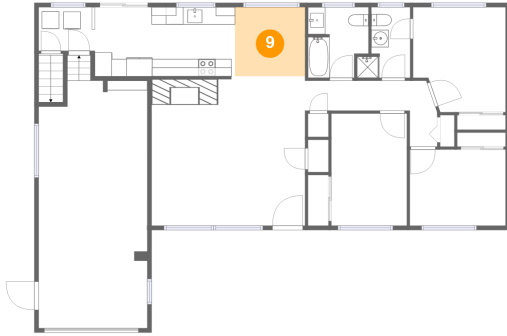
Max Dimensions: 10'8" x 12'1"
Calculated Area: 119 sq. ft
Included: Yes

Heated: Yes
Finished: Yes
Enclosed: Yes
Contiguous: Yes
Permitted: Yes
Wet space: No
Addition: No
Conversion: No

Home report

912 165th Avenue Southeast, West Lake Sammamish, Bellevue,
King County, Washington, United States, 98008

9 Floor 1 - Dining Area



Max Dimensions: 8'1" x 7'11"
Calculated Area: 64 sq. ft
Included: Yes

Heated: Yes
Finished: Yes
Enclosed: Yes
Contiguous: Yes
Permitted: Yes
Wet space: No
Addition: No
Conversion: No

10 Floor 1 - Bedroom



Max Dimensions: 11'0" x 8'9"
Calculated Area: 97 sq. ft
Included: Yes

Heated: Yes
Finished: Yes
Enclosed: Yes
Contiguous: Yes
Permitted: Yes
Wet space: No
Addition: No
Conversion: No

11 Floor 1 - Garage



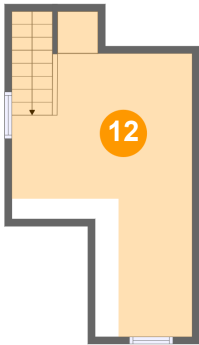
Max Dimensions: 12'6" x 28'6"
Calculated Area: 354 sq. ft
Included: No

Heated: No
Finished: No
Enclosed: Yes
Contiguous: Yes
Permitted: Yes
Wet space: No
Addition: No
Conversion: No

Home report

912 165th Avenue Southeast, West Lake Sammamish, Bellevue,
King County, Washington, United States, 98008

12 Floor 2 - Family Room



Max Dimensions: 12'6" x 19'7"
Calculated Area: 192 sq. ft
Included: Yes

Heated: Yes
Finished: Yes
Enclosed: Yes
Contiguous: Yes
Permitted: Yes
Wet space: No
Addition: No
Conversion: No