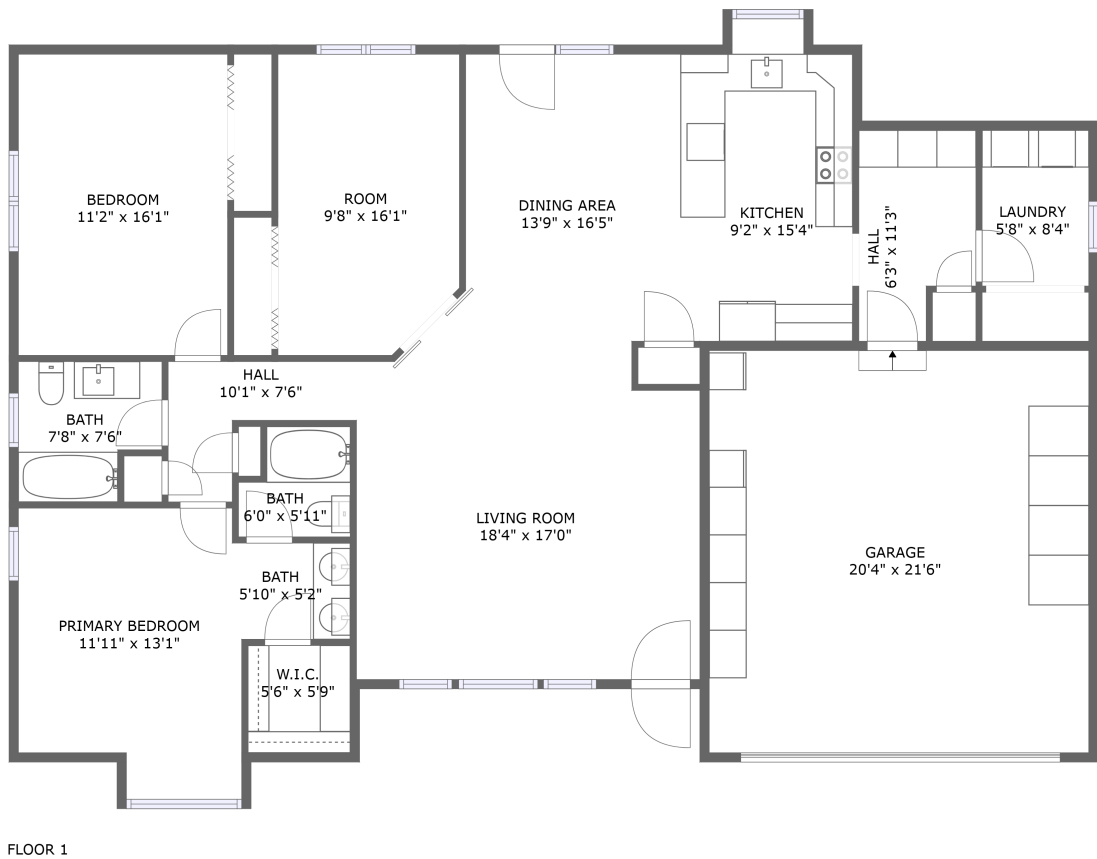


Home report

87 Sunnyside Drive, Jerome, Jerome County, Idaho, United States, 83338



Total Area: 1557 sq. ft

Floor 1: 1557 sq. ft

Excluded: Garage 437 sq. ft, Embedded window 27 sq. ft, Walls: 118 sq. ft

Property summary

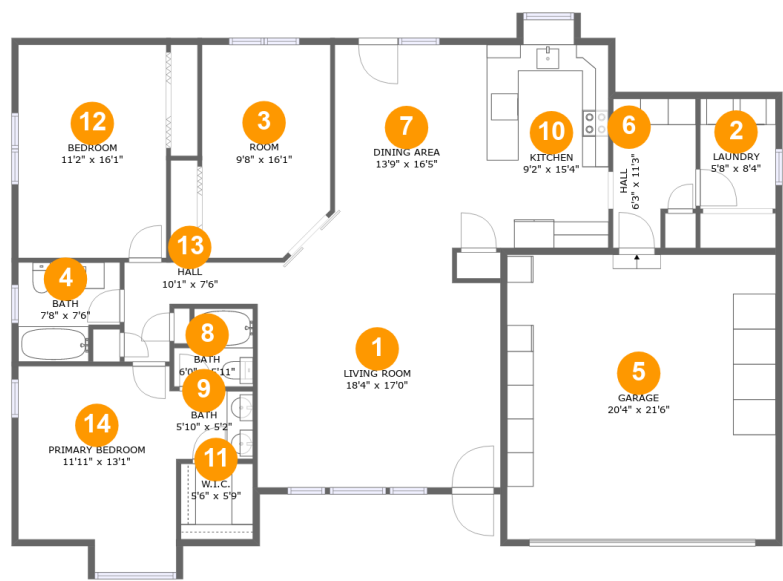
 **1** Floors

 **2** Bedrooms

 **2** Bathrooms

 **1** Garages

87 Sunnyside Drive, Jerome, Jerome County, Idaho, United States, 83338



Room dimensions

Floor 1 Total:1557sqft Excluded: 464sqft

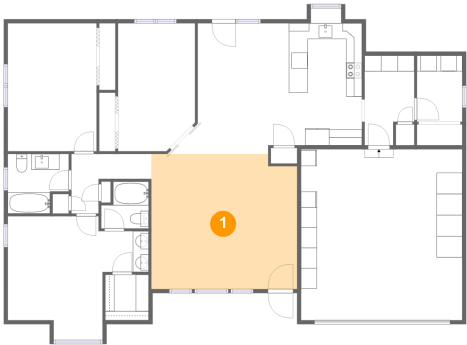
#		Max Dimensions	sqft	Included
1	Living Room	18'4" x 17'0"	307 sq. ft	Yes
2	Laundry	5'8" x 8'4"	48 sq. ft	Yes
3	Room	9'8" x 16'1"	150 sq. ft	Yes
4	Bath	7'8" x 7'6"	51 sq. ft	Yes
5	Garage	20'4" x 21'6"	437 sq. ft	No
6	Hall	6'3" x 11'3"	63 sq. ft	Yes
7	Dining Area	13'9" x 16'5"	194 sq. ft	Yes
8	Bath	6'0" x 5'11"	31 sq. ft	Yes
9	Bath	5'10" x 5'2"	30 sq. ft	Yes
10	Kitchen	9'2" x 15'4"	141 sq. ft	Yes
11	W.I.C.	5'6" x 5'9"	31 sq. ft	Yes

Home report

87 Sunnyside Drive, Jerome, Jerome County, Idaho, United States, 83338

#		Max Dimensions	sqft	Included
12	Bedroom	11'2" x 16'1"	180 sq. ft	Yes
13	Hall	10'1" x 7'6"	47 sq. ft	Yes
14	Primary Bedroom	11'11" x 13'1"	155 sq. ft	Yes

1 Floor 1 - Living Room



Max Dimensions: 18'4" x 17'0"
Calculated Area: 307 sq. ft
Included: Yes

Heated: Yes
Finished: Yes
Enclosed: Yes
Contiguous: Yes
Permitted: Yes
Wet space: No
Addition: No
Conversion: No

2 Floor 1 - Laundry

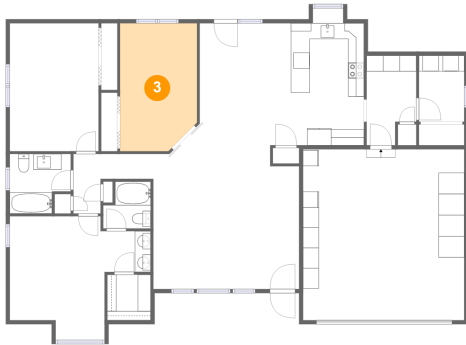


Max Dimensions: 5'8" x 8'4"
Calculated Area: 48 sq. ft
Included: Yes

Heated: Yes
Finished: Yes
Enclosed: Yes
Contiguous: Yes
Permitted: Yes
Wet space: No
Addition: No
Conversion: No

87 Sunnyside Drive, Jerome, Jerome County, Idaho, United States, 83338

3 Floor 1 - Room



Max Dimensions: 9'8" x 16'1"
Calculated Area: 150 sq. ft
Included: Yes

Heated: Yes
Finished: Yes
Enclosed: Yes
Contiguous: Yes
Permitted: Yes
Wet space: No
Addition: No
Conversion: No

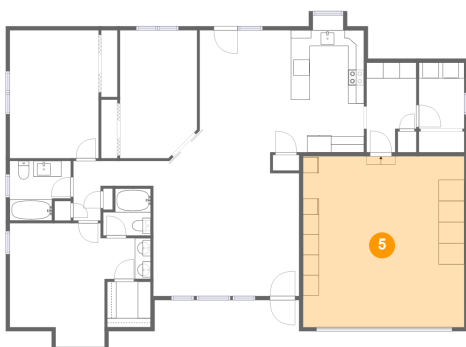
4 Floor 1 - Bath



Max Dimensions: 7'8" x 7'6"
Calculated Area: 51 sq. ft
Included: Yes

Heated: Yes
Finished: Yes
Enclosed: Yes
Contiguous: Yes
Permitted: Yes
Wet space: Yes
Addition: No
Conversion: No

5 Floor 1 - Garage

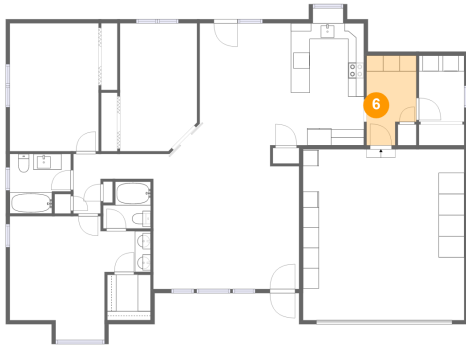


Max Dimensions: 20'4" x 21'6"
Calculated Area: 437 sq. ft
Included: No

Heated: No
Finished: No
Enclosed: Yes
Contiguous: Yes
Permitted: Yes
Wet space: No
Addition: No
Conversion: No

87 Sunnyside Drive, Jerome, Jerome County, Idaho, United States, 83338

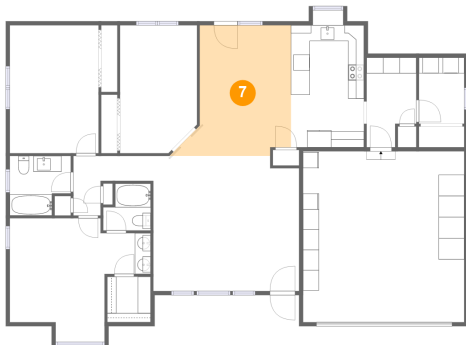
6 Floor 1 - Hall



Max Dimensions: 6'3" x 11'3"
Calculated Area: 63 sq. ft
Included: Yes

Heated: Yes
Finished: Yes
Enclosed: Yes
Contiguous: Yes
Permitted: Yes
Wet space: No
Addition: No
Conversion: No

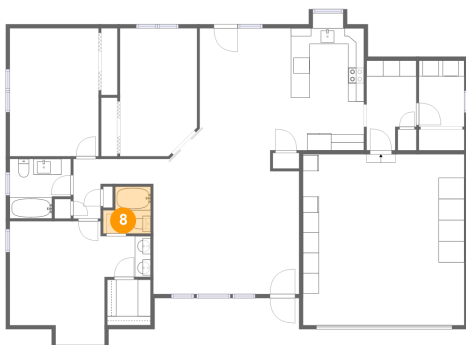
7 Floor 1 - Dining Area



Max Dimensions: 13'9" x 16'5"
Calculated Area: 194 sq. ft
Included: Yes

Heated: Yes
Finished: Yes
Enclosed: Yes
Contiguous: Yes
Permitted: Yes
Wet space: No
Addition: No
Conversion: No

8 Floor 1 - Bath

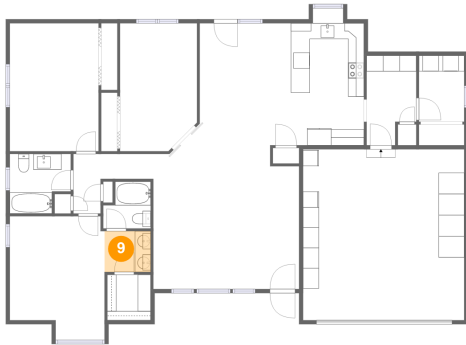


Max Dimensions: 6'0" x 5'11"
Calculated Area: 31 sq. ft
Included: Yes

Heated: Yes
Finished: Yes
Enclosed: Yes
Contiguous: Yes
Permitted: Yes
Wet space: Yes
Addition: No
Conversion: No

87 Sunnyside Drive, Jerome, Jerome County, Idaho, United States, 83338

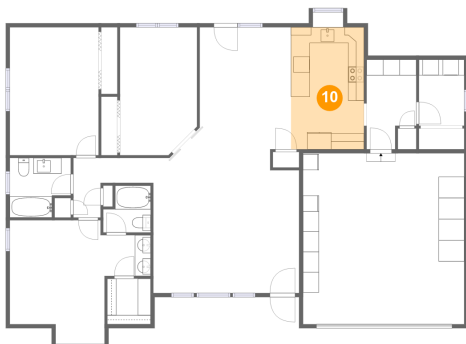
9 Floor 1 - Bath



Max Dimensions: 5'10" x 5'2"
Calculated Area: 30 sq. ft
Included: Yes

Heated: Yes
Finished: Yes
Enclosed: Yes
Contiguous: Yes
Permitted: Yes
Wet space: Yes
Addition: No
Conversion: No

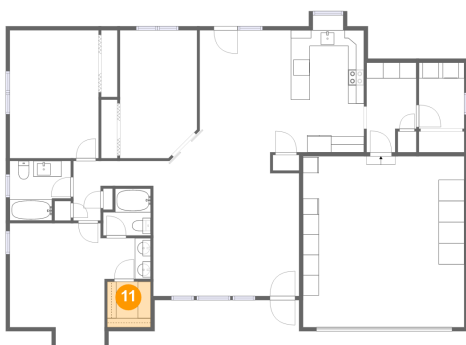
10 Floor 1 - Kitchen



Max Dimensions: 9'2" x 15'4"
Calculated Area: 141 sq. ft
Included: Yes

Heated: Yes
Finished: Yes
Enclosed: Yes
Contiguous: Yes
Permitted: Yes
Wet space: No
Addition: No
Conversion: No

11 Floor 1 - W.I.C.

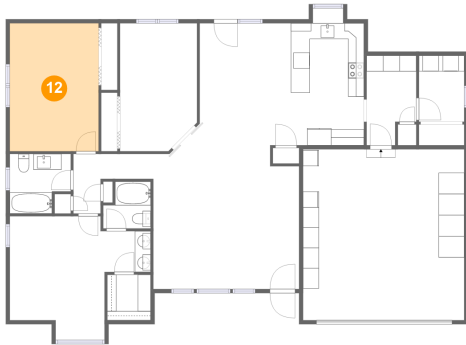


Max Dimensions: 5'6" x 5'9"
Calculated Area: 31 sq. ft
Included: Yes

Heated: Yes
Finished: Yes
Enclosed: Yes
Contiguous: Yes
Permitted: Yes
Wet space: No
Addition: No
Conversion: No

87 Sunnyside Drive, Jerome, Jerome County, Idaho, United States, 83338

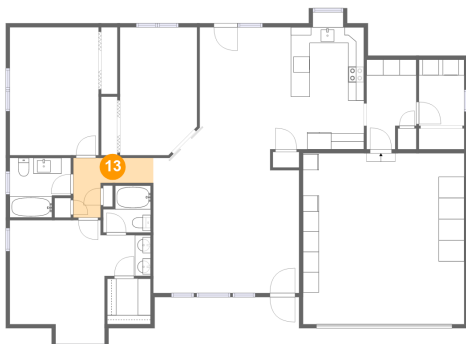
12 Floor 1 - Bedroom



Max Dimensions: 11'2" x 16'1"
Calculated Area: 180 sq. ft
Included: Yes

Heated: Yes
Finished: Yes
Enclosed: Yes
Contiguous: Yes
Permitted: Yes
Wet space: No
Addition: No
Conversion: No

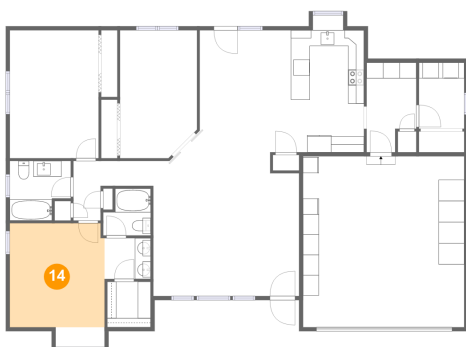
13 Floor 1 - Hall



Max Dimensions: 10'1" x 7'6"
Calculated Area: 47 sq. ft
Included: Yes

Heated: Yes
Finished: Yes
Enclosed: Yes
Contiguous: Yes
Permitted: Yes
Wet space: No
Addition: No
Conversion: No

14 Floor 1 - Primary Bedroom



Max Dimensions: 11'11" x 13'1"
Calculated Area: 155 sq. ft
Included: Yes

Heated: Yes
Finished: Yes
Enclosed: Yes
Contiguous: Yes
Permitted: Yes
Wet space: No
Addition: No
Conversion: No