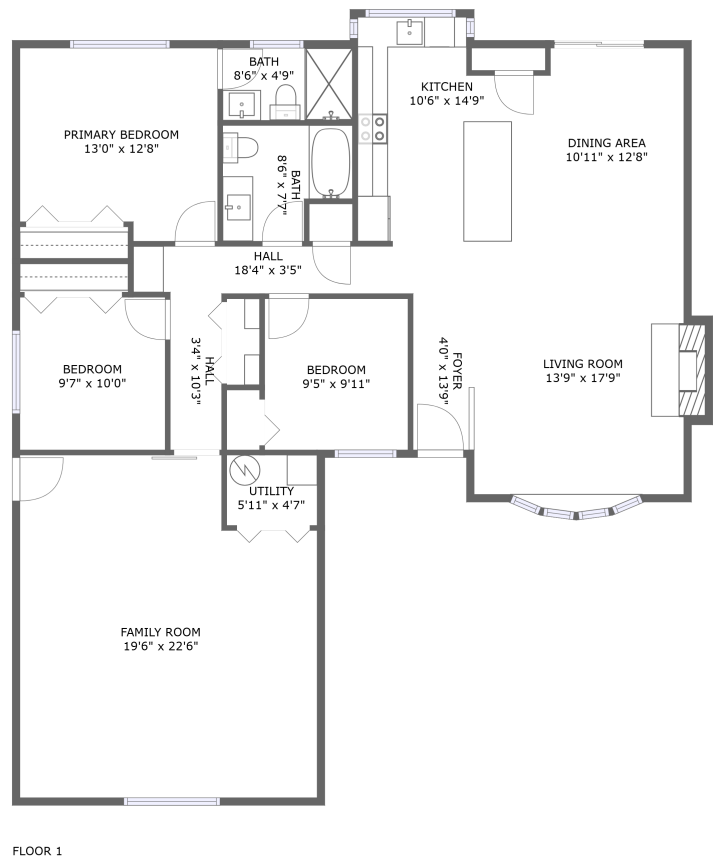




Home report


2565 Southwest 211th Court, Cooper Mountain - Aloha North,  
Aloha, Washington County, Oregon, United States, 97003





Property summary


 **0** Garages


 **3** Bedrooms

 **2** Bathrooms

 **0** Half baths

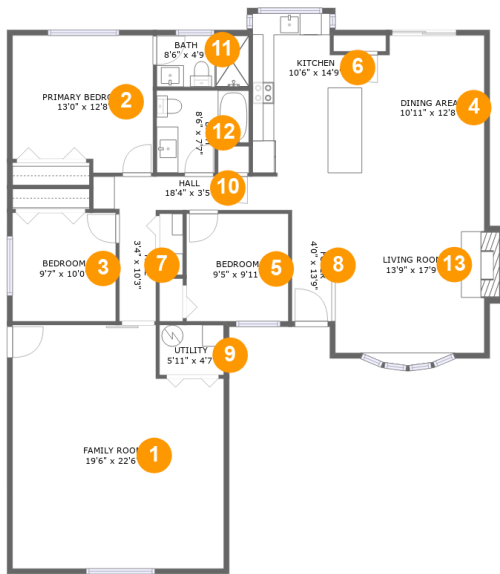
 **1** Floors

 **1,757** Gross living area sqft

 **1,767** Total sqft

Home report

2565 Southwest 211th Court, Cooper Mountain - Aloha North,  
Aloha, Washington County, Oregon, United States, 97003



Room dimensions

Floor 1 Total sqft: 1767    Living area: 1757

#		Dimensions	sqft	Counted as living area
1	Family Room	19'6" x 22'6"	408 sq. ft	Yes
2	Primary Bedroom	13'0" x 12'8"	155 sq. ft	Yes
3	Bedroom	9'7" x 10'0"	96 sq. ft	Yes
4	Dining Area	10'11" x 12'8"	134 sq. ft	Yes
5	Bedroom	9'5" x 9'11"	93 sq. ft	Yes
6	Kitchen	10'6" x 14'9"	142 sq. ft	Yes
7	Hall	3'4" x 10'3"	35 sq. ft	Yes
8	Foyer	4'0" x 13'9"	55 sq. ft	Yes
9	Utility	5'11" x 4'7"	27 sq. ft	Yes
10	Hall	18'4" x 3'5"	57 sq. ft	Yes
11	Bath	8'6" x 4'9"	41 sq. ft	Yes

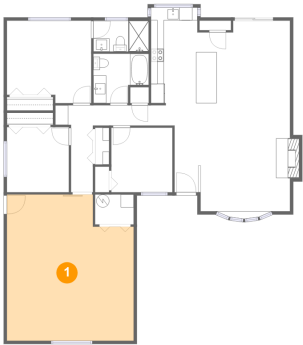
Home report

2565 Southwest 211th Court, Cooper Mountain - Aloha North,  
Aloha, Washington County, Oregon, United States, 97003

#		Dimensions	sqft	Counted as living area
12	Bath	8'6" x 7'7"	56 sq. ft	Yes
13	Living Room	13'9" x 17'9"	244 sq. ft	Yes

2565 Southwest 211th Court, Cooper Mountain - Aloha North,  
Aloha, Washington County, Oregon, United States, 97003

1 Floor 1 - Family Room



Dimensions: 19'6" x 22'6"  
Area: 408 sq. ft  
Counted as living area: Yes

Heated: Yes  
Finished: Yes  
Enclosed: Yes  
Contiguous: Yes  
Permitted: Yes  
Wet space: No  
Addition: No  
Conversion: No

2 Floor 1 - Primary Bedroom



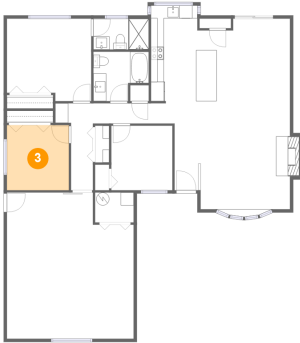
Dimensions: 13'0" x 12'8"  
Area: 155 sq. ft  
Counted as living area: Yes

Heated: Yes  
Finished: Yes  
Enclosed: Yes  
Contiguous: Yes  
Permitted: Yes  
Wet space: No  
Addition: No  
Conversion: No

2565 Southwest 211th Court, Cooper Mountain - Aloha North,  
Aloha, Washington County, Oregon, United States, 97003

**3 Floor 1 - Bedroom**

---



Dimensions: 9'7" x 10'0"  
Area: 96 sq. ft  
Counted as living area: Yes

Heated: Yes  
Finished: Yes  
Enclosed: Yes  
Contiguous: Yes  
Permitted: Yes  
Wet space: No  
Addition: No  
Conversion: No

**4 Floor 1 - Dining Area**

---

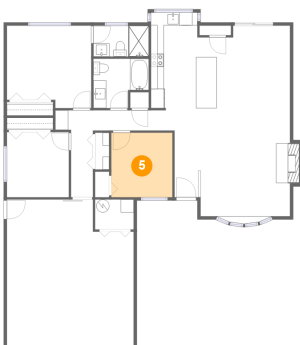


Dimensions: 10'11" x 12'8"  
Area: 134 sq. ft  
Counted as living area: Yes

Heated: Yes  
Finished: Yes  
Enclosed: Yes  
Contiguous: Yes  
Permitted: Yes  
Wet space: No  
Addition: No  
Conversion: No

**5 Floor 1 - Bedroom**

---

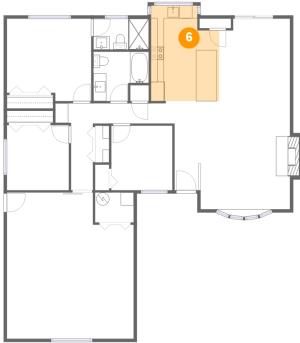


Dimensions: 9'5" x 9'11"  
Area: 93 sq. ft  
Counted as living area: Yes

Heated: Yes  
Finished: Yes  
Enclosed: Yes  
Contiguous: Yes  
Permitted: Yes  
Wet space: No  
Addition: No  
Conversion: No

2565 Southwest 211th Court, Cooper Mountain - Aloha North,  
Aloha, Washington County, Oregon, United States, 97003

## 6 Floor 1 - Kitchen



Dimensions: 10'6" x 14'9"  
Area: 142 sq. ft  
Counted as living area: Yes

Heated: Yes  
Finished: Yes  
Enclosed: Yes  
Contiguous: Yes  
Permitted: Yes  
Wet space: No  
Addition: No  
Conversion: No

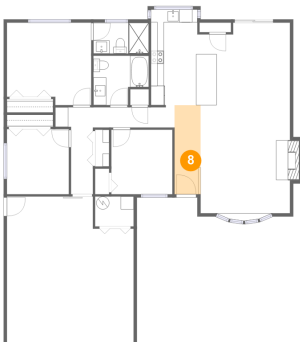
## 7 Floor 1 - Hall



Dimensions: 3'4" x 10'3"  
Area: 35 sq. ft  
Counted as living area: Yes

Heated: Yes  
Finished: Yes  
Enclosed: Yes  
Contiguous: Yes  
Permitted: Yes  
Wet space: No  
Addition: No  
Conversion: No

## 8 Floor 1 - Foyer

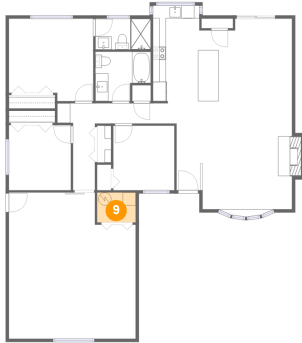


Dimensions: 4'0" x 13'9"  
Area: 55 sq. ft  
Counted as living area: Yes

Heated: Yes  
Finished: Yes  
Enclosed: Yes  
Contiguous: Yes  
Permitted: Yes  
Wet space: No  
Addition: No  
Conversion: No

2565 Southwest 211th Court, Cooper Mountain - Aloha North,  
Aloha, Washington County, Oregon, United States, 97003

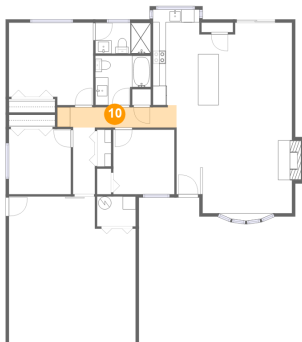
## 9 Floor 1 - Utility



Dimensions: 5'11" x 4'7"  
Area: 27 sq. ft  
Counted as living area: Yes

Heated: Yes  
Finished: Yes  
Enclosed: Yes  
Contiguous: Yes  
Permitted: Yes  
Wet space: No  
Addition: No  
Conversion: No

## 10 Floor 1 - Hall



Dimensions: 18'4" x 3'5"  
Area: 57 sq. ft  
Counted as living area: Yes

Heated: Yes  
Finished: Yes  
Enclosed: Yes  
Contiguous: Yes  
Permitted: Yes  
Wet space: No  
Addition: No  
Conversion: No

## 11 Floor 1 - Bath

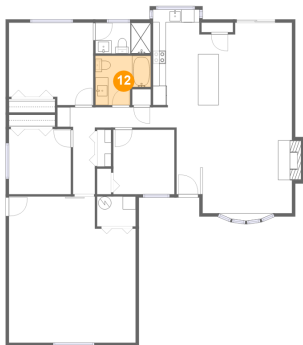


Dimensions: 8'6" x 4'9"  
Area: 41 sq. ft  
Counted as living area: Yes

Heated: Yes  
Finished: Yes  
Enclosed: Yes  
Contiguous: Yes  
Permitted: Yes  
Wet space: Yes  
Addition: No  
Conversion: No

2565 Southwest 211th Court, Cooper Mountain - Aloha North,  
Aloha, Washington County, Oregon, United States, 97003

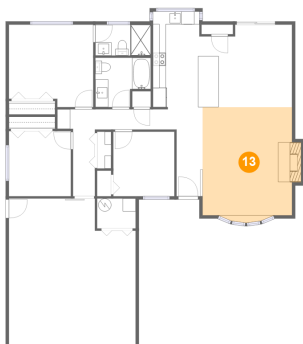
12 Floor 1 - Bath



Dimensions: 8'6" x 7'7"  
Area: 56 sq. ft  
Counted as living area: Yes

Heated: Yes  
Finished: Yes  
Enclosed: Yes  
Contiguous: Yes  
Permitted: Yes  
Wet space: Yes  
Addition: No  
Conversion: No

13 Floor 1 - Living Room



Dimensions: 13'9" x 17'9"  
Area: 244 sq. ft  
Counted as living area: Yes

Heated: Yes  
Finished: Yes  
Enclosed: Yes  
Contiguous: Yes  
Permitted: Yes  
Wet space: No  
Addition: No  
Conversion: No