

1170 Riverbend Drive, Rocky Mount, Franklin County, Virginia, United States, 24151

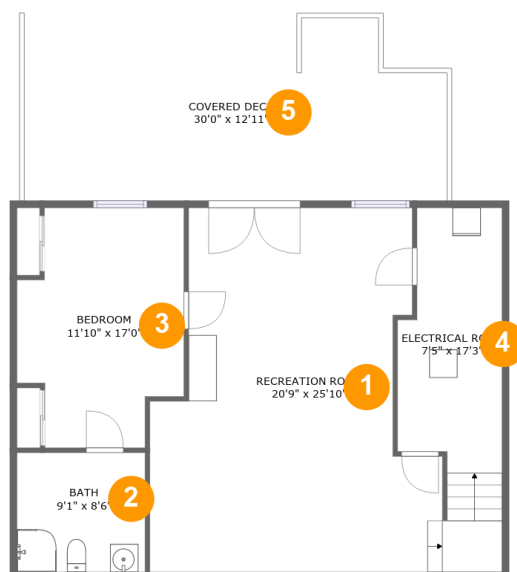


Property summary

 **1** Garages  **4** Bedrooms  **3** Bathrooms  **1** Half baths

 **3** Floors  **3,186** Gross living area sqft  **4,634** Total sqft

1170 Riverbend Drive, Rocky Mount, Franklin County, Virginia, United States, 24151



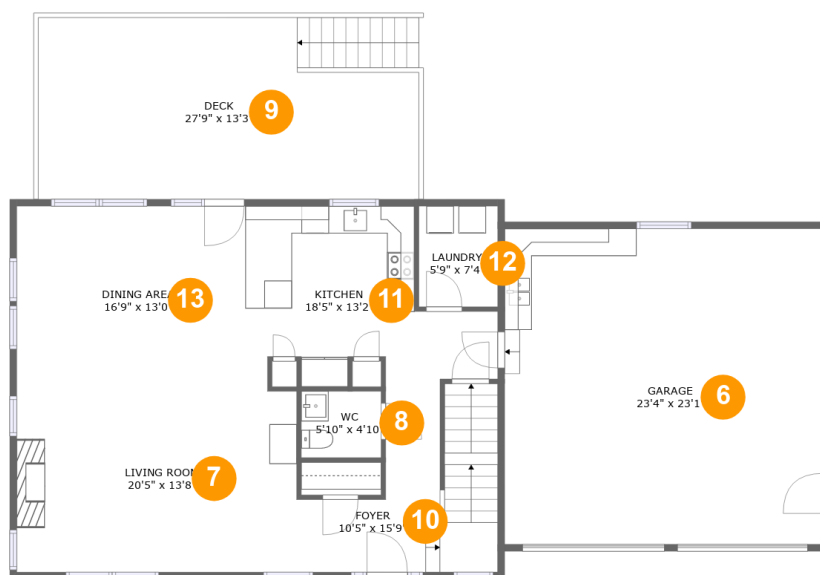
Room dimensions

Floor 1

Total sqft: 1319 Living area: 821

#		Dimensions	sqft	Counted as living area
1	Recreation Room	20'9" x 25'10"	482 sq. ft	Yes
2	Bath	9'1" x 8'6"	77 sq. ft	Yes
3	Bedroom	11'10" x 17'0"	173 sq. ft	Yes
4	Room	7'5" x 17'3"	117 sq. ft	No
5	Outdoor	30'0" x 12'11"	369 sq. ft	No

1170 Riverbend Drive, Rocky Mount, Franklin County, Virginia, United States, 24151



Room dimensions

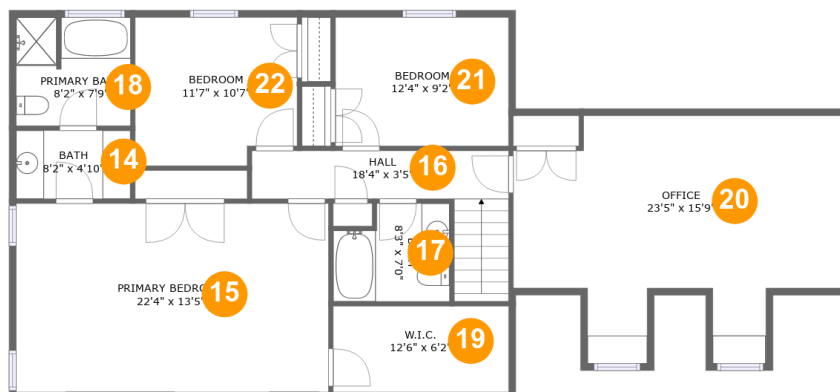
Floor 2

Total sqft: 1941

Living area: 1003

#		Dimensions	sqft	Counted as living area
6	Garage	23'4" x 23'1"	537 sq. ft	No
7	Living Room	20'5" x 13'8"	279 sq. ft	Yes
8	Bath	5'10" x 4'10"	28 sq. ft	Yes
9	Outdoor	27'9" x 13'3"	366 sq. ft	No
10	Entry	10'5" x 15'9"	148 sq. ft	Yes
11	Kitchen	18'5" x 13'2"	178 sq. ft	Yes
12	Utility	5'9" x 7'4"	42 sq. ft	Yes
13	Dining Room	16'9" x 13'0"	218 sq. ft	Yes

1170 Riverbend Drive, Rocky Mount, Franklin County, Virginia, United States, 24151



Room dimensions

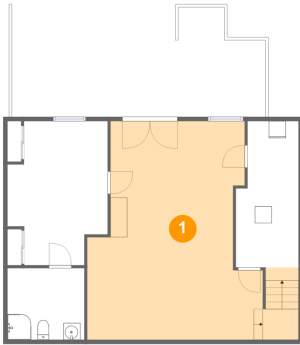
Floor 3

Total sqft: 1374 Living area: 1362

#		Dimensions	sqft	Counted as living area
14	Bath	8'2" x 4'10"	40 sq. ft	Yes
15	Bedroom	22'4" x 13'5"	300 sq. ft	Yes
16	Hall	18'4" x 3'5"	91 sq. ft	Yes
17	Bath	8'3" x 7'0"	52 sq. ft	Yes
18	Bath	8'2" x 7'9"	62 sq. ft	Yes
19	Cl	12'6" x 6'2"	77 sq. ft	Yes
20	Office	23'5" x 15'9"	315 sq. ft	Yes
21	Bedroom	12'4" x 9'2"	114 sq. ft	Yes
22	Bedroom	11'7" x 10'7"	118 sq. ft	Yes

1170 Riverbend Drive, Rocky Mount, Franklin County, Virginia, United States, 24151

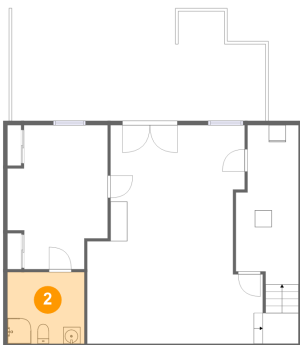
1 Floor 1 - Recreation Room



Dimensions: 20'9" x 25'10"
Area: 482 sq. ft
Counted as living area: Yes

Heated: Yes
Finished: Yes
Enclosed: Yes
Contiguous: Yes
Permitted: Yes
Wet space: No
Addition: No
Conversion: No

2 Floor 1 - Bath

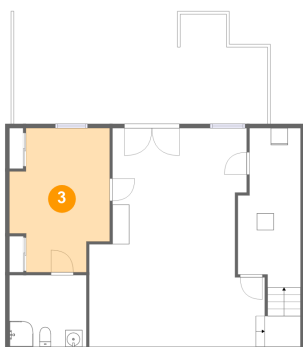


Dimensions: 9'1" x 8'6"
Area: 77 sq. ft
Counted as living area: Yes

Heated: Yes
Finished: Yes
Enclosed: Yes
Contiguous: Yes
Permitted: Yes
Wet space: Yes
Addition: No
Conversion: No

1170 Riverbend Drive, Rocky Mount, Franklin County, Virginia, United States, 24151

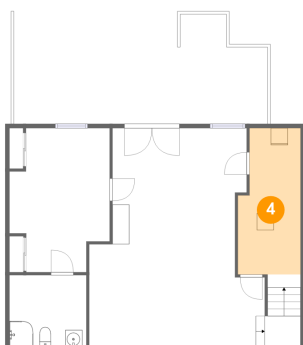
3 Floor 1 - Bedroom



Dimensions: 11'10" x 17'0"
Area: 173 sq. ft
Counted as living area: Yes

Heated: Yes
Finished: Yes
Enclosed: Yes
Contiguous: Yes
Permitted: Yes
Wet space: No
Addition: No
Conversion: No

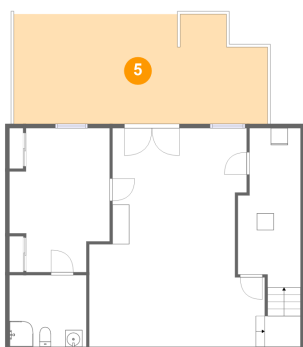
4 Floor 1 - Room



Dimensions: 7'5" x 17'3"
Area: 117 sq. ft
Counted as living area: No

Heated: No
Finished: No
Enclosed: Yes
Contiguous: Yes
Permitted: Yes
Wet space: No
Addition: No
Conversion: No

5 Floor 1 - Outdoor



Dimensions: 30'0" x 12'11"
Area: 369 sq. ft
Counted as living area: No

Heated: No
Finished: No
Enclosed: No
Contiguous: Yes
Permitted: Yes
Wet space: No
Addition: No
Conversion: No

1170 Riverbend Drive, Rocky Mount, Franklin County, Virginia, United States, 24151

6 Floor 2 - Garage



Dimensions: 23'4" x 23'1"
Area: 537 sq. ft
Counted as living area: No

Heated: No
Finished: No
Enclosed: Yes
Contiguous: Yes
Permitted: Yes
Wet space: No
Addition: No
Conversion: No

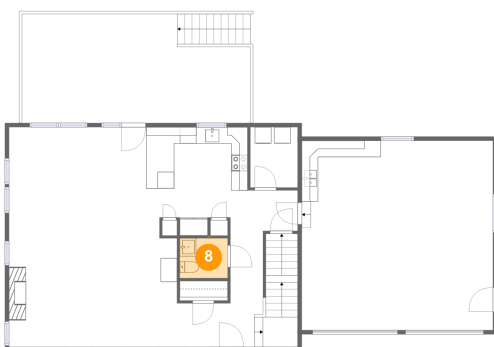
7 Floor 2 - Living Room



Dimensions: 20'5" x 13'8"
Area: 279 sq. ft
Counted as living area: Yes

Heated: Yes
Finished: Yes
Enclosed: Yes
Contiguous: Yes
Permitted: Yes
Wet space: No
Addition: No
Conversion: No

8 Floor 2 - Bath

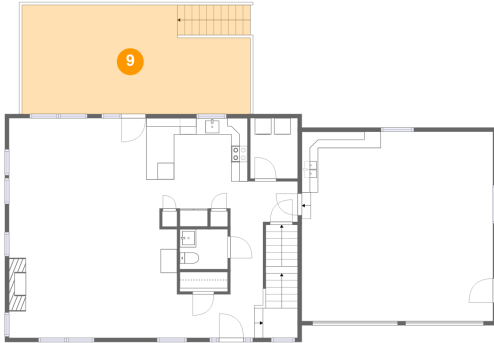


Dimensions: 5'10" x 4'10"
Area: 28 sq. ft
Counted as living area: Yes

Heated: Yes
Finished: Yes
Enclosed: Yes
Contiguous: Yes
Permitted: Yes
Wet space: Yes
Addition: No
Conversion: No

1170 Riverbend Drive, Rocky Mount, Franklin County, Virginia, United States, 24151

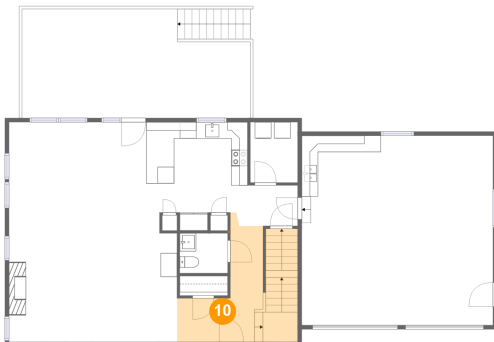
9 Floor 2 - Outdoor



Dimensions: 27'9" x 13'3"
Area: 366 sq. ft
Counted as living area: No

Heated: No
Finished: Yes
Enclosed: No
Contiguous: Yes
Permitted: Yes
Wet space: No
Addition: No
Conversion: No

10 Floor 2 - Entry



Dimensions: 10'5" x 15'9"
Area: 148 sq. ft
Counted as living area: Yes

Heated: Yes
Finished: Yes
Enclosed: Yes
Contiguous: Yes
Permitted: Yes
Wet space: No
Addition: No
Conversion: No

11 Floor 2 - Kitchen



Dimensions: 18'5" x 13'2"
Area: 178 sq. ft
Counted as living area: Yes

Heated: Yes
Finished: Yes
Enclosed: Yes
Contiguous: Yes
Permitted: Yes
Wet space: No
Addition: No
Conversion: No

1170 Riverbend Drive, Rocky Mount, Franklin County,
Virginia, United States, 24151

12 Floor 2 - Utility



Dimensions: 5'9" x 7'4"
Area: 42 sq. ft
Counted as living area: Yes

Heated: Yes
Finished: Yes
Enclosed: Yes
Contiguous: Yes
Permitted: Yes
Wet space: No
Addition: No
Conversion: No

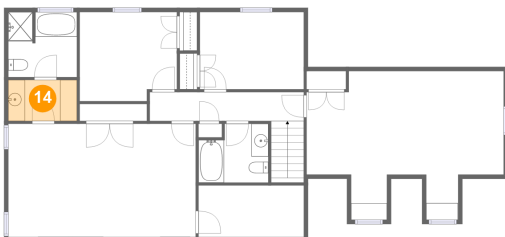
13 Floor 2 - Dining Room



Dimensions: 16'9" x 13'0"
Area: 218 sq. ft
Counted as living area: Yes

Heated: Yes
Finished: Yes
Enclosed: Yes
Contiguous: Yes
Permitted: Yes
Wet space: No
Addition: No
Conversion: No

14 Floor 3 - Bath



Dimensions: 8'2" x 4'10"
Area: 40 sq. ft
Counted as living area: Yes

Heated: Yes
Finished: Yes
Enclosed: Yes
Contiguous: Yes
Permitted: Yes
Wet space: Yes
Addition: No
Conversion: No

1170 Riverbend Drive, Rocky Mount, Franklin County, Virginia, United States, 24151

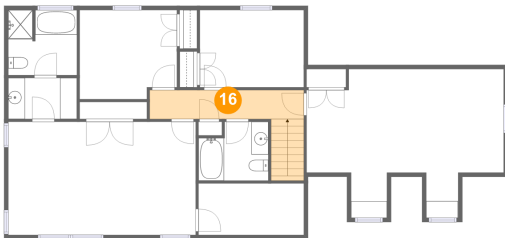
15 Floor 3 - Bedroom



Dimensions: 22'4" x 13'5"
Area: 300 sq. ft
Counted as living area: Yes

Heated: Yes
Finished: Yes
Enclosed: Yes
Contiguous: Yes
Permitted: Yes
Wet space: No
Addition: No
Conversion: No

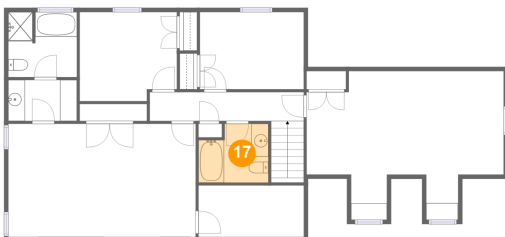
16 Floor 3 - Hall



Dimensions: 18'4" x 3'5"
Area: 91 sq. ft
Counted as living area: Yes

Heated: Yes
Finished: Yes
Enclosed: Yes
Contiguous: Yes
Permitted: Yes
Wet space: No
Addition: No
Conversion: No

17 Floor 3 - Bath



Dimensions: 8'3" x 7'0"
Area: 52 sq. ft
Counted as living area: Yes

Heated: Yes
Finished: Yes
Enclosed: Yes
Contiguous: Yes
Permitted: Yes
Wet space: Yes
Addition: No
Conversion: No

1170 Riverbend Drive, Rocky Mount, Franklin County, Virginia, United States, 24151

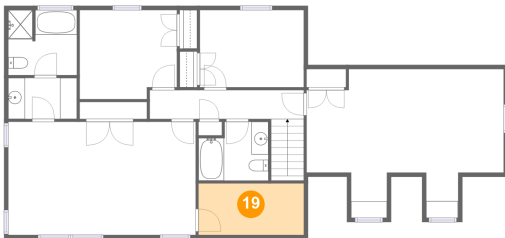
18 Floor 3 - Bath



Dimensions: 8'2" x 7'9"
Area: 62 sq. ft
Counted as living area: Yes

Heated: Yes
Finished: Yes
Enclosed: Yes
Contiguous: Yes
Permitted: Yes
Wet space: Yes
Addition: No
Conversion: No

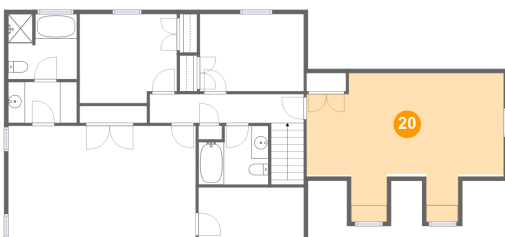
19 Floor 3 - Cl



Dimensions: 12'6" x 6'2"
Area: 77 sq. ft
Counted as living area: Yes

Heated: Yes
Finished: Yes
Enclosed: Yes
Contiguous: Yes
Permitted: Yes
Wet space: No
Addition: No
Conversion: No

20 Floor 3 - Office

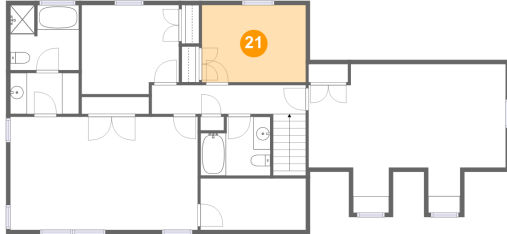


Dimensions: 23'5" x 15'9"
Area: 315 sq. ft
Counted as living area: Yes

Heated: Yes
Finished: Yes
Enclosed: Yes
Contiguous: Yes
Permitted: Yes
Wet space: No
Addition: No
Conversion: No

1170 Riverbend Drive, Rocky Mount, Franklin County, Virginia, United States, 24151

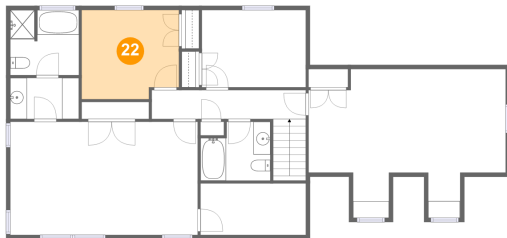
21 Floor 3 - Bedroom



Dimensions: 12'4" x 9'2"
Area: 114 sq. ft
Counted as living area: Yes

Heated: Yes
Finished: Yes
Enclosed: Yes
Contiguous: Yes
Permitted: Yes
Wet space: No
Addition: No
Conversion: No

22 Floor 3 - Bedroom



Dimensions: 11'7" x 10'7"
Area: 118 sq. ft
Counted as living area: Yes

Heated: Yes
Finished: Yes
Enclosed: Yes
Contiguous: Yes
Permitted: Yes
Wet space: No
Addition: No
Conversion: No