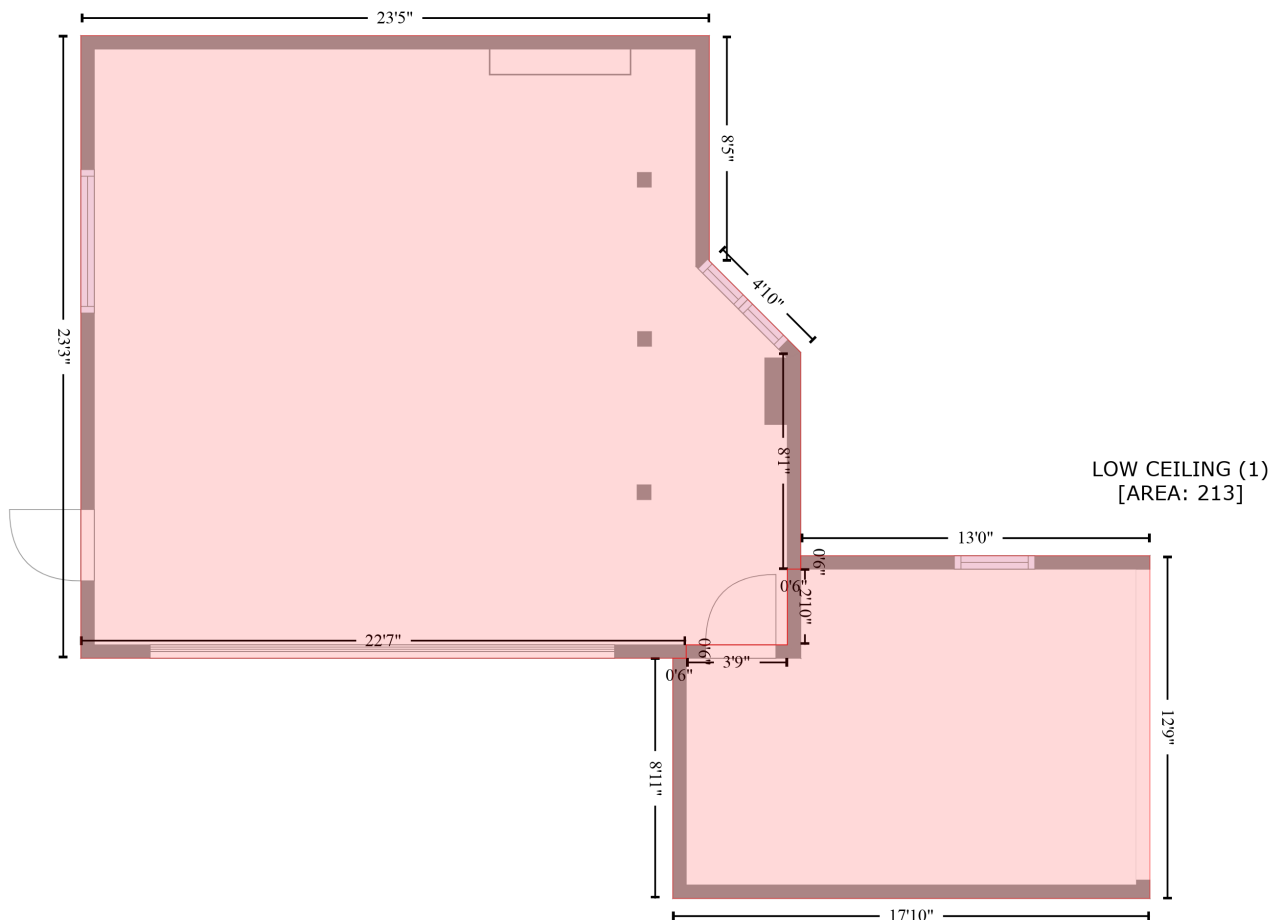


3121 Udall Street, Roseville - Fleet Ridge, San Diego, San Diego County, California, United States, 92106

Gross Living Area: 2275 sq. ft

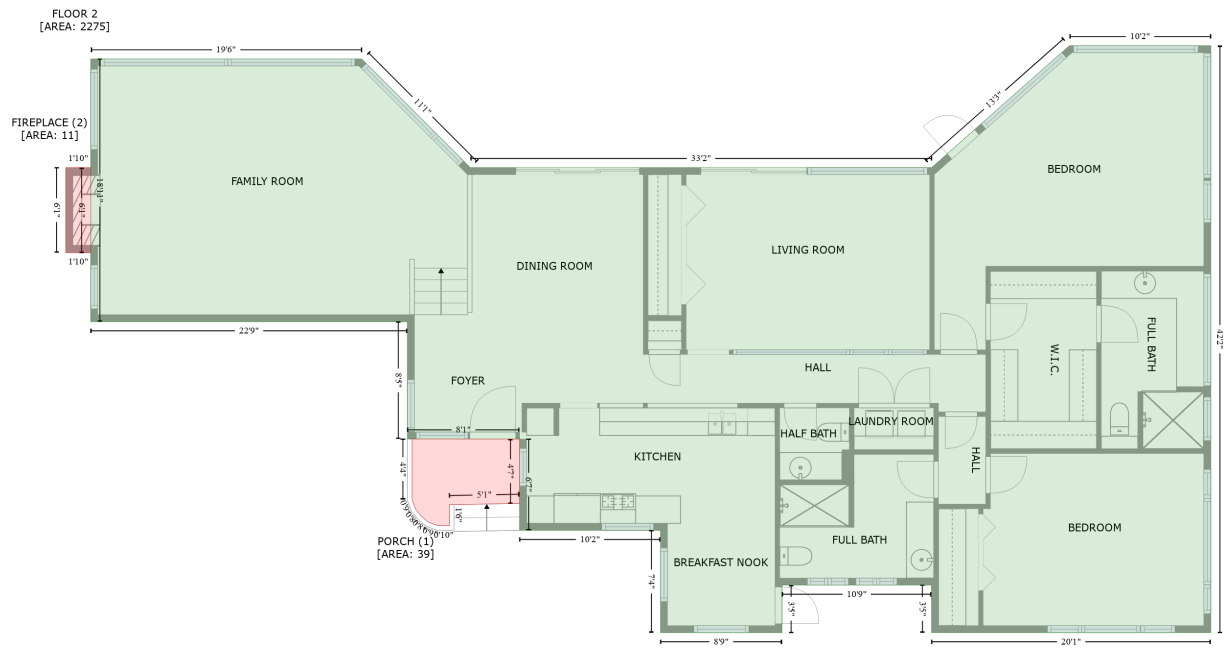
GARAGE (2)
[AREA: 585]



Space	Area (sq. ft)	Calculation <small>Coordinate Polygon Area Algorithm using inches</small>
LOW CEILING (Non-living area)	213	$-\left((504.8 + 504.8) * (248.3 - 401.7) + (504.8 + 291.2) * (401.7 - 401.7) + (291.2 + 291.2) * (401.7 - 294.2) + (291.2 + 297.2) * (294.2 - 294.2) + (297.2 + 297.2) * (294.2 - 288.2) + (297.2 + 342.5) * (288.2 - 288.2) + (342.5 + 342.5) * (288.2 - 254.3) + (342.5 + 348.5) * (254.3 - 254.3) + (348.5 + 348.5) * (254.3 - 248.3) + (348.5 + 504.8) * (248.3 - 248.3)\right) * 0.5 * 0.00694$
GARAGE (Non-living area)	585	$-\left((307.6 + 307.6) * (15.7 - 116.4) + (307.6 + 348.5) * (116.4 - 157.4) + (348.5 + 348.5) * (157.4 - 254.3) + (348.5 + 342.5) * (254.3 - 254.3) + (342.5 + 342.5) * (254.3 - 288.2) + (342.5 + 297.2) * (288.2 - 288.2) + (297.2 + 297.2) * (288.2 - 294.2) + (297.2 + 26.3) * (294.2 - 294.2) + (26.3 + 26.3) * (294.2 - 15.7) + (26.3 + 307.6) * (15.7 - 15.7)\right) * 0.5 * 0.00694$

3121 Udall Street, Roseville - Fleet Ridge, San Diego, San Diego County, California, United States, 92106

Gross Living Area: 2275 sq. ft



Space	Area (sq. ft)	Calculation
FLOOR 2 (Living area)	2275	Coordinate Polygon Area Algorithm using inches $-(984.7 + 984.7) * (62.5 - 568.6) + (984.7 + 743.7) * (568.6 - 568.6) + (743.7 + 743.6) * (568.6 - 527.6) + (743.6 + 614.6) * (527.6 - 527.6) + (614.6 + 614.6) * (527.6 - 568.6) + (614.6 + 509.7) * (568.6 - 568.6) + (509.7 + 509.7) * (568.6 - 480.4) + (509.7 + 388.1) * (480.4 - 480.4) + (388.1 + 388.1) * (480.4 - 401.7) + (388.1 + 291.2) * (401.7 - 401.7) + (291.2 + 291.2) * (401.7 - 300.5) + (291.2 + 17.9) * (300.5 - 300.5) + (17.9 + 17.9) * (300.5 - 73.9) + (17.9 + 251.8) * (73.9 - 73.9) + (251.8 + 345.5) * (73.9 - 167.6) + (345.5 + 743.8) * (167.6 - 167.6) + (743.8 + 862.7) * (167.6 - 62.5) + (862.7 + 984.7) * (62.5 - 62.5) * 0.5 * 0.00694$
PORCH (Non-living area)	39	$-(388.1 + 388.1) * (401.7 - 457.1) + (388.1 + 327.5) * (457.1 - 458.2) + (327.5 + 327.5) * (458.2 - 476.4) + (327.5 + 317.6) * (476.4 - 476.4) + (317.6 + 309.5) * (476.4 - 473.4) + (309.5 + 303.6) * (473.4 - 468.5) + (303.6 + 298.4) * (468.5 - 462.3) + (298.4 + 295.2) * (462.3 - 453.7) + (295.2 + 295.2) * (453.7 - 401.7) + (295.2 + 388.1) * (401.7 - 401.7) * 0.5 * 0.00694$
FIREPLACE (Non-living area)	11	$-(17.9 + 17.9) * (167.6 - 241.1) + (17.9 + -3.7) * (241.1 - 241.1) + (-3.7 + -3.7) * (241.1 - 167.6) + (-3.7 + 17.9) * (167.6 - 167.6) * 0.5 * 0.00694$