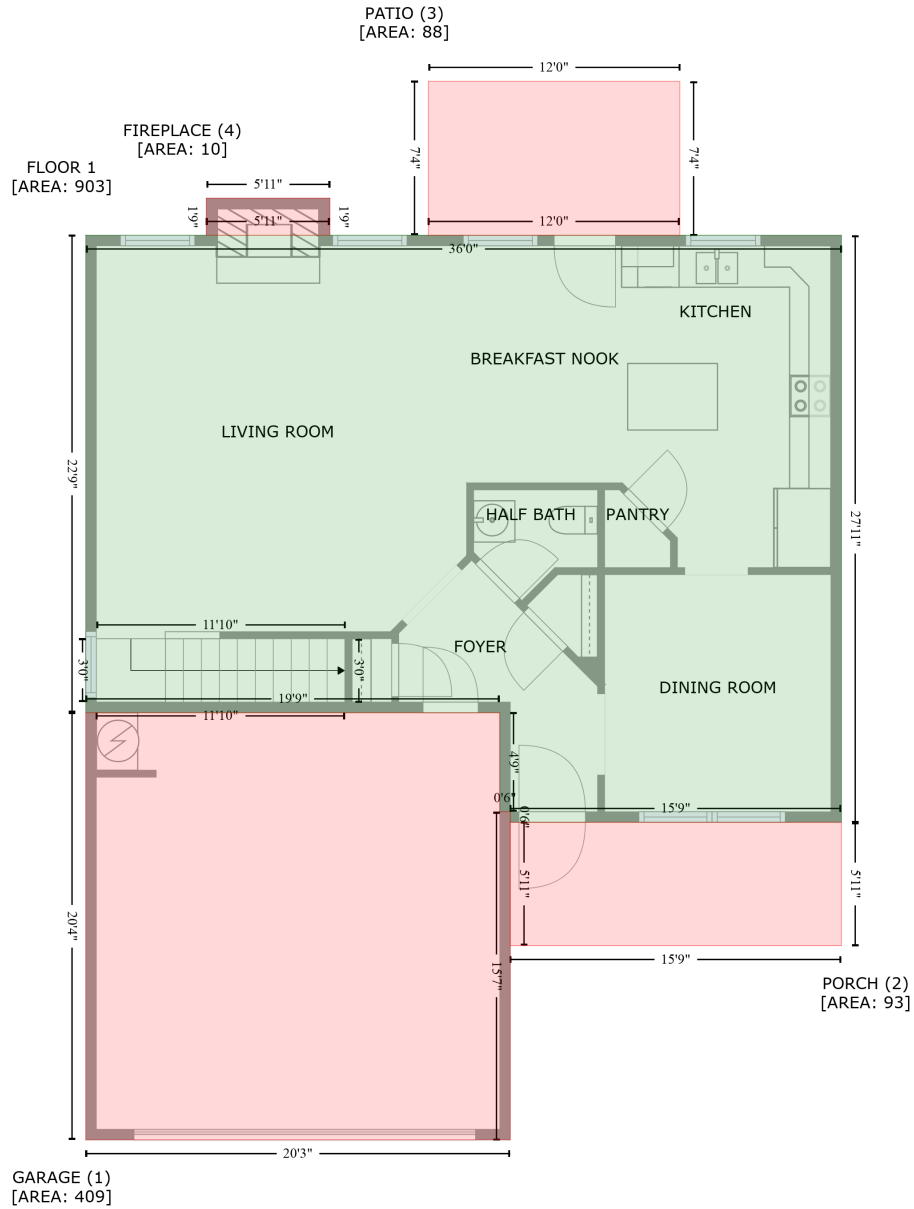


113 Hanover Court, Wilson's Mills, Clayton, Johnston County, North Carolina, United States, 27527

Gross Living Area: 2229 sq. ft



Space	Area (sq. ft)	Calculation <small>Coordinate Polygon Area Algorithm using inches</small>
FLOOR 1 (Living area)	903	$-\left((548.3 + 548.3) * (142.6 - 477.9) + (548.3 + 358.9) * (477.9 - 477.9) + (358.9 + 358.9) * (477.9 - 471.9) + (358.9 + 352.9) * (471.9 - 471.9) + (352.9 + 352.9) * (471.9 - 415.3) + (352.9 + 116.2) * (415.3 - 415.3) + (116.2 + 116.2) * (415.3 - 142.6) + (116.2 + 548.3) * (142.6 - 142.6)\right) * 0.5 * 0.00694$
GARAGE (Non-living area)	409	$-\left((352.9 + 352.9) * (415.3 - 471.9) + (352.9 + 358.9) * (471.9 - 471.9) + (358.9 + 358.9) * (471.9 - 659.3) + (358.9 + 116.2) * (659.3 - 659.3) + (116.2 + 116.2) * (659.3 - 415.3) + (116.2 + 352.9) * (415.3 - 415.3)\right) * 0.5 * 0.00694$

113 Hanover Court, Wilson's Mills, Clayton, Johnston County, North Carolina, United States, 27527

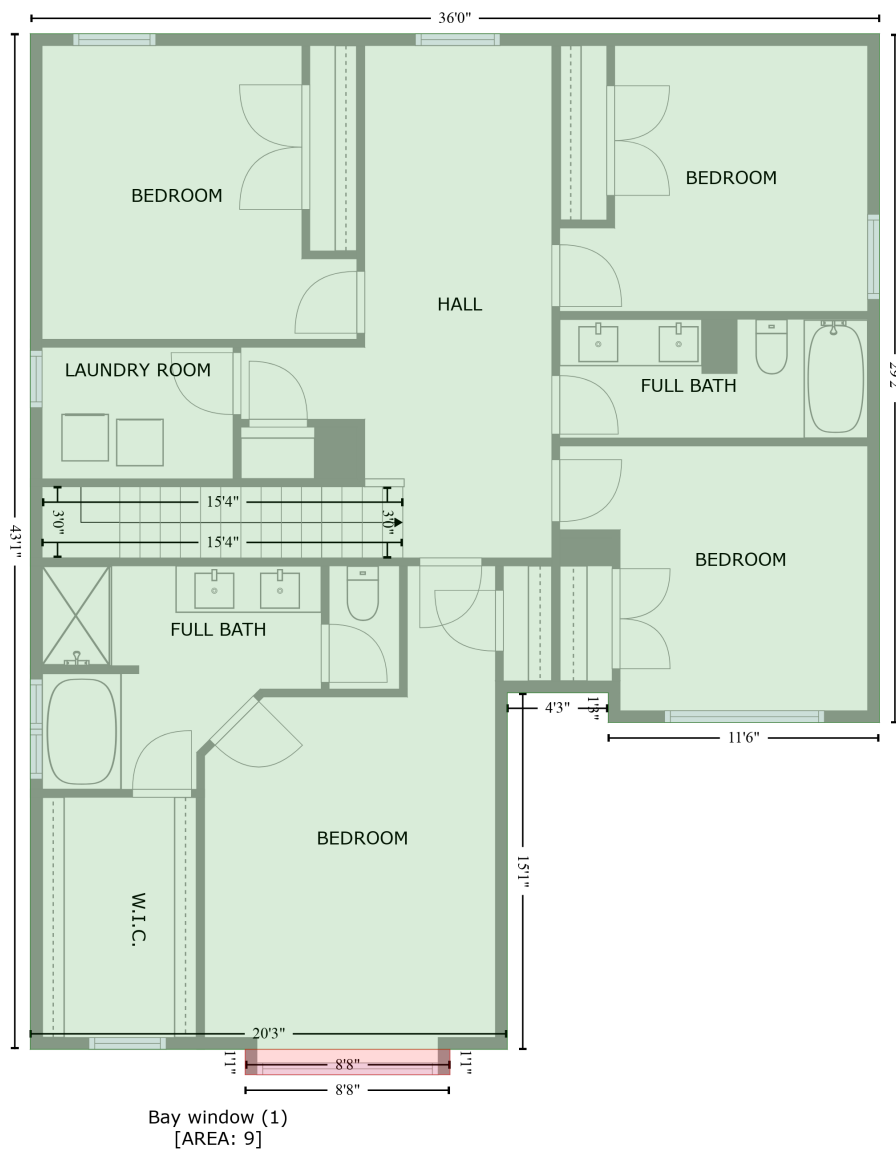
Gross Living Area: 2229 sq. ft

Space	Area (sq. ft)	Calculation <small>Coordinate Polygon Area Algorithm using inches</small>
PORCH (Non-living area)	93	$(415.3 - 415.3) * 0.5 * 0.00694$ $-((548.3 + 548.3) * (477.9 - 548.4) + (548.3 + 358.9) * (548.4 - 548.4) + (358.9 + 358.9) * (548.4 - 477.9) + (358.9 + 548.3) * (477.9 - 477.9)) * 0.5 * 0.00694$
PATIO (Non-living area)	88	$-((455.9 + 455.9) * (54.6 - 142.6) + (455.9 + 312.1) * (142.6 - 142.6) + (312.1 + 312.1) * (142.6 - 54.6) + (312.1 + 455.9) * (54.6 - 54.6)) * 0.5 * 0.00694$
FIREPLACE (Non-living area)	10	$-((255.8 + 255.8) * (121.4 - 142.6) + (255.8 + 185.1) * (142.6 - 142.6) + (185.1 + 185.1) * (142.6 - 121.4) + (185.1 + 255.8) * (121.4 - 121.4)) * 0.5 * 0.00694$

113 Hanover Court, Wilson's Mills, Clayton, Johnston County, North Carolina, United States, 27527

Gross Living Area: 2229 sq. ft

FLOOR 2
[AREA: 1326]



Space	Area (sq. ft)	Calculation <small>Coordinate Polygon Area Algorithm using inches</small>
FLOOR 2 (Living area)	1326	$-((570.3 + 570.3) * (117.7 - 468.1) + (570.3 + 432.3) * (468.1 - 468.1) + (432.3 + 432.3) * (468.1 - 453) + (432.3 + 380.9) * (453 - 453) + (380.9 + 380.9) * (453 - 634.4) + (380.9 + 138.2) * (634.4 - 634.4) + (138.2 + 138.2) * (634.4 - 117.7) + (138.2 + 570.3) * (117.7 - 117.7)) * 0.5 * 0.00694$
Bay window (Non-living area)	9	$-((351.7 + 351.7) * (634.4 - 647.4) + (351.7 + 247.5) * (647.4 - 647.4) + (247.5 + 247.5) * (647.4 - 634.4) + (247.5 + 351.7) * (634.4 - 634.4)) * 0.5 * 0.00694$