

19-19452 Fraser Way

Pitt Meadows BC V3Y 0A3

Main Level Area: 1,281 SQ.FT.

Upper Level Area: 573 SQ.FT.

Total Area 1,854 SQ.FT.

Garage Area: 423 SQ.FT.

3



BEDROOMS

3

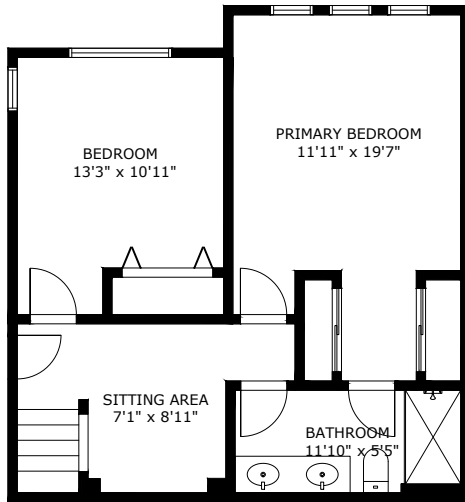


BATHROOMS

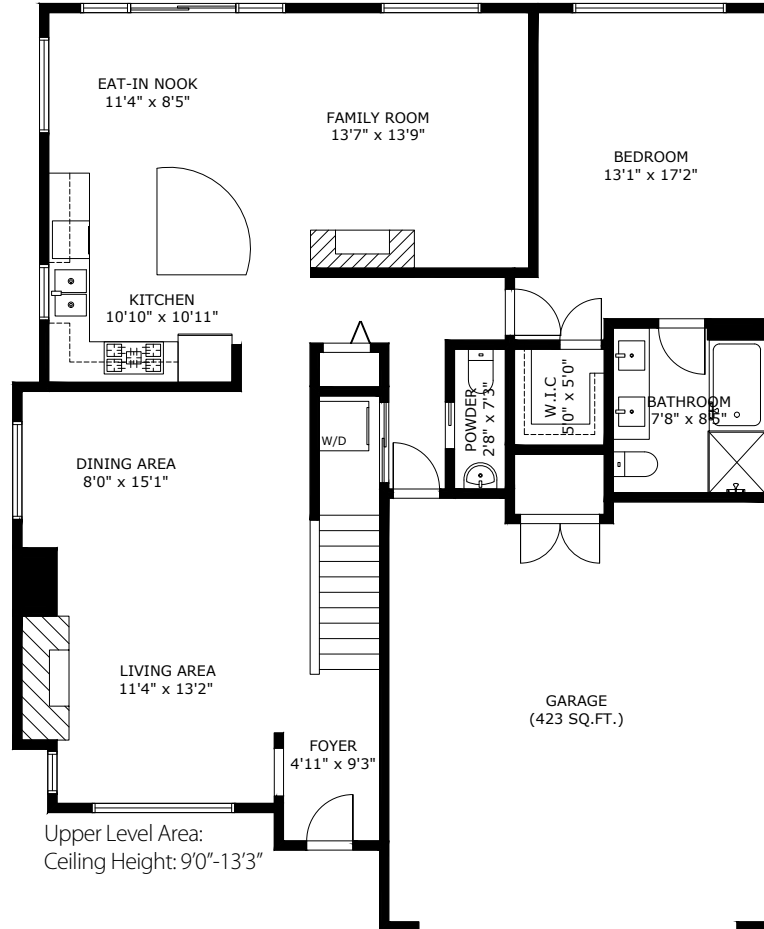
1,854



TOTAL SQ.FT.



Main Level Area:
Ceiling Height: 8'0"



Upper Level Area:
Ceiling Height: 9'0"-13'3"

19-19452 FRASER WAY PITT MEADOWS BC V3Y 0A3

Measurements are approximate and may not be to scale. Gross measurements provided by agent.
The floor plan illustration is not suitable for construction/architectural purposes.
This communication is not intended to cause or induce breach of an existing agency agreement

3D IMMERSIVE
Tours Photos Floor Plans

Professionally measured by 3D Immersive Marketing Ltd.

Lead Floor Planner: *Sara Alexander*
Quality Assurance: *Dianne Graham*