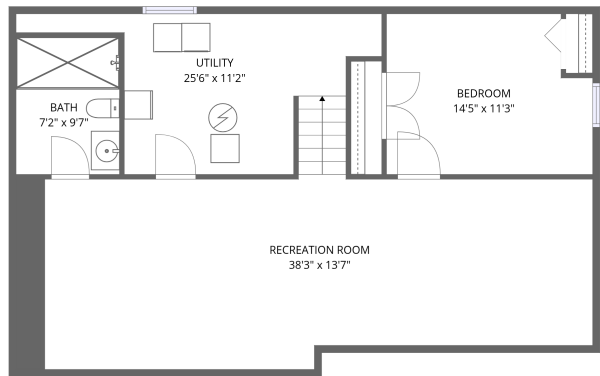
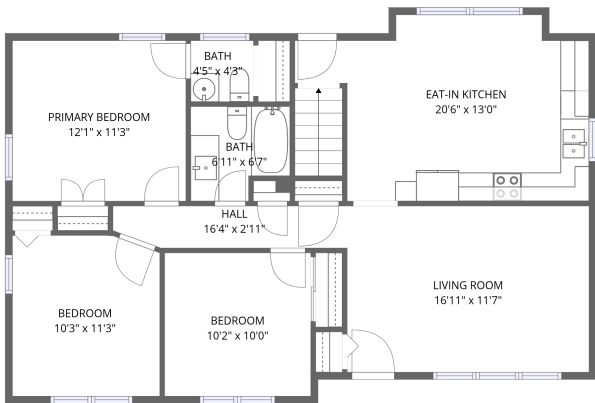


Home data report

8107 Jasmine Ln,Louisville,KY,US



Basement 1



1st floor

**Total Area: 1053 sq. ft**  
Below Ground: 848 sq. ft, 1st Floor: 1053 sq. ft  
Excluded: Utility 185 sq. ft

Property summary

 **2** Floors

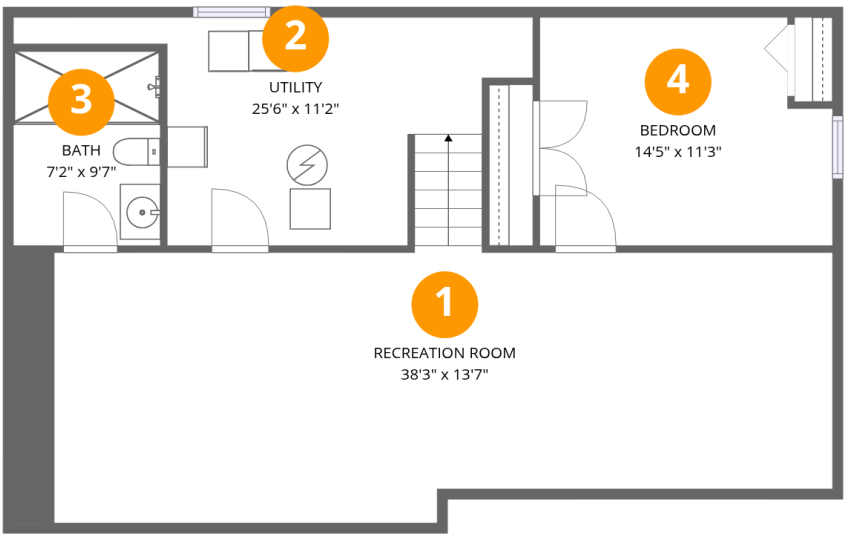
 **4** Bedrooms

 **2** Bathrooms

 **1** Half baths

Home data report

8107 Jasmine Ln,Louisville,KY,US



Room dimensions

Floor 1 Below grade Total:848sqft Excluded: 185sqft

#		Dimensions	sqft	Counted as living area
1	Recreation Room	38'3" x 13'7"	495 sq. ft	Yes
2	Utility	25'6" x 11'2"	171 sq. ft	No
3	Bath	7'2" x 9'7"	69 sq. ft	Yes
4	Bedroom	14'5" x 11'3"	151 sq. ft	Yes

Home data report

8107 Jasmine Ln,Louisville,KY,US

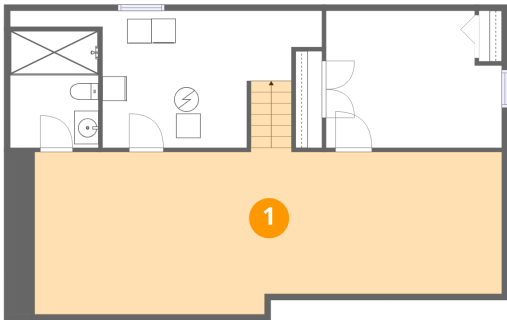


Room dimensions

Floor 2 Total:1053sqft Excluded: 0sqft

#		Dimensions	sqft	Counted as living area
5	Bedroom	10'2" x 10'0"	102 sq. ft	Yes
6	Eat-in Kitchen	20'6" x 13'0"	219 sq. ft	Yes
7	Bath	4'5" x 4'3"	19 sq. ft	Yes
8	Hall	16'4" x 2'11"	46 sq. ft	Yes
9	Bedroom	10'3" x 11'3"	113 sq. ft	Yes
10	Bath	6'11" x 6'7"	41 sq. ft	Yes
11	Living Room	16'11" x 11'7"	196 sq. ft	Yes
12	Primary Bedroom	12'1" x 11'3"	136 sq. ft	Yes

1 Floor 1 - Recreation Room



Dimensions: 38'3" x 13'7"  
Area: 495 sq. ft  
Counted as living area: Yes

Heated: Yes  
Finished: Yes  
Enclosed: Yes  
Contiguous: Yes  
Permitted: Yes  
Wet space: No  
Addition: No  
Conversion: No

2 Floor 1 - Utility



Dimensions: 25'6" x 11'2"  
Area: 171 sq. ft  
Counted as living area: No

Heated: Yes  
Finished: No  
Enclosed: Yes  
Contiguous: Yes  
Permitted: Yes  
Wet space: No  
Addition: No  
Conversion: No

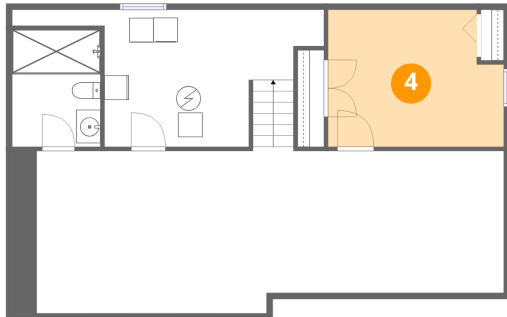
### 3 Floor 1 - Bath



Dimensions: 7'2" x 9'7"  
Area: 69 sq. ft  
Counted as living area: Yes

Heated: Yes  
Finished: Yes  
Enclosed: Yes  
Contiguous: Yes  
Permitted: Yes  
Wet space: Yes  
Addition: No  
Conversion: No

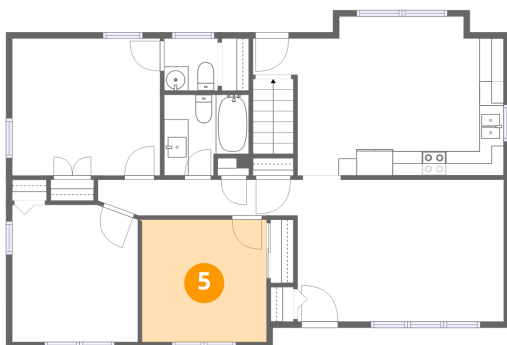
### 4 Floor 1 - Bedroom



Dimensions: 14'5" x 11'3"  
Area: 151 sq. ft  
Counted as living area: Yes

Heated: Yes  
Finished: Yes  
Enclosed: Yes  
Contiguous: Yes  
Permitted: Yes  
Wet space: No  
Addition: No  
Conversion: No

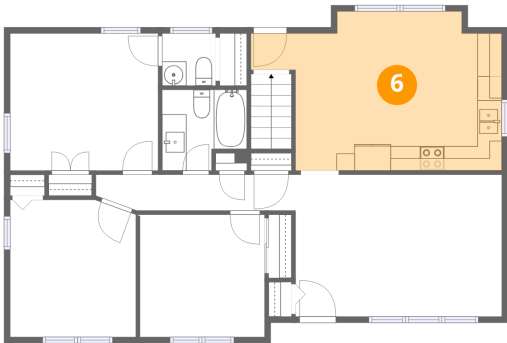
### 5 Floor 2 - Bedroom



Dimensions: 10'2" x 10'0"  
Area: 102 sq. ft  
Counted as living area: Yes

Heated: Yes  
Finished: Yes  
Enclosed: Yes  
Contiguous: Yes  
Permitted: Yes  
Wet space: No  
Addition: No  
Conversion: No

6 Floor 2 - Eat-in Kitchen



Dimensions: 20'6" x 13'0"  
Area: 219 sq. ft  
Counted as living area: Yes

Heated: Yes  
Finished: Yes  
Enclosed: Yes  
Contiguous: Yes  
Permitted: Yes  
Wet space: No  
Addition: No  
Conversion: No

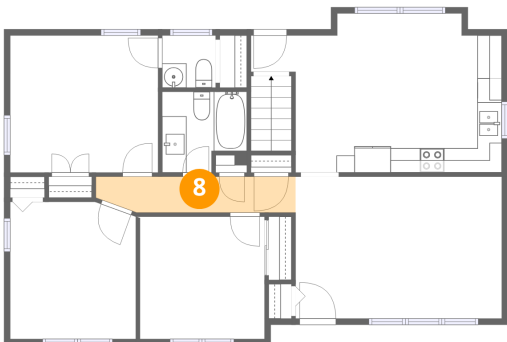
7 Floor 2 - Bath



Dimensions: 4'5" x 4'3"  
Area: 19 sq. ft  
Counted as living area: Yes

Heated: Yes  
Finished: Yes  
Enclosed: Yes  
Contiguous: Yes  
Permitted: Yes  
Wet space: No  
Addition: No  
Conversion: No

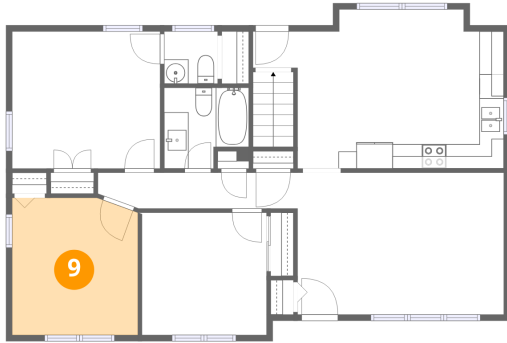
8 Floor 2 - Hall



Dimensions: 16'4" x 2'11"  
Area: 46 sq. ft  
Counted as living area: Yes

Heated: Yes  
Finished: Yes  
Enclosed: Yes  
Contiguous: Yes  
Permitted: Yes  
Wet space: No  
Addition: No  
Conversion: No

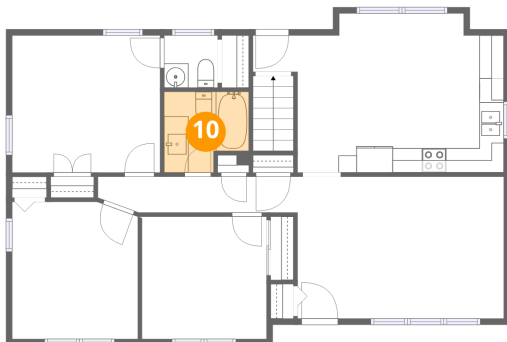
## 9 Floor 2 - Bedroom



Dimensions: 10'3" x 11'3"  
Area: 113 sq. ft  
Counted as living area: Yes

Heated: Yes  
Finished: Yes  
Enclosed: Yes  
Contiguous: Yes  
Permitted: Yes  
Wet space: No  
Addition: No  
Conversion: No

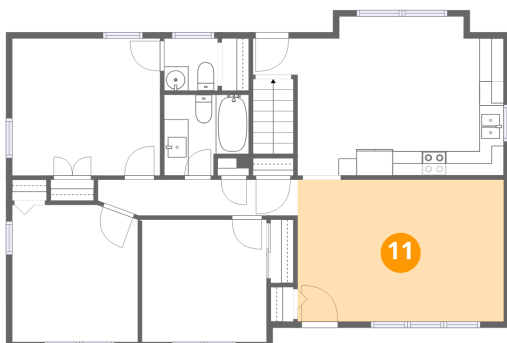
## 10 Floor 2 - Bath



Dimensions: 6'11" x 6'7"  
Area: 41 sq. ft  
Counted as living area: Yes

Heated: Yes  
Finished: Yes  
Enclosed: Yes  
Contiguous: Yes  
Permitted: Yes  
Wet space: Yes  
Addition: No  
Conversion: No

## 11 Floor 2 - Living Room



Dimensions: 16'11" x 11'7"  
Area: 196 sq. ft  
Counted as living area: Yes

Heated: Yes  
Finished: Yes  
Enclosed: Yes  
Contiguous: Yes  
Permitted: Yes  
Wet space: No  
Addition: No  
Conversion: No

12 Floor 2 - Primary Bedroom



Dimensions: 12'1" x 11'3"  
Area: 136 sq. ft  
Counted as living area: Yes

Heated: Yes  
Finished: Yes  
Enclosed: Yes  
Contiguous: Yes  
Permitted: Yes  
Wet space: No  
Addition: No  
Conversion: No