

5742 Crystal Creek Court, Washington Township, Macomb County, Michigan, United States, 48094



Property Summary



2 floors



4 bedrooms



3 bathrooms



5,177 total sqft

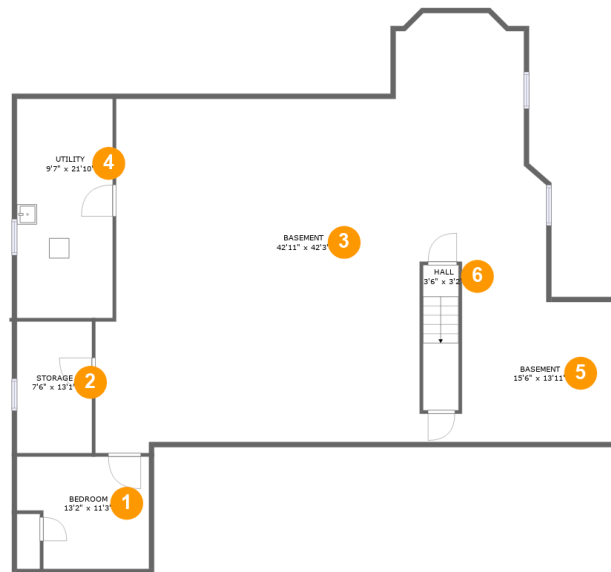


1 garages



2,385 Gross Living Area sqft

5742 Crystal Creek Court, Washington Township, Macomb County, Michigan, United States, 48094

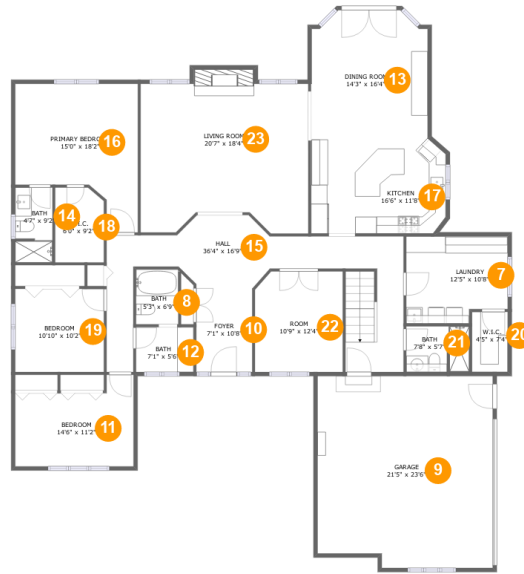


Room Dimensions

Floor 1**Total sqft: 2267****Living area: 0**

#	Room name	Dimensions	Area (sqft)	Counted as Living Area
1	Bedroom	13'2" x 11'3"	132 sq. ft	No
2	Storage	7'6" x 13'1"	98 sq. ft	No
3	Basement	42'11" x 42'3"	1399 sq. ft	Yes
4	Utility	9'7" x 21'10"	208 sq. ft	No
5	Basement	15'6" x 13'11"	216 sq. ft	No
6	Hall	3'6" x 3'2"	51 sq. ft	No

5742 Crystal Creek Court, Washington Township, Macomb County, Michigan, United States, 48094



Room Dimensions

Floor 2

Total sqft: 2910

Living area: 2385

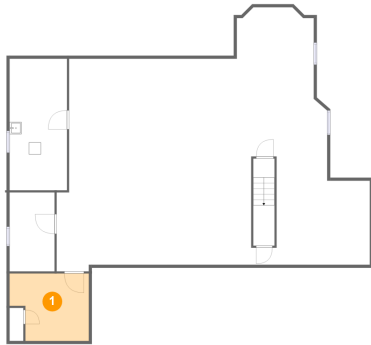
#	Room name	Dimensions	Area (sqft)	Counted as Living Area
7	Laundry	12'5" x 10'8"	124 sq. ft	Yes
8	Bath	5'3" x 6'9"	35 sq. ft	Yes
9	Garage	21'5" x 23'6"	490 sq. ft	No
10	Foyer	7'1" x 10'8"	73 sq. ft	Yes
11	Bedroom	14'6" x 11'2"	137 sq. ft	Yes
12	Bath	7'1" x 5'6"	39 sq. ft	Yes
13	Dining Room	14'3" x 16'4"	224 sq. ft	Yes
14	Bath	4'7" x 9'2"	41 sq. ft	Yes
15	Hall	36'4" x 16'9"	316 sq. ft	Yes
16	Primary Bedroom	15'0" x 18'2"	210 sq. ft	Yes
17	Kitchen	16'6" x 11'8"	179 sq. ft	Yes

**5742 Crystal Creek Court, Washington Township,
Macomb County, Michigan, United States, 48094**

#	Room name	Dimensions	Area (sqft)	Counted as Living Area
18	W.i.c.	6'0" x 9'2"	53 sq. ft	Yes
19	Bedroom	10'10" x 10'2"	111 sq. ft	Yes
20	W.i.c.	4'5" x 7'4"	32 sq. ft	Yes
21	Bath	7'8" x 5'7"	42 sq. ft	Yes
22	Room	10'9" x 12'4"	130 sq. ft	Yes
23	Living Room	20'7" x 18'4"	365 sq. ft	Yes

5742 Crystal Creek Court, Washington Township, Macomb County, Michigan, United States, 48094

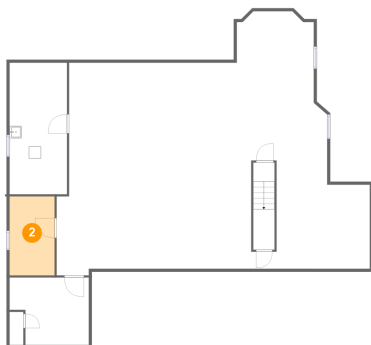
1 Floor 1 - Bedroom



Dimensions: 13'2" x 11'3"
Area: 132 sq. ft
Counted as Living Area: No

Heated: Yes
Finished: Yes
Enclosed: Yes
Contiguous: No
Permitted: Yes
Wet Space: No
Addition: No
Conversion: No

2 Floor 1 - Storage

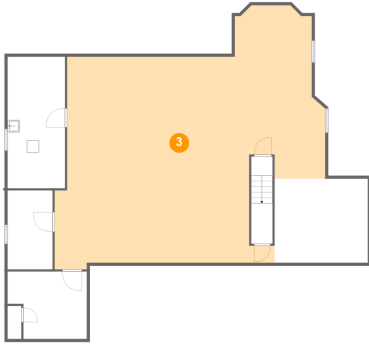


Dimensions: 7'6" x 13'1"
Area: 98 sq. ft
Counted as Living Area: No

Heated: No
Finished: No
Enclosed: No
Contiguous: Yes
Permitted: Yes
Wet Space: No
Addition: No
Conversion: No

5742 Crystal Creek Court, Washington Township, Macomb County, Michigan, United States, 48094

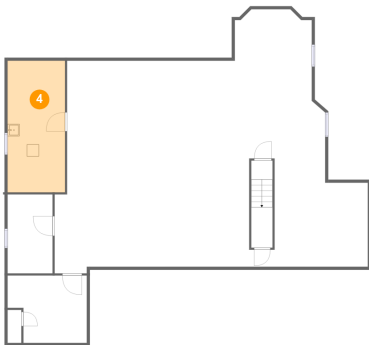
3 Floor 1 - Basement



Dimensions: 42'11" x 42'3"
Area: 1399 sq. ft
Counted as Living Area:
Yes

Heated: No
Finished: Yes
Enclosed: Yes
Contiguous:
Yes
Permitted: Yes
Wet Space: No
Addition: No
Conversion: No

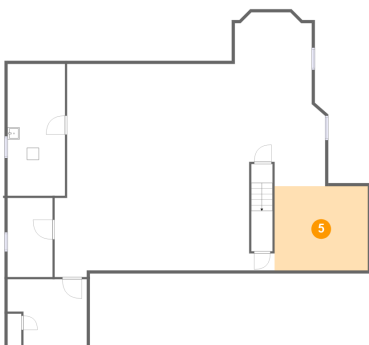
4 Floor 1 - Utility



Dimensions: 9'7" x 21'10"
Area: 208 sq. ft
Counted as Living Area: No

Heated: Yes
Finished: No
Enclosed: Yes
Contiguous: Yes
Permitted: Yes
Wet Space: No
Addition: No
Conversion: No

5 Floor 1 - Basement

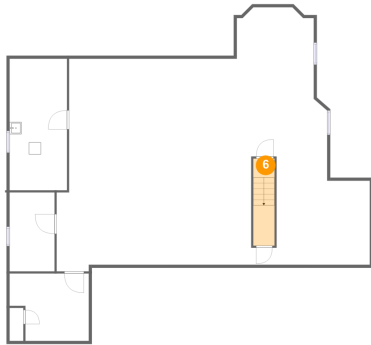


Dimensions: 15'6" x 13'11"
Area: 216 sq. ft
Counted as Living Area: No

Heated: No
Finished: Yes
Enclosed: Yes
Contiguous: Yes
Permitted: Yes
Wet Space: No
Addition: No
Conversion: No

5742 Crystal Creek Court, Washington Township, Macomb County, Michigan, United States, 48094

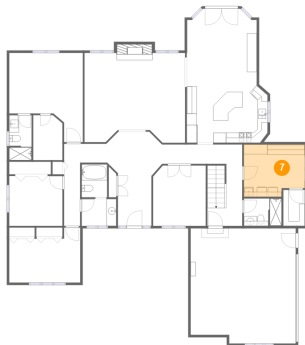
6 Floor 1 - Hall



Dimensions: 3'6" x 3'2"
Area: 51 sq. ft
Counted as Living Area: No

Heated: Yes
Finished: Yes
Enclosed: Yes
Contiguous: No
Permitted: Yes
Wet Space: No
Addition: No
Conversion: No

7 Floor 2 - Laundry



Dimensions: 12'5" x 10'8"
Area: 124 sq. ft
Counted as Living Area:
Yes

Heated: Yes
Finished: Yes
Enclosed: Yes
Contiguous:
Yes
Permitted: Yes
Wet Space: No
Addition: No
Conversion: No

8 Floor 2 - Bath

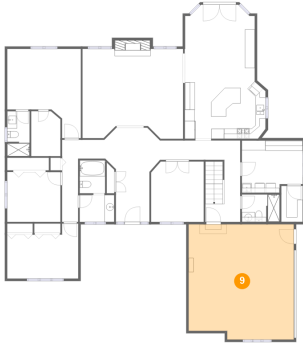


Dimensions: 5'3" x 6'9"
Area: 35 sq. ft
Counted as Living Area:
Yes

Heated: Yes
Finished: Yes
Enclosed: Yes
Contiguous:
Yes
Permitted: Yes
Wet Space: Yes
Addition: No
Conversion: No

5742 Crystal Creek Court, Washington Township, Macomb County, Michigan, United States, 48094

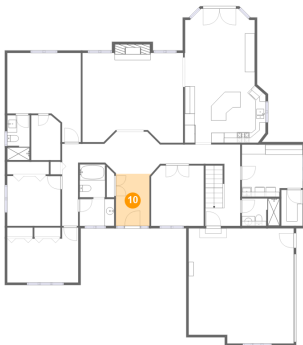
9 Floor 2 - Garage



Dimensions: 21'5" x 23'6"
Area: 490 sq. ft
Counted as Living Area: No

Heated: No
Finished: No
Enclosed: Yes
Contiguous: Yes
Permitted: Yes
Wet Space: No
Addition: No
Conversion: No

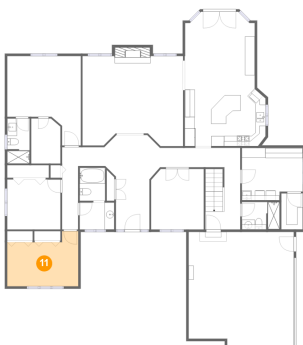
10 Floor 2 - Foyer



Dimensions: 7'1" x 10'8"
Area: 73 sq. ft
Counted as Living Area:
Yes

Heated: Yes
Finished: Yes
Enclosed: Yes
Contiguous:
Yes
Permitted: Yes
Wet Space: No
Addition: No
Conversion: No

11 Floor 2 - Bedroom



Dimensions: 14'6" x 11'2"
Area: 137 sq. ft
Counted as Living Area:
Yes

Heated: Yes
Finished: Yes
Enclosed: Yes
Contiguous:
Yes
Permitted: Yes
Wet Space: No
Addition: No
Conversion: No

5742 Crystal Creek Court, Washington Township, Macomb County, Michigan, United States, 48094

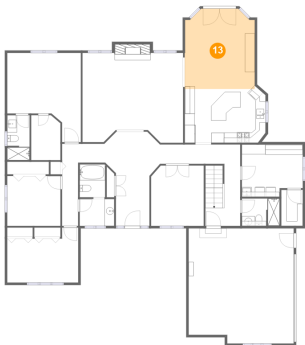
12 Floor 2 - Bath



Dimensions: 7'1" x 5'6"
Area: 39 sq. ft
Counted as Living Area:
Yes

Heated: Yes
Finished: Yes
Enclosed: Yes
Contiguous:
Yes
Permitted: Yes
Wet Space: Yes
Addition: No
Conversion: No

13 Floor 2 - Dining Room



Dimensions: 14'3" x 16'4"
Area: 224 sq. ft
Counted as Living Area:
Yes

Heated: Yes
Finished: Yes
Enclosed: Yes
Contiguous:
Yes
Permitted: Yes
Wet Space: No
Addition: No
Conversion: No

14 Floor 2 - Bath

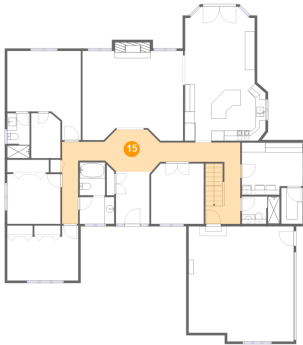


Dimensions: 4'7" x 9'2"
Area: 41 sq. ft
Counted as Living Area:
Yes

Heated: Yes
Finished: Yes
Enclosed: Yes
Contiguous:
Yes
Permitted: Yes
Wet Space: Yes
Addition: No
Conversion: No

5742 Crystal Creek Court, Washington Township, Macomb County, Michigan, United States, 48094

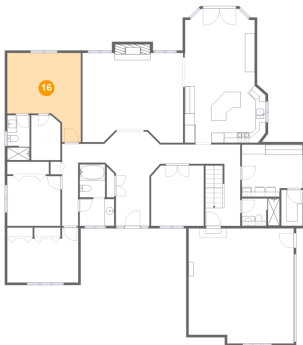
15 Floor 2 - Hall



Dimensions: 36'4" x 16'9"
Area: 316 sq. ft
Counted as Living Area:
Yes

Heated: Yes
Finished: Yes
Enclosed: Yes
Contiguous:
Yes
Permitted: Yes
Wet Space: No
Addition: No
Conversion: No

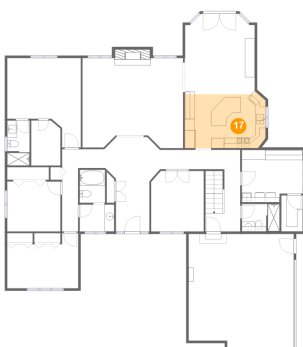
16 Floor 2 - Primary Bedroom



Dimensions: 15'0" x 18'2"
Area: 210 sq. ft
Counted as Living Area:
Yes

Heated: Yes
Finished: Yes
Enclosed: Yes
Contiguous:
Yes
Permitted: Yes
Wet Space: No
Addition: No
Conversion: No

17 Floor 2 - Kitchen



Dimensions: 16'6" x 11'8"
Area: 179 sq. ft
Counted as Living Area:
Yes

Heated: Yes
Finished: Yes
Enclosed: Yes
Contiguous:
Yes
Permitted: Yes
Wet Space: No
Addition: No
Conversion: No

5742 Crystal Creek Court, Washington Township, Macomb County, Michigan, United States, 48094

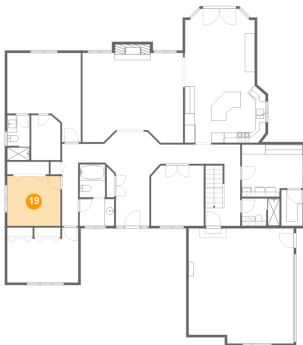
18 Floor 2 - W.i.c.



Dimensions: 6'0" x 9'2"
Area: 53 sq. ft
Counted as Living Area:
Yes

Heated: Yes
Finished: Yes
Enclosed: Yes
Contiguous:
Yes
Permitted: Yes
Wet Space: No
Addition: No
Conversion: No

19 Floor 2 - Bedroom



Dimensions: 10'10" x 10'2"
Area: 111 sq. ft
Counted as Living Area:
Yes

Heated: Yes
Finished: Yes
Enclosed: Yes
Contiguous:
Yes
Permitted: Yes
Wet Space: No
Addition: No
Conversion: No

20 Floor 2 - W.i.c.



Dimensions: 4'5" x 7'4"
Area: 32 sq. ft
Counted as Living Area:
Yes

Heated: Yes
Finished: Yes
Enclosed: Yes
Contiguous:
Yes
Permitted: Yes
Wet Space: No
Addition: No
Conversion: No

5742 Crystal Creek Court, Washington Township, Macomb County, Michigan, United States, 48094

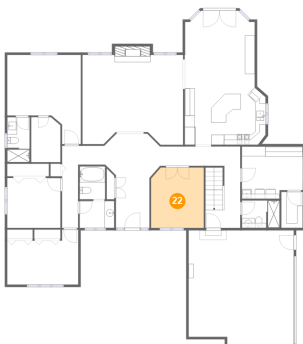
21 Floor 2 - Bath



Dimensions: 7'8" x 5'7"
Area: 42 sq. ft
Counted as Living Area:
Yes

Heated: Yes
Finished: Yes
Enclosed: Yes
Contiguous:
Yes
Permitted: Yes
Wet Space: Yes
Addition: No
Conversion: No

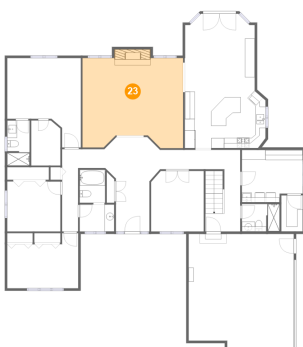
22 Floor 2 - Room



Dimensions: 10'9" x 12'4"
Area: 130 sq. ft
Counted as Living Area:
Yes

Heated: Yes
Finished: Yes
Enclosed: Yes
Contiguous:
Yes
Permitted: Yes
Wet Space: No
Addition: No
Conversion: No

23 Floor 2 - Living Room



Dimensions: 20'7" x 18'4"
Area: 365 sq. ft
Counted as Living Area:
Yes

Heated: Yes
Finished: Yes
Enclosed: Yes
Contiguous:
Yes
Permitted: Yes
Wet Space: No
Addition: No
Conversion: No