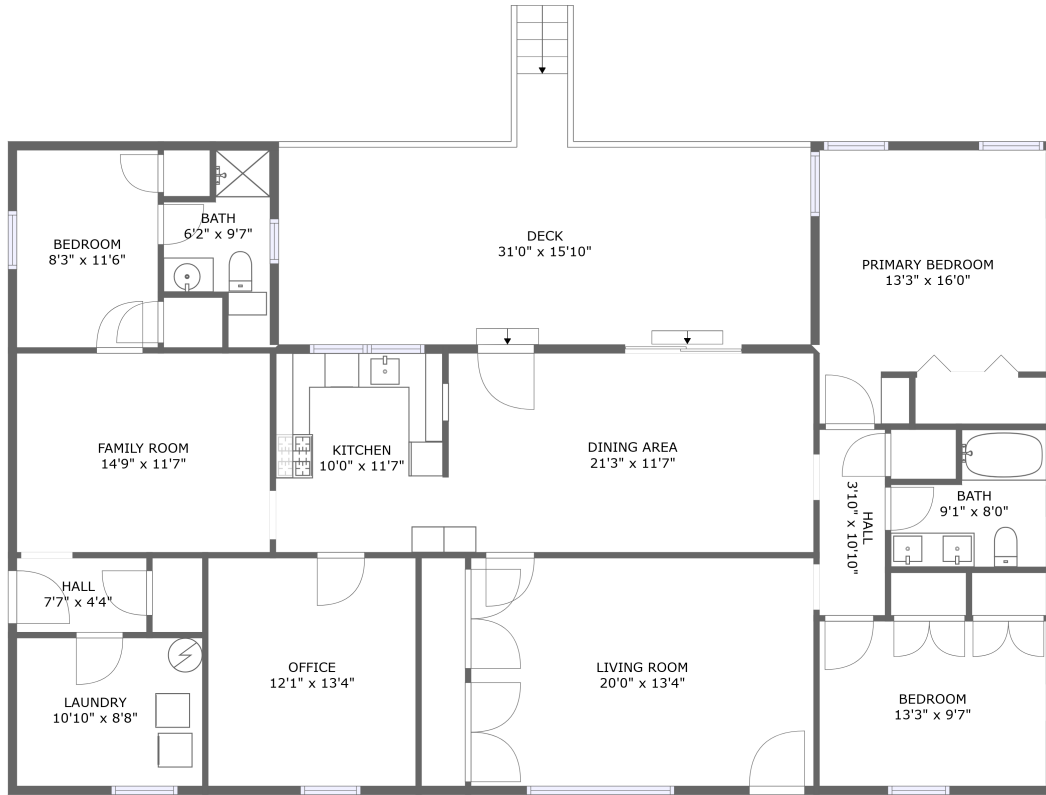


1204 Jordan Avenue, Lufkin, Angelina County, Texas, United States, 75904



FLOOR 1

Property Summary

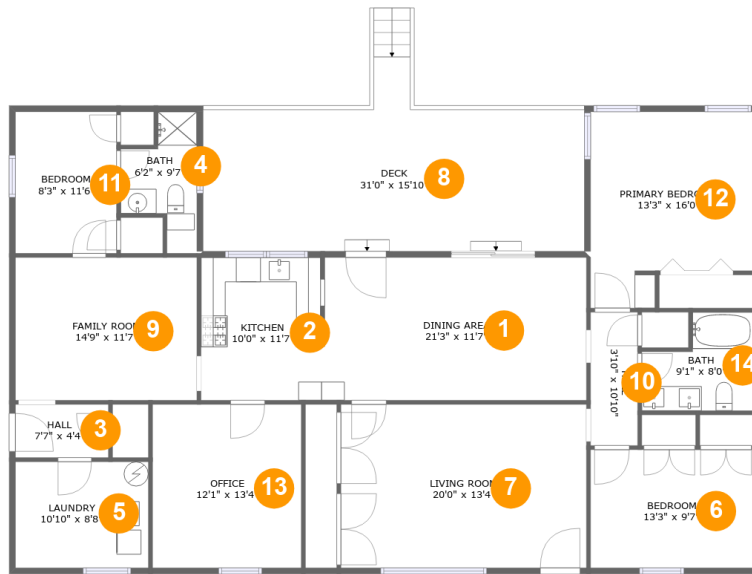
0 garages **3** bedrooms **2** bathrooms **0** half baths

1 floors

1,956 Gross Living Area sqft

2,326 total sqft

1204 Jordan Avenue, Lufkin, Angelina County, Texas, United States, 75904



Room Dimensions

Floor 1

Total sqft: 2326

Living area: 1956

#	Room name	Dimensions	Area (sqft)	Counted as Living Area
1	Dining Area	21'3" x 11'7"	247 sq. ft	Yes
2	Kitchen	10'0" x 11'7"	115 sq. ft	Yes
3	Hall	7'7" x 4'4"	33 sq. ft	Yes
4	Bath	6'2" x 9'7"	50 sq. ft	Yes
5	Laundry	10'10" x 8'8"	93 sq. ft	Yes
6	Bedroom	13'3" x 9'7"	127 sq. ft	Yes
7	Living Room	20'0" x 13'4"	266 sq. ft	Yes
8	Deck	31'0" x 15'10"	370 sq. ft	No
9	Family Room	14'9" x 11'7"	171 sq. ft	Yes
10	Hall	3'10" x 10'10"	42 sq. ft	Yes
11	Bedroom	8'3" x 11'6"	95 sq. ft	Yes

**1204 Jordan Avenue, Lufkin, Angelina County,
Texas, United States, 75904**

#	Room name	Dimensions	Area (sqft)	Counted as Living Area
12	Primary Bedroom	13'3" x 16'0"	186 sq. ft	Yes
13	Office	12'1" x 13'4"	161 sq. ft	Yes
14	Bath	9'1" x 8'0"	59 sq. ft	Yes

1204 Jordan Avenue, Lufkin, Angelina County, Texas, United States, 75904

1 Floor 1 - Dining Area



Dimensions: 21'3" x 11'7"
Area: 247 sq. ft
Counted as Living Area:
Yes

Heated: Yes
Finished: Yes
Enclosed: Yes
Contiguous:
Yes
Permitted: Yes
Wet Space: No
Addition: No
Conversion: No

2 Floor 1 - Kitchen



Dimensions: 10'0" x 11'7"
Area: 115 sq. ft
Counted as Living Area:
Yes

Heated: Yes
Finished: Yes
Enclosed: Yes
Contiguous:
Yes
Permitted: Yes
Wet Space: No
Addition: No
Conversion: No

1204 Jordan Avenue, Lufkin, Angelina County, Texas, United States, 75904

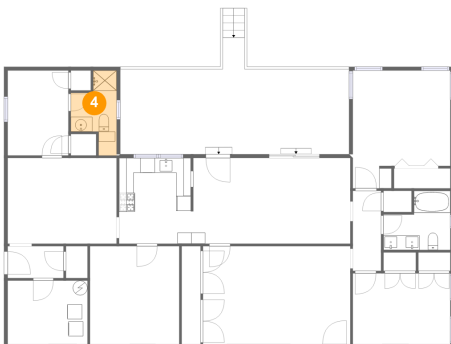
3 Floor 1 - Hall



Dimensions: 7'7" x 4'4"
Area: 33 sq. ft
Counted as Living Area:
Yes

Heated: Yes
Finished: Yes
Enclosed: Yes
Contiguous:
Yes
Permitted: Yes
Wet Space: No
Addition: No
Conversion: No

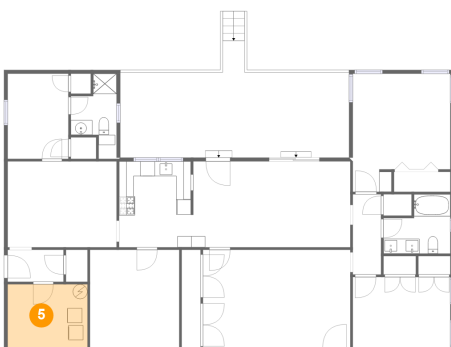
4 Floor 1 - Bath



Dimensions: 6'2" x 9'7"
Area: 50 sq. ft
Counted as Living Area:
Yes

Heated: Yes
Finished: Yes
Enclosed: Yes
Contiguous:
Yes
Permitted: Yes
Wet Space: Yes
Addition: No
Conversion: No

5 Floor 1 - Laundry



Dimensions: 10'10" x 8'8"
Area: 93 sq. ft
Counted as Living Area:
Yes

Heated: Yes
Finished: Yes
Enclosed: Yes
Contiguous:
Yes
Permitted: Yes
Wet Space: No
Addition: No
Conversion: No

1204 Jordan Avenue, Lufkin, Angelina County, Texas, United States, 75904

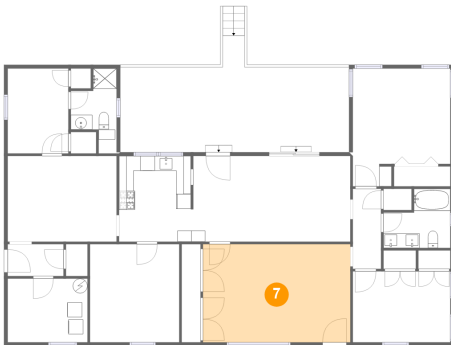
6 Floor 1 - Bedroom



Dimensions: 13'3" x 9'7"
Area: 127 sq. ft
Counted as Living Area:
Yes

Heated: Yes
Finished: Yes
Enclosed: Yes
Contiguous:
Yes
Permitted: Yes
Wet Space: No
Addition: No
Conversion: No

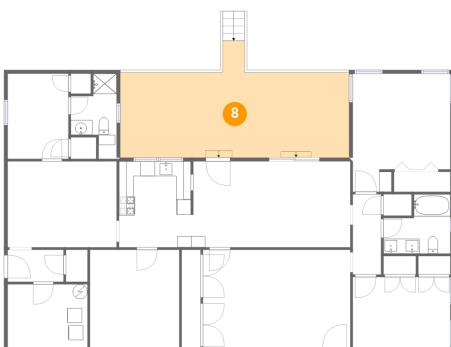
7 Floor 1 - Living Room



Dimensions: 20'0" x 13'4"
Area: 266 sq. ft
Counted as Living Area:
Yes

Heated: Yes
Finished: Yes
Enclosed: Yes
Contiguous:
Yes
Permitted: Yes
Wet Space: No
Addition: No
Conversion: No

8 Floor 1 - Deck



Dimensions: 31'0" x 15'10"
Area: 370 sq. ft
Counted as Living Area: No

Heated: No
Finished: Yes
Enclosed: No
Contiguous: Yes
Permitted: Yes
Wet Space: No
Addition: No
Conversion: No

1204 Jordan Avenue, Lufkin, Angelina County, Texas, United States, 75904

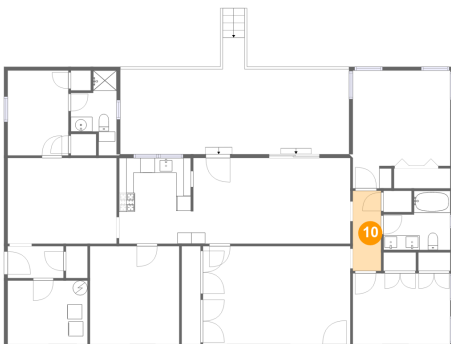
9 Floor 1 - Family Room



Dimensions: 14'9" x 11'7"
Area: 171 sq. ft
Counted as Living Area:
Yes

Heated: Yes
Finished: Yes
Enclosed: Yes
Contiguous:
Yes
Permitted: Yes
Wet Space: No
Addition: No
Conversion: No

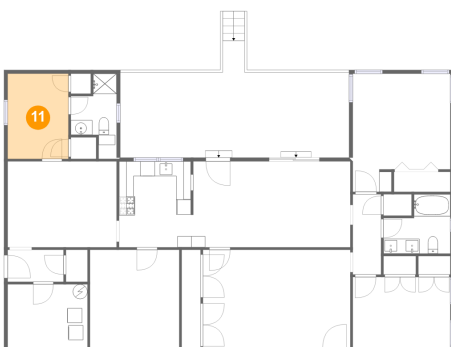
10 Floor 1 - Hall



Dimensions: 3'10" x 10'10"
Area: 42 sq. ft
Counted as Living Area:
Yes

Heated: Yes
Finished: Yes
Enclosed: Yes
Contiguous:
Yes
Permitted: Yes
Wet Space: No
Addition: No
Conversion: No

11 Floor 1 - Bedroom

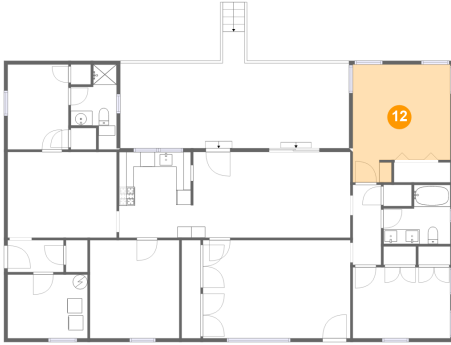


Dimensions: 8'3" x 11'6"
Area: 95 sq. ft
Counted as Living Area:
Yes

Heated: Yes
Finished: Yes
Enclosed: Yes
Contiguous:
Yes
Permitted: Yes
Wet Space: No
Addition: No
Conversion: No

1204 Jordan Avenue, Lufkin, Angelina County, Texas, United States, 75904

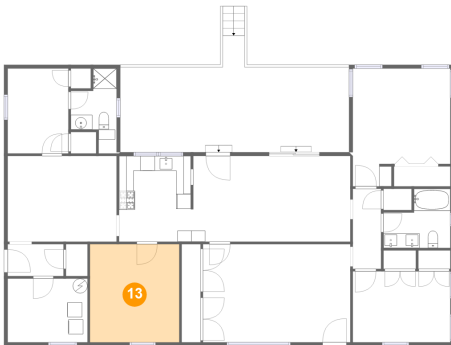
12 Floor 1 - Primary Bedroom



Dimensions: 13'3" x 16'0"
Area: 186 sq. ft
Counted as Living Area:
Yes

Heated: Yes
Finished: Yes
Enclosed: Yes
Contiguous:
Yes
Permitted: Yes
Wet Space: No
Addition: No
Conversion: No

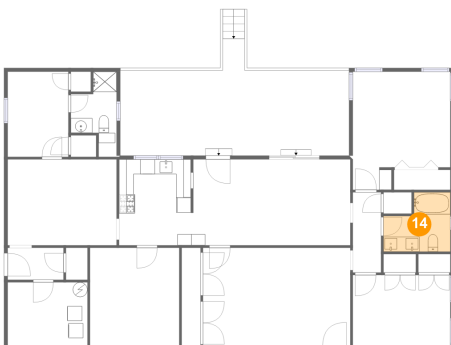
13 Floor 1 - Office



Dimensions: 12'1" x 13'4"
Area: 161 sq. ft
Counted as Living Area:
Yes

Heated: Yes
Finished: Yes
Enclosed: Yes
Contiguous:
Yes
Permitted: Yes
Wet Space: No
Addition: No
Conversion: No

14 Floor 1 - Bath



Dimensions: 9'1" x 8'0"
Area: 59 sq. ft
Counted as Living Area:
Yes

Heated: Yes
Finished: Yes
Enclosed: Yes
Contiguous:
Yes
Permitted: Yes
Wet Space: Yes
Addition: No
Conversion: No