

Home report

192 Twin Cove Drive, Westlake Corner, Moneta, Franklin County,  
Virginia, United States, 24121



**Total Area: 1868 sq. ft**

Floor 1: 894 sq. ft, Floor 2: 974 sq. ft

Excluded: Screened porch 226 sq. ft, Fireplace 7 sq. ft, Garage 464 sq. ft, Deck 413 sq. ft, Porch 86 sq. ft, Walls: 181 sq. ft

Property summary

**2**  
Floors

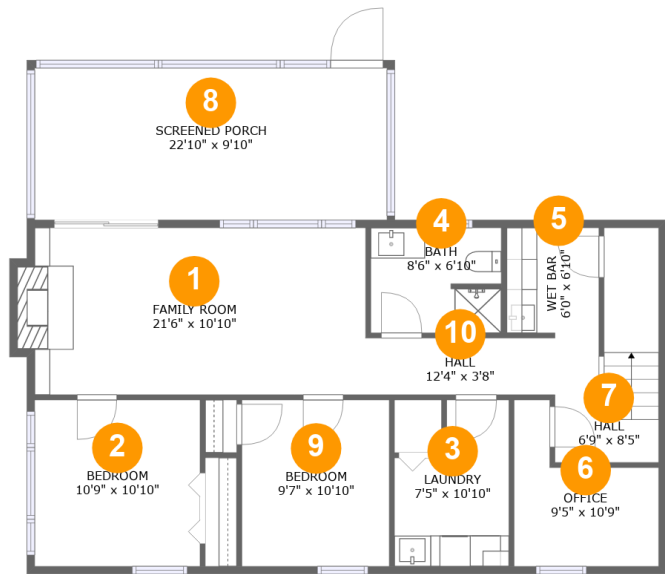
**4**  
Bedrooms

**2**  
Bathrooms

**1**  
Garages

Home report

192 Twin Cove Drive, Westlake Corner, Moneta, Franklin County,  
Virginia, United States, 24121



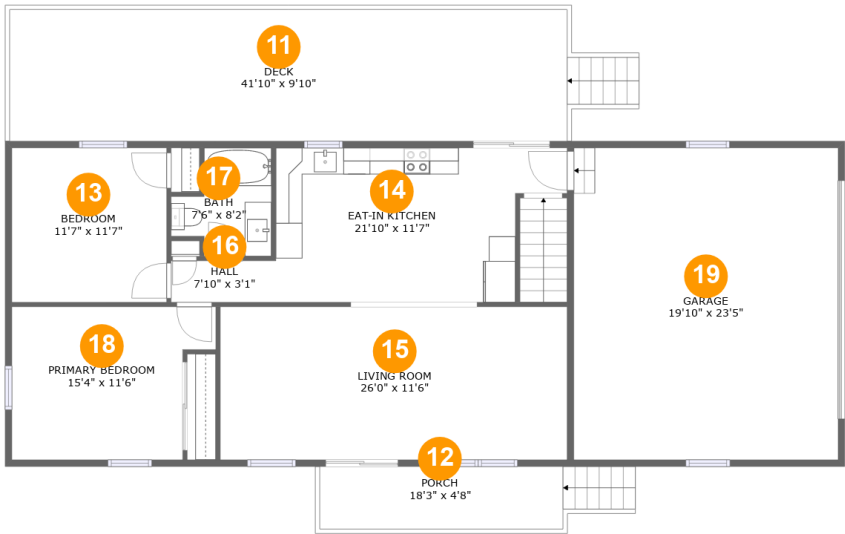
Room dimensions

Floor 1 Total:894sqft    Excluded: 233sqft

#		Max Dimensions	sqft	Included
1	Family Room	21'6" x 10'10"	239 sq. ft	Yes
2	Bedroom	10'9" x 10'10"	116 sq. ft	Yes
3	Laundry	7'5" x 10'10"	68 sq. ft	Yes
4	Bath	8'6" x 6'10"	57 sq. ft	Yes
5	Wet Bar	6'0" x 6'10"	41 sq. ft	Yes
6	Office	9'5" x 10'9"	70 sq. ft	Yes
7	Hall	6'9" x 8'5"	80 sq. ft	Yes
8	Screened Porch	22'10" x 9'10"	226 sq. ft	No
9	Bedroom	9'7" x 10'10"	103 sq. ft	Yes
10	Hall	12'4" x 3'8"	45 sq. ft	Yes

Home report

192 Twin Cove Drive, Westlake Corner, Moneta, Franklin County,  
Virginia, United States, 24121

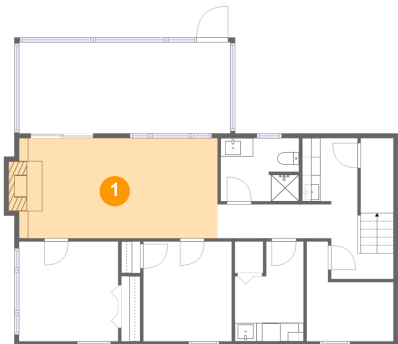


Room dimensions

Floor 2 Total:974sqft    Excluded: 963sqft

#		Max Dimensions	sqft	Included
11	Deck	41'10" x 9'10"	413 sq. ft	No
12	Porch	18'3" x 4'8"	86 sq. ft	No
13	Bedroom	11'7" x 11'7"	135 sq. ft	Yes
14	Eat-in Kitchen	21'10" x 11'7"	221 sq. ft	Yes
15	Living Room	26'0" x 11'6"	299 sq. ft	Yes
16	Hall	7'10" x 3'1"	24 sq. ft	Yes
17	Bath	7'6" x 8'2"	48 sq. ft	Yes
18	Primary Bedroom	15'4" x 11'6"	155 sq. ft	Yes
19	Garage	19'10" x 23'5"	464 sq. ft	No

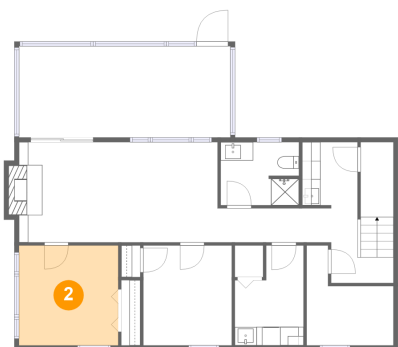
1 Floor 1 - Family Room



Max Dimensions: 21'6" x 10'10"  
Calculated Area: 239 sq. ft  
Included: Yes

Heated: Yes  
Finished: Yes  
Enclosed: Yes  
Contiguous: Yes  
Permitted: Yes  
Wet space: No  
Addition: No  
Conversion: No

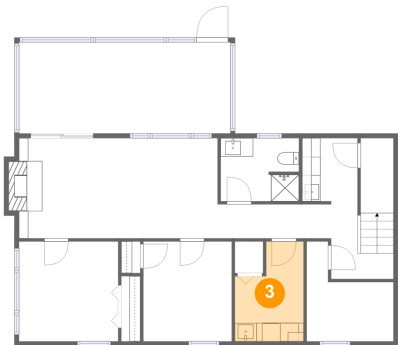
2 Floor 1 - Bedroom



Max Dimensions: 10'9" x 10'10"  
Calculated Area: 116 sq. ft  
Included: Yes

Heated: Yes  
Finished: Yes  
Enclosed: Yes  
Contiguous: Yes  
Permitted: Yes  
Wet space: No  
Addition: No  
Conversion: No

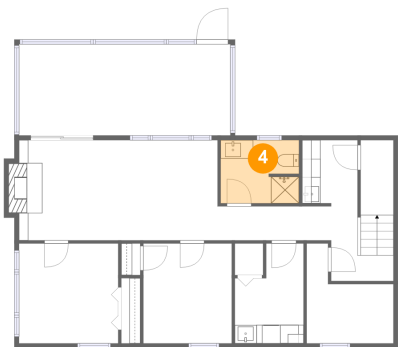
3 Floor 1 - Laundry



Max Dimensions: 7'5" x 10'10"  
Calculated Area: 68 sq. ft  
Included: Yes

Heated: Yes  
Finished: Yes  
Enclosed: Yes  
Contiguous: Yes  
Permitted: Yes  
Wet space: No  
Addition: No  
Conversion: No

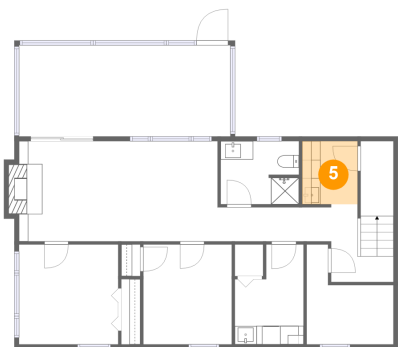
4 Floor 1 - Bath



Max Dimensions: 8'6" x 6'10"  
Calculated Area: 57 sq. ft  
Included: Yes

Heated: Yes  
Finished: Yes  
Enclosed: Yes  
Contiguous: Yes  
Permitted: Yes  
Wet space: Yes  
Addition: No  
Conversion: No

5 Floor 1 - Wet Bar

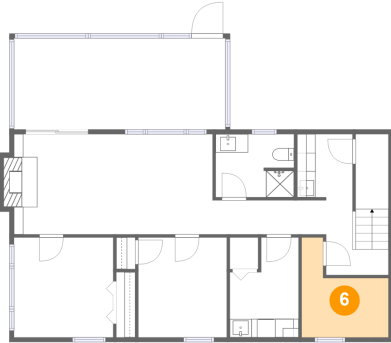


Max Dimensions: 6'0" x 6'10"  
Calculated Area: 41 sq. ft  
Included: Yes

Heated: Yes  
Finished: Yes  
Enclosed: Yes  
Contiguous: Yes  
Permitted: Yes  
Wet space: No  
Addition: No  
Conversion: No

192 Twin Cove Drive, Westlake Corner, Moneta, Franklin County,  
Virginia, United States, 24121

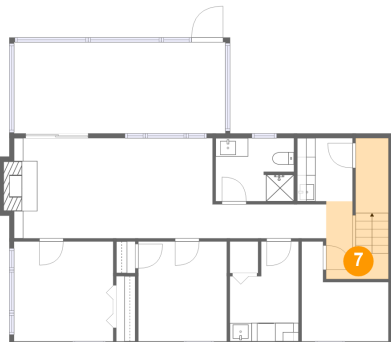
## 6 Floor 1 - Office



Max Dimensions: 9'5" x 10'9"  
Calculated Area: 70 sq. ft  
Included: Yes

Heated: Yes  
Finished: Yes  
Enclosed: Yes  
Contiguous: Yes  
Permitted: Yes  
Wet space: No  
Addition: No  
Conversion: No

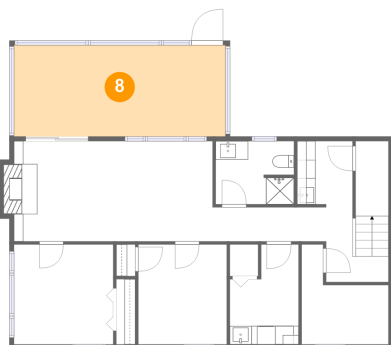
## 7 Floor 1 - Hall



Max Dimensions: 6'9" x 8'5"  
Calculated Area: 80 sq. ft  
Included: Yes

Heated: Yes  
Finished: Yes  
Enclosed: Yes  
Contiguous: Yes  
Permitted: Yes  
Wet space: No  
Addition: No  
Conversion: No

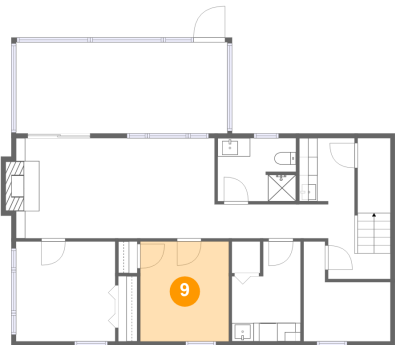
## 8 Floor 1 - Screened Porch



Max Dimensions: 22'10" x 9'10"  
Calculated Area: 226 sq. ft  
Included: No

Heated: No  
Finished: Yes  
Enclosed: No  
Contiguous: Yes  
Permitted: Yes  
Wet space: No  
Addition: No  
Conversion: No

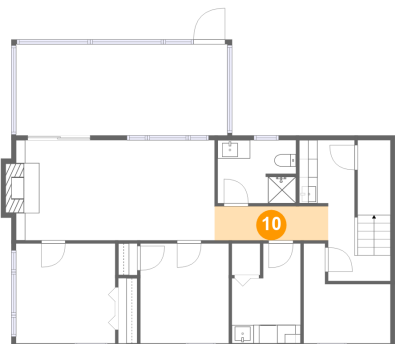
9 Floor 1 - Bedroom



Max Dimensions: 9'7" x 10'10"  
Calculated Area: 103 sq. ft  
Included: Yes

Heated: Yes  
Finished: Yes  
Enclosed: Yes  
Contiguous: Yes  
Permitted: Yes  
Wet space: No  
Addition: No  
Conversion: No

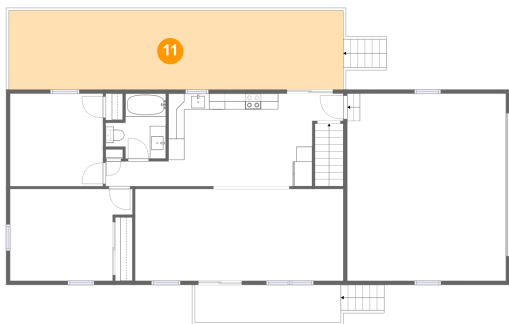
10 Floor 1 - Hall



Max Dimensions: 12'4" x 3'8"  
Calculated Area: 45 sq. ft  
Included: Yes

Heated: Yes  
Finished: Yes  
Enclosed: Yes  
Contiguous: Yes  
Permitted: Yes  
Wet space: No  
Addition: No  
Conversion: No

11 Floor 2 - Deck



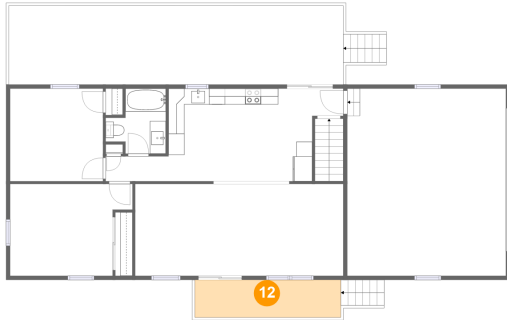
Max Dimensions: 41'10" x 9'10"  
Calculated Area: 413 sq. ft  
Included: No

Heated: No  
Finished: Yes  
Enclosed: No  
Contiguous: Yes  
Permitted: Yes  
Wet space: No  
Addition: No  
Conversion: No

## Home report

192 Twin Cove Drive, Westlake Corner, Moneta, Franklin County,  
Virginia, United States, 24121

### 12 Floor 2 - Porch



Max Dimensions: 18'3" x 4'8"  
Calculated Area: 86 sq. ft  
Included: No

Heated: No  
Finished: Yes  
Enclosed: No  
Contiguous: No  
Permitted: Yes  
Wet space: No  
Addition: No  
Conversion: No

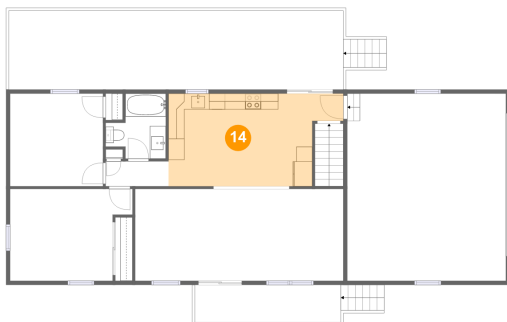
### 13 Floor 2 - Bedroom



Max Dimensions: 11'7" x 11'7"  
Calculated Area: 135 sq. ft  
Included: Yes

Heated: Yes  
Finished: Yes  
Enclosed: Yes  
Contiguous: Yes  
Permitted: Yes  
Wet space: No  
Addition: No  
Conversion: No

### 14 Floor 2 - Eat-in Kitchen



Max Dimensions: 21'10" x 11'7"  
Calculated Area: 221 sq. ft  
Included: Yes

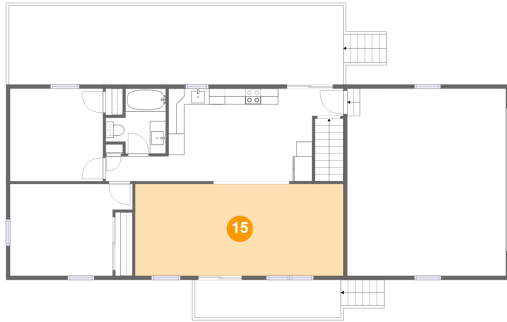
Heated: Yes  
Finished: Yes  
Enclosed: Yes  
Contiguous: Yes  
Permitted: Yes  
Wet space: No  
Addition: No  
Conversion: No



## Home report

192 Twin Cove Drive, Westlake Corner, Moneta, Franklin County,  
Virginia, United States, 24121

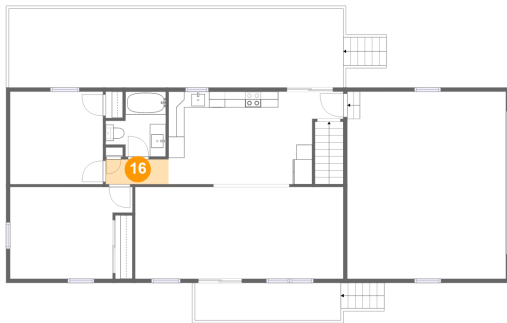
### 15 Floor 2 - Living Room



Max Dimensions: 26'0" x 11'6"  
Calculated Area: 299 sq. ft  
Included: Yes

Heated: Yes  
Finished: Yes  
Enclosed: Yes  
Contiguous: Yes  
Permitted: Yes  
Wet space: No  
Addition: No  
Conversion: No

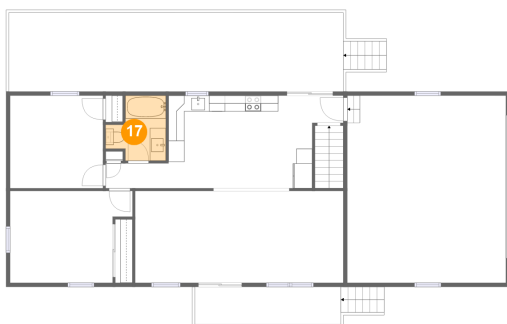
### 16 Floor 2 - Hall



Max Dimensions: 7'10" x 3'1"  
Calculated Area: 24 sq. ft  
Included: Yes

Heated: Yes  
Finished: Yes  
Enclosed: Yes  
Contiguous: Yes  
Permitted: Yes  
Wet space: No  
Addition: No  
Conversion: No

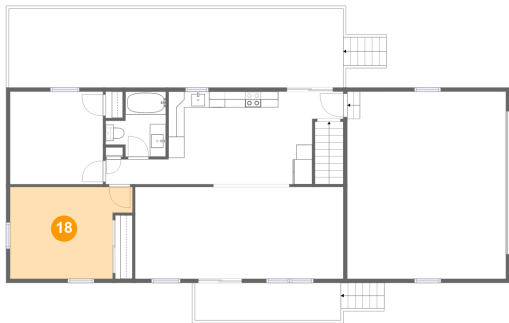
### 17 Floor 2 - Bath



Max Dimensions: 7'6" x 8'2"  
Calculated Area: 48 sq. ft  
Included: Yes

Heated: Yes  
Finished: Yes  
Enclosed: Yes  
Contiguous: Yes  
Permitted: Yes  
Wet space: Yes  
Addition: No  
Conversion: No

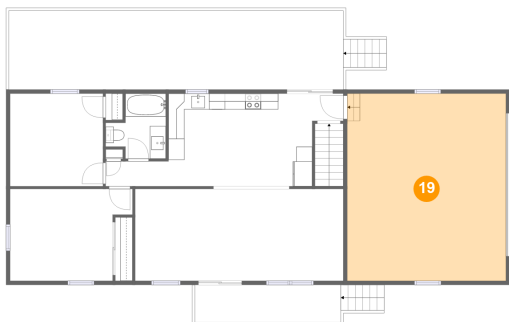
18 Floor 2 - Primary Bedroom



Max Dimensions: 15'4" x 11'6"  
Calculated Area: 155 sq. ft  
Included: Yes

Heated: Yes  
Finished: Yes  
Enclosed: Yes  
Contiguous: Yes  
Permitted: Yes  
Wet space: No  
Addition: No  
Conversion: No

19 Floor 2 - Garage



Max Dimensions: 19'10" x 23'5"  
Calculated Area: 464 sq. ft  
Included: No

Heated: No  
Finished: No  
Enclosed: Yes  
Contiguous: Yes  
Permitted: Yes  
Wet space: No  
Addition: No  
Conversion: No