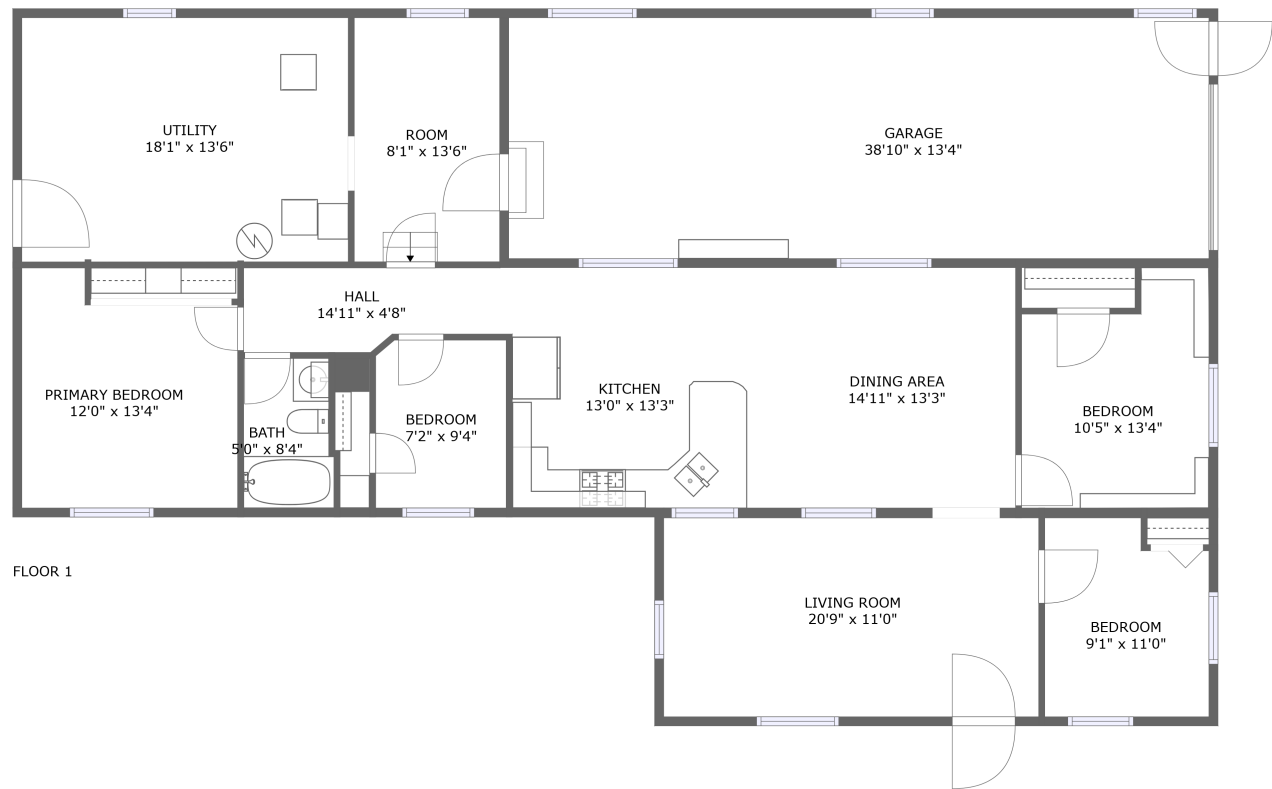


Home report

8939 Old Route 31, Galen, Lyons, Wayne County, New York,  
United States, 14489




Total Area: 1236 sq. ft

Floor 1: 1236 sq. ft

Excluded: Room 114 sq. ft, Utility 245 sq. ft, Garage 519 sq. ft, Walls: 130 sq. ft

Property summary

 1 Floors

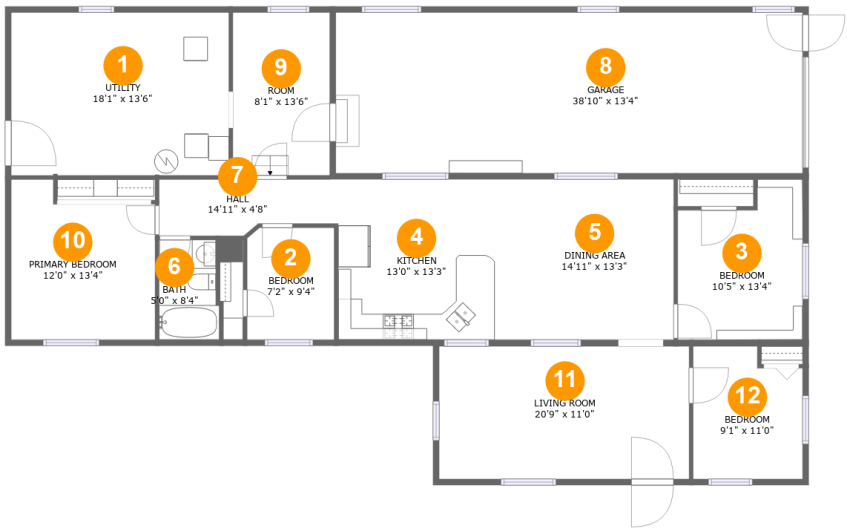
 4 Bedrooms

 1 Bathrooms

 1 Garages

Home report

8939 Old Route 31, Galen, Lyons, Wayne County, New York,  
United States, 14489



Room dimensions

Floor 1 Total:1236sqft    Excluded: 878sqft

#		Max Dimensions	sqft	Included
1	Utility	18'1" x 13'6"	245 sq. ft	No
2	Bedroom	7'2" x 9'4"	67 sq. ft	Yes
3	Bedroom	10'5" x 13'4"	121 sq. ft	Yes
4	Kitchen	13'0" x 13'3"	172 sq. ft	Yes
5	Dining Area	14'11" x 13'3"	198 sq. ft	Yes
6	Bath	5'0" x 8'4"	40 sq. ft	Yes
7	Hall	14'11" x 4'8"	63 sq. ft	Yes
8	Garage	38'10" x 13'4"	519 sq. ft	No
9	Room	8'1" x 13'6"	109 sq. ft	No
10	Primary Bedroom	12'0" x 13'4"	142 sq. ft	Yes
11	Living Room	20'9" x 11'0"	232 sq. ft	Yes

Home report

8939 Old Route 31, Galen, Lyons, Wayne County, New York,  
United States, 14489

#		Max Dimensions	sqft	Included
12	Bedroom	9'1" x 11'0"	94 sq. ft	Yes

8939 Old Route 31, Galen, Lyons, Wayne County, New York,  
United States, 14489

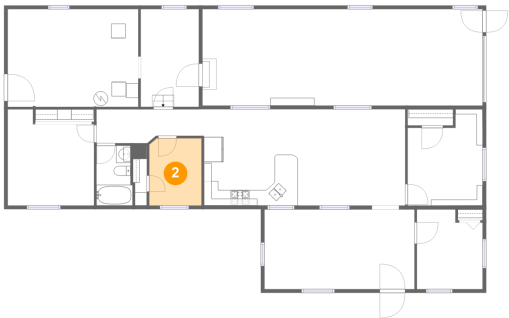
1 Floor 1 - Utility



Max Dimensions: 18'1" x 13'6"  
Calculated Area: 245 sq. ft  
Included: No

Heated: Yes  
Finished: No  
Enclosed: Yes  
Contiguous: Yes  
Permitted: Yes  
Wet space: No  
Addition: No  
Conversion: No

2 Floor 1 - Bedroom



Max Dimensions: 7'2" x 9'4"  
Calculated Area: 67 sq. ft  
Included: Yes

Heated: Yes  
Finished: Yes  
Enclosed: Yes  
Contiguous: Yes  
Permitted: Yes  
Wet space: No  
Addition: No  
Conversion: No

## Home report

8939 Old Route 31, Galen, Lyons, Wayne County, New York,  
United States, 14489

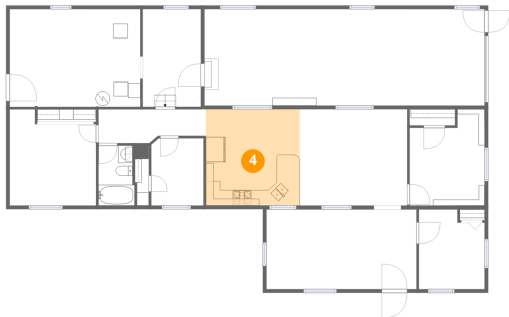
### 3 Floor 1 - Bedroom



Max Dimensions: 10'5" x 13'4"  
Calculated Area: 121 sq. ft  
Included: Yes

Heated: Yes  
Finished: Yes  
Enclosed: Yes  
Contiguous: Yes  
Permitted: Yes  
Wet space: No  
Addition: No  
Conversion: No

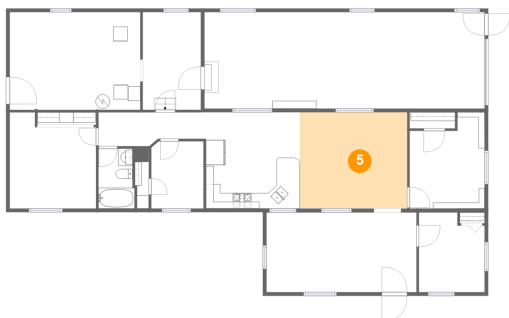
### 4 Floor 1 - Kitchen



Max Dimensions: 13'0" x 13'3"  
Calculated Area: 172 sq. ft  
Included: Yes

Heated: Yes  
Finished: Yes  
Enclosed: Yes  
Contiguous: Yes  
Permitted: Yes  
Wet space: No  
Addition: No  
Conversion: No

### 5 Floor 1 - Dining Area



Max Dimensions: 14'11" x 13'3"  
Calculated Area: 198 sq. ft  
Included: Yes

Heated: Yes  
Finished: Yes  
Enclosed: Yes  
Contiguous: Yes  
Permitted: Yes  
Wet space: No  
Addition: No  
Conversion: No

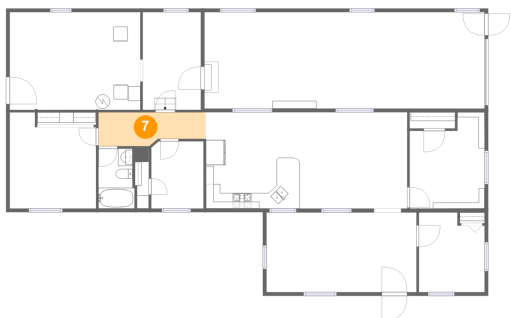
6 Floor 1 - Bath



Max Dimensions: 5'0" x 8'4"  
Calculated Area: 40 sq. ft  
Included: Yes

Heated: Yes  
Finished: Yes  
Enclosed: Yes  
Contiguous: Yes  
Permitted: Yes  
Wet space: Yes  
Addition: No  
Conversion: No

7 Floor 1 - Hall



Max Dimensions: 14'11" x 4'8"  
Calculated Area: 63 sq. ft  
Included: Yes

Heated: Yes  
Finished: Yes  
Enclosed: Yes  
Contiguous: Yes  
Permitted: Yes  
Wet space: No  
Addition: No  
Conversion: No

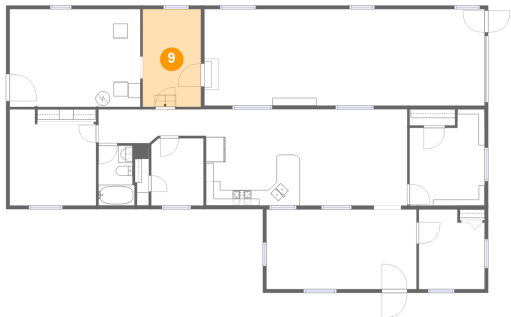
8 Floor 1 - Garage



Max Dimensions: 38'10" x 13'4"  
Calculated Area: 519 sq. ft  
Included: No

Heated: No  
Finished: No  
Enclosed: Yes  
Contiguous: Yes  
Permitted: Yes  
Wet space: No  
Addition: No  
Conversion: No

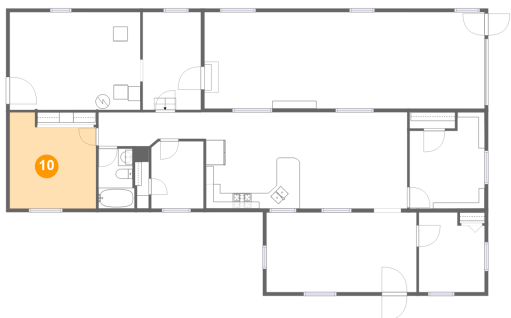
9 Floor 1 - Room



Max Dimensions: 8'1" x 13'6"  
Calculated Area: 109 sq. ft  
Included: No

Heated: Yes  
Finished: No  
Enclosed: Yes  
Contiguous: Yes  
Permitted: Yes  
Wet space: No  
Addition: No  
Conversion: No

10 Floor 1 - Primary Bedroom



Max Dimensions: 12'0" x 13'4"  
Calculated Area: 142 sq. ft  
Included: Yes

Heated: Yes  
Finished: Yes  
Enclosed: Yes  
Contiguous: Yes  
Permitted: Yes  
Wet space: No  
Addition: No  
Conversion: No

11 Floor 1 - Living Room



Max Dimensions: 20'9" x 11'0"  
Calculated Area: 232 sq. ft  
Included: Yes

Heated: Yes  
Finished: Yes  
Enclosed: Yes  
Contiguous: Yes  
Permitted: Yes  
Wet space: No  
Addition: No  
Conversion: No

8939 Old Route 31, Galen, Lyons, Wayne County, New York,  
United States, 14489

**12** Floor 1 - Bedroom



Max Dimensions: 9'1" x 11'0"  
Calculated Area: 94 sq. ft  
Included: Yes

Heated: Yes  
Finished: Yes  
Enclosed: Yes  
Contiguous: Yes  
Permitted: Yes  
Wet space: No  
Addition: No  
Conversion: No