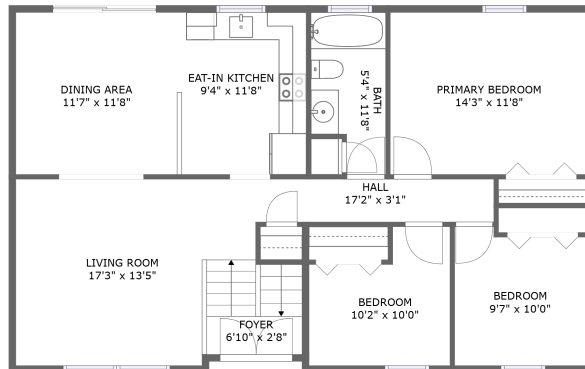
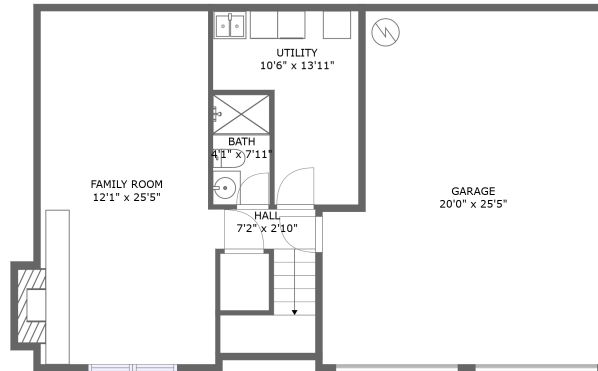


29 Farmcrest Drive, Cecil, Pennsylvania 15321, United States



FLOOR 2



FLOOR 1

Property summary

 **1** Garages

 **3** Bedrooms

 **2** Bathrooms

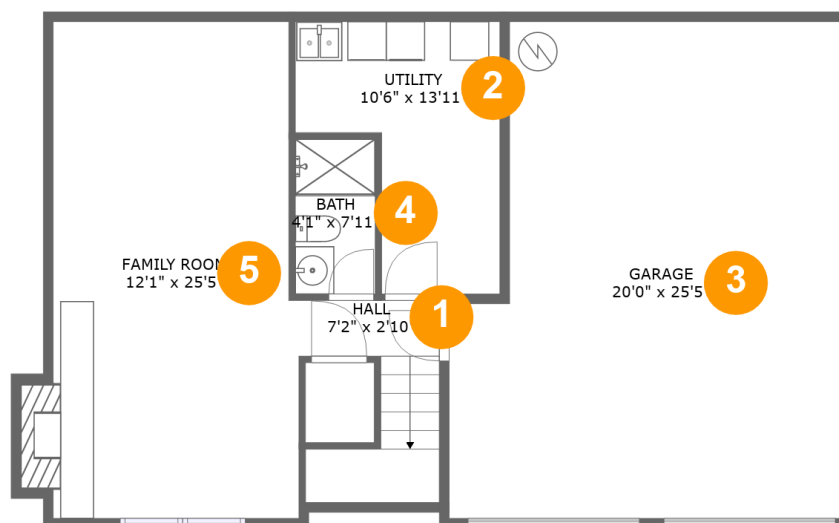
 **0** Half baths

 **2** Floors

 **1,578**
Gross living area sqft

 **2,211**
Total sqft

29 Farmcrest Drive, Cecil, Pennsylvania 15321, United States



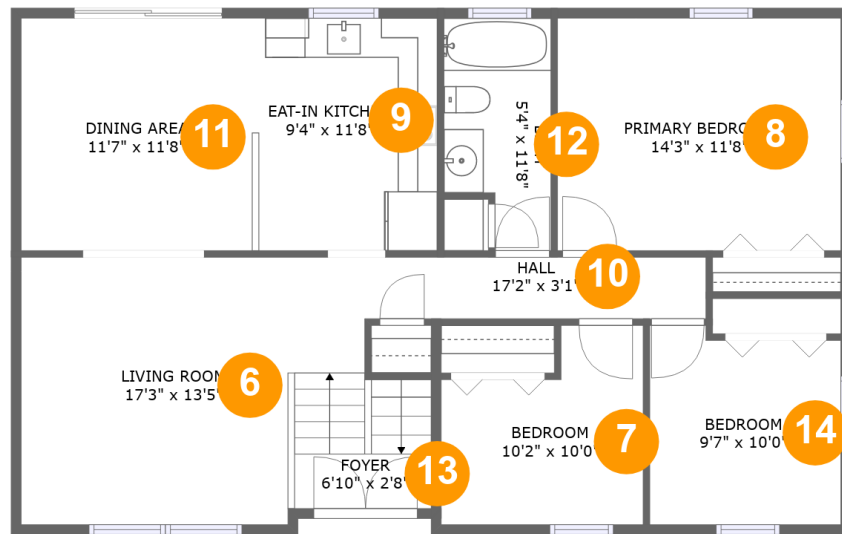
Room dimensions

Floor 1

Total sqft: 1100 Living area: 467

#		Dimensions	sqft	Counted as living area
1	Hall	7'2" x 2'10"	54 sq. ft	Yes
2	Utility	10'6" x 13'11"	110 sq. ft	No
3	Garage	20'0" x 25'5"	466 sq. ft	No
4	Bath	4'1" x 7'11"	32 sq. ft	Yes
5	Living Room	12'1" x 25'5"	322 sq. ft	Yes

29 Farmcrest Drive, Cecil, Pennsylvania 15321, United States



Room dimensions

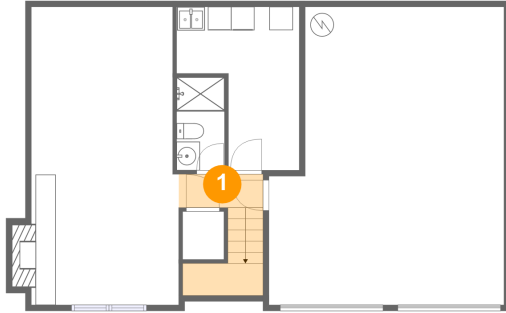
Floor 2

Total sqft: 1111 Living area: 1111

#		Dimensions	sqft	Counted as living area
6	Living Room	17'3" x 13'5"	203 sq. ft	Yes
7	Bedroom	10'2" x 10'0"	85 sq. ft	Yes
8	Bedroom	14'3" x 11'8"	166 sq. ft	Yes
9	Kitchen	9'4" x 11'8"	109 sq. ft	Yes
10	Hall	17'2" x 3'1"	53 sq. ft	Yes
11	Dining Room	11'7" x 11'8"	136 sq. ft	Yes
12	Bath	5'4" x 11'8"	55 sq. ft	Yes
13	Entry	6'10" x 2'8"	48 sq. ft	Yes
14	Bedroom	9'7" x 10'0"	91 sq. ft	Yes

29 Farmcrest Drive, Cecil, Pennsylvania 15321, United States

1 Floor 1 - Hall



Dimensions: 7'2" x 2'10"
Area: 54 sq. ft
Counted as living area: Yes

Heated: Yes
Finished: Yes
Enclosed: Yes
Contiguous: Yes
Permitted: Yes
Wet space: No
Addition: No
Conversion: No

2 Floor 1 - Utility



Dimensions: 10'6" x 13'11"
Area: 110 sq. ft
Counted as living area: No

Heated: Yes
Finished: No
Enclosed: Yes
Contiguous: Yes
Permitted: Yes
Wet space: No
Addition: No
Conversion: No

29 Farmcrest Drive, Cecil, Pennsylvania 15321, United States

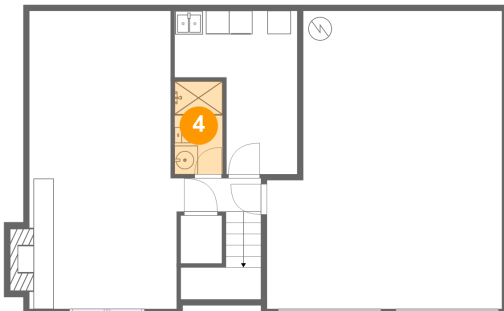
3 Floor 1 - Garage



Dimensions: 20'0" x 25'5"
Area: 466 sq. ft
Counted as living area: No

Heated: No
Finished: No
Enclosed: Yes
Contiguous: Yes
Permitted: Yes
Wet space: No
Addition: No
Conversion: No

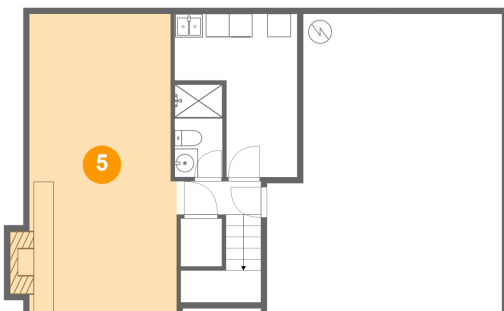
4 Floor 1 - Bath



Dimensions: 4'1" x 7'11"
Area: 32 sq. ft
Counted as living area: Yes

Heated: Yes
Finished: Yes
Enclosed: Yes
Contiguous: Yes
Permitted: Yes
Wet space: Yes
Addition: No
Conversion: No

5 Floor 1 - Living Room



Dimensions: 12'1" x 25'5"
Area: 322 sq. ft
Counted as living area: Yes

Heated: Yes
Finished: Yes
Enclosed: Yes
Contiguous: Yes
Permitted: Yes
Wet space: No
Addition: No
Conversion: No

29 Farmcrest Drive, Cecil, Pennsylvania 15321, United States

6 Floor 2 - Living Room



Dimensions: 17'3" x 13'5"
Area: 203 sq. ft
Counted as living area: Yes

Heated: Yes
Finished: Yes
Enclosed: Yes
Contiguous: Yes
Permitted: Yes
Wet space: No
Addition: No
Conversion: No

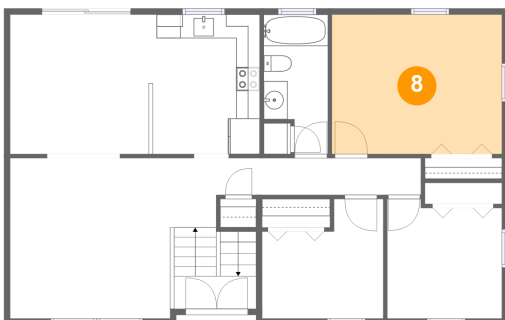
7 Floor 2 - Bedroom



Dimensions: 10'2" x 10'0"
Area: 85 sq. ft
Counted as living area: Yes

Heated: Yes
Finished: Yes
Enclosed: Yes
Contiguous: Yes
Permitted: Yes
Wet space: No
Addition: No
Conversion: No

8 Floor 2 - Bedroom



Dimensions: 14'3" x 11'8"
Area: 166 sq. ft
Counted as living area: Yes

Heated: Yes
Finished: Yes
Enclosed: Yes
Contiguous: Yes
Permitted: Yes
Wet space: No
Addition: No
Conversion: No

29 Farmcrest Drive, Cecil, Pennsylvania 15321, United States

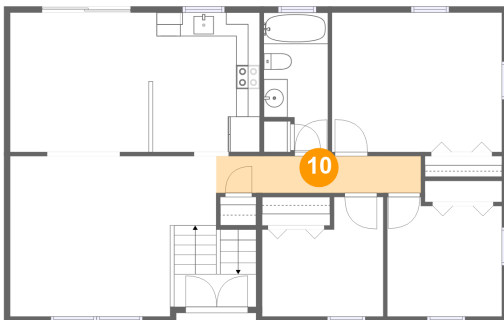
9 Floor 2 - Kitchen



Dimensions: 9'4" x 11'8"
Area: 109 sq. ft
Counted as living area: Yes

Heated: Yes
Finished: Yes
Enclosed: Yes
Contiguous: Yes
Permitted: Yes
Wet space: No
Addition: No
Conversion: No

10 Floor 2 - Hall



Dimensions: 17'2" x 3'1"
Area: 53 sq. ft
Counted as living area: Yes

Heated: Yes
Finished: Yes
Enclosed: Yes
Contiguous: Yes
Permitted: Yes
Wet space: No
Addition: No
Conversion: No

11 Floor 2 - Dining Room



Dimensions: 11'7" x 11'8"
Area: 136 sq. ft
Counted as living area: Yes

Heated: Yes
Finished: Yes
Enclosed: Yes
Contiguous: Yes
Permitted: Yes
Wet space: No
Addition: No
Conversion: No

29 Farmcrest Drive, Cecil, Pennsylvania 15321, United States

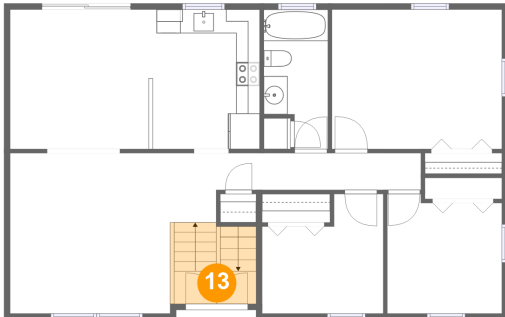
12 Floor 2 - Bath



Dimensions: 5'4" x 11'8"
Area: 55 sq. ft
Counted as living area: Yes

Heated: Yes
Finished: Yes
Enclosed: Yes
Contiguous: Yes
Permitted: Yes
Wet space: Yes
Addition: No
Conversion: No

13 Floor 2 - Entry



Dimensions: 6'10" x 2'8"
Area: 48 sq. ft
Counted as living area: Yes

Heated: Yes
Finished: Yes
Enclosed: Yes
Contiguous: Yes
Permitted: Yes
Wet space: No
Addition: No
Conversion: No

14 Floor 2 - Bedroom



Dimensions: 9'7" x 10'0"
Area: 91 sq. ft
Counted as living area: Yes

Heated: Yes
Finished: Yes
Enclosed: Yes
Contiguous: Yes
Permitted: Yes
Wet space: No
Addition: No
Conversion: No